



Excellent Owner/User Opportunity!

- ±2,160 SF Building
- ±2.88 Acre Lot
- Fenced Outdoor Storage
- Highway 40 Frontage
- Easy Access to I-70, I-435, and I-470
- Signage Available

For more information:

Christian Wead
816.412.8472
cwead@blockllc.com

Blaise Gunnerson
816.878.6314
bgunnerson@blockllc.com

The information contained in this marketing flyer is presented as general information only. Block Real Estate Services, LLC makes no representation as to its accuracy. This information is not intended as legal, financial or real estate advice and must not be relied upon as such. You should make your own inquiries, obtain independent inspections, and seek professional advice tailored to your specific circumstances before making any legal, financial or real estate decisions.

Building Specifications

Building Size:	±2,160 SF
Lot Size:	±2.88 SF
Year Built:	1994
Clear Height:	9'1"
Peak Height:	19'1"
Loading:	2 Drive-Ins (Storage Building) 1: 15' x 6'8" 1: 8'5" x 6'8"
HVAC:	Air-Conditioned Offices
Parking:	25 Spaces
Zoning:	B2-2
Real Estate Taxes (2025):	\$15,647.51
Parcel ID:	33-610-01-53-00-0-00-000, 33-610-01-52-00-0-00-000
Legal Description:	BRENTWOOD PLAZA LOT 4-5

For more information:

Christian Wead
816.412.8472
cwead@blockllc.com

Blaise Gunnerson
816.878.6314
bgunnerson@blockllc.com

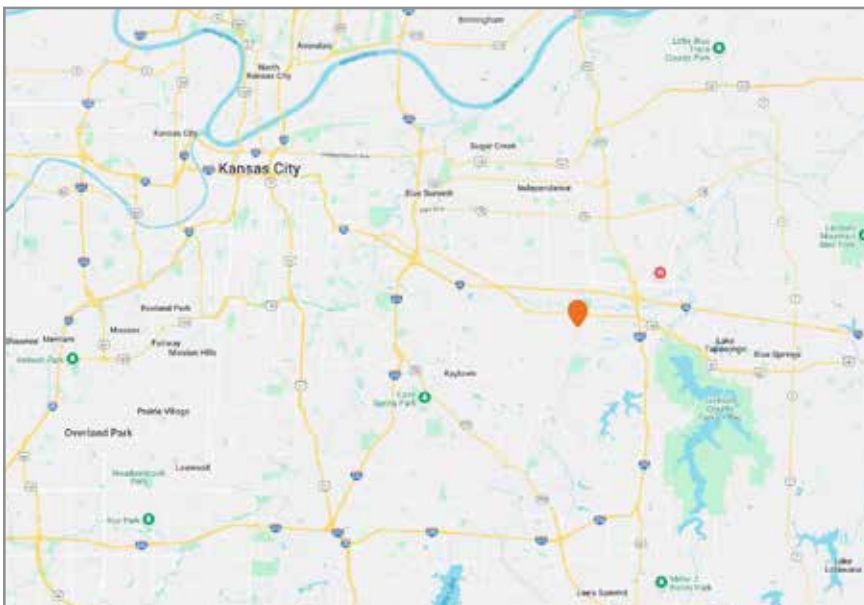
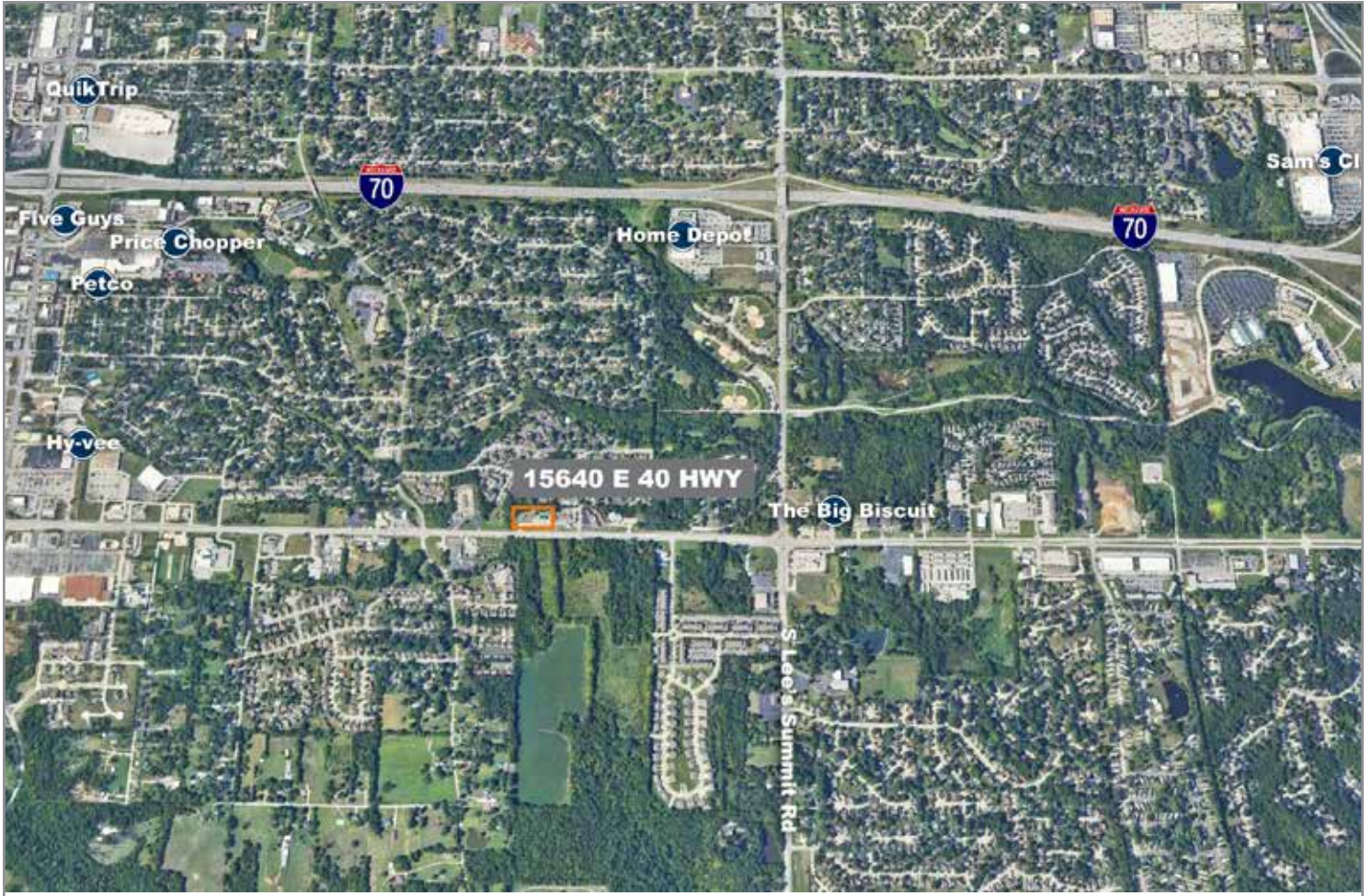
Property Photos



15640 E US 40 HWY

Kansas City, Missouri 64136

For Sale



For more information:

Christian Wead

816.412.8472

cwead@blockllc.com

Blaise Gunnerson

816.878.6314

bgunnerson@blockllc.com