

7301 BURNET

7301 Burnet Road
Austin, Texas, 78757



Location

SEQ of Burnet Rd and Pasadena Dr
in Northwest Austin

Property Highlights

- A 78,000 SF urban in-fill shopping center fronting Burnet Rd
- 1,500 SF - 28,000 SF AVAILABLE
- Great mix of national, regional, and local credit tenants
- Home to Back Door To The Trade - A high-end wholesale home furnishings and design center
- 420± Parking spaces
- Strong north central sector demographics

Demographics

	1 Miles	3 Miles	5 Miles
2023 Population	14,206	143,319	335,301
Daytime Pop.	16,763	194,073	489,858
Avg. HH Income	\$141,668	\$115,881	\$119,762

Traffic Counts:

Burnet Rd @ St Joseph Blvd: 33,410 VPD
(Kalibrate 2023)

For More Information:

Russ Howard | Principal
512.575.3577 | rhoward@caswellcommercial.com

7301 BURNET

7301 Burnet Road
Austin, Texas, 78757



SITE PLAN

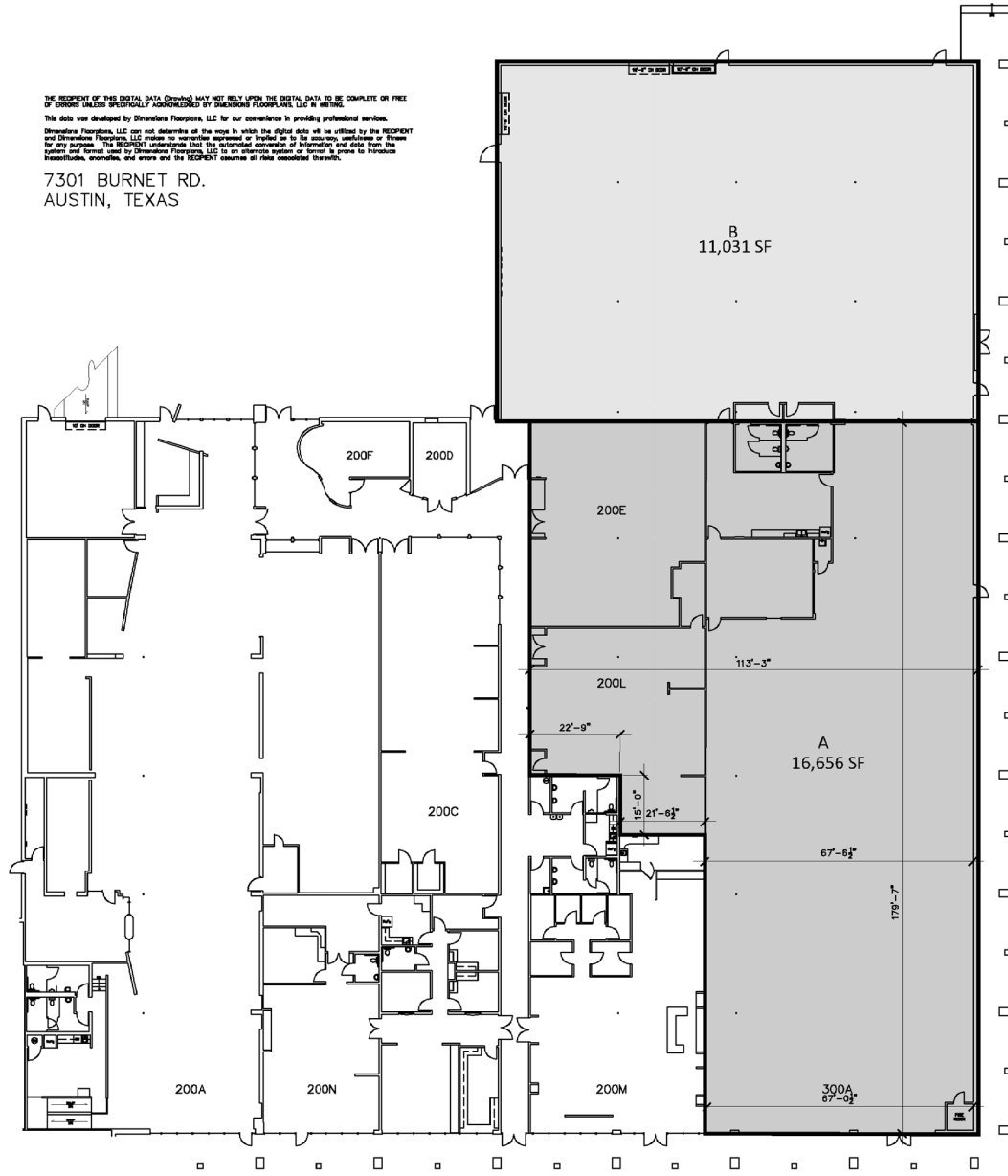


7301 BURNET

7301 Burnet Road
Austin, Texas, 78757



DEMISING PLAN



Legend

A = 16,656 SF
B = 11,031 SF

scale = $\frac{1}{32}$ " = 1'

7301 BURNET

7301 Burnet Road
Austin, Texas, 78757



INTERSECTION AERIAL



7301 BURNET

7301 Burnet Road
Austin, Texas, 78757



RETAIL AERIAL

