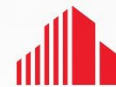


FOR LEASE

Arlington Square

3250-3300 Washtenaw Avenue

Ann Arbor, Michigan 48104



**CUSHMAN &
WAKEFIELD**



Multiple Office Suites Available For Lease

- 2nd floor offices
- Across the street from abundant retail including Arborland Center, Whole Foods, Barnes & Noble, Qdoba and many more
- 65 parking spaces; underground parking available
- High visibility/traffic at the corner of Washtenaw Avenue and Huron Parkway
- Immediate proximity to US-23

Lease Rate: \$17.50/SF + Utilities

Contact

Kyle Passage
Senior Associate
+1 248 358 6113
kyle.passage@cushwake.com

Tony Awendt
Executive Director
+1 248 358 6115
tony.awendt@cushwake.com



27777 Franklin Road, Suite 1050
Southfield, Michigan 48034
Main +1 248 358 6100
cushmanwakefield.com

FOR LEASE

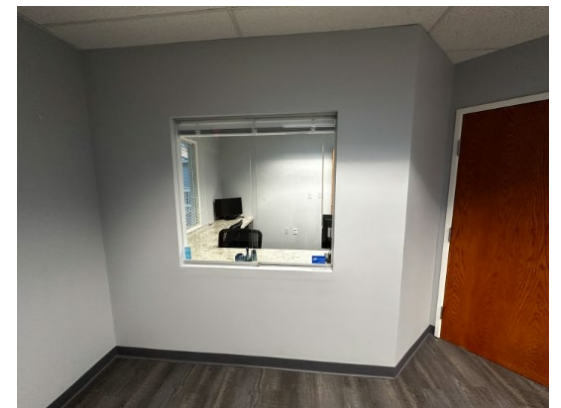
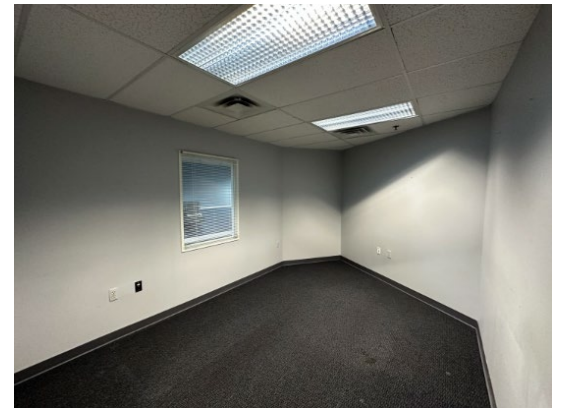
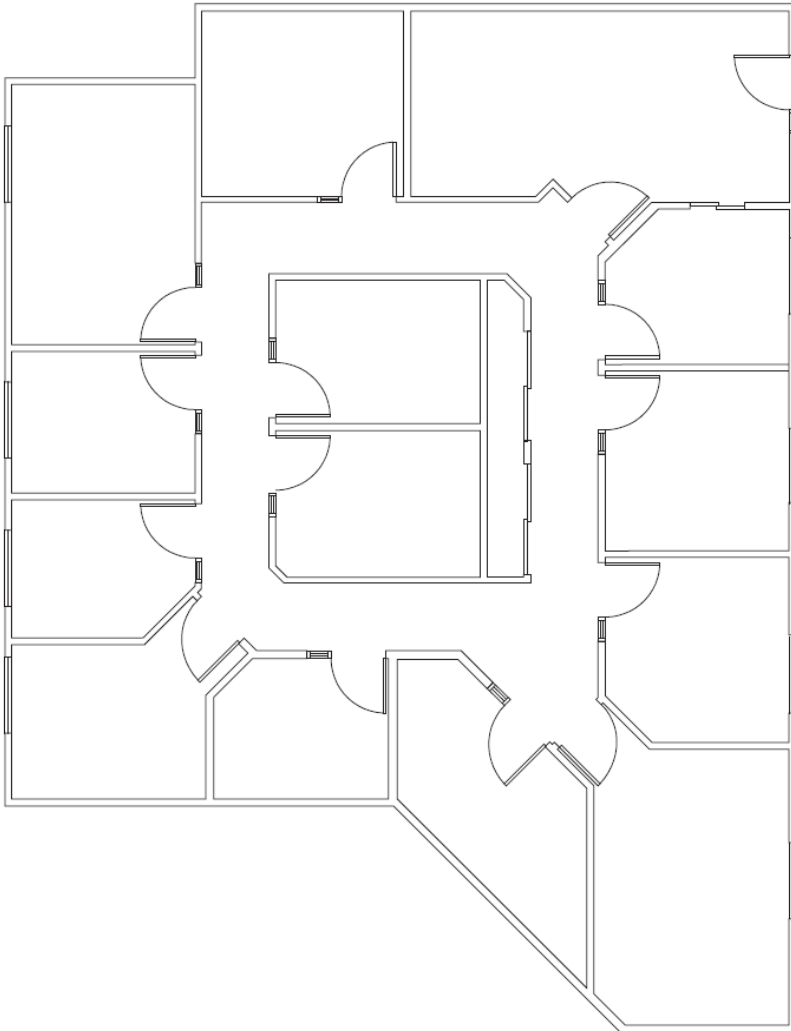
Arlington Square

3250-3300 Washtenaw Avenue

Ann Arbor, Michigan 48104



Suite 265
2,228 RSF
\$17.50/SF + Utilities



Contact

Kyle Passage
Senior Associate
+1 248 358 6113
kyle.passage@cushwake.com

Tony Avendt
Executive Director
+1 248 358 6115
tony.avendt@cushwake.com

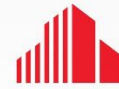
27777 Franklin Road, Suite 1050
Southfield, Michigan 48034
Main +1 248 358 6100
cushmanwakefield.com

FOR LEASE

Arlington Square

3250-3300 Washtenaw Avenue

Ann Arbor, Michigan 48104

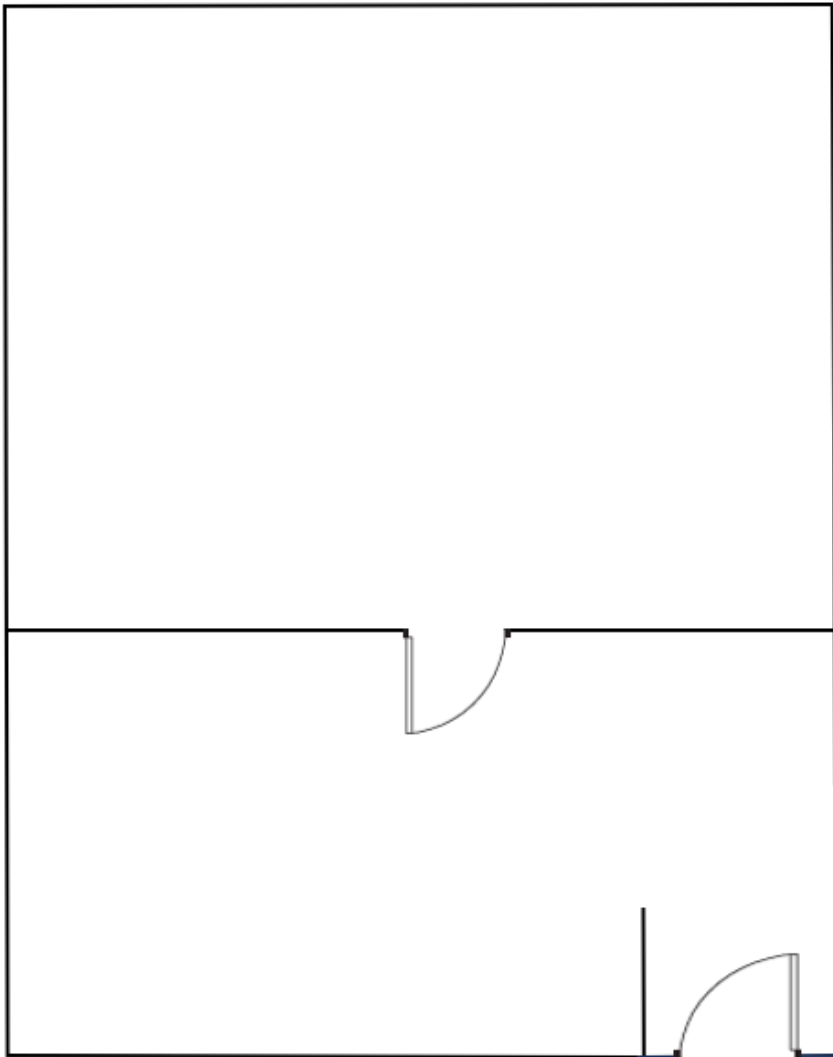


**CUSHMAN &
WAKEFIELD**

Suite 275

338 RSF

\$17.50/SF + Utilities



Contact

Kyle Passage

Senior Associate

+1 248 358 6113

kyle.passage@cushwake.com

Tony Avendt

Executive Director

+1 248 358 6115

tony.avendt@cushwake.com

27777 Franklin Road, Suite 1050

Southfield, Michigan 48034

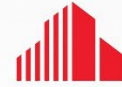
Main +1 248 358 6100

cushmanwakefield.com

FOR LEASE

Arlington Square

3250-3300 Washtenaw Avenue
Ann Arbor, Michigan 48104

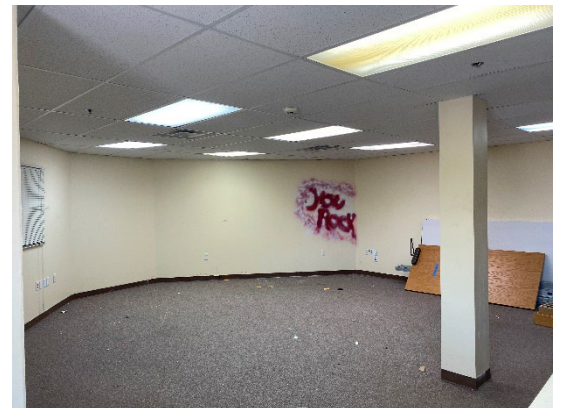
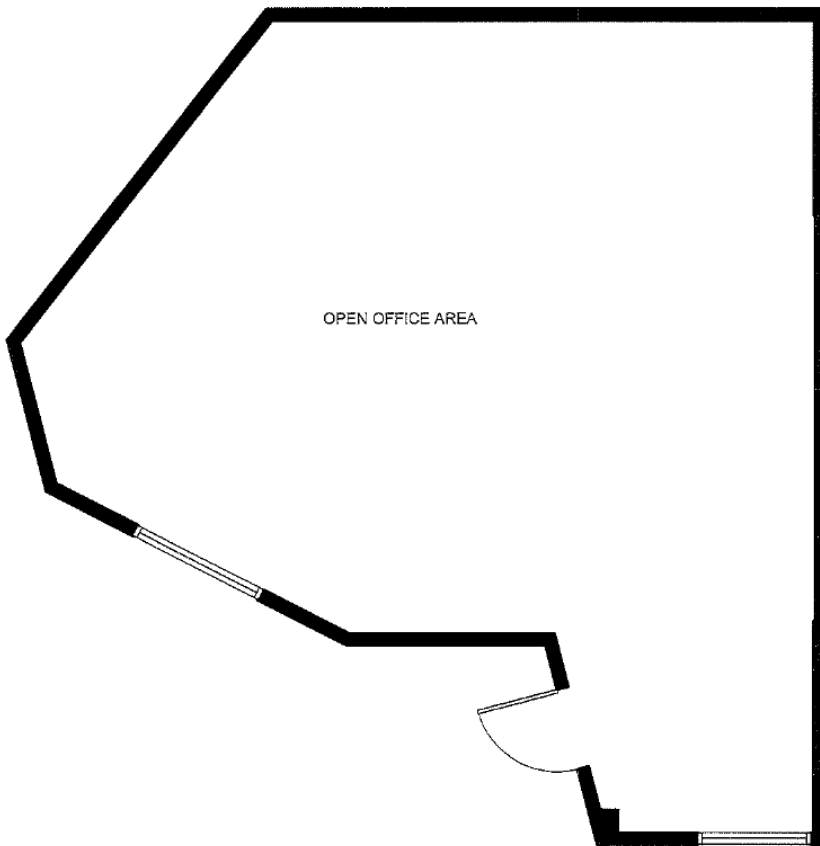


**CUSHMAN &
WAKEFIELD**

Suite 295

790 RSF

\$17.50/SF + Utilities



Contact

Kyle Passage
Senior Associate
+1 248 358 6113
kyle.passage@cushwake.com

Tony Avendt
Executive Director
+1 248 358 6115
tony.avendt@cushwake.com

27777 Franklin Road, Suite 1050
Southfield, Michigan 48034
Main +1 248 358 6100
cushmanwakefield.com

FOR LEASE

Arlington Square

3250-3300 Washtenaw Avenue
Ann Arbor, Michigan 48104



Property lines are approximate

Contact

Kyle Passage
Senior Associate
+1 248 358 6113
kyle.passage@cushwake.com

Tony Avendt
Executive Director
+1 248 358 6115
tony.avendt@cushwake.com

27777 Franklin Road, Suite 1050
Southfield, Michigan 48034
Main +1 248 358 6100
cushmanwakefield.com