



Colliers

Subject Property

Hwy 58

For Sale | Land
Undeveloped
Agricultural Land

26238 Hwy 58 | Bakersfield, CA 93314



Contact Us:

Oscar Baltazar

Senior Vice President | Principal | Central Cal
Industrial Properties Team
License No. 01263421
+1 661 631 3819
oscar.baltazar@colliers.com

Ryan Skidmore

Associate | Central Cal
Industrial Properties Team
License No. 02205007
+1 661 631 3811
ryan.skidmore@colliers.com

Colliers International

License No. 00452468
10000 Stockdale Hwy, Suite 102
Bakersfield, CA 93311
colliers.com/bakersfield

Property Information

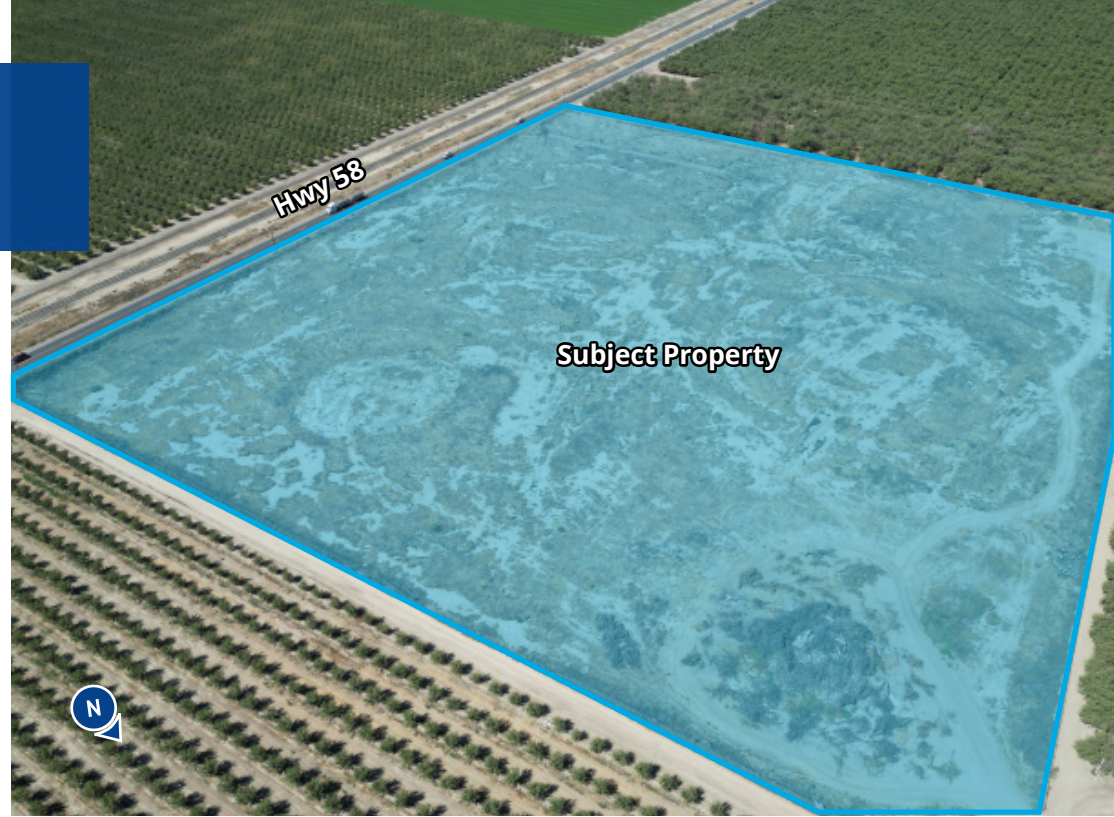
The subject property consists of approx. +/-22.02 Acres of undeveloped land situated along Hwy 58. The property is approximately +/- 5.7 miles from the I-5 on/off ramps.

Sales Price:

\$495,000.00

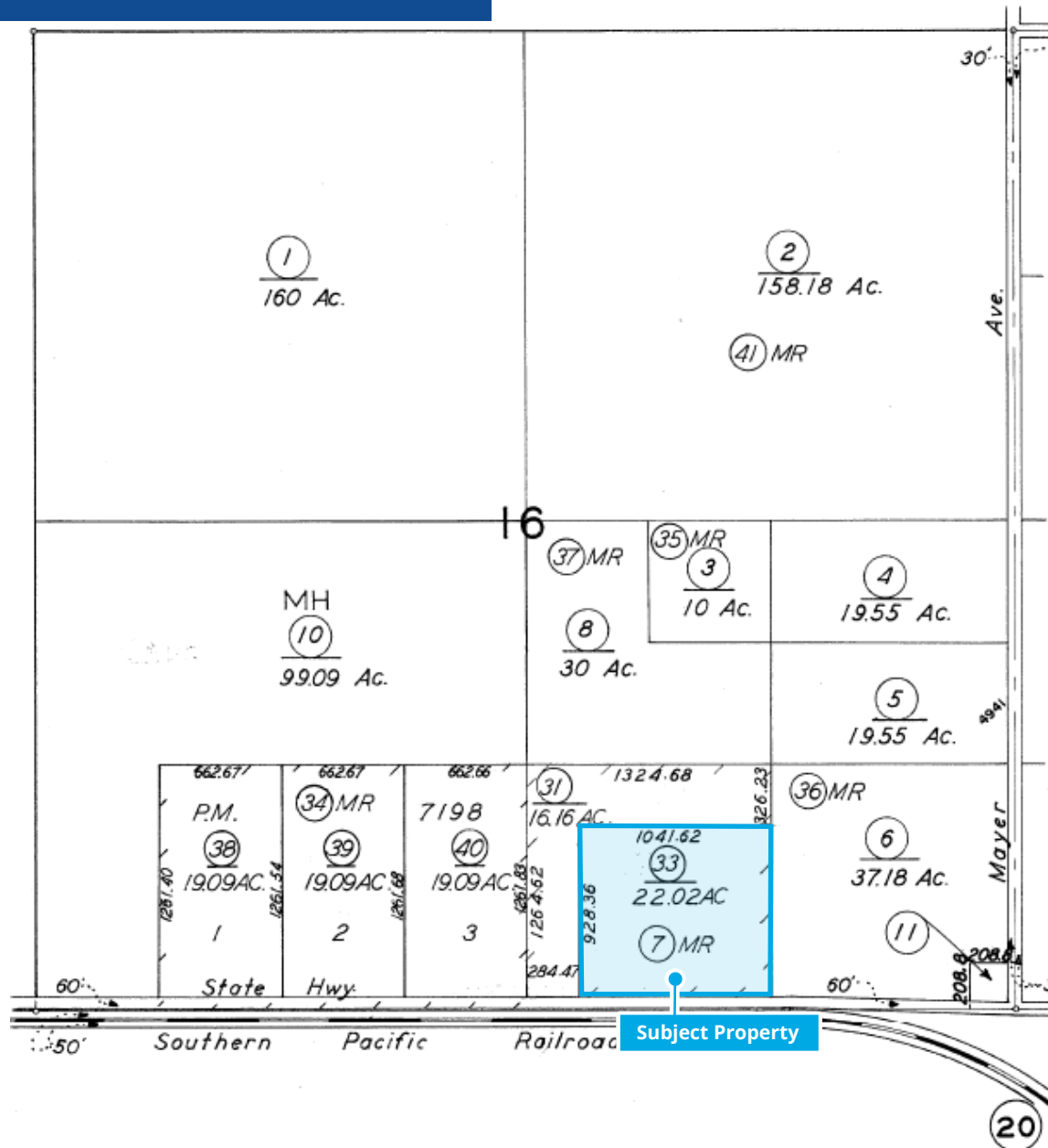
Highlights:

- Excellent location on Highway 58
- One (1) parcel totaling +/- 22.02 acres.
- Zoned A (Exclusive Agriculture in the County of Kern)
- One (1) existing approach to property
- Fully fenced
- APN 104-090-33



This document/email has been prepared by Colliers for advertising and general information only. Colliers makes no guarantees, representations or warranties of any kind, expressed or implied, regarding the information including, but not limited to, warranties of content, accuracy and reliability. Any interested party should undertake their own inquiries as to the accuracy of the information. Colliers excludes unequivocally all inferred or implied terms, conditions and warranties arising out of this document and excludes all liability for loss and damages arising there from. This publication is the copyrighted property of Colliers and /or its licensor(s). © 2024. All rights reserved. This communication is not intended to cause or induce breach of an existing listing agreement.

Parcel Map





Distance to Subject Property
I-5 - +/- 5.7 Mi to on/off ramps
Hwy 58 - +/- 3.85 Mi to on/off ramps
Downtown Bakersfield - +/- 16.33 Mi

Location Map

Demographics



Population

1 Mile: 453
3 Mile: 1,962
5 Mile: 2,808



Businesses

1 Mile: 5
3 Mile: 45
5 Mile: 170



Average HH Income

1 Mile: \$114,652
3 Mile: \$108,826
5 Mile: \$119,119,33



Median Age

1 Mile: 36.4
3 Mile: 36.9
5 Mile: 34.9

County Overview

KERN COUNTY ATA GLANCE

LARGEST ECONOMY
IN THE SAN JOAQUIN VALLEY

#1 IN AGRICULTURAL PRODUCTION NATIONWIDE 

#3 IN ECONOMIC DIVERSITY NATIONWIDE 

#4 IN STEM JOBS NATIONWIDE 

OVER 50 MAJOR DISTRIBUTION CENTERS 

THE ENERGY CAPITAL OF CALIFORNIA
Largest Provider of Oil & Renewable Energy in the State

70%  | **60%** 

#1  LARGEST WIND FARM IN THE U.S. **2ND**  LARGEST SOLAR FARM IN THE U.S. **#7**  OIL-PRODUCING COUNTY IN THE NATION

OVER 50 WORLD TECH "FIRSTS"
NAVAL AIR WEAPONS STATION CHINA LAKE 

1ST COMMERCIAL SPACE PORT IN U.S.
MOJAVE AIR & SPACE PORT AT RUTAN FIELD 

1ST SPACE SHUTTLE LANDING
EDWARDS AIR FORCE BASE 

Contact Us: **Oscar Baltazar**
Senior Vice President | Principal | Central Cal
Industrial Properties Team
License No. 01263421
+1 661 631 3819
oscar.baltazar@colliers.com

Ryan Skidmore
Associate | Central Cal
Industrial Properties Team
License No. 02205007
+1 661 631 3811
ryan.skidmore@colliers.com

Colliers International
License No. 00452468
10000 Stockdale Hwy, Suite 102
Bakersfield, CA 93311
colliers.com/bakersfield