



778-788 Gorham St

788 Gorham St, Lowell, MA 01852



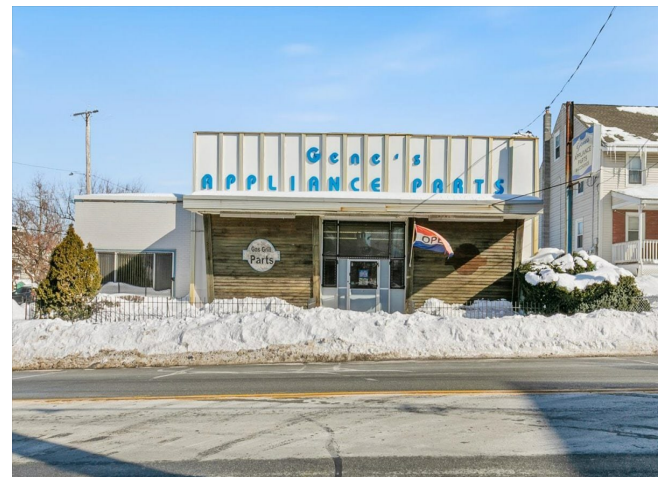
Stephan Coufos

CityLight Homes
246 Andover St, Peabody, MA 01960
stephancoufos@gmail.com
(978) 758-3688

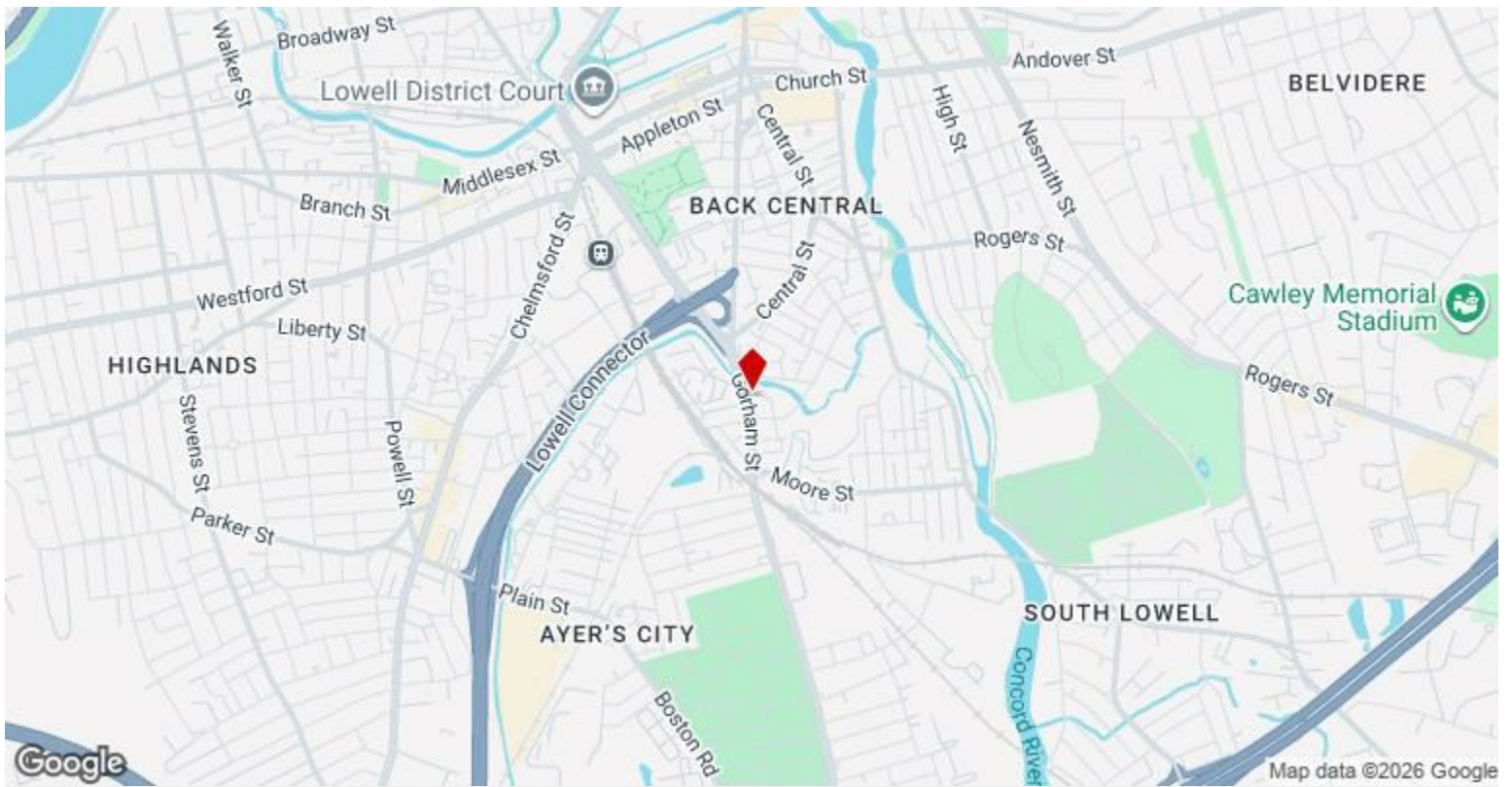
778-788 Gorham St

\$990,000

Prime Commercial Opportunity in a fantastic location. Now available for sale is an exceptional commercial property featuring a 4,100± square foot single-story, street-level building with an additional 2,000± square feet of basement space. Situated on a prominent corner lot along a highly traveled roadway near downtown, this property offers outstanding visibility and accessibility. The site includes off-street parking for apx.13 cars and provides convenient access to I-495 and the Lowell Connector, making it an ideal location for businesses serving both local and regional markets. The flexible floor plan and substantial footprint make the property well-suited for retail, office, manufacturing or warehouse use, while also presenting strong potential for redevelopment. This is an ideal spot for owner-users or investors seeking a high-exposure corner location with long-term upside in a well-connected area. Don't miss this rare opportunity— schedule a showing or to learn more....



Price:	\$990,000
Property Type:	Industrial
Building Class:	C
Sale Type:	Investment or Owner User
Lot Size:	0.16 AC
Gross Building Area:	4,419 SF
Rentable Building Area:	4,419 SF
No. Stories:	1
Year Built:	1955
Tenancy:	Single
Parking Ratio:	1.7/1,000 SF
Zoning Description:	TMU
APN / Parcel ID:	LOWE-000183-002675-000788

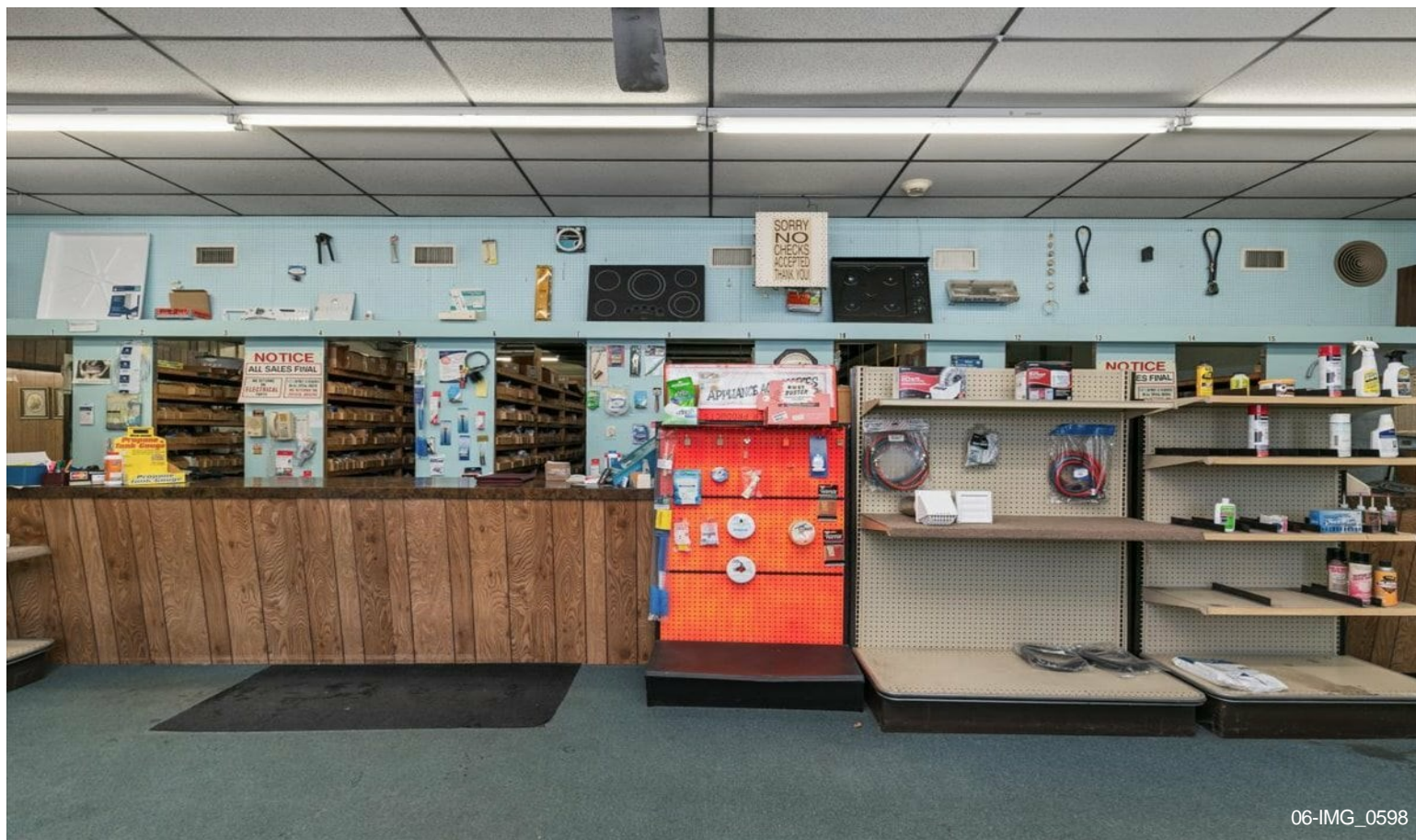


788 Gorham St, Lowell, MA 01852

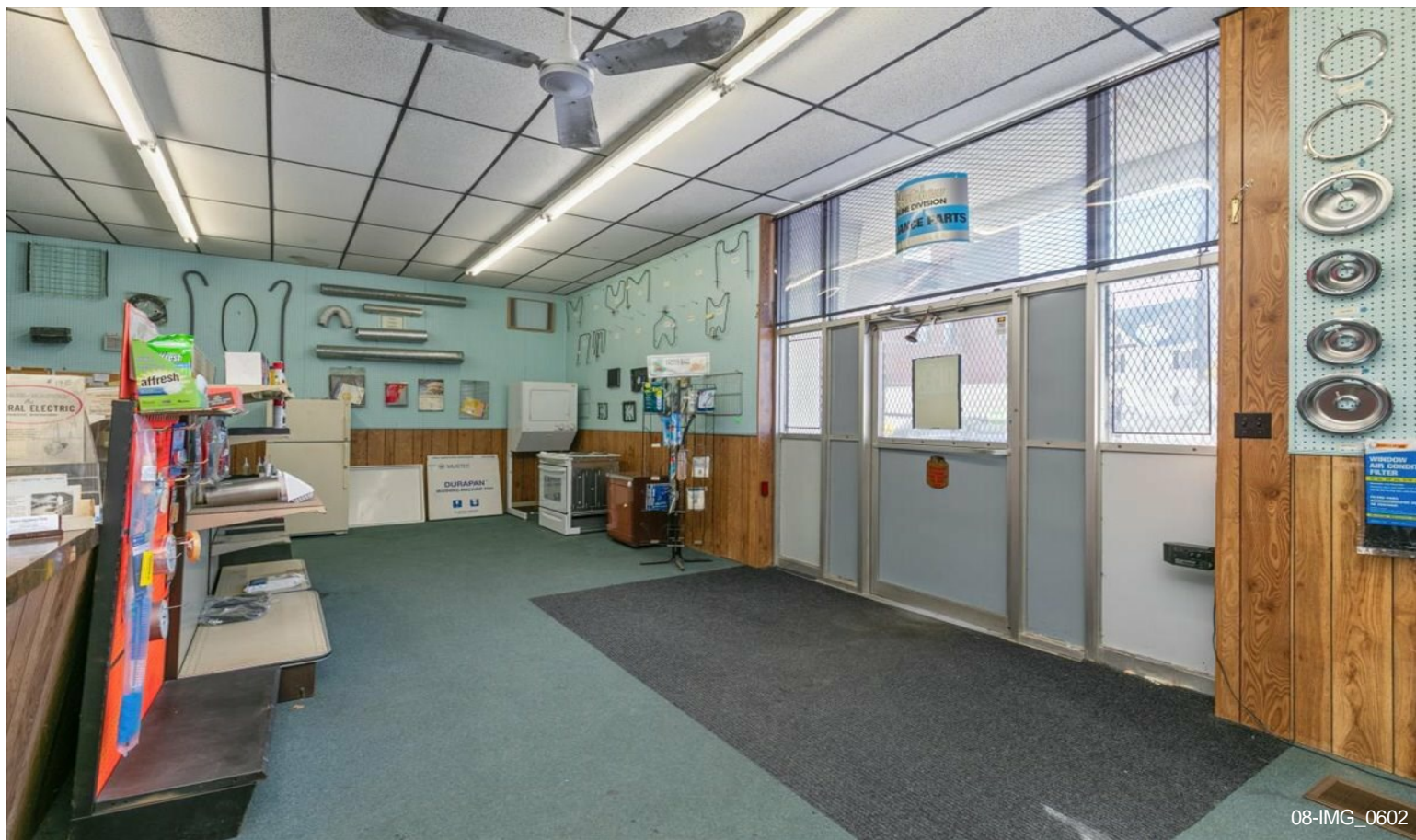
Property Photos



Property Photos



Property Photos



08-IMG_0602



09-IMG_0584-Edit

Property Photos



Property Photos



12-IMG_0544

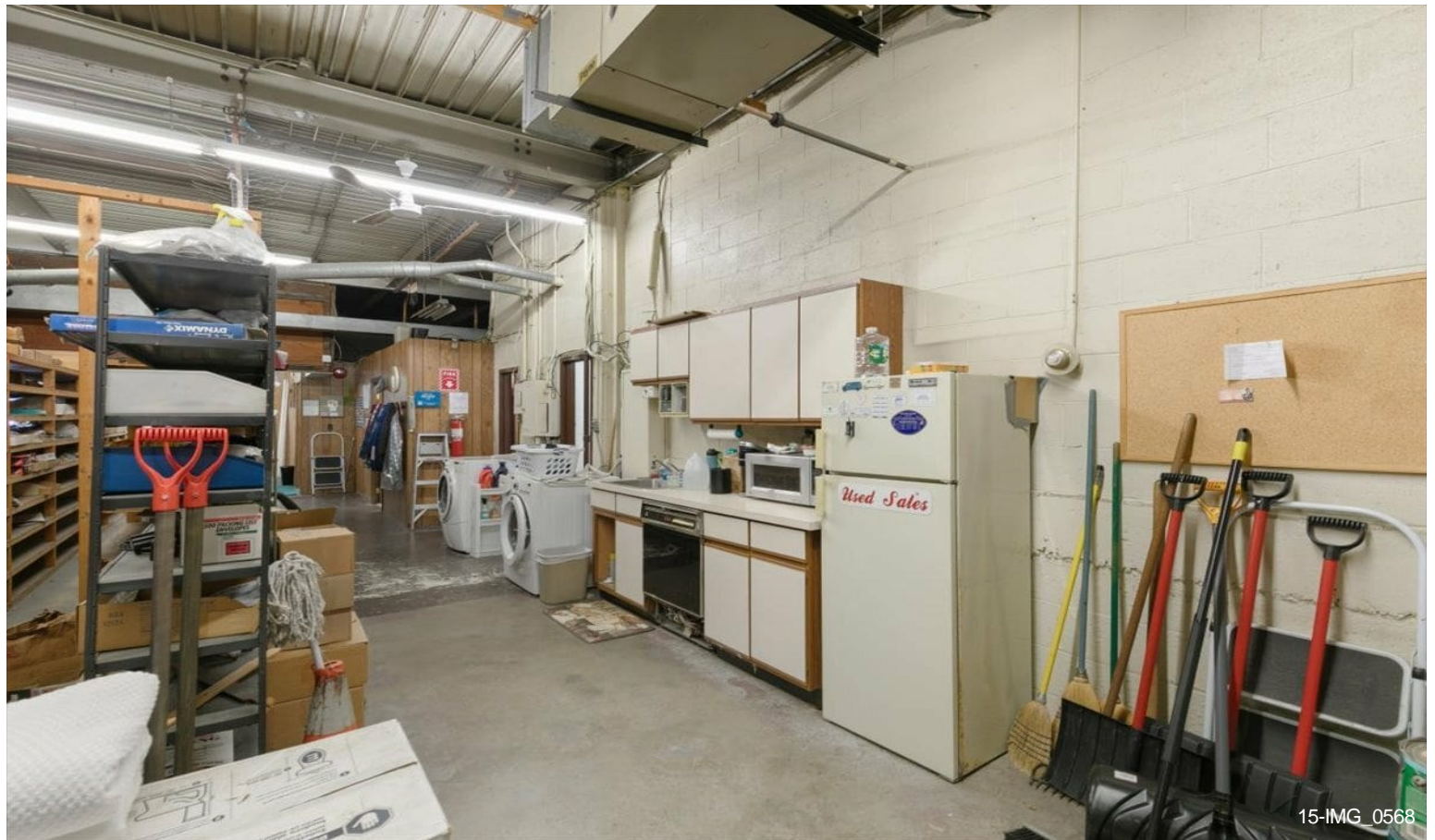


13-IMG_0548

Property Photos

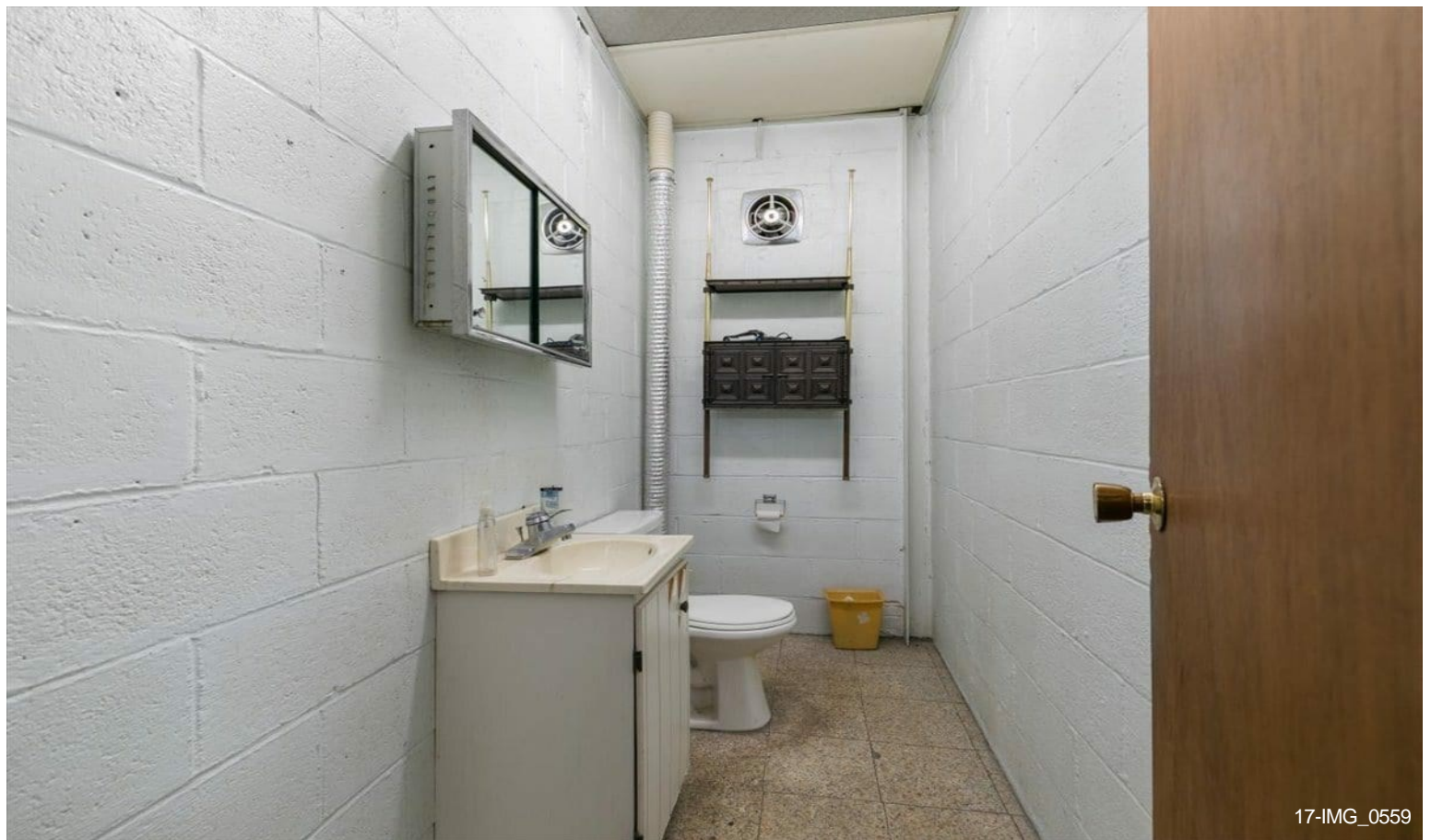
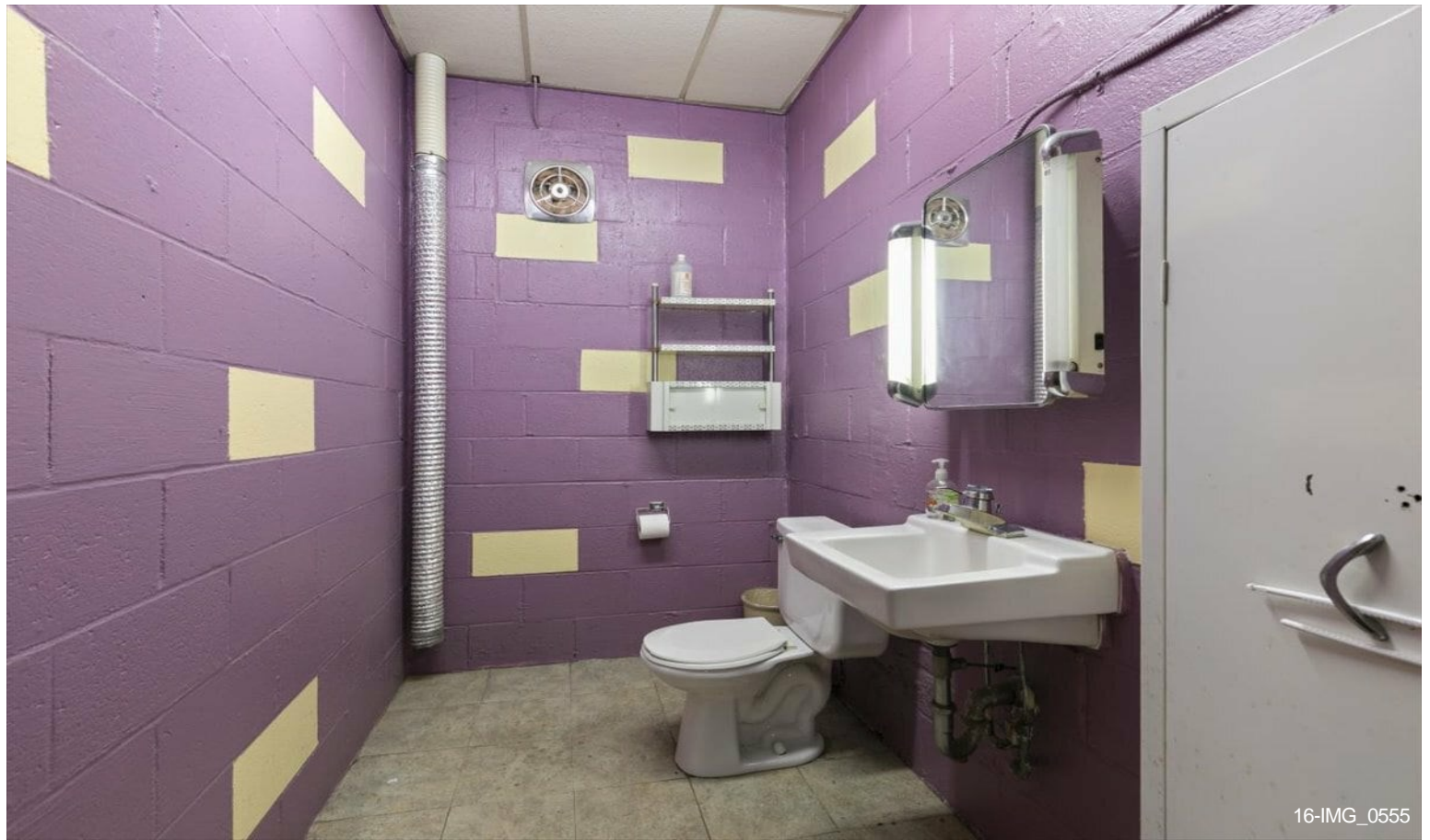


14-IMG_0552



15-IMG_0568

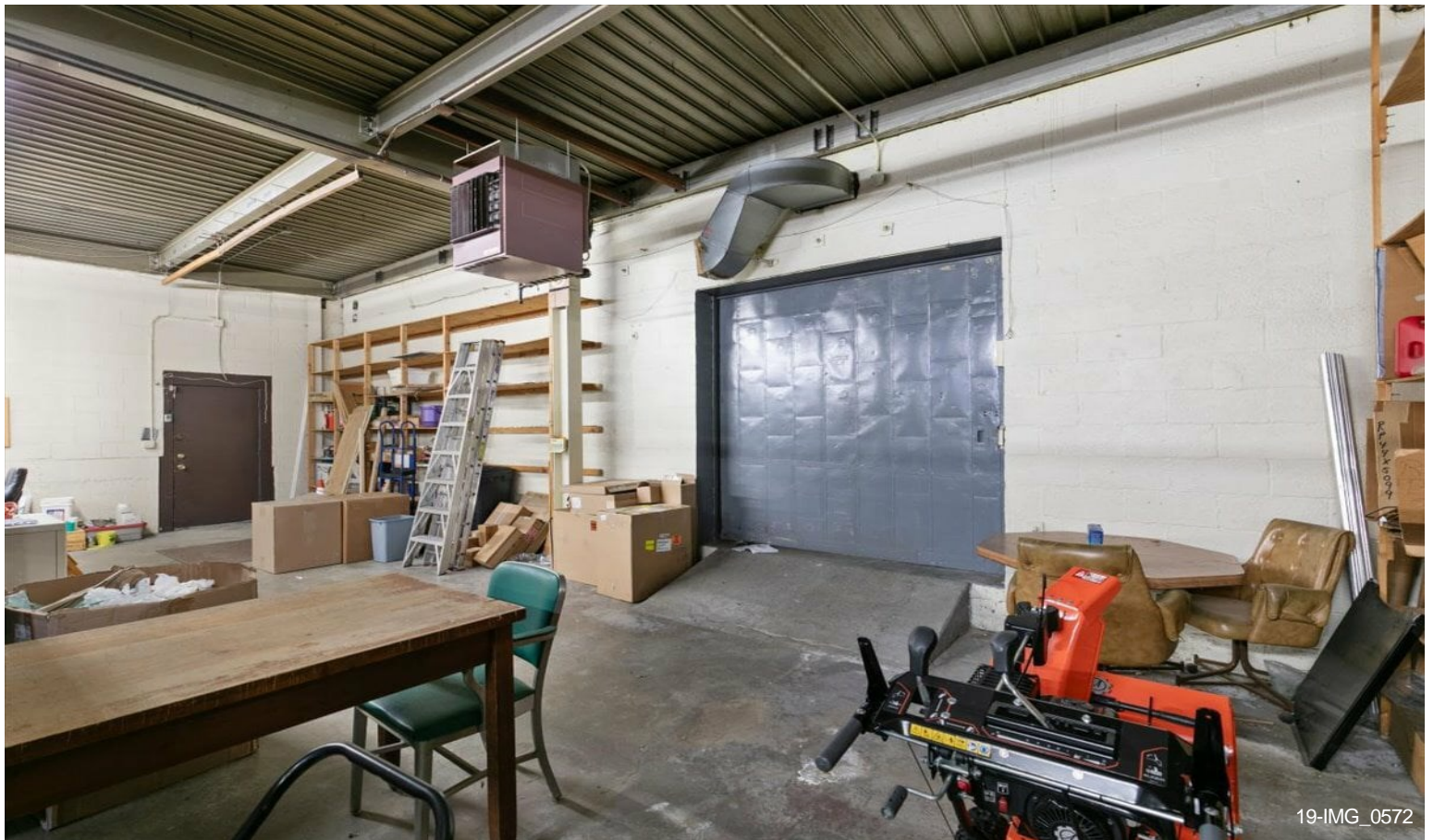
Property Photos



Property Photos

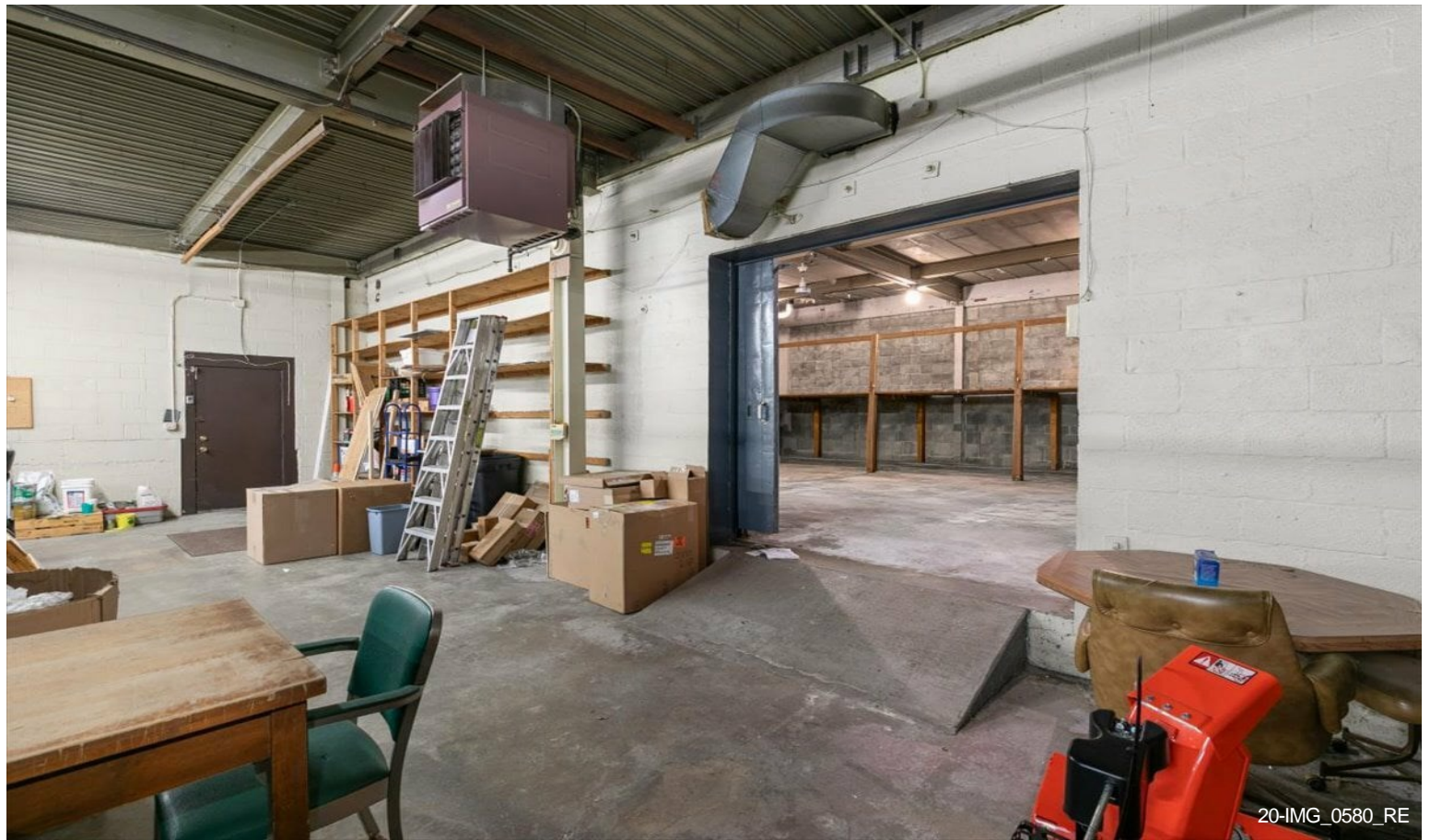


18-IMG_0563



19-IMG_0572

Property Photos

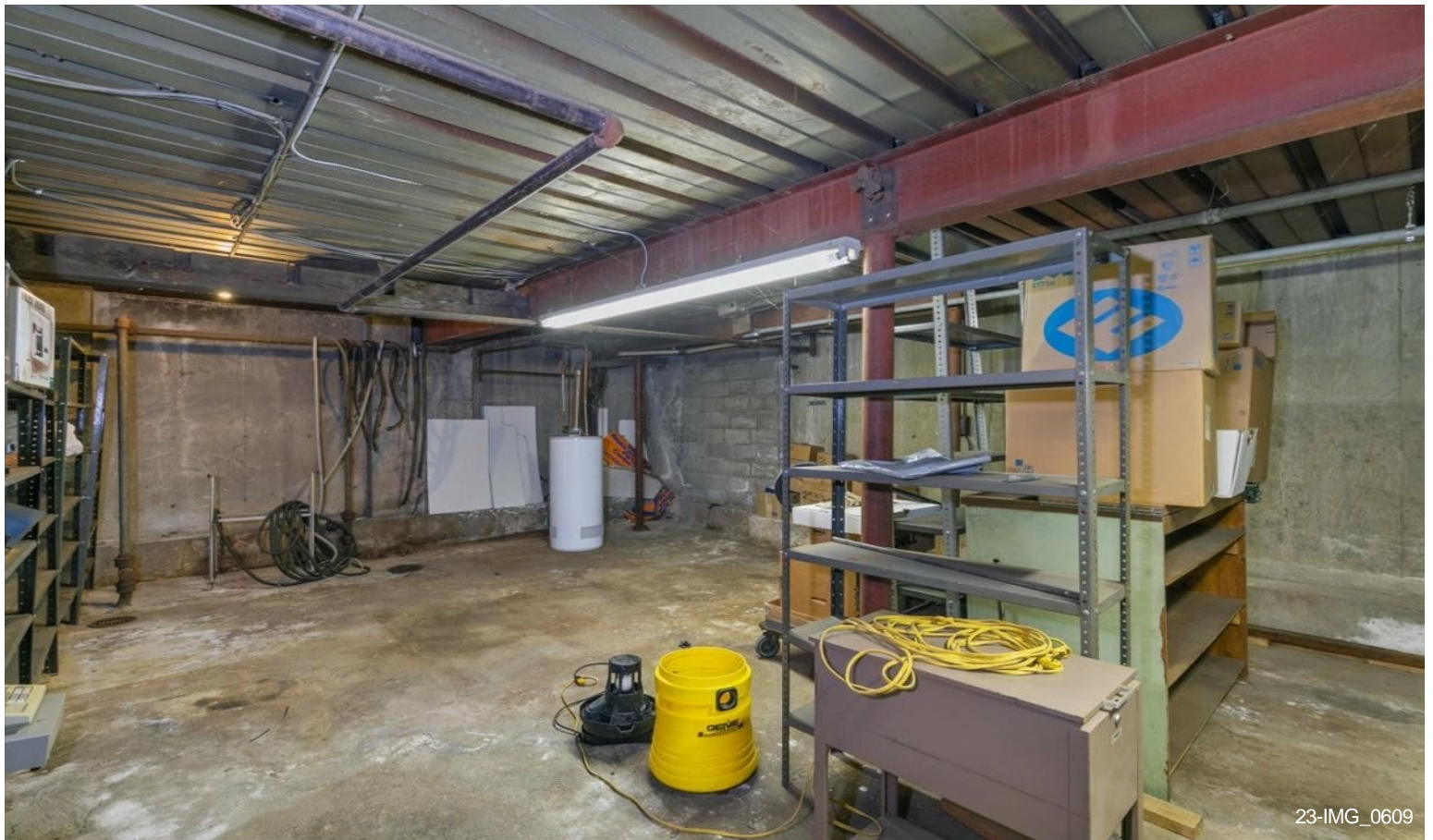
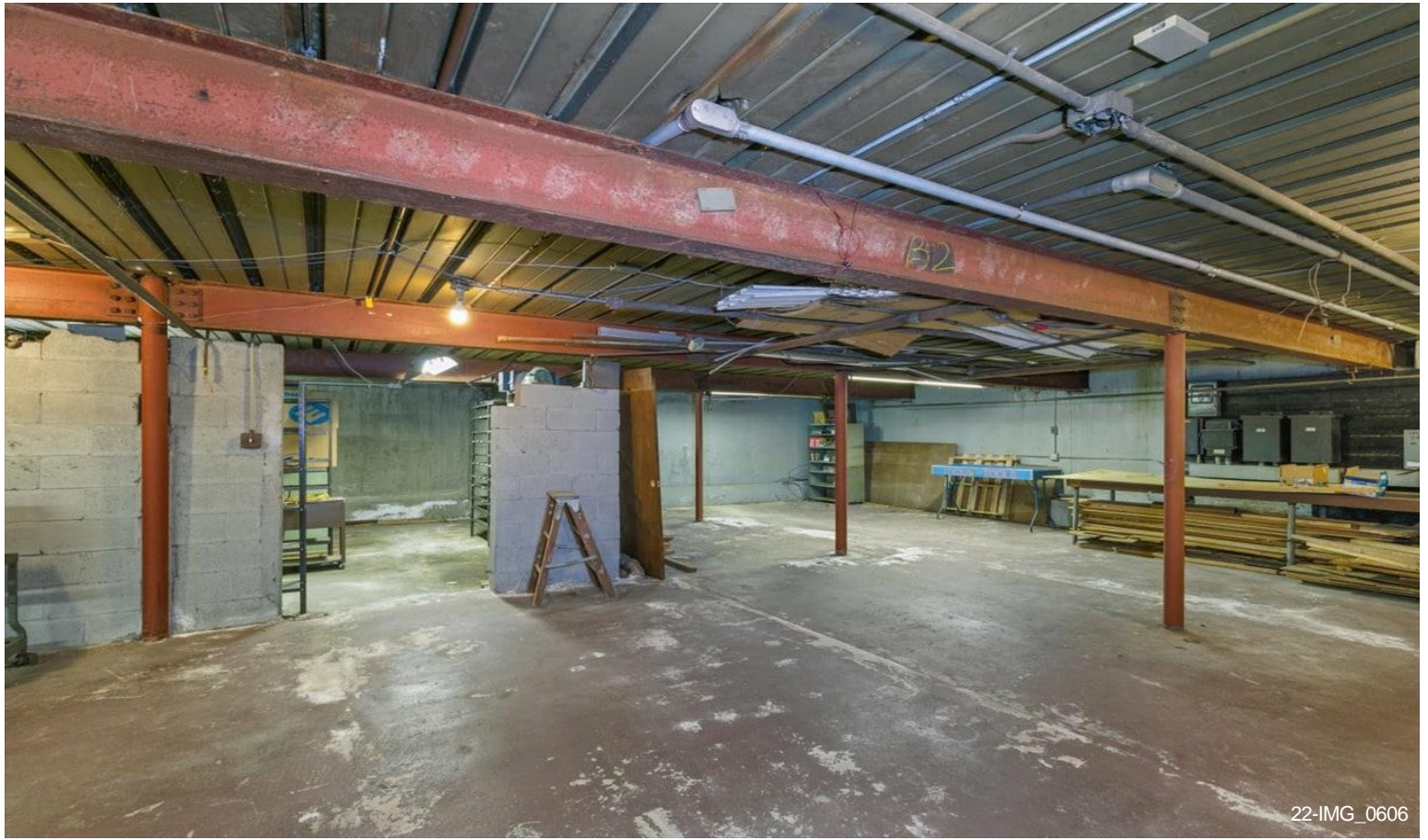


20-IMG_0580_RE

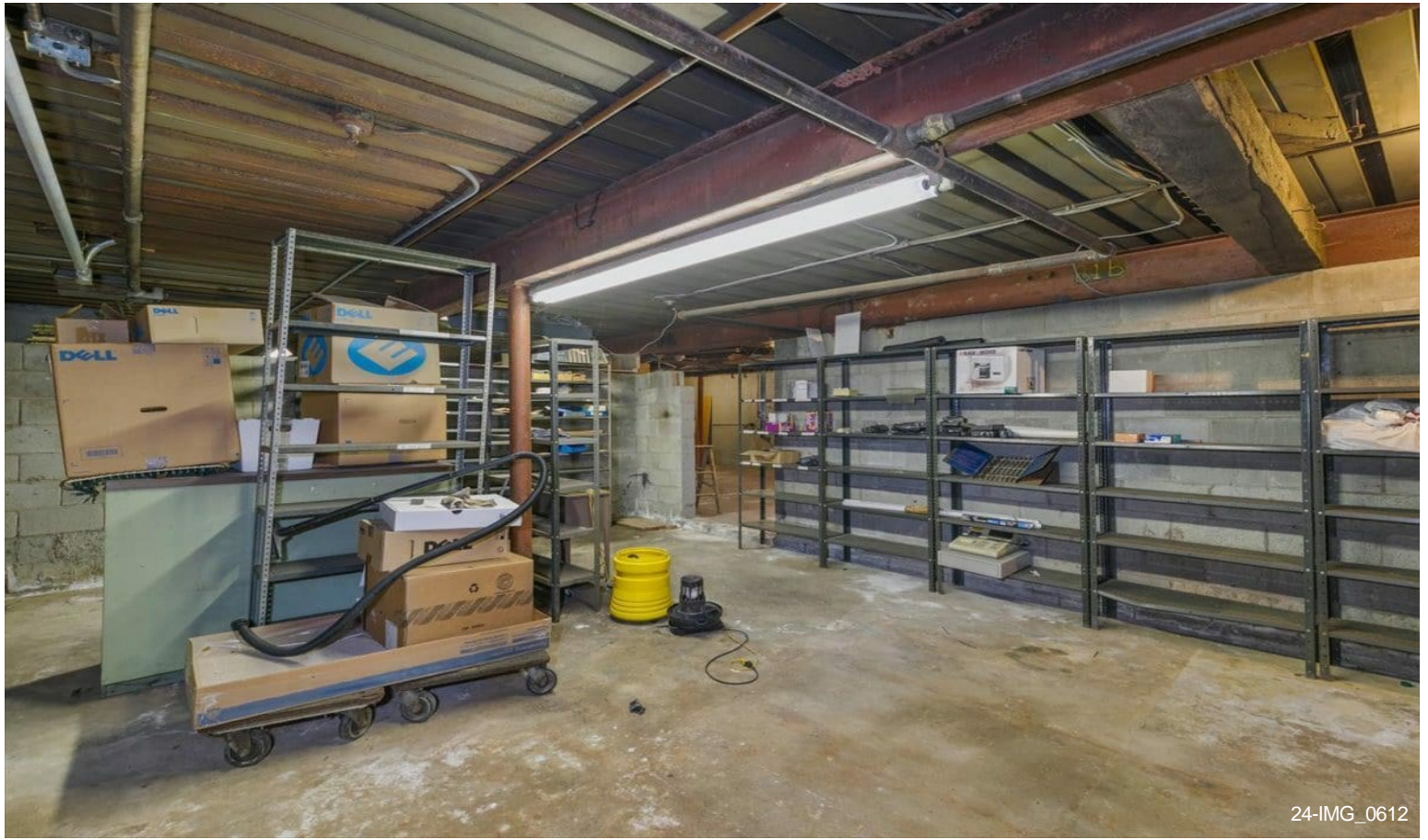


21-IMG_0576_RE

Property Photos



Property Photos



24-IMG_0612



25-IMG_0616

Property Photos



26-IMG_0618



27-5

Property Photos



Property Photos



Property Photos



Property Photos

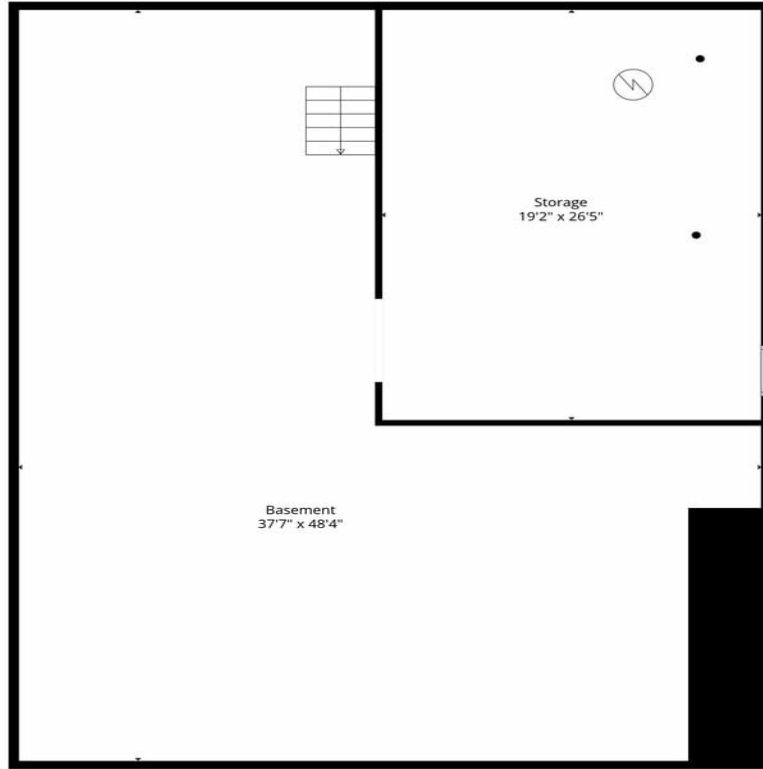


34IMG_0621



35-DJI_20260129135828_0503.D

Property Photos



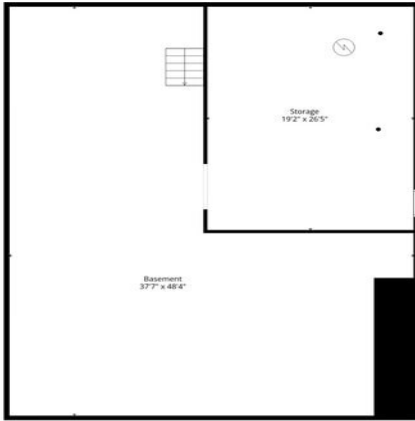
Floor Plan Created By Cubicasa App. Measurements Deemed Highly Reliable But Not Guaranteed.



Floor Plan Created By Cubicasa App. Measurements Deemed Highly Reliable But Not Guaranteed.



Property Photos



Basement 1



1st Floor

Floor Plan Created By Cubicasa App. Measurements Deemed Highly Reliable But Not Guaranteed.

