

Office Building for Sale

415 W BIJOU STREET, COLORADO SPRINGS, CO 80905

PRICE REDUCED!



Overview

Now for sale: 415 West Bijou

Discover the Perfect Westside Office Space - Just Seconds from I-25!

Welcome to 415 West Bijou, an immaculate office building nestled on the vibrant Westside of Colorado Springs, strategically located just off I-25, with easy access to Downtown Colorado Springs.

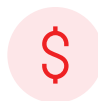
This remarkable property comprises two buildings offering diverse possibilities for your business needs.

The Front Property: Step into history with a 2,652 SF office building dating back to 1899, tastefully renovated to harmonize vintage charm with modern elegance. Inside, you'll be greeted by beautiful wood finishes and captivating vistas of the iconic Pikes Peak.

The Second Structure: Unleash your creativity with an 824 RSF building equipped with electric. We're told gas and water can be added for around \$6,000. This space, formerly a "man-cave" is an excellent opportunity for conversion into an additional office or even a stylish studio apartment.

For a private showing and the confidential financial information, call Holly Trinidad: 719-330-0999 or Tim Leigh: 719-337-9551

Property Details



Sales Price

\$650,000
\$625,000



Building Size

2,652 SF



Lot Size

0.22 Acres



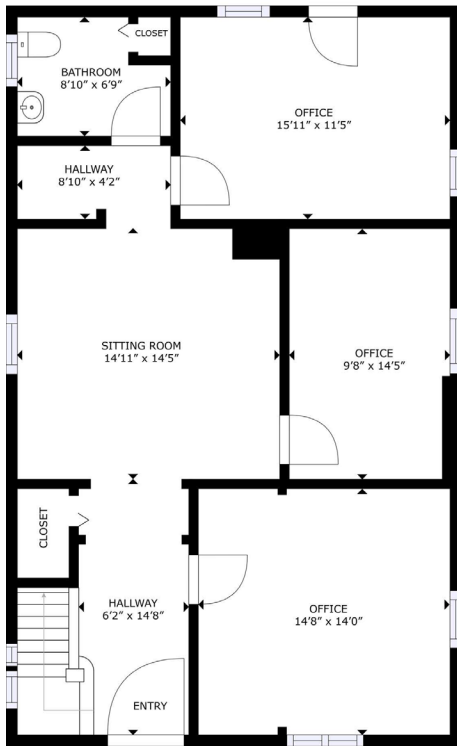
Zoning

C5CU

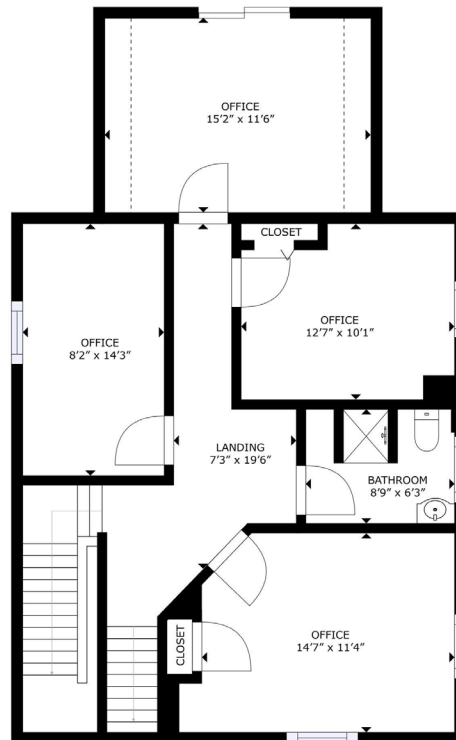
Rev: October 7, 2024

Office Building for Sale

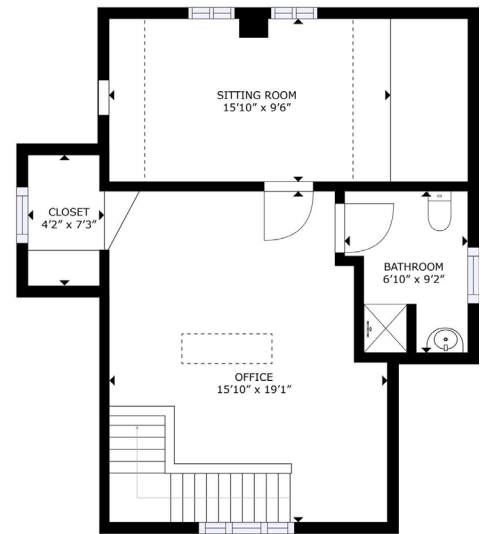
415 W BIJOU STREET, COLORADO SPRINGS, CO 80905



FLOOR 1



FLOOR 2



FLOOR 3

Rev: October 7, 2024



Our Network Is Your Edge

All information is from sources deemed reliable and is subject to errors, omissions, change of price, rental, prior sale, and withdrawal without notice. Prospect should carefully verify each item of information contained herein.

Holly Trinidad

C: 719.337.0999

O: 719.630.2277

Holly@HoffLeigh.com

Tim Leigh

C: 719.337.9551

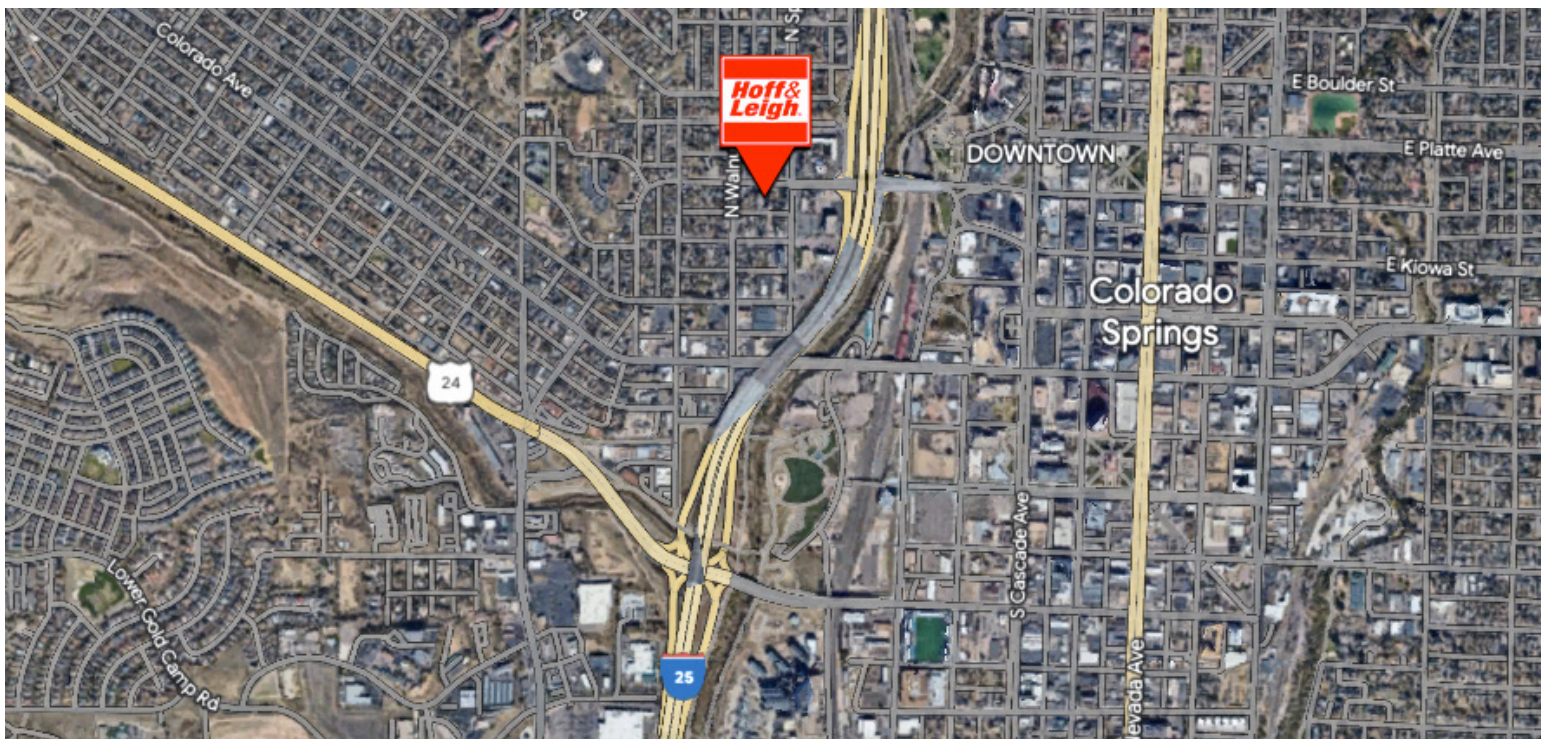
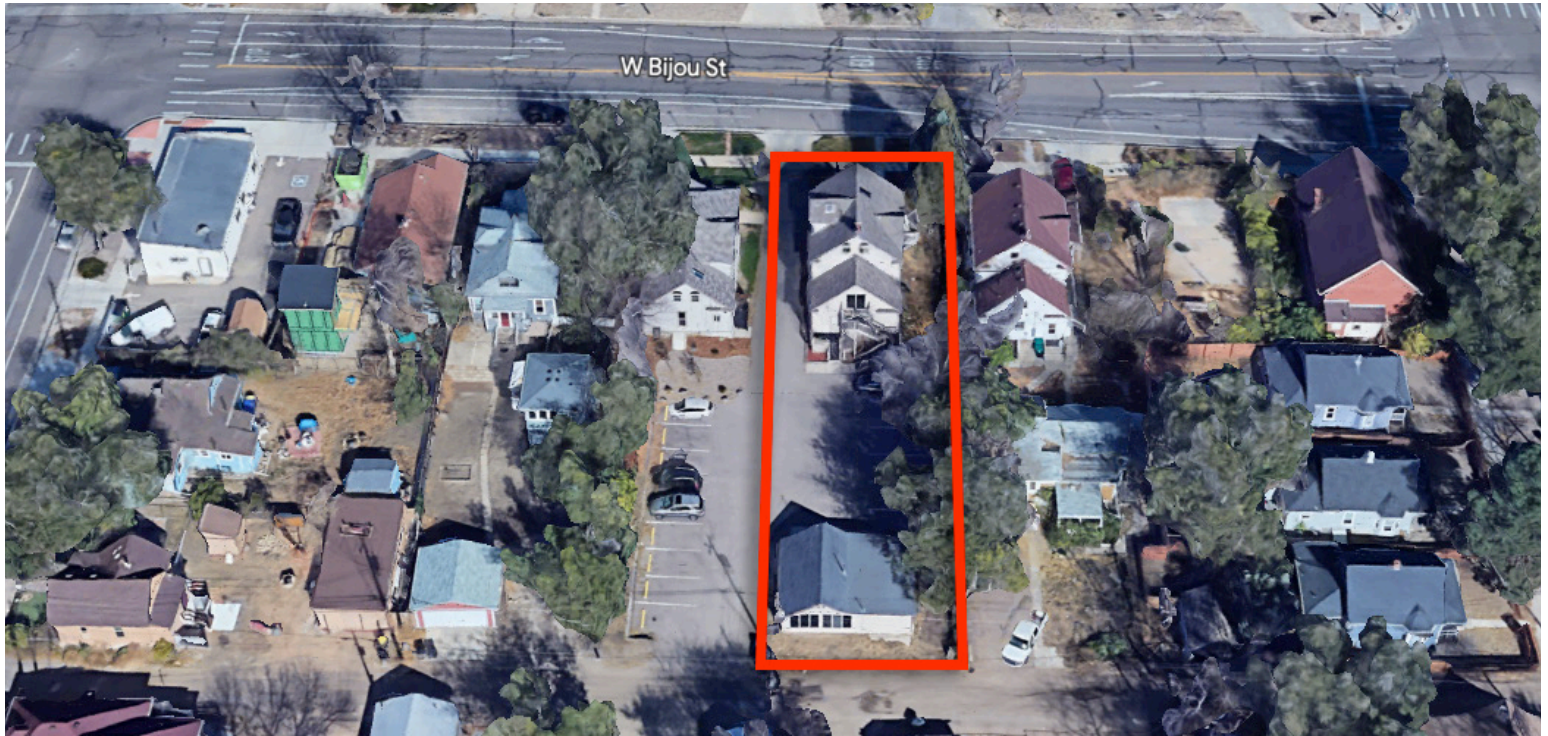
O: 719.630.2277

Tim@HoffLeigh.com



Office Building for Sale

415 W BIJOU STREET, COLORADO SPRINGS, CO 80905



Rev: October 7, 2024



Our Network Is Your Edge

All information is from sources deemed reliable and is subject to errors, omissions, change of price, rental, prior sale, and withdrawal without notice. Prospect should carefully verify each item of information contained herein.

Holly Trinidad

C: 719.337.0999

O: 719.630.2277

Holly@HoffLeigh.com

Tim Leigh

C: 719.337.9551

O: 719.630.2277

Tim@HoffLeigh.com