

FOR SALE OR LEASE



PROPERTY DETAILS

775 N. 1525 W., Farmington, UT 84025

For Lease: \$38/SF NNN
For Sale (Full/Partial Floors): \$350/SF

- Brand-new build
- Immediate access to I-15 and Highway 89
- Purchase or lease opportunity
- Suites ranging from 2,534 SF to 24,902 SF available
- Ample parking
- Medical and/or professional office space
- Ready for improvements



NEWMARK

MOUNTAIN WEST

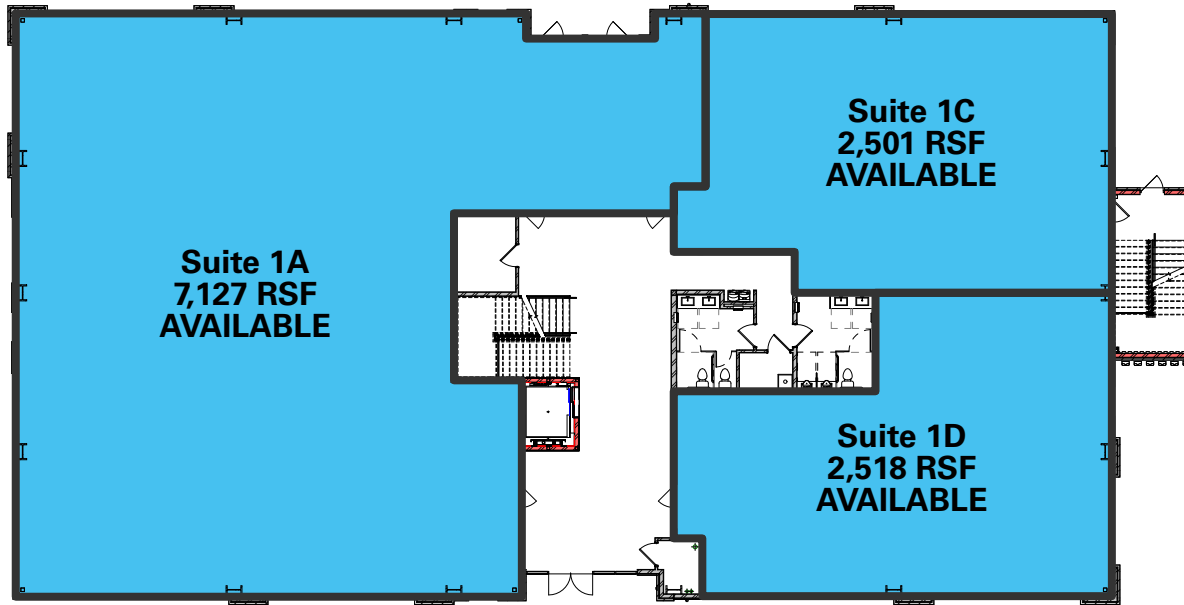
CHRIS FALK, CCIM, SIOR
 cfalk@newmarkmw.com
 direct 801.499.6514
[View Profile](#)

BRAXTON WILLIE, CCIM
 bwillie@newmarkmw.com
 direct 801.803.3334
[View Profile](#)

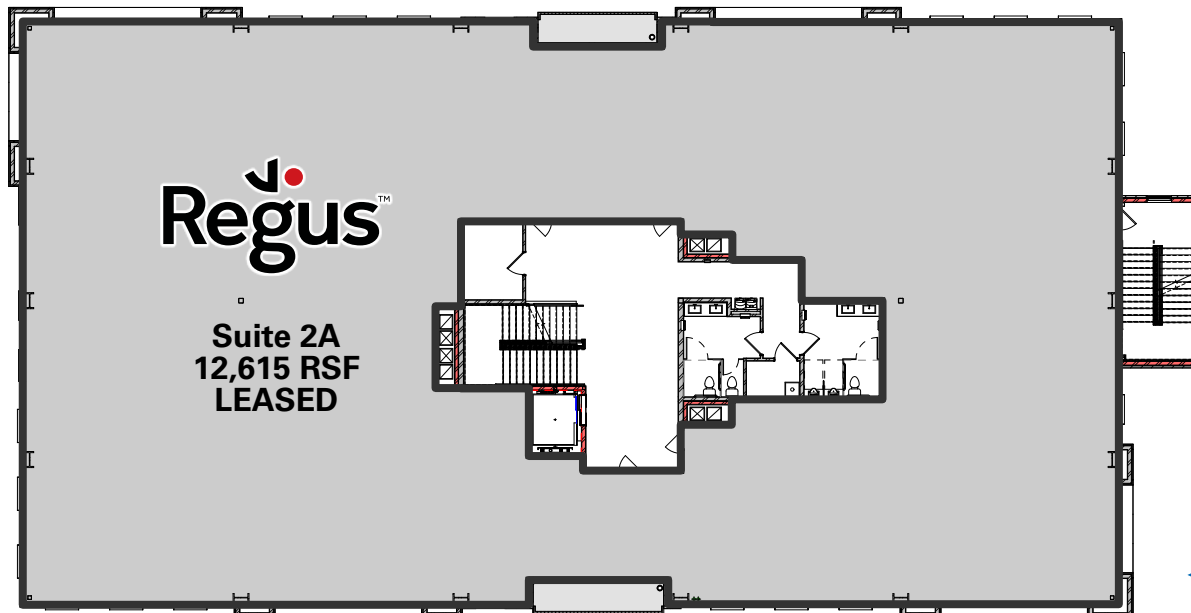
BRANSON WOOD
 bwood@newmarkmw.com
 direct 801.510.5207
[View Profile](#)

**FULL SERVICE
 COMMERCIAL REAL ESTATE**
 1410 S University Park Blvd, Ste 120
 Clearfield, Utah 84015
 Office 801.578.5580
www.newmarkmw.com

FIRST FLOOR: 2,501 – 12,146 SF AVAILABLE



SECOND FLOOR



NEWMARK

MOUNTAIN WEST

CHRIS FALK, CCIM, SIOR
cfalk@newmarkmw.com
direct 801.499.6514
[View Profile](#)

BRAXTON WILLIE, CCIM
bwillie@newmarkmw.com
direct 801.803.3334
[View Profile](#)

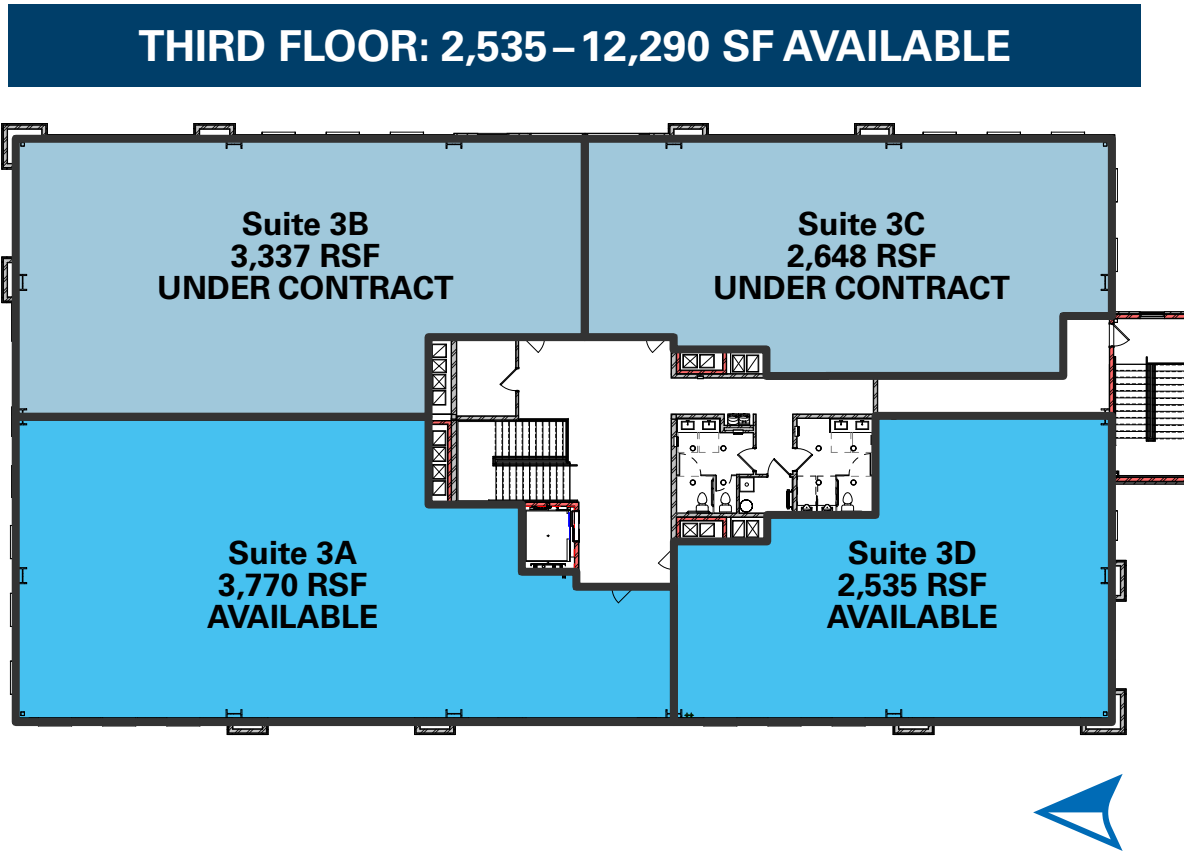
BRANSON WOOD
bwood@newmarkmw.com
direct 801.510.5207
[View Profile](#)

**FULL SERVICE
COMMERCIAL REAL ESTATE**
1410 S University Park Blvd, Ste 120
Clearfield, Utah 84015
Office 801.578.5580
www.newmarkmw.com

CHRIS FALK, CCIM, SIOR
cfalk@newmarkmw.com
direct 801.499.6514
[View Profile](#)

BRAXTON WILLIE, CCIM
bwillie@newmarkmw.com
direct 801.803.3334
[View Profile](#)

BRANSON WOOD
bwood@newmarkmw.com
direct 801.510.5207
[View Profile](#)



**FULL SERVICE
COMMERCIAL REAL ESTATE**
1410 S University Park Blvd, Ste 120
Clearfield, Utah 84015
Office 801.578.5580
www.newmarkmw.com

FARMINGTON INNOVATOR

CURRENTLY UNDER CONSTRUCTION



NEWMARK

 MOUNTAIN WEST

CHRIS FALK, CCIM, SIOR
cfalk@newmarkmw.com
direct 801.499.6514
[View Profile](#)

BRAXTON WILLIE, CCIM
bwillie@newmarkmw.com
direct 801.803.3334
[View Profile](#)

BRANSON WOOD
bwood@newmarkmw.com
direct 801.510.5207
[View Profile](#)

**FULL SERVICE
COMMERCIAL REAL ESTATE**
1410 S University Park Blvd, Ste 120
Clearfield, Utah 84015
Office 801.578.5580
www.newmarkmw.com



CHRIS FALK, CCIM, SIOR
 cfalk@newmarkmw.com
 direct 801.499.6514
[View Profile](#)

BRAXTON WILLIE, CCIM
 bwillie@newmarkmw.com
 direct 801.803.3334
[View Profile](#)

BRANSON WOOD
 bwood@newmarkmw.com
 direct 801.510.5207
[View Profile](#)

**FULL SERVICE
 COMMERCIAL REAL ESTATE**
 1410 S University Park Blvd, Ste 120
 Clearfield, Utah 84015
 Office 801.578.5580
www.newmarkmw.com