

# 680 Murphy Ave | Atlanta, GA 30310



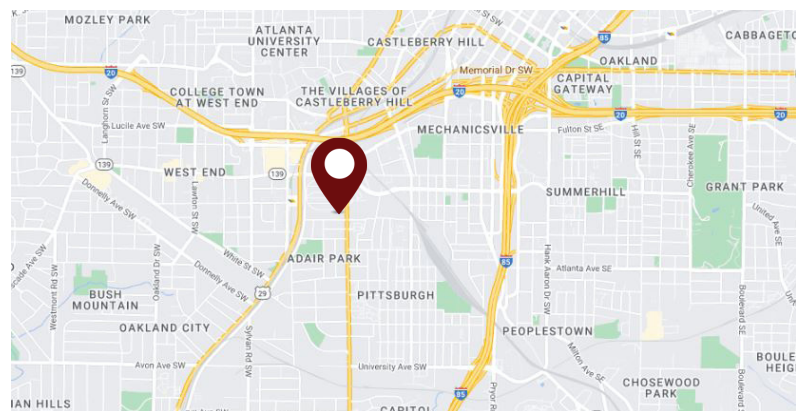
## INDUSTRIAL SPACE FOR SUBLEASE

### Property Features:

- ▶ Suite 1068: 20,000 SF
- ▶ 3 Dock High Doors (shared)
- ▶ 18' - 19' Clear Height
- ▶ Sublease 1-2 year term

### Location Overview:

Located right off Northside Dr in Downtown Atlanta, this business park provides access to all the major highways in Atlanta through a major interchange.



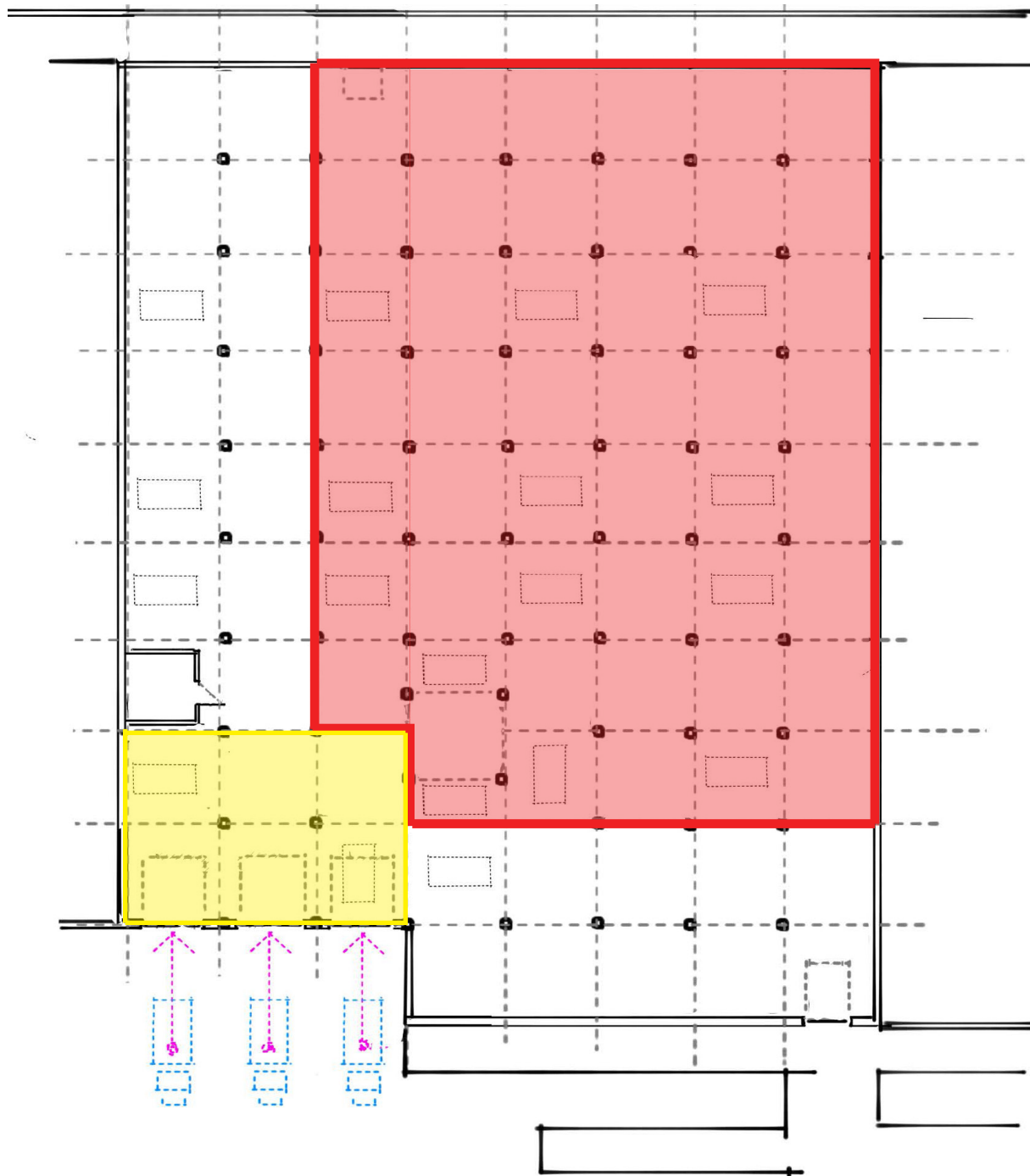
**WILSON  
HULL  
& NEAL**  
REAL ESTATE, LLC

1600 NORTHSIDE DRIVE NW  
Suite 100  
ATLANTA, GA 30318  
404.352.1882  
WHNRE.COM

Matt Sirockman | Associate  
C: 404.202.2222  
msirockman@whnre.com

Every effort has been made to provide accurate information, but no liability is assumed for errors or omissions.

# 680 Murphy Ave | Atlanta, GA 30310



RED = Sublease area  
YELLOW = Common loading area



1600 NORTHSIDE DRIVE NW  
Suite 100  
ATLANTA, GA 30318  
404.352.1882  
WHNRE.COM

Matt Sirockman | Associate  
C: 404.202.2222  
msirockman@whnre.com

Every effort has been made to provide accurate information, but no liability is assumed for errors or omissions.



# 680 Murphy Ave | Atlanta, GA 30310



1600 NORTHSIDE DRIVE NW  
Suite 100  
ATLANTA, GA 30318  
404.352.1882  
WHNRE.COM

Matt Sirockman | Associate  
C: 404.202.2222  
msirockman@whnre.com

Every effort has been made to provide accurate information, but no liability is assumed for errors or omissions.