



FOR MORE INFORMATION CONTACT:

BOBBY TALBOT, CCIM
(504) 525-9763
BTALBOT@TALBOT-REALTY.COM

JOHNNY GIAVOTELLA
(504) 858-1347
JGIAVOTELLA@TALBOT-REALTY.COM

612 CLEARVIEW PARKWAY

METAIRIE, LA

Property Address:	612 Clearview Parkway Metairie, LA 70001
Sale Price:	\$400,000
Rental Rate:	\$2,350.00 per month, NNN. The NNN charges are estimated to be \$1,004.55 per month.
Building Area:	2,160 square feet
Lot Size:	5,760 square feet
Loading Door:	1 ground level door: 8'(h) x 9'(w)
Zoning:	GO-2, General Offices District
Parking:	5 parking spaces in rear lot
Comments:	This property is a 2-story office building with a storage area that is ideally suited for a general contractors office or for a service business.

All showings are by appointment only.

The information in this brochure has been obtained from sources believed reliable. While we do not doubt its accuracy we have not verified it and make no guarantee, warranty or representation about it. It is your responsibility to independently confirm its accuracy and completeness. Any projections, opinions, assumptions, or estimates used are for example only and do not represent the current or future performance of the property. The value of this transaction to you depends on tax and other factors which should be evaluated by your tax, financial and legal advisor. You and your advisors should conduct a careful, independent investigation of the property to determine to your satisfaction the suitability of the property for your needs. October 2024



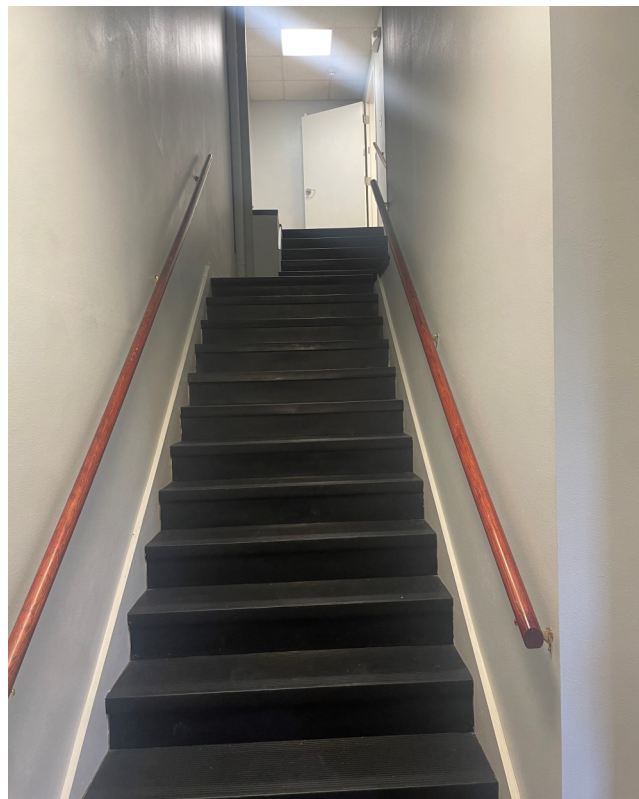
612 CLEARVIEW PARKWAY

METAIRIE, LA



612 CLEARVIEW PARKWAY

METAIRIE, LA



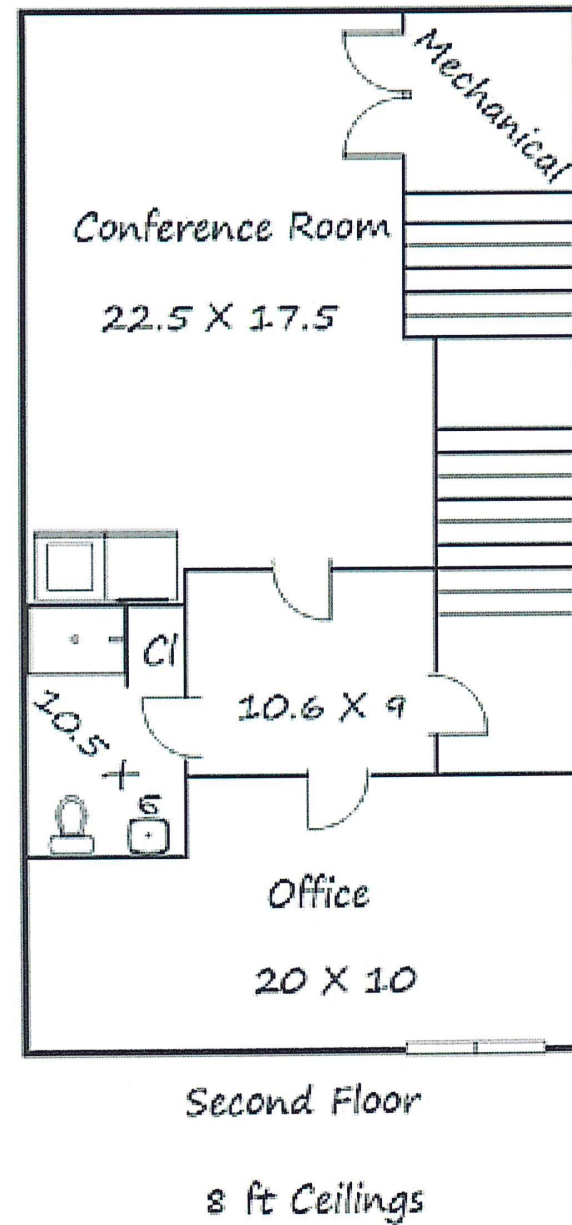
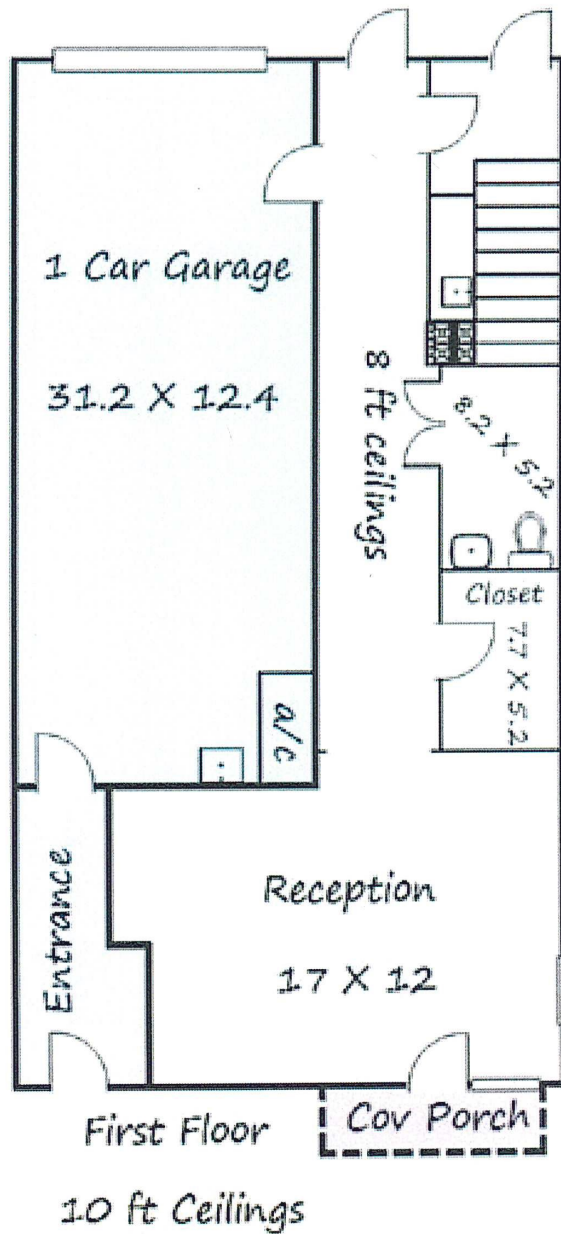
612 CLEARVIEW PARKWAY

METAIRIE, LA



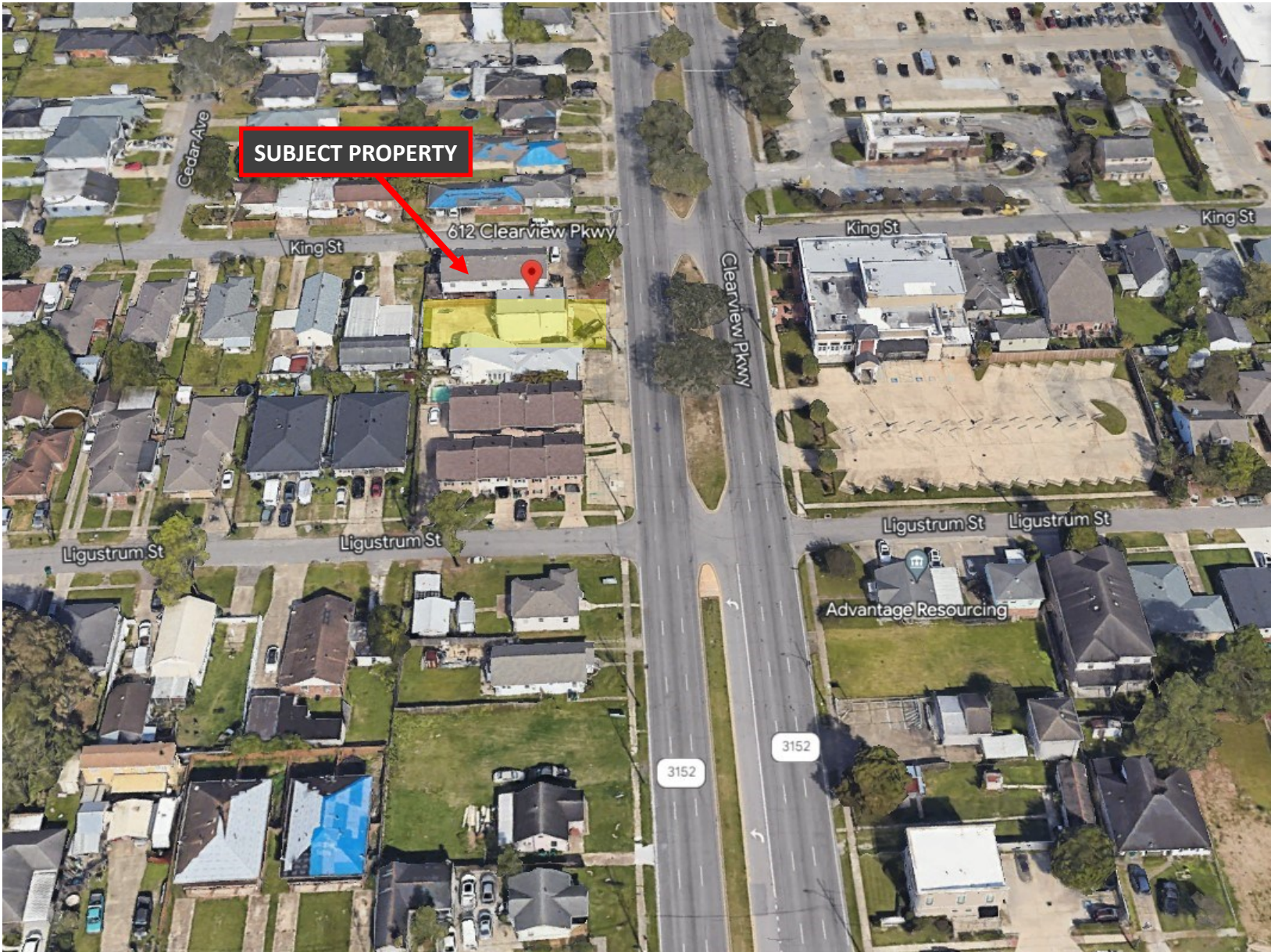
612 CLEARVIEW PARKWAY

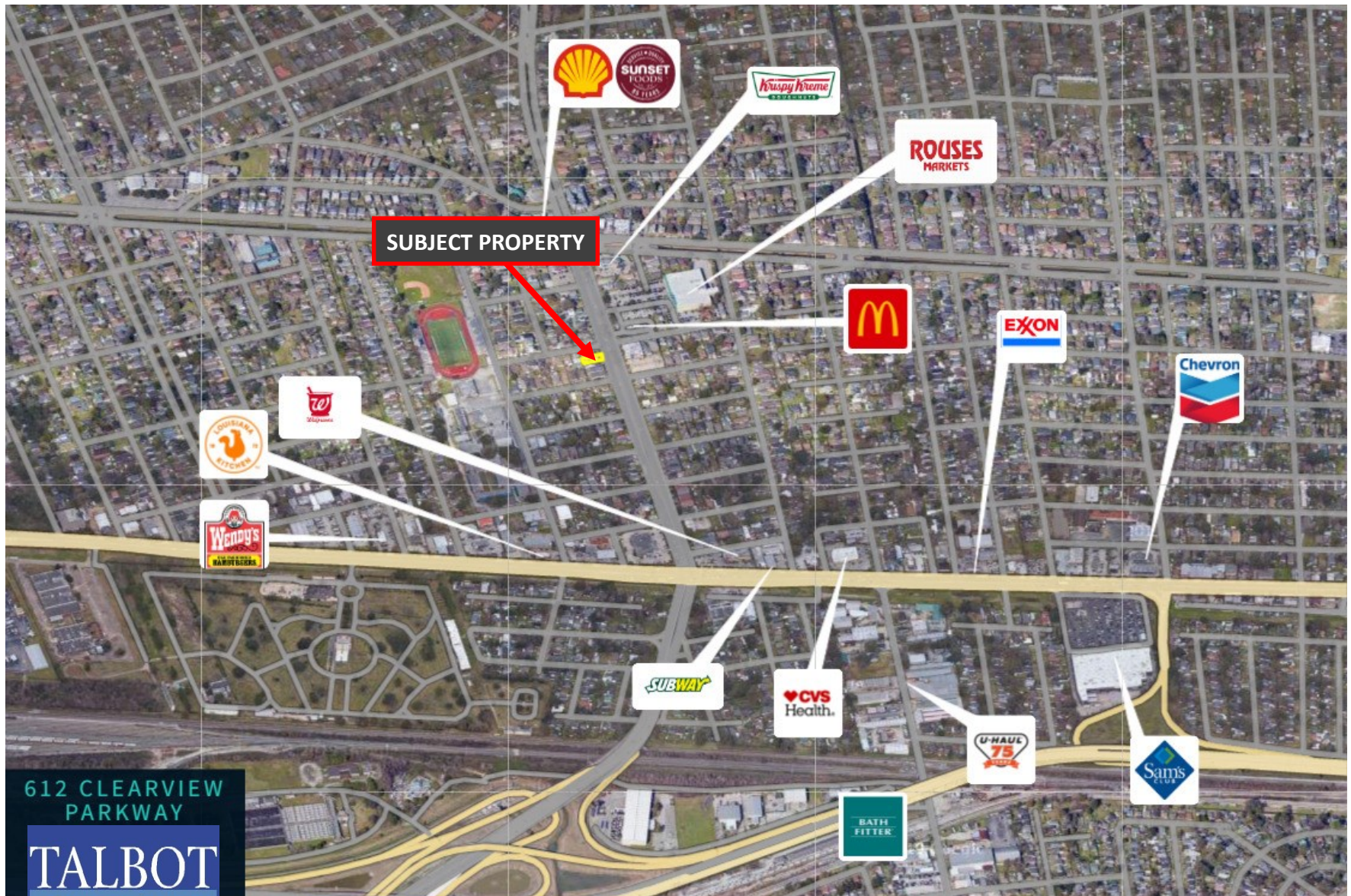
METAIRIE, LA



612 CLEARVIEW PARKWAY

METAIRIE, LA





612 CLEARVIEW
PARKWAY

TALBOT
REALTY GROUP

POINTS OF INTEREST

612 CLEARVIEW PARKWAY

METAIRIE, LA

