

# Wellington Centre

FOR SUBLEASE

# 14643

DALLAS PKWY



11,470 SF AVAILABLE  
Suite 775 - 5,903 SF  
Suite 1050 - 5,567 SF

14643 DALLAS PKWY | ADDISON, TX 75254

AVISON  
YOUNG





## HIGHLIGHTS

# 11,470 sf office space on two floors - prime location - Addison, TX

- Suite 775: 5,903 RSF and Suite 1050: 5,567 RSF
- Ideal North Tollway location
- Convenient access to restaurants and retail
- Tenant lounge, conference center and fitness center
- Structured parking and surface visitor available

## Get More Information

**Greg Langston, Managing Director, Principal**  
214 617 6882  
[greg.langston@avisonyoung.com](mailto:greg.langston@avisonyoung.com)

**Brian Whittington, Principal**  
214 478 7485  
[brian.whittington@avisonyoung.com](mailto:brian.whittington@avisonyoung.com)

**Will Dorn, Associate**  
706 993 7107  
[will.dorn@avisonyoung.com](mailto:will.dorn@avisonyoung.com)



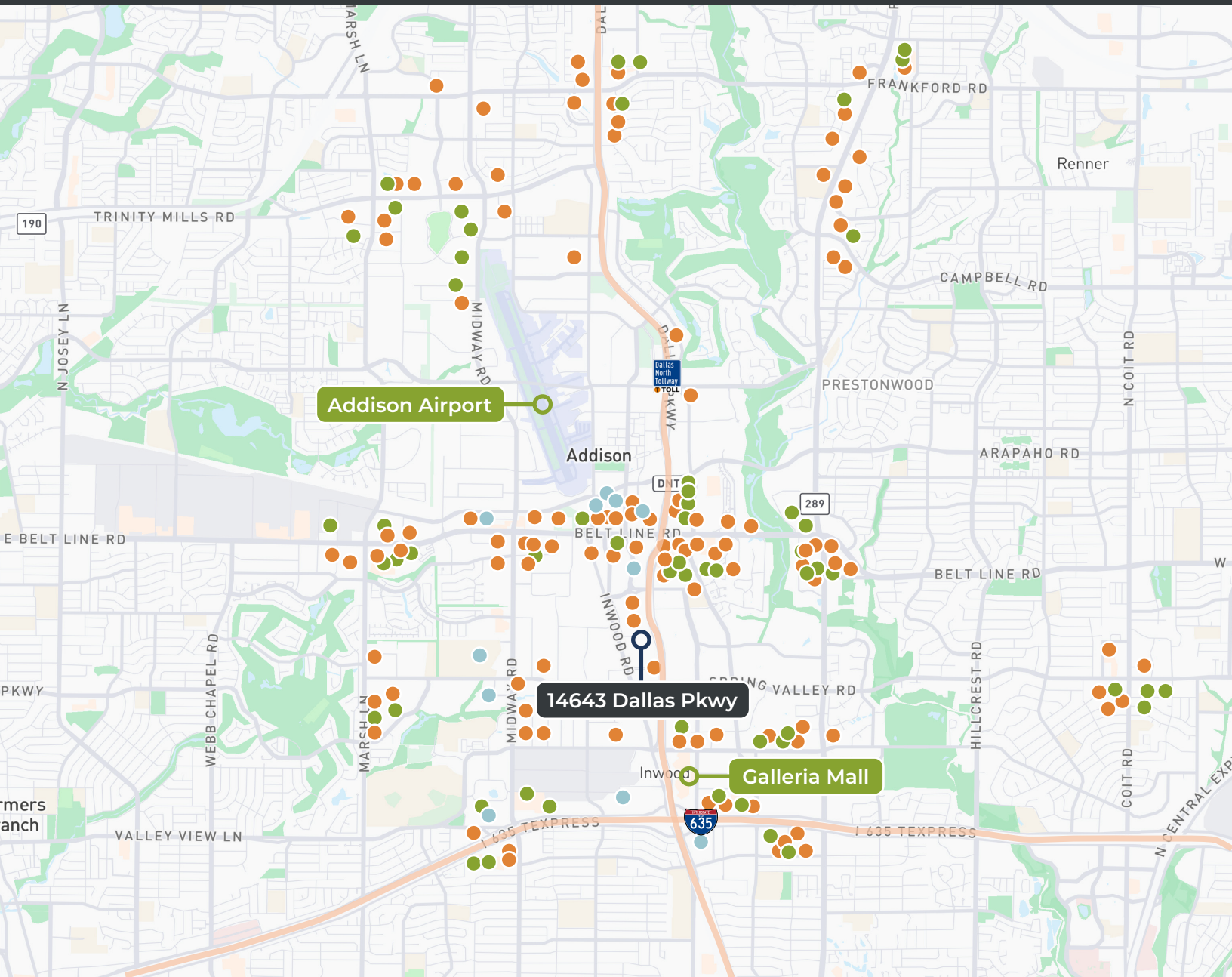


SUMMARY

Lease type:	Base lease rate + E	Sublease expiration:	March 31, 2027
Premises RBA:	11,470 RSF	Sublease rate:	Negotiable

AVAILABLE SPACE

Suite	Size (sf)	Lease type	Base lease rate	Description
775	5,903	+E	Negotiable	7th floor
1050	5,567	+E	Negotiable	10th floor



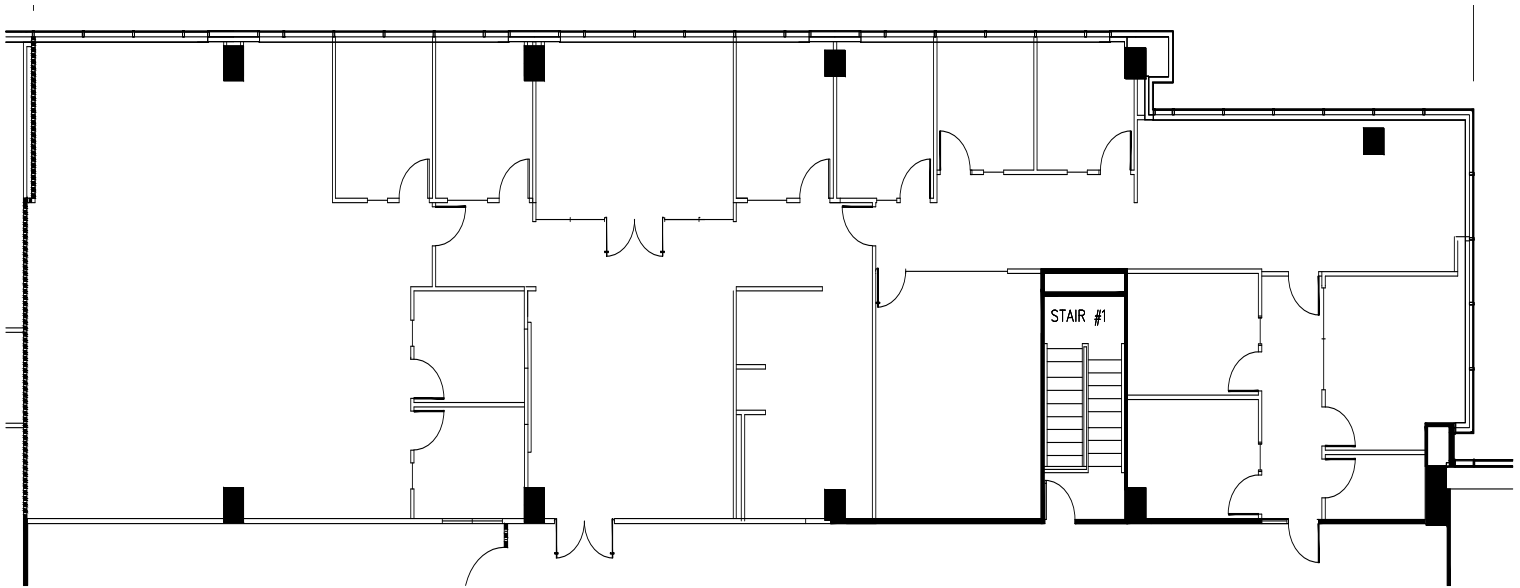
● RESTAURANT ● RETAIL ● HOTEL

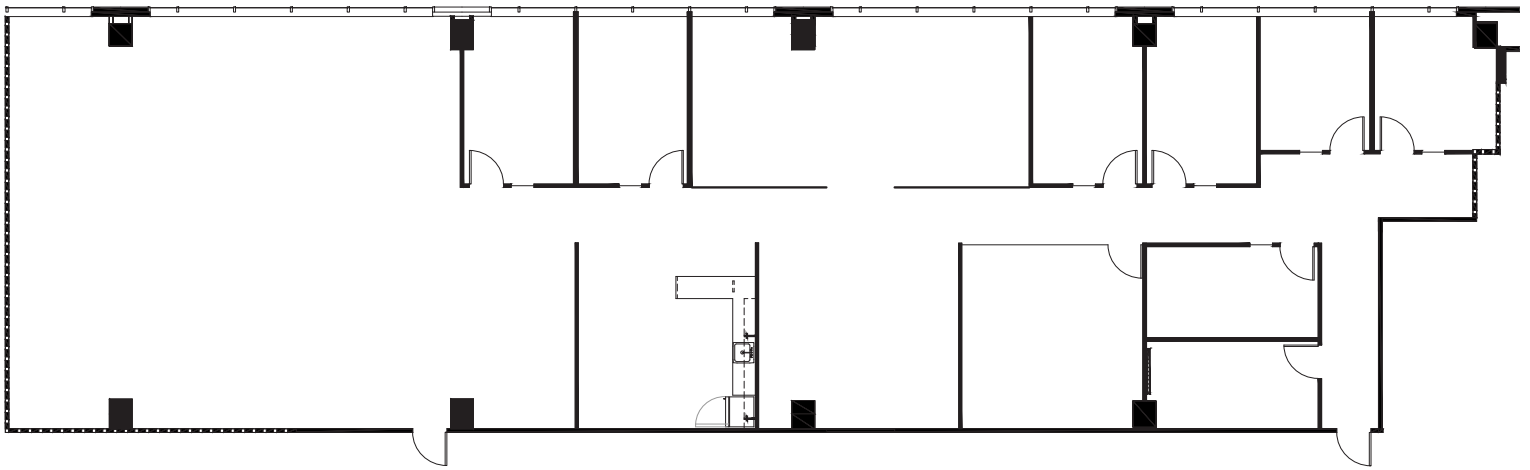
**150+**  
restaurant  
options  
within 5 miles

**200+**  
retail  
options  
within 5 miles

**20**  
lodge  
options  
within 4 miles

**4**  
nature  
trails  
within 5 miles









## Get More Information

**Greg Langston, Managing Director, Principal**  
214 617 6882  
[greg.langston@avisonyoung.com](mailto:greg.langston@avisonyoung.com)

**Will Dorn, Associate**  
706 993 7107  
[will.dorn@avisonyoung.com](mailto:will.dorn@avisonyoung.com)

**Brian Whittington, Principal**  
214 478 7485  
[brian.whittington@avisonyoung.com](mailto:brian.whittington@avisonyoung.com)

**AVISON  
YOUNG**

[AvisonYoung.com](https://www.AvisonYoung.com)