

Industrial | For Sublease

CBRE

Prime Industrial

145,350 sq. ft. | Santa Teresa, New Mexico

655 Industrial Ave, Ste B.
Santa Teresa, New Mexico
88008

FEE is Available to Include In-Place Racking and forklifts.
Ideal for a plug and play Industrial Operation

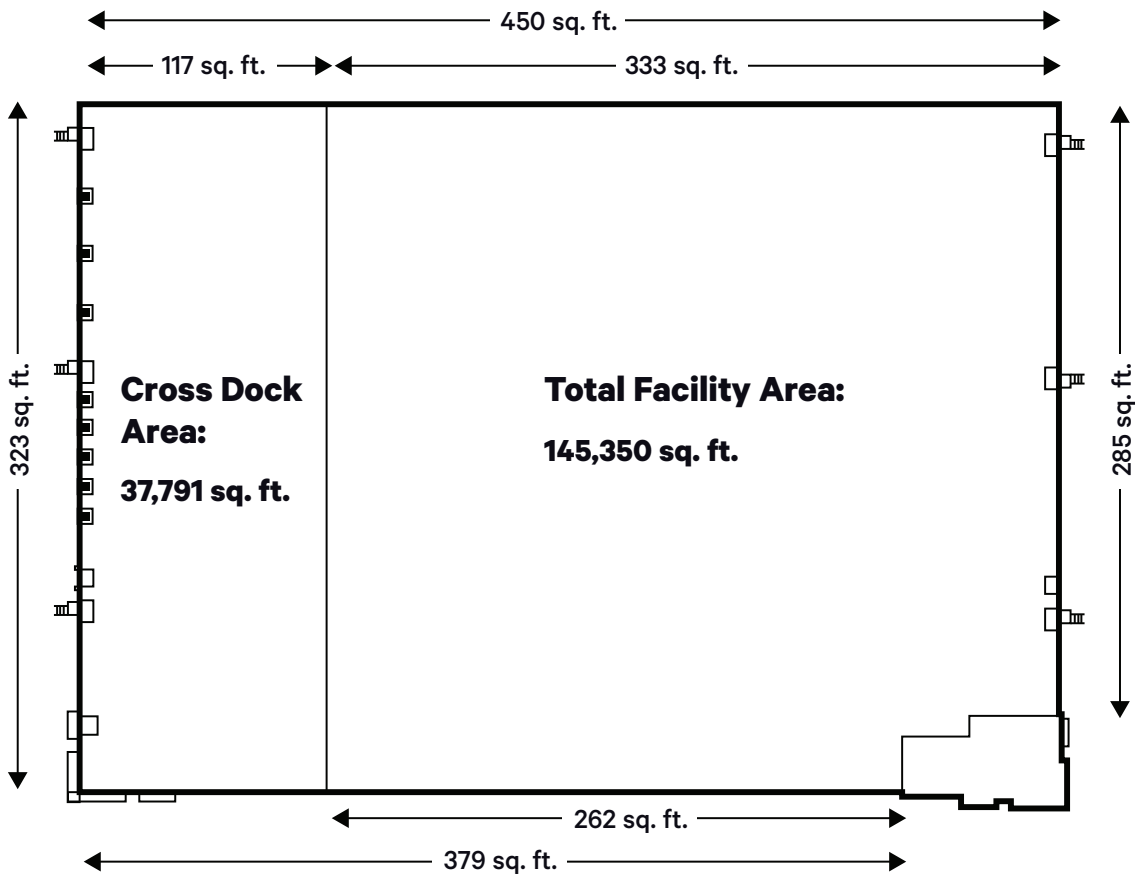
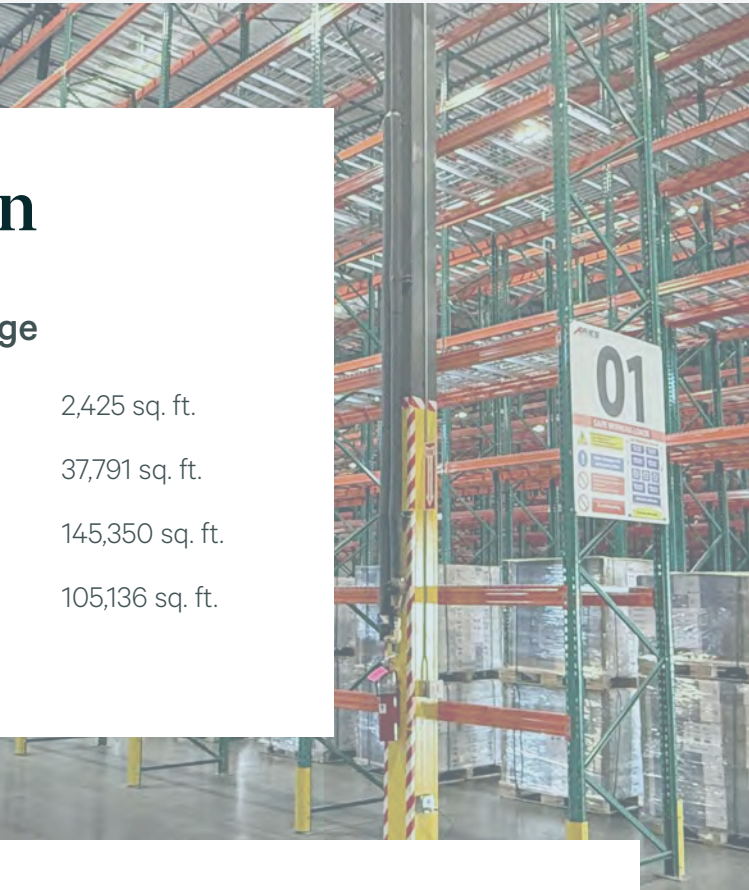




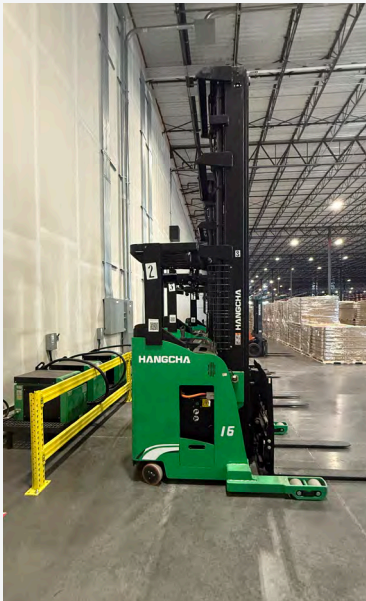
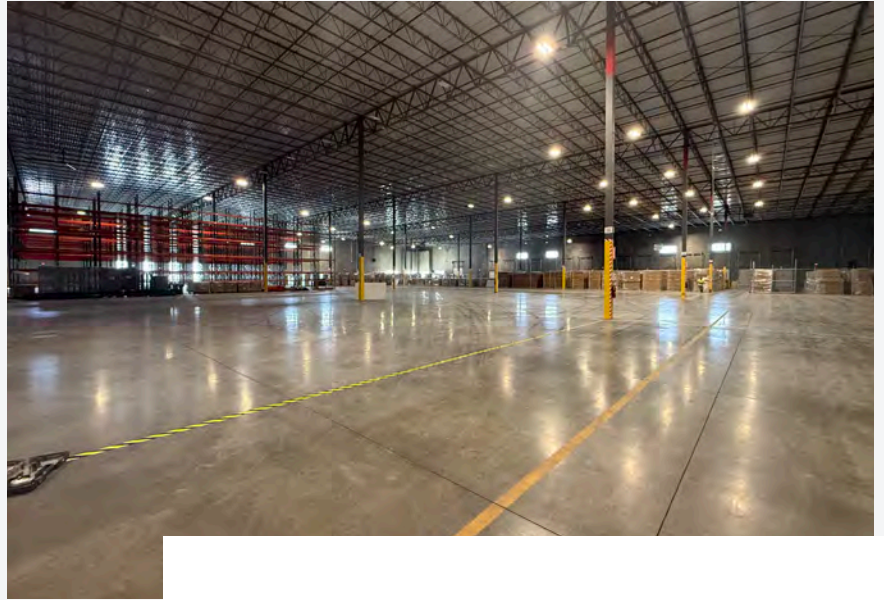
Site Plan

Square Footage

Office Area:	2,425 sq. ft.
Cross Dock Area:	37,791 sq. ft.
Warehouse Area:	145,350 sq. ft.
FTZ Area:	105,136 sq. ft.



For Sublease



Building Specs

- **30**

Dock Doors

- **02**

Ramps

- **± 36'**

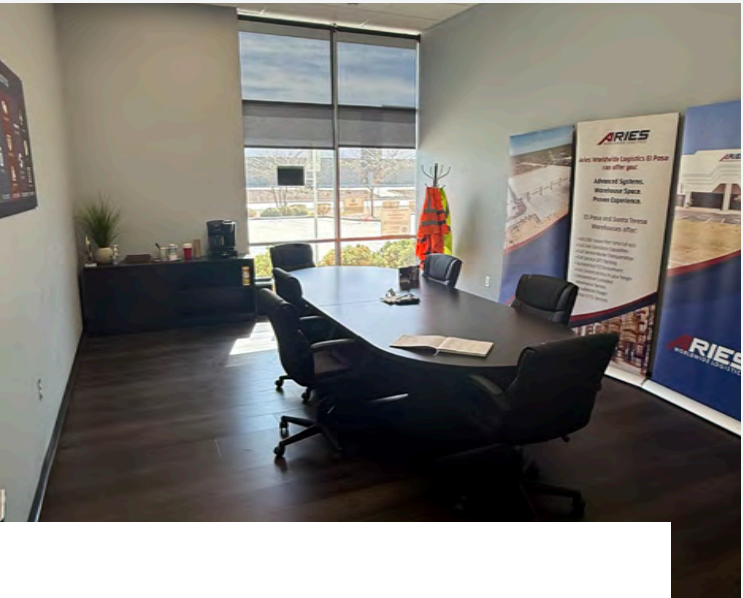
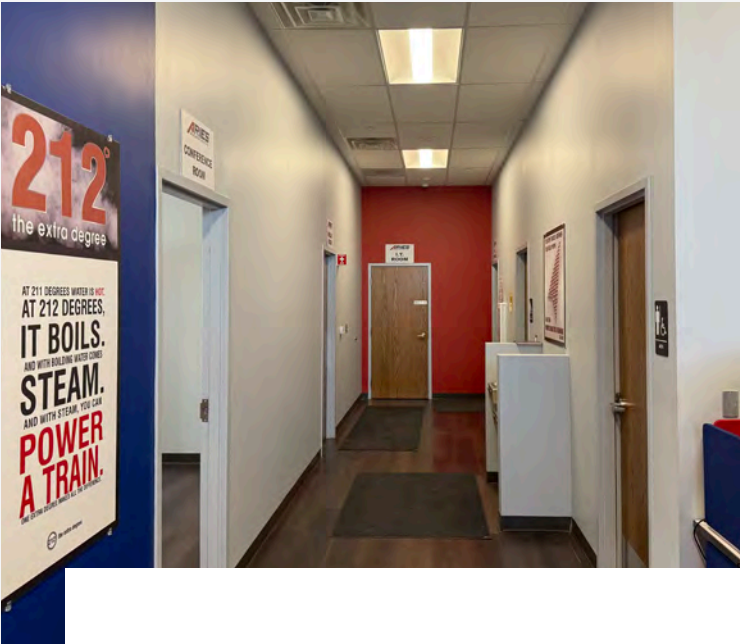
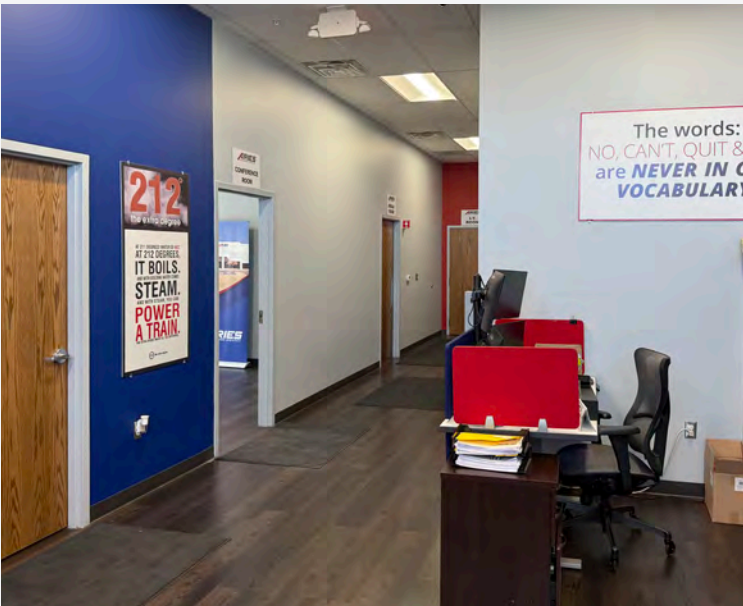
Clear Height

- **± 54' x 55'**

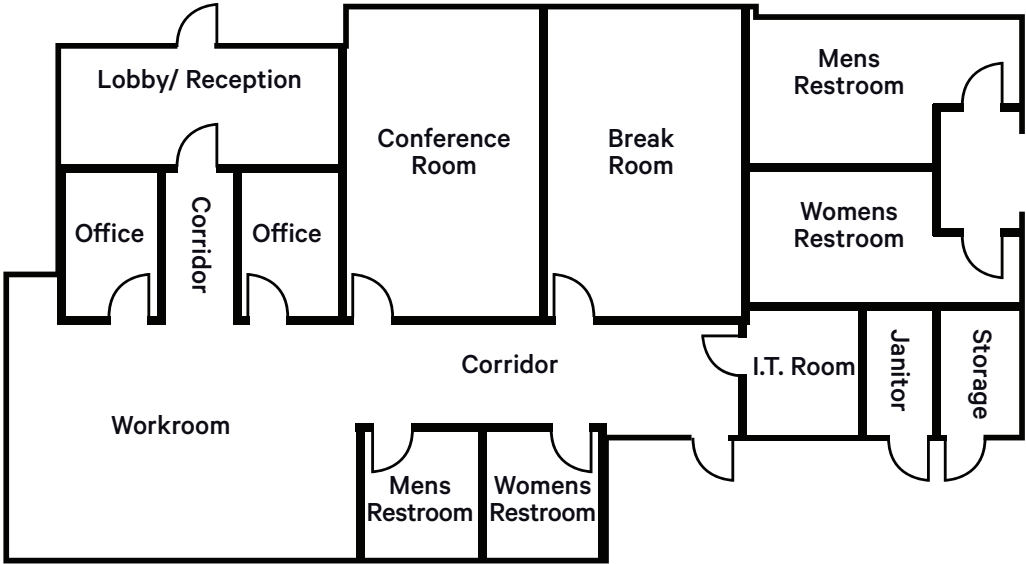
Column Spacing

- **Concrete Tilt Wall**

Construction



Office Plan





±6 Miles
to INTL Port of Entry



±10 Miles
to Interstate 10

Contact Us

Jacob Quinn

D: +1 915 313 8815

C: +1 915 269 6786

jacob.quinn@cbre.com

Ricardo Fernandez

D: +1 915 313 8817

C: +1 915 539 2083

ricardo.fernandez@cbre.com

© 2025 CBRE, Inc. All rights reserved. This information has been obtained from sources believed reliable, but has not been verified for accuracy or completeness. You should conduct a careful, independent investigation of the property and verify all information. Any reliance on this information is solely at your own risk. CBRE and the CBRE logo are service marks of CBRE, Inc. All other marks displayed on this document are the property of their respective owners, and the use of such logos does not imply any affiliation with or endorsement of CBRE. Photos herein are the property of their respective owners. Use of these images without the express written consent of the owner is prohibited.

LICENSE HOLDER CONTACT INFORMATION: This notice is being provided for information purposes. It does not create an obligation for you to use the broker's services. Please acknowledge receipt of this notice below and retain a copy for your records.