

West Side of E. Russell Schmidt Blvd.

Chesterfield Twp., MI



As exclusive agents, we are pleased to offer the following property for sale:

- ◆ 2.48 Acres
- ◆ 252' Frontage
- ◆ Zoned M-2
- ◆ Minutes to I-94
- ◆ Established Industrial Park
- ◆ Sale Price: \$195,000



Bob Pagano 248.357.6576 bpagano@ngkf.com

**Newmark
Knight Frank**

27725 Stansbury Blvd, Suite 300, Farmington Hills, MI 48334

The information contained herein has been obtained from sources deemed reliable but has not been verified and no guarantee, warranty or representation, either express or implied, is made with respect to such information. Terms of sale or lease and availability are subject to change or withdrawal without notice.

LAND – For Sale

2.48 Acres – West Side, E. Russell Schmidt Blvd.
Chesterfield Twp., MI



Total Acreage:	2.489
Total Available:	2.489
Frontage:	252'
Depth:	492'
Minimum Divisible:	
Zoned:	M-2 General Industrial
Sale Price:	\$195,000.00
Price Per SF:	\$1.80

Property Details

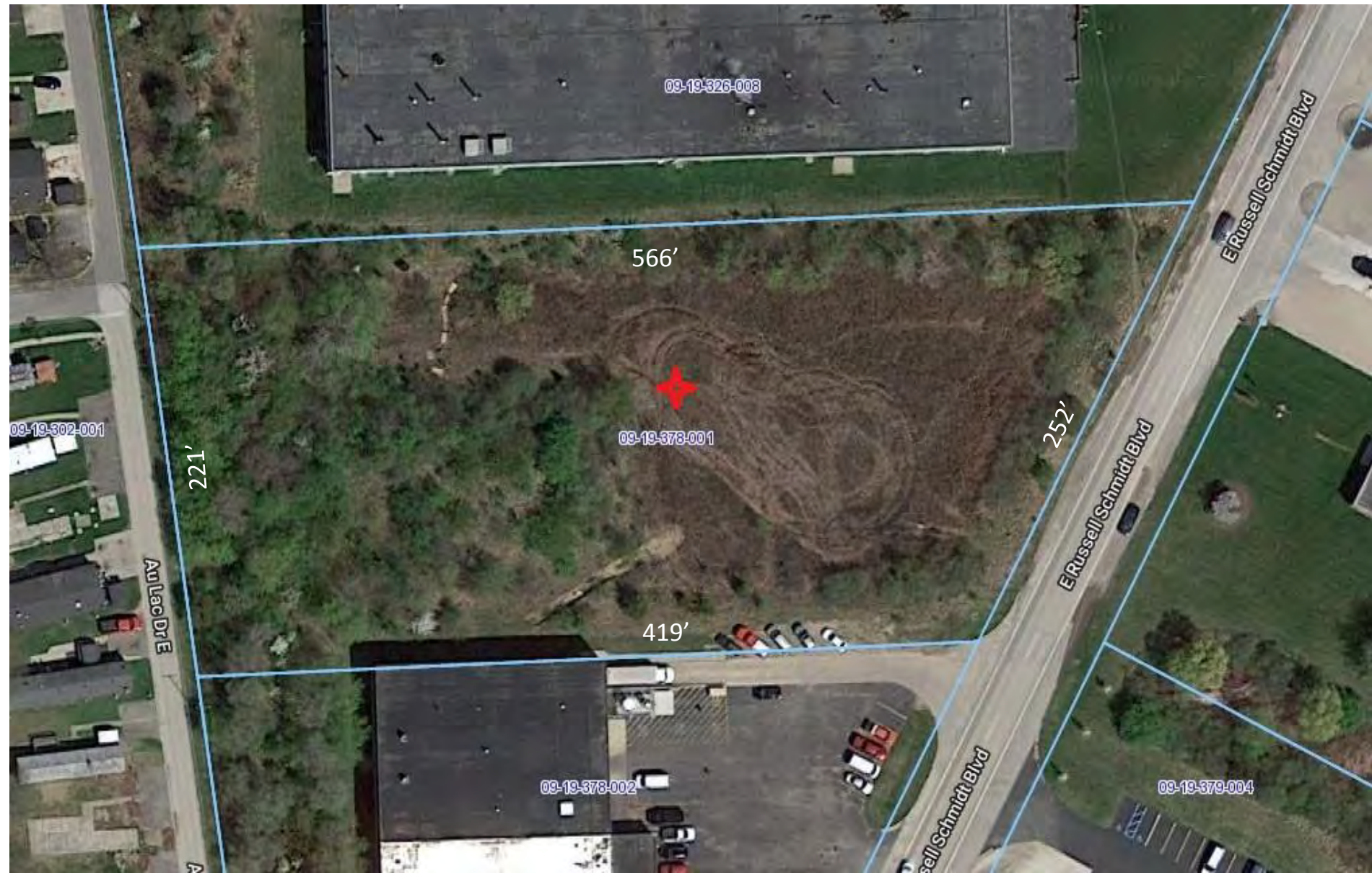
Intersection:	23 Mile Road / Gratiot Ave	Topography:
Water:	Yes	Easements:
Utilities:	Yes	Restrictions:
Sanitary:	Yes	Front Yard Setback:
Storm:		Side Yard Setback:
Soil:		

Additional Information:

In-fill lot. Established industrial park. Minutes to I-94.

Contact Information:

Bob Pagano
248.357.6576
bpagano@ngkf.com



09-19-326-008

566'

09-19-378-001

419'

09-19-378-002

252'

09-19-379-004

09-19-302-001

Au Lac Dr E

E Russell Schmidt Blvd

E Russell Schmidt Blvd

E Russell Schmidt Blvd