



**MACKINTOSH, Inc.**  
COMMERCIAL BROKERAGE

**Presents:**

## **The Glass Factory**

**241 E 4<sup>th</sup> Street, Frederick MD 21701**

**Condo for LEASE**  
**Suite 204A**  
**973 SF @ \$21 SF**



[Click Here for Video of Suite 204A](#)

**Beautifully Decorated Office Space in Historic Downtown Frederick.  
44,840 SF Building on 1.49 Acres (64,620 SF). DB Zoning.**

This East Street Location lies directly on the future main traffic corridor into the City of Frederick from a new Interstate 70 interchange.

Ideal Location for Professionals to Live near their Business.

One of only Five Cities or City Sections to receive a  
2005 Great American Main Street Award, bestowed annually by the  
National Trust for Historic Preservation.

Walking Distance from Downtown Restaurants.

Total of 61 Parking Spaces, 18 of which are currently assigned.

Recently Renovated with new HVAC and Roof.

The Building is located in the HUB zone, an area designated by the  
Federal Government whose Tenants are eligible for special  
consideration in obtaining government business.

---

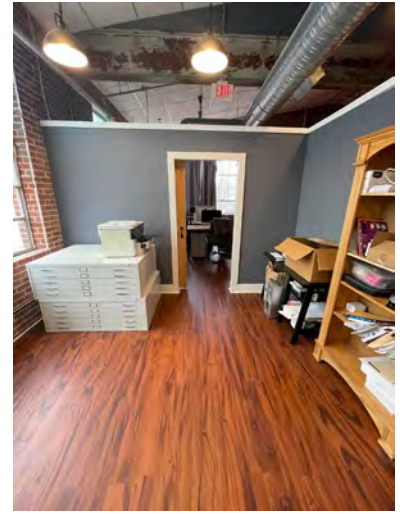
**For Additional Info call: Nancy Green (301)748-3321**

**Mackintosh Commercial Brokerage, 262 W. Patrick Street, Frederick, Maryland 21701**

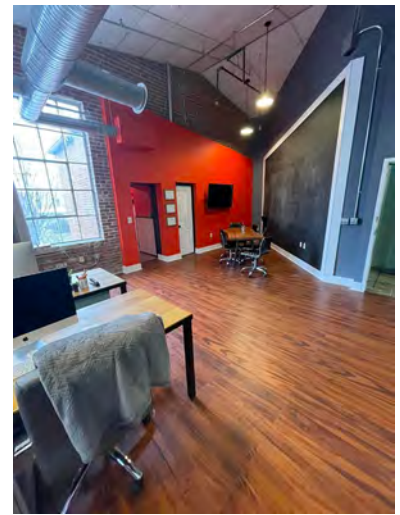
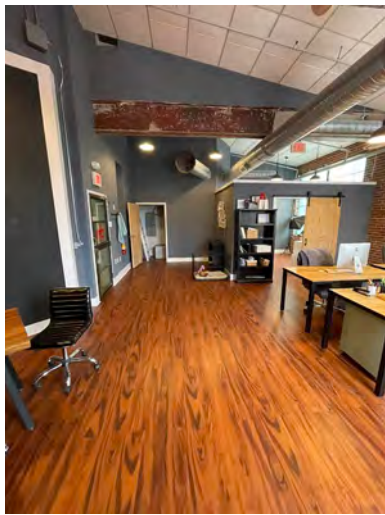
**Fax #: 301-846-4317 / O: 1-800-727-SOLD ext.235**

**Email: Nancy@ngreen.com / Website: www.ngreen.com**

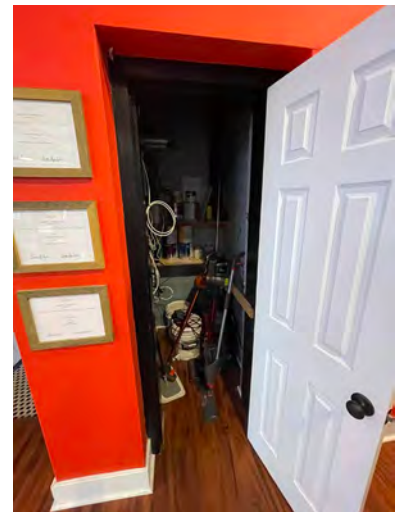
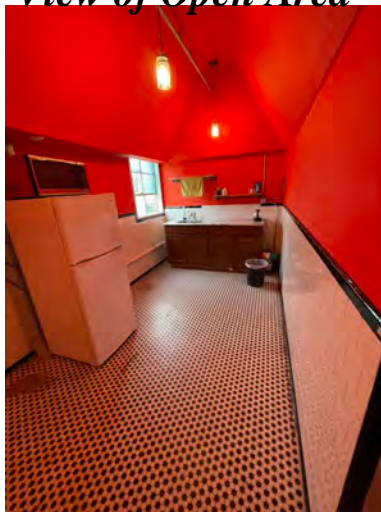
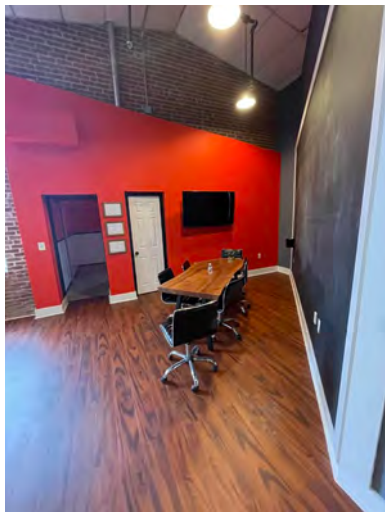
***All information deemed reliable but not guaranteed.***



*View of Conference Room / Office and Open Area*



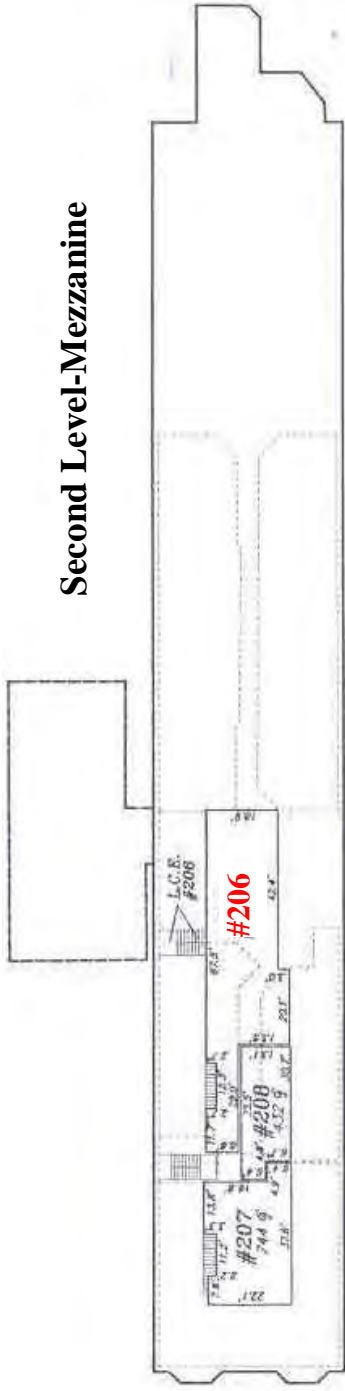
*View of Open Area*



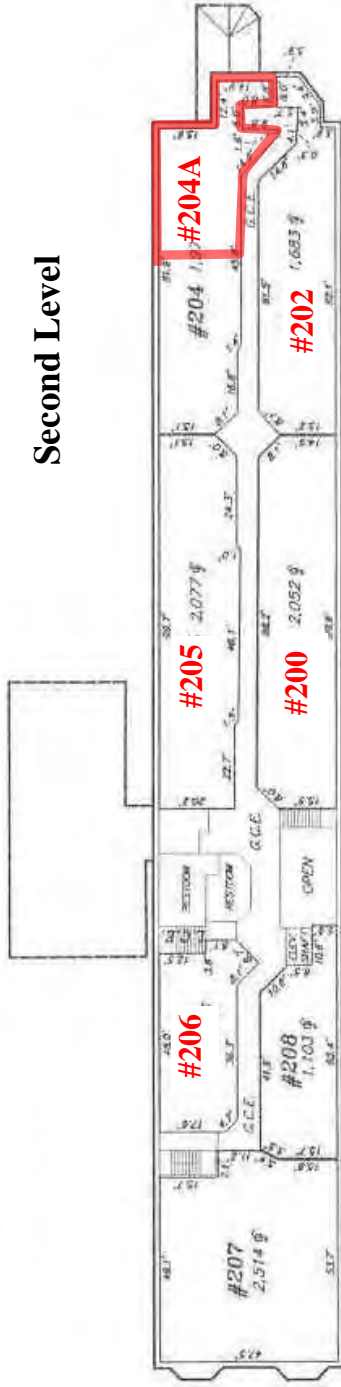
*View of Kitchen Area and Utility Closet*



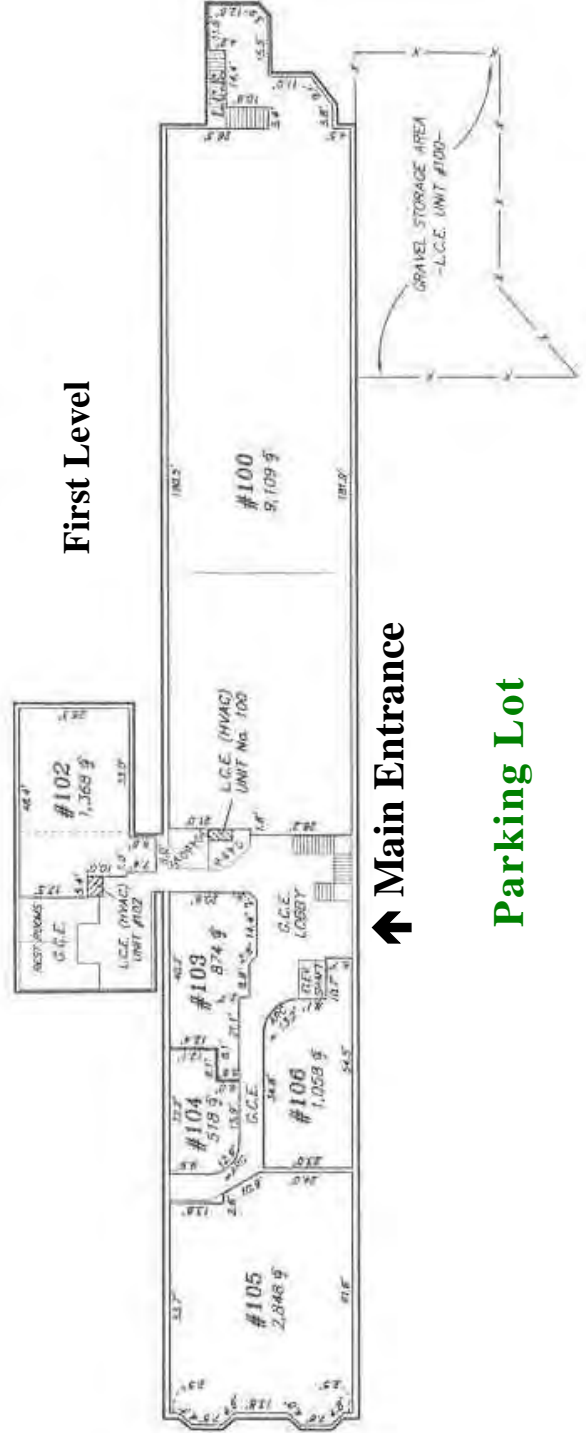
## Second Level-Mezzanine



## Second Level



## First Level



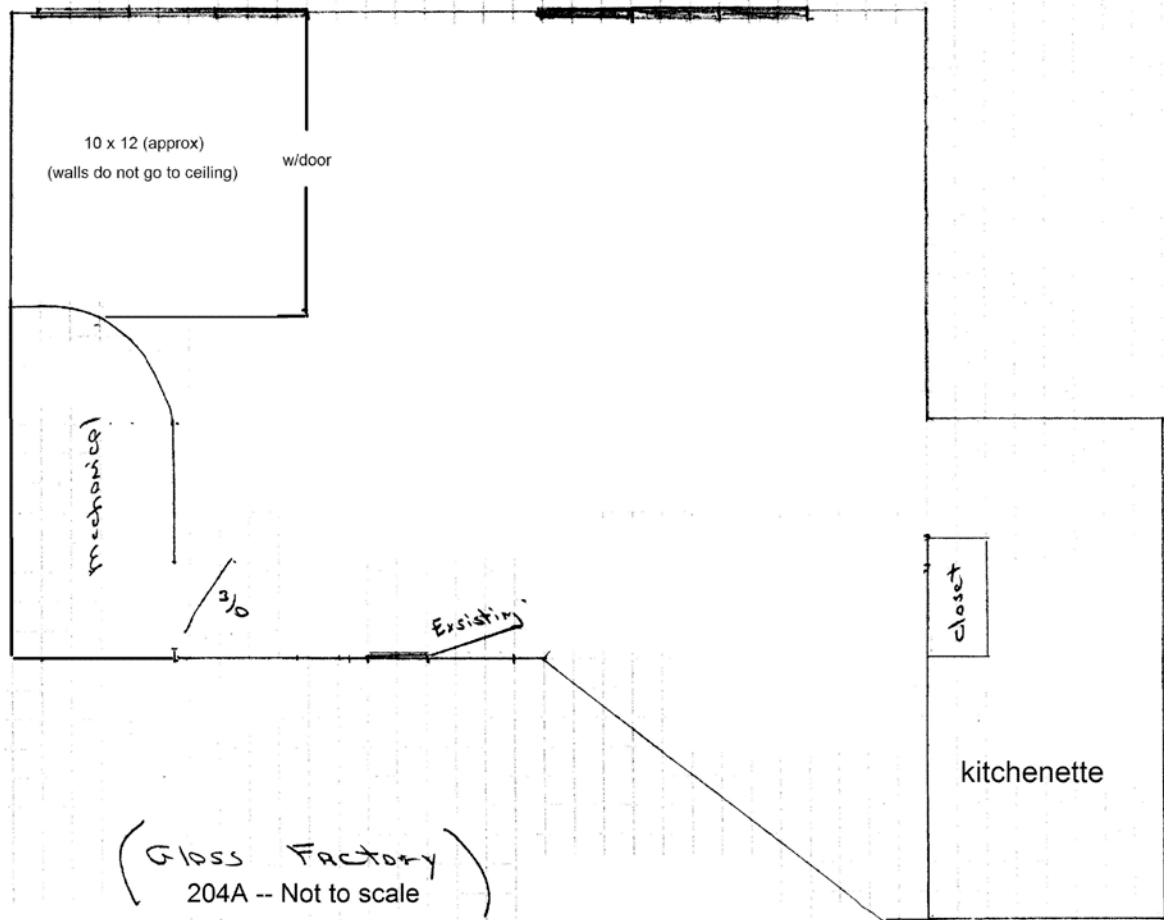
← East Fourth Street →

↑ Main Entrance

Parking Lot

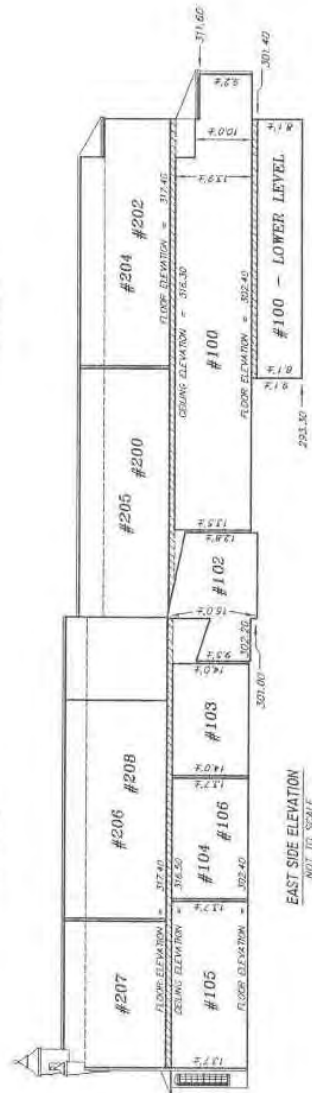
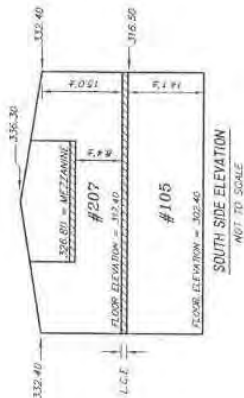
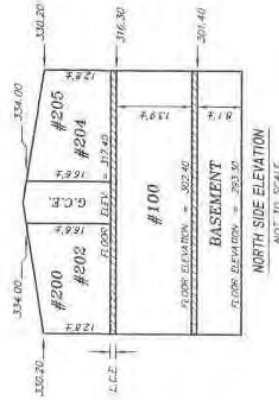
*All information deemed reliable, but not guaranteed.*

# Glass Factory – Suite 204A Layout



# CONDOMINIUM UNIT DESCRIPTION

UNIT NO.	STREET ADDRESS	LOWER ELEVATION	UPPER ELEVATION	TOTAL S. UNIT AREA
100	241 EAST FOURTH ST. - SUITE 100	291.30	316.30	34.191
102	241 EAST FOURTH ST. - SUITE 102	301.60	317.00	1.968
103	241 EAST FOURTH ST. - SUITE 103	302.40	316.50	8.74
104	241 EAST FOURTH ST. - SUITE 104	302.40	316.50	5.18
105	241 EAST FOURTH ST. - SUITE 105	302.40	316.50	2.848
106	241 EAST FOURTH ST. - SUITE 106	302.40	316.50	1.088
107	241 EAST FOURTH ST. - SUITE 107	302.40	316.50	2.848
108	241 EAST FOURTH ST. - SUITE 108	302.40	316.50	1.552
200	241 EAST FOURTH ST. - SUITE 200	317.40	334.00	1.974
202	241 EAST FOURTH ST. - SUITE 202	317.40	334.00	2.077
203	241 EAST FOURTH ST. - SUITE 203	317.40	334.00	2.575
204	241 EAST FOURTH ST. - SUITE 204	317.40	334.00	2.226
205	241 EAST FOURTH ST. - SUITE 205	317.40	334.00	1.515



NOTES:  
 1.) VERTICAL DATUM BASED ON CITY OF FREDERICK BENCHMARK AND LOCATED AT THE INTERSECTION OF THE CORNER OF THE LOWER CONCRETE STEP (ELEVATION = 301.43)  
 2.) DIMENSIONS SHOWN HEREON BASED ON EXISTING CONSTRUCTED UNIT.

OWNERS:  
 LYLE AND BONNIE ALEXANDERS  
 1811 UPTON STREET, NW  
 WASHINGTON, D.C. 20016  
 TEL. 202.238-2693

DATE: \_\_\_\_\_

PERSONS: \_\_\_\_\_

## CONDOMINIUM PLAT GLASS FACTORY

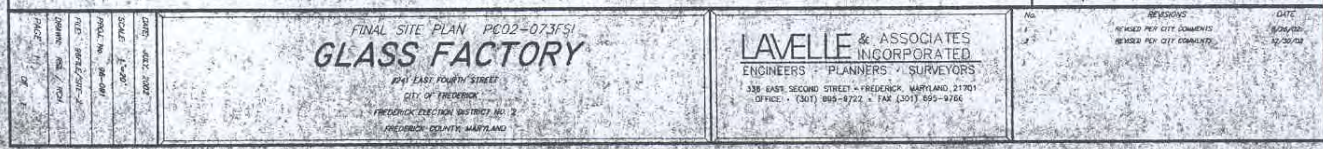
SITUATED AT 241 EAST FOURTH STREET  
 CITY OF FREDERICK, MARYLAND  
 FREDERICK ELECTION DISTRICT No. 2  
 FREDERICK COUNTY, MARYLAND

SCALE: AS NOTED. DECEMBER, 2005

LAND PLANNERS:  
 LAVELE & ASSOCIATES, INCORPORATED  
 SUPERVISORS  
 1572 TILDEN DRIVE, SUITE 1 - FREDERICK, MARYLAND 21704  
 OFFICE (301) 895-3922 FAX (301) 895-9788









# **The Glass Factory**

## **241 East Fourth Street, Frederick, Maryland 21701**

### **Demographic Detail Comparison Chart**

<b>Population Change</b>	<b>1-mi.</b>	<b>3-mi.</b>	<b>5-mi.</b>
Total Employees	15,158	53,338	64,769
Total Establishments	1,552	4,156	5,590
2006 Total Population	14,817	66,116	100,211
2006 Total Households	6,496	27,264	39,051
Population Change 1990-2006	994	21,418	37,263
Household Change 1990-2006	756	9,650	15,239
% Population Change 1990-2006	7.19%	47.92%	59.20%
% Household Change 1990-2006	13.17%	54.79%	64.00%
Population Change 2000-2006	593	7,321	12,651
Household Change 2000-2006	376	3,506	5,552
% Population Change 2000-2006	4.17%	12.45%	14.45%
% Households Change 2000-2006	6.14%	14.76%	16.57%

<b>Housing</b>	<b>1-mi.</b>	<b>3-mi.</b>	<b>5-mi.</b>
2000 Total Housing Units	6,636	25,032	35,116
2000 Occupied Housing Units	6,130	23,736	33,450
2000 Owner Occupied Housing Units	2,656	13,671	21,858
2000 Renter Occupied Housing Units	3,474	10,064	11,592
2000 Vacant Housing Units	506	1,297	1,665
% 2000 Occupied Housing Units	92.37%	94.82%	95.26%
% 2000 Owner Occupied Housing Units	40.02%	54.61%	62.25%
% 2000 Renter Occupied Housing Units	52.35%	40.20%	33.01%
% 2000 Vacant Housing Units	7.63%	5.18%	4.74%

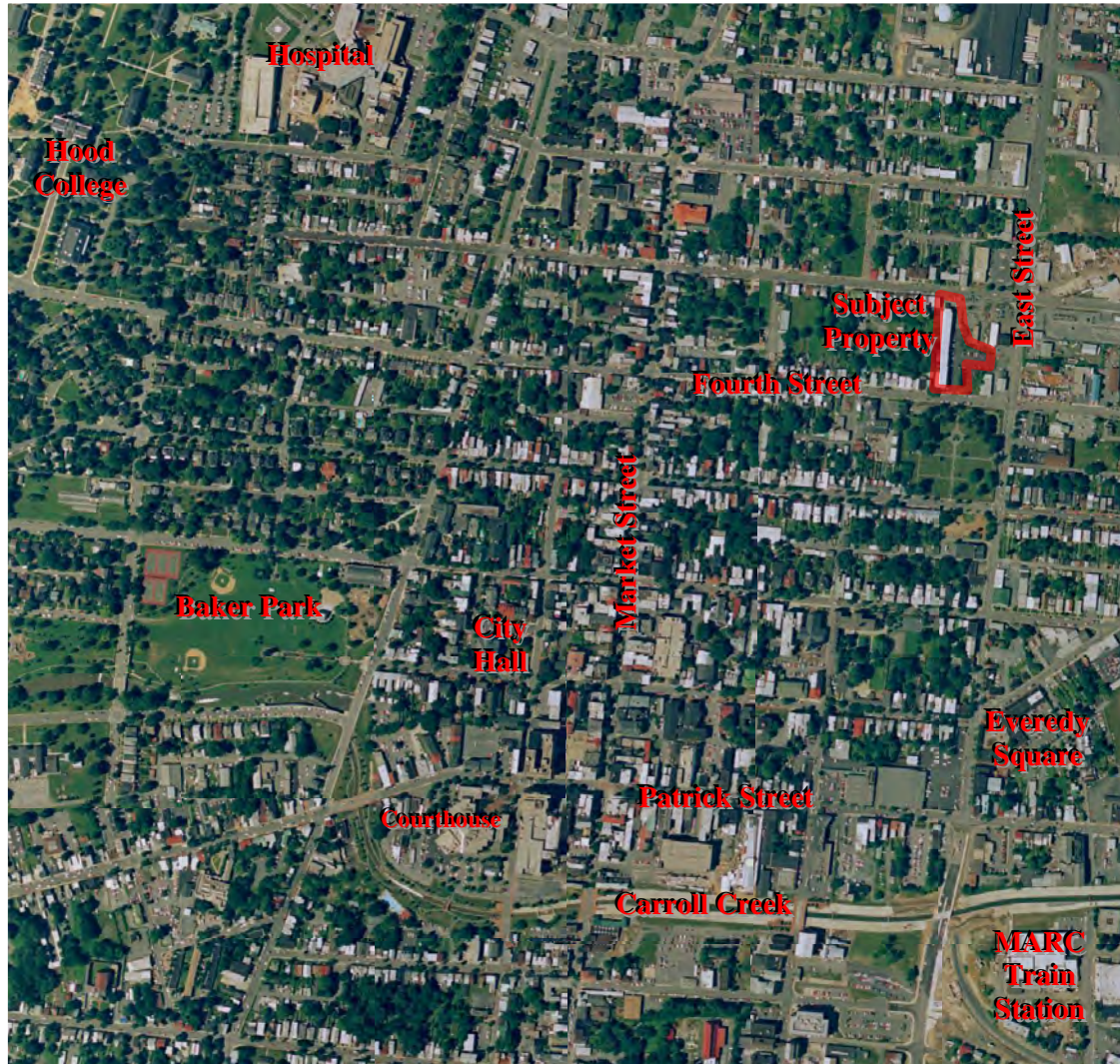
<b>Income</b>	<b>1-mi.</b>	<b>3-mi.</b>	<b>5-mi.</b>
2006 Median Household Income	\$43,899	\$54,261	\$59,900
2006 Per Capita Income	\$25,801	\$27,777	\$28,669
2006 Average Household Income	\$58,851	\$67,359	\$73,568

All Information Deemed Reliable, But Not Guaranteed.





**MACKINTOSH, Inc.**  
COMMERCIAL BROKERAGE



---

**For Additional Info call: Nancy Green (301)748-3321 / (800) 301-5901**

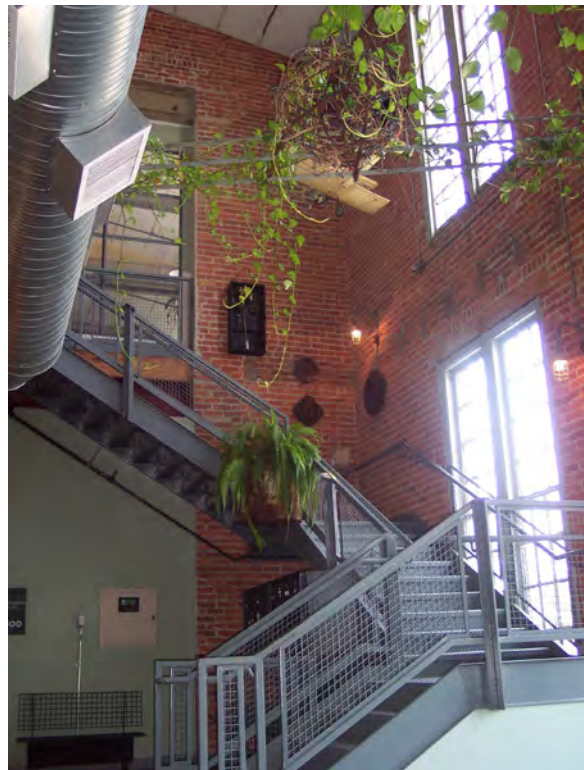
**Mackintosh Commercial Brokerage, 262 W. Patrick Street, Frederick, Maryland 21701**

Fax #: 301-846-4317 / O: 1-800-727-SOLD ext.235

Email: [Nancy@ngreen.com](mailto:Nancy@ngreen.com) / Website: [www.ngreen.com](http://www.ngreen.com)

All Information Deemed Reliable, But Not Guaranteed



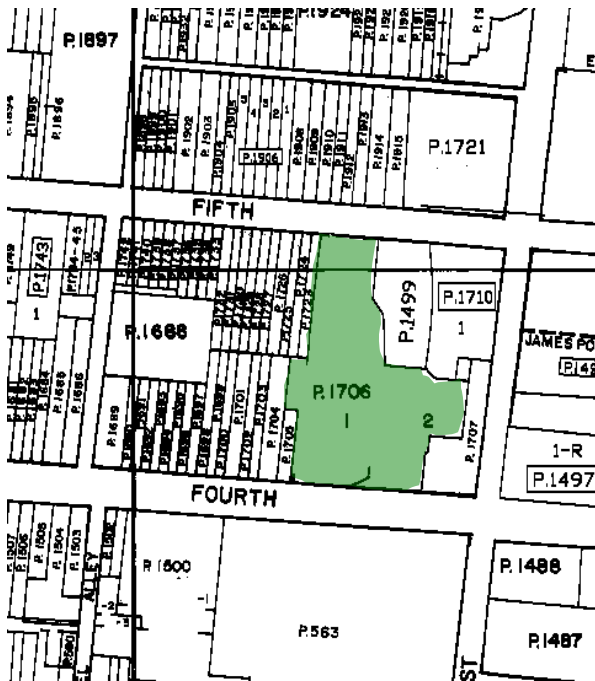


**Glass Factory Interior Photos**

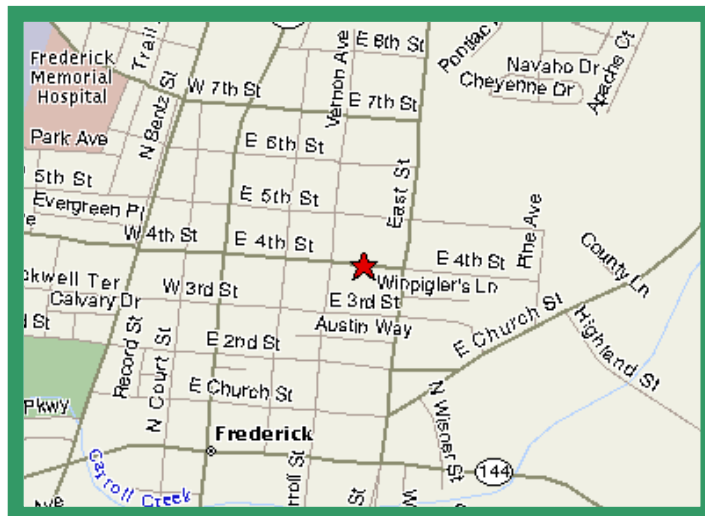




**MACKINTOSH, Inc.**  
COMMERCIAL BROKERAGE



**Directions:** From I 70 take Exit 56 (Patrick Street Exit), go straight on Patrick Street into Frederick about 1.5 miles, take a right onto East Street, go about 5 blocks, then take a left onto 4th Street, it is the second property on your right.



**For Additional Info call:**

**Nancy Green**  
**(301)748-3321**

**Mackintosh Commercial Brokerage**

262 W. Patrick Street

Frederick, Maryland 21701

O: 1-800-727-SOLD ext.235

Fax # : 301-846-4317

Email : [Nancy@ngreen.com](mailto:Nancy@ngreen.com)

*All information deemed reliable, but not guaranteed.*