

585


ARGYLE ROAD

CORNER OF NEWKIRK AVENUE
DITMAS PARK | BROOKLYN

COMMUNITY FACILITY FOR LEASE

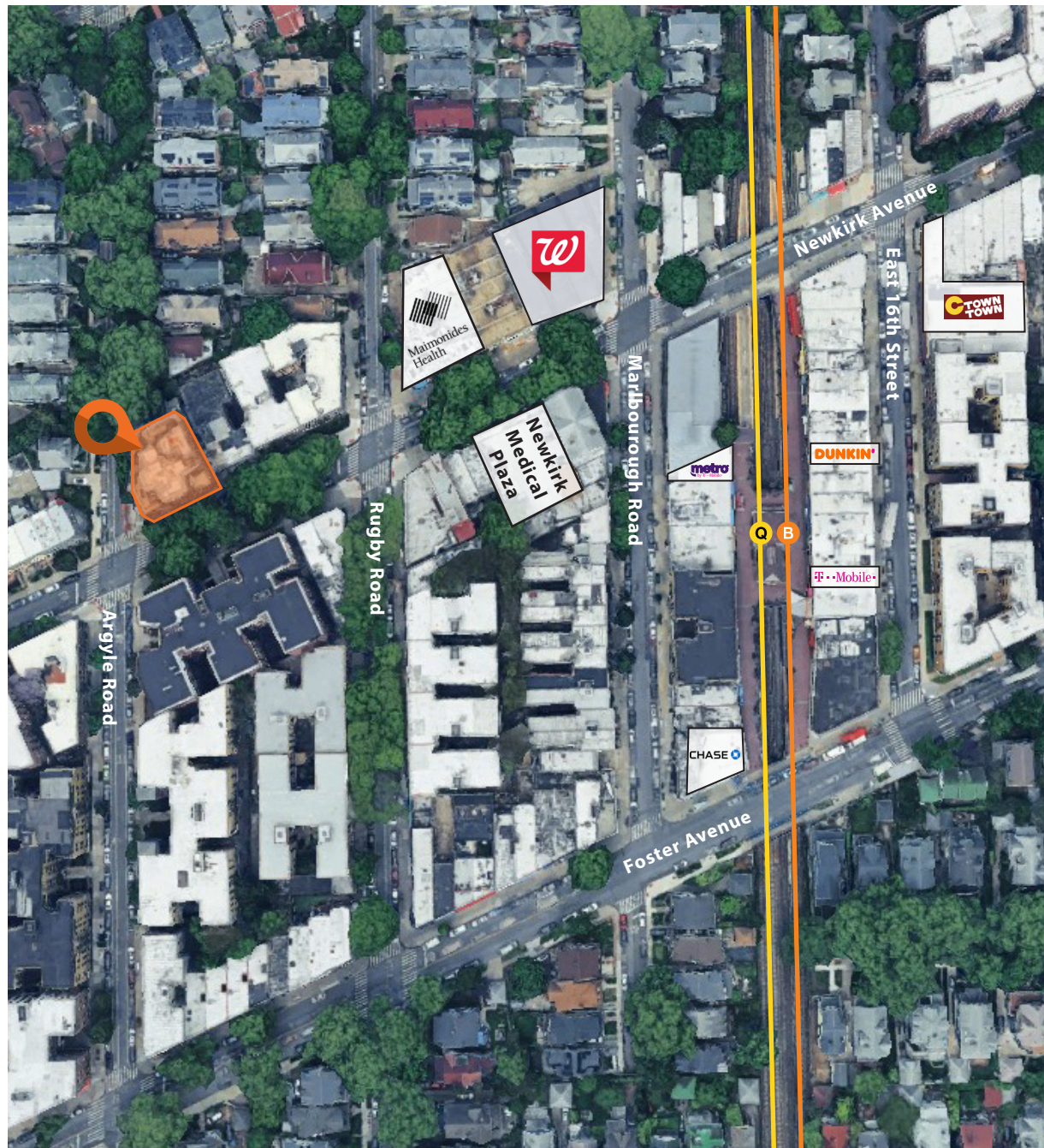


PROPERTY DETAILS

SIZE:	1,600 SF Ground Floor 4,900 SF Lower Level
FRONTAGE:	145' wraparound
CEILING HEIGHT:	11'
POSSESSION:	Immediate
TRANSPORTATION:	

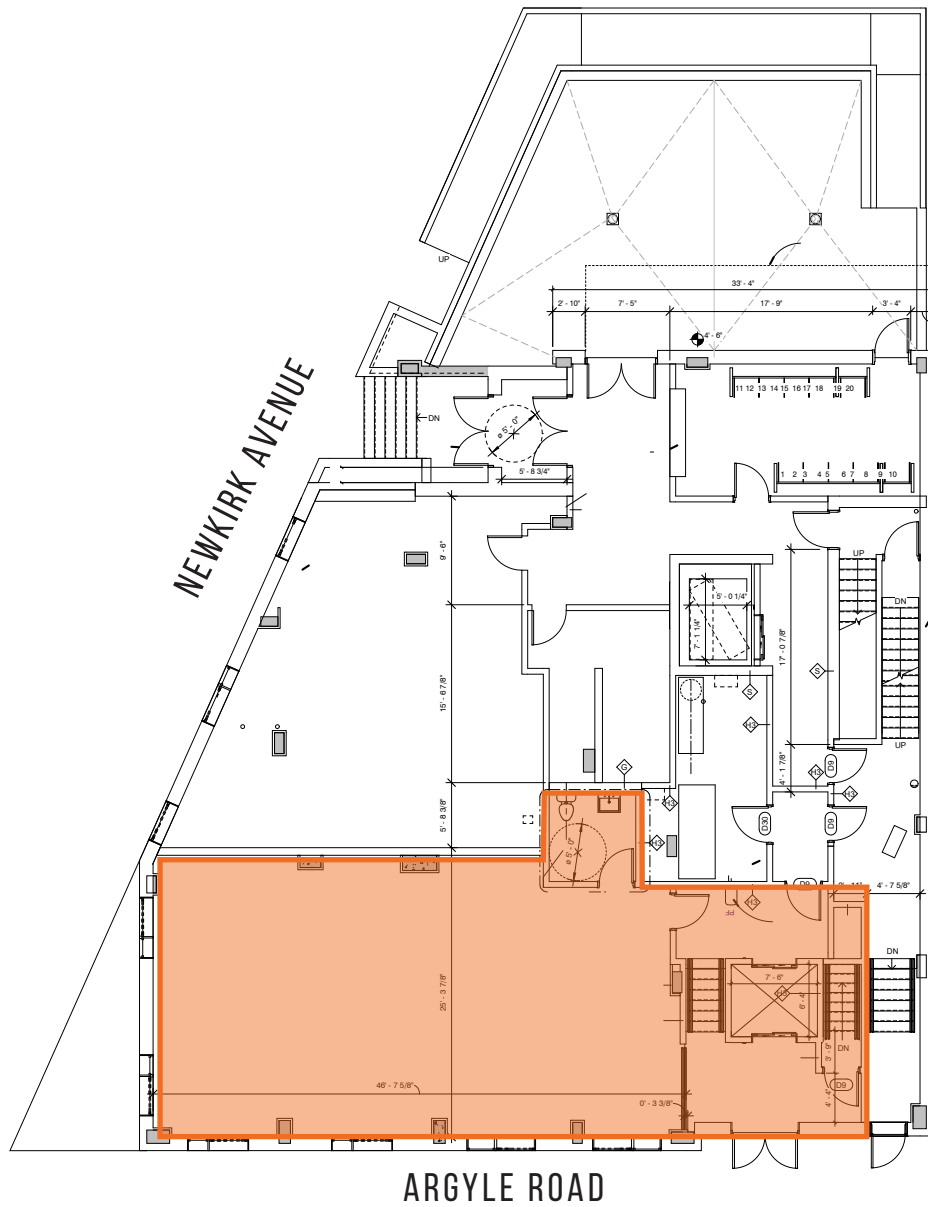
HIGHLIGHTS

- Community facility space
- New construction
- ADA accessible
- Elevator
- Multiple bathrooms
- High foot traffic area in dense residential neighborhood
- Steps away from Newkirk Plaza
- Neighboring tenants include:
Walgreens, T-Mobile, C-Town Supermarket, Dunkin', Chase Bank, & many more!

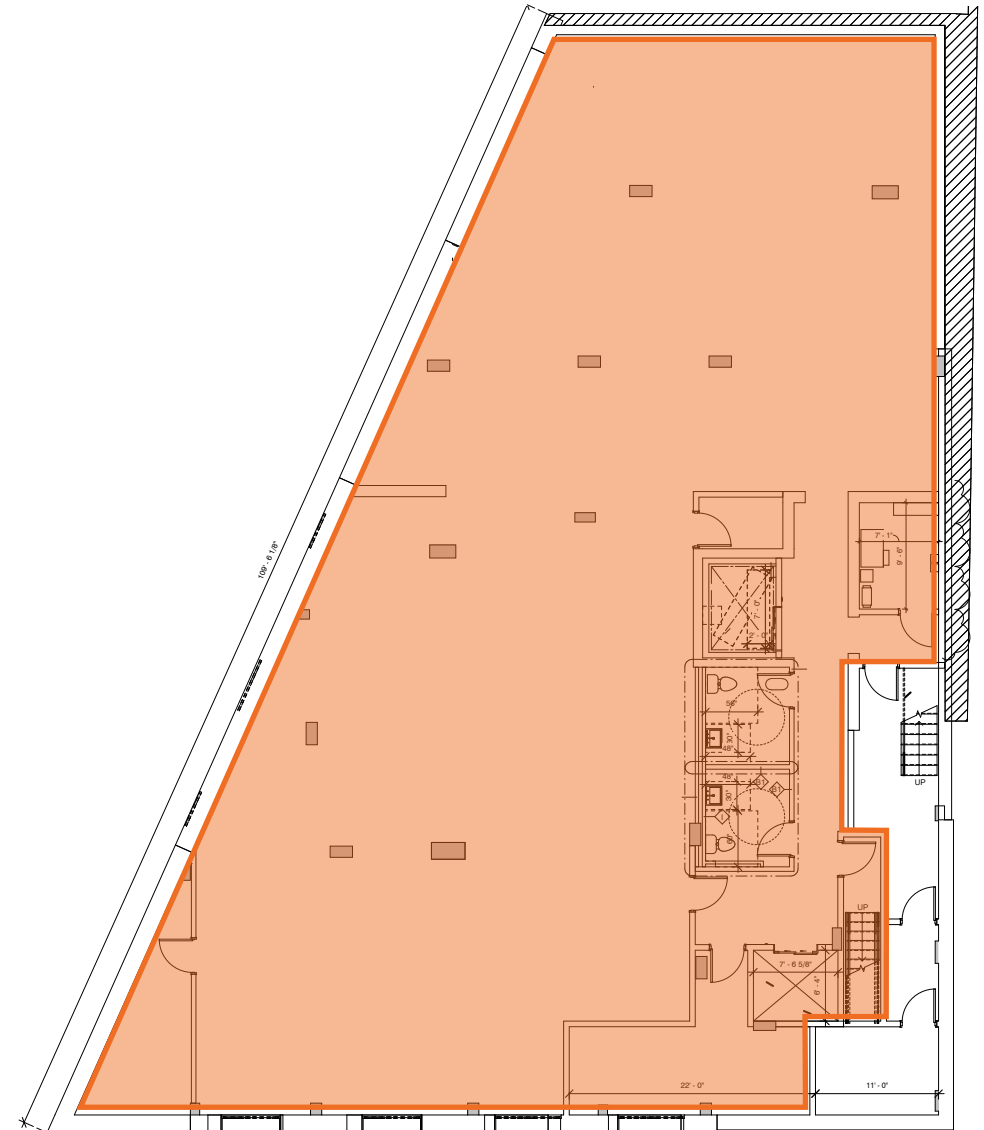


FLOOR PLANS:

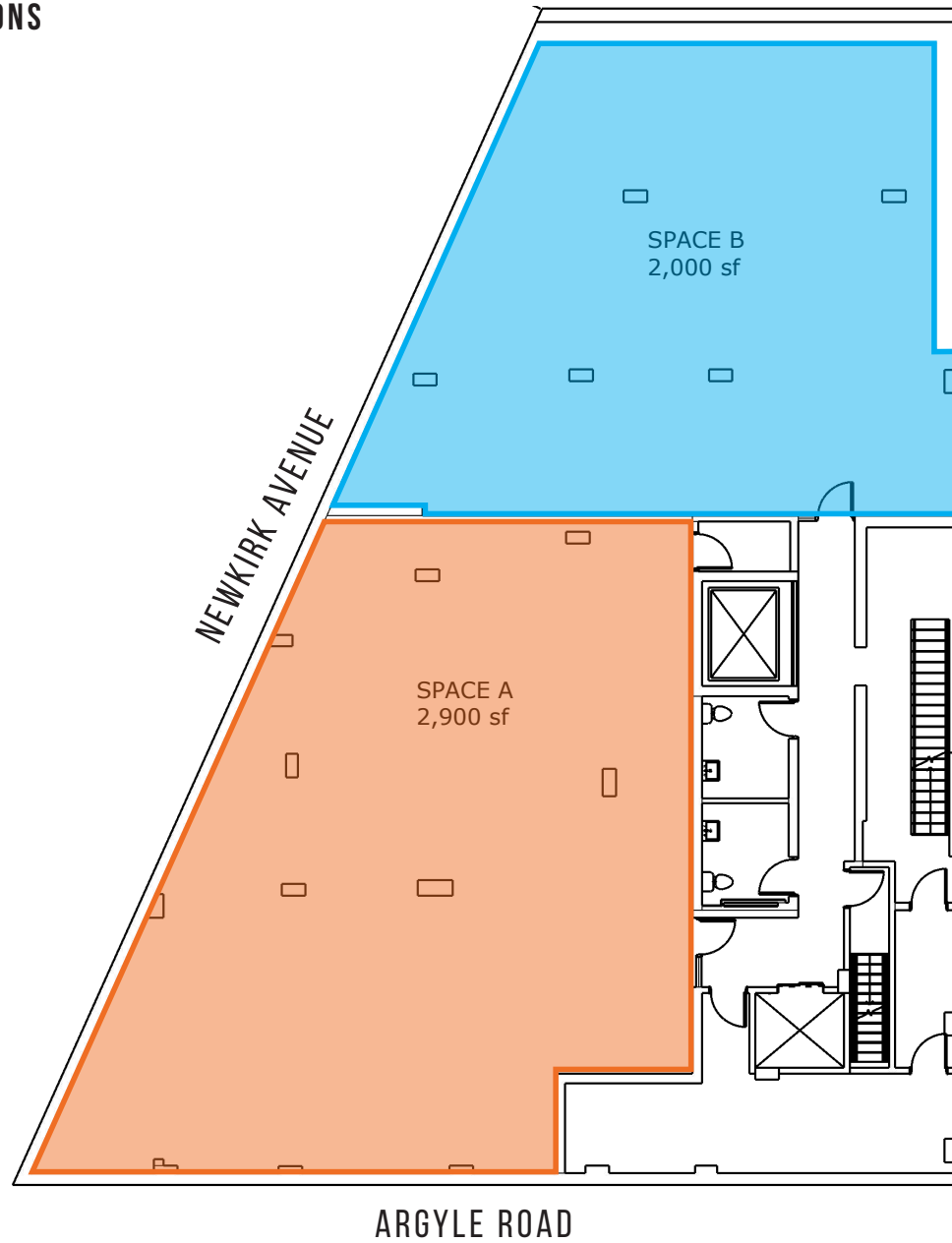
GROUND FLOOR - 1,600 SF



LOWER LEVEL -4,900 SF



FLOOR PLANS:
LOWER LEVEL - PROPOSED DIVISIONS



585

ARGYLE ROAD
CORNER OF NEWKIRK AVENUE
DITMAS PARK | BROOKLYN

FOR MORE INFORMATION,
PLEASE CONTACT:

ELI YADID

917.770.9173 | EYadid@ksrny.com

JORDAN SOLEIMANI

516.732.3697 | JSoleimani@ksrny.com

