

SYNERGY BUSINESS PARK SUBLEASE

9270 South Sandy Parkway Unit F | Sandy, UT 84070



SYNERGY BUSINESS PARK SUBLEASE

9270 South Sandy Parkway Unit F | Sandy, UT 84070



FOR SUBLEASE
\$1.25/SF NNN

Property Highlights

- Total Available: 1,612 SF
- Year Built: 2020
- Two (2) Restrooms
- Two (2) Drinking Fountains
- Three (3) Private Offices
- One (1) Breakroom W/ Kitchen
- One (1) Reception
- ESFR Fire Suppression System
- Central Heating & Air System in Office
- Zoning: ID (Industrial District)
- Access: Convenient Access Right Off of 9000 South Exit of I-15 Freeway
- Location: Located in the Centralized & Highly Desirable Sandy Submarket

Contact

SKYLER PETERSON, SIOR Executive Vice President m 801.656.7354 speterson@legendcommercial.com	TRE BOURDEAUX, SIOR Vice President m 801.824.0397 tbourdeaux@legendcommercial.com	PARKER TAGGART Senior Associate m 801.928.1815 ptaggart@legendcommercial.com	TANNER PULSIPHER Associate m 801.636.0255 tpulsipher@legendcommercial.com
--	---	--	---

LEGEND
PARTNERS
801.930.6750 | www.legendllp.com
2180 S 1300 E, Suite 240 | Salt Lake City, UT 84106

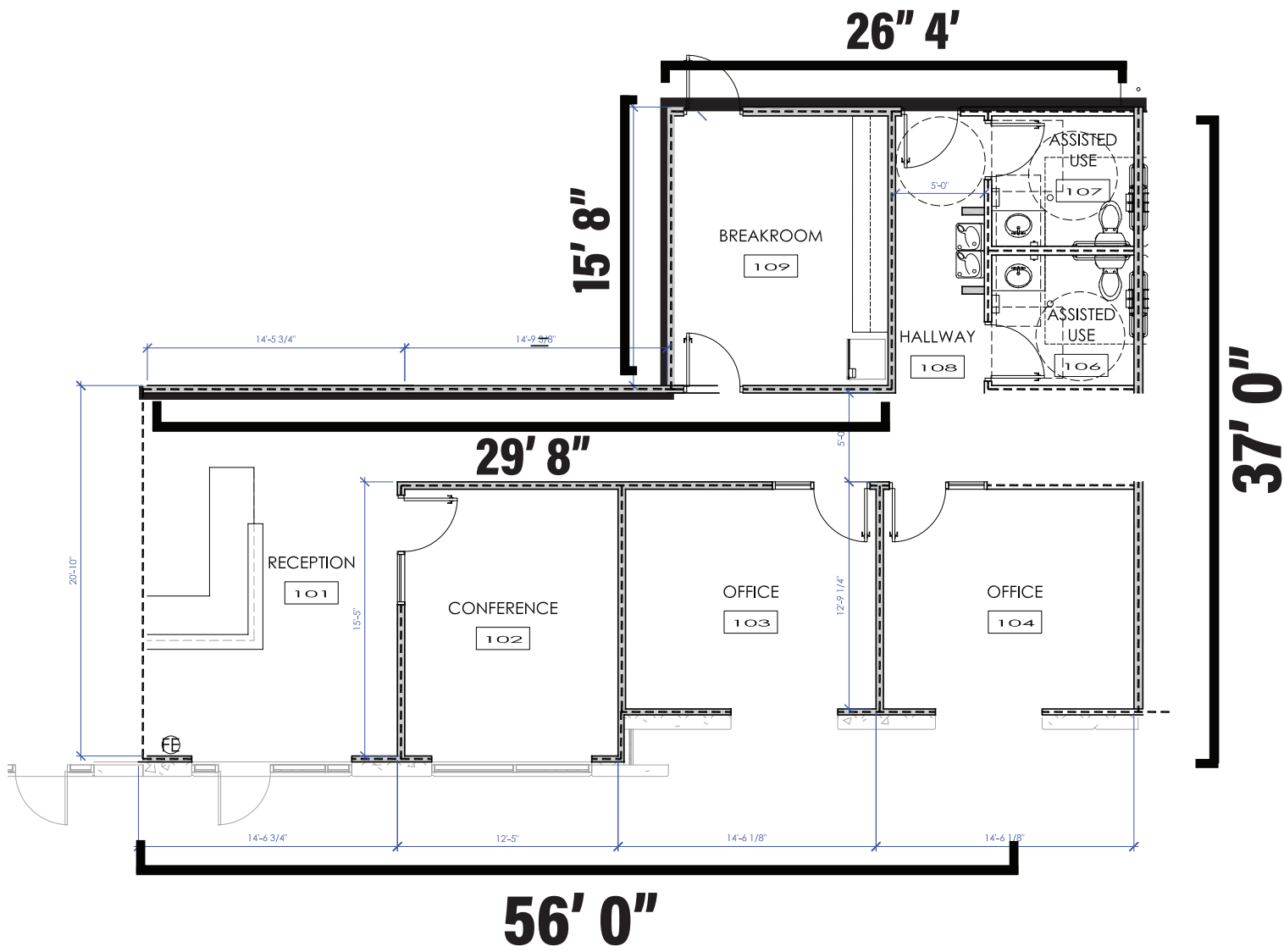
Contact

SKYLER PETERSON, SIOR Executive Vice President m 801.656.7354 speterson@legendcommercial.com	TRE BOURDEAUX, SIOR Vice President m 801.824.0397 tbourdeaux@legendcommercial.com	PARKER TAGGART Senior Associate m 801.928.1815 ptaggart@legendcommercial.com	TANNER PULSIPHER Associate m 801.636.0255 tpulsipher@legendcommercial.com
--	---	--	---

LEGEND
COMMERCIAL
801.930.6750 | www.legendcommercial.com
2180 S 1300 E, Suite 240 | Salt Lake City, UT 84106

SYNERGY BUSINESS PARK SUBLEASE

9270 South Sandy Parkway Unit F | Sandy, UT 84070



3

Private Offices

1,612 SF

Office

1

Break Room

2

Restrooms

2

Entrances

Contact

SKYLER PETERSON, SIOR

Executive Vice President

m 801.656.7354

speterson@legendcommercial.com

TRE BOURDEAUX, SIOR

Vice President

m 801.824.0397

tbourdeaux@legendcommercial.com

PARKER TAGGART

Senior Associate

m 801.928.1815

ptaggart@legendcommercial.com

TANNER PULSIPHER

Associate

m 801.636.0255

tpulsipher@legendcommercial.com

LEGEND

PARTNERS

801.930.6750 | www.legendllp.com

2180 S 1300 E, Suite 240 | Salt Lake City, UT 84106

Contact

SKYLER PETERSON, SIOR

Executive Vice President

m 801.656.7354

speterson@legendcommercial.com

TRE BOURDEAUX, SIOR

Vice President

m 801.824.0397

tbourdeaux@legendcommercial.com

PARKER TAGGART

Senior Associate

m 801.928.1815

ptaggart@legendcommercial.com

TANNER PULSIPHER

Associate

m 801.636.0255

tpulsipher@legendcommercial.com

LEGEND

COMMERCIAL

801.930.6750 | www.legendcommercial.com

2180 S 1300 E, Suite 240 | Salt Lake City, UT 84106

© Legend Partners, LLP. All rights reserved. All information contained herein is from sources deemed reliable; however, no representation or warranty is made to the accuracy thereof.

© Legend Partners, LLP. All rights reserved. All information contained herein is from sources deemed reliable; however, no representation or warranty is made to the accuracy thereof.