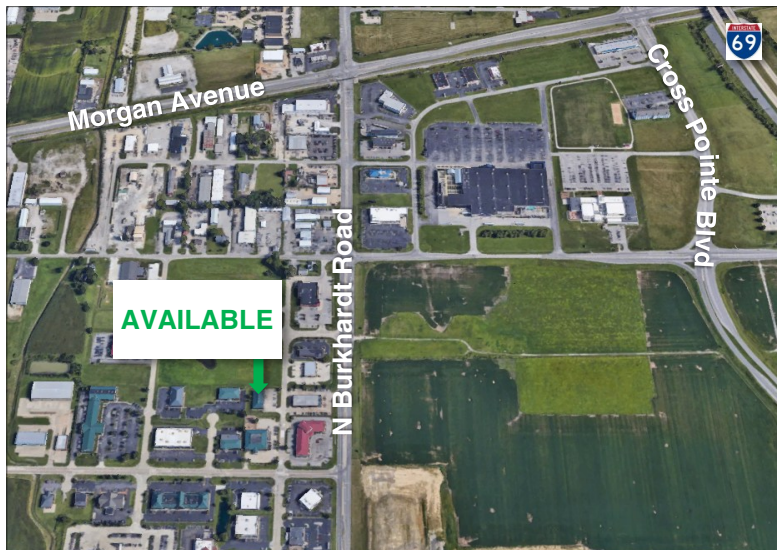


AVAILABLE

1310 Tutor Lane EVANSVILLE, IN 47715



- | | | | |
|------------------------|------------------|-------------------|------------------------|
| • Lease Price: | \$13 / SF / NNN | • Roof: | Metal |
| • Available SF: | 2,300 - 2,500 SF | • # of Restrooms: | 2 |
| • Lease Term: | 5 Years | • Water/Sewer: | City |
| • Year Built: | 1996 | • Current Use: | Vacant |
| • Zoning: | C-2 | • Showing: | Contact Listing Broker |
| • # of Parking Spaces: | 24 Shared | | |

Professional office space on Evansville's east side. This space is ready for a new professional office user to make it their own. The building is in the heart of the growing N Burkhardt Road area surrounded by retail and other professional businesses. Easy access and plenty of parking for clients.

For more information, contact:

Kyle Bernhardt, Broker

Direct: 812.455.7577 • Office: 812.473.6677 • KyleBernhardt@FCTuckerCommercial.com



812-473-6677 • FCTuckerCommercial.com

7820 EAGLE CREST BLVD., SUITE 200 • EVANSVILLE, IN 47715





1310 Tutor Lane
EVANSVILLE, IN 47715



7820 EAGLE CREST BLVD., SUITE 200 • EVANSVILLE, IN 47715

