



# Available For Lease

## Northwest Business Center

2100 Golf Road, Rolling Meadows, IL  
Flex spaces with renovated office and access to truck docks

Spaces Available

| Unit    | Size      | Office   |
|---------|-----------|----------|
| 100     | 5,382 SF  | 4,000 SF |
| 340     | 8,428 SF  | 4,000 SF |
| 350     | 5,378 SF  | 4,000 SF |
| 420     | 7,250 SF  | 3,500 SF |
| 490     | 11,300 SF | 6,000 SF |
| 420-490 | 18,550 SF | 9,500 SF |

Features

- Prestigious image
- Business campus setting
- Great location near full interchange at I-90/Arlington Heights Road and I-355 at Algonquin Road
- Ideal for sales, service, light assembly
- 4 per 1000 car parking
- All units have access to loading docks
- Drive-in doors
- Extensive Windowline
- Renovated space with new ceilings, lights, paint, floors
- Rental Rate: STO
- Real Estate Taxes: \$4.25 SF (2024)
- Operating Expense: \$2.00 SF (2024)

Contact us:

Kelly Joyce

+1 847 698 8276

kelly.joyce@colliers.com



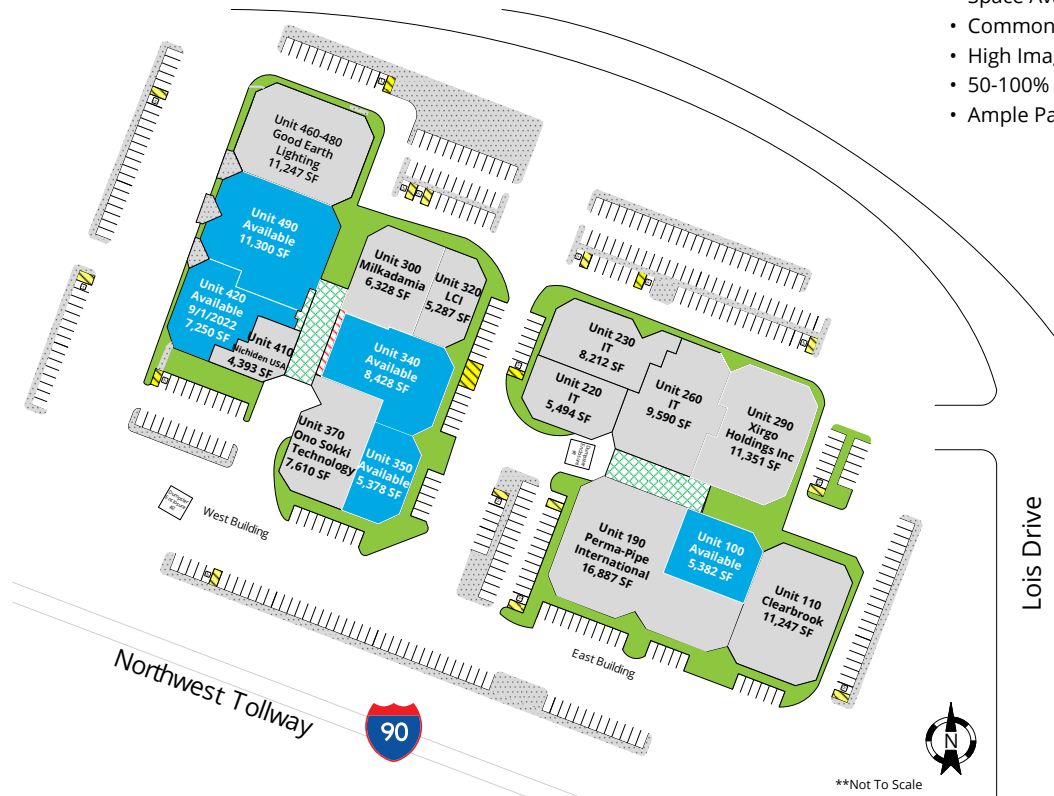
Colliers

6250 N. River Rd. | Suite 11-100  
Rosemont, IL 60018  
www.colliers.com/chicago

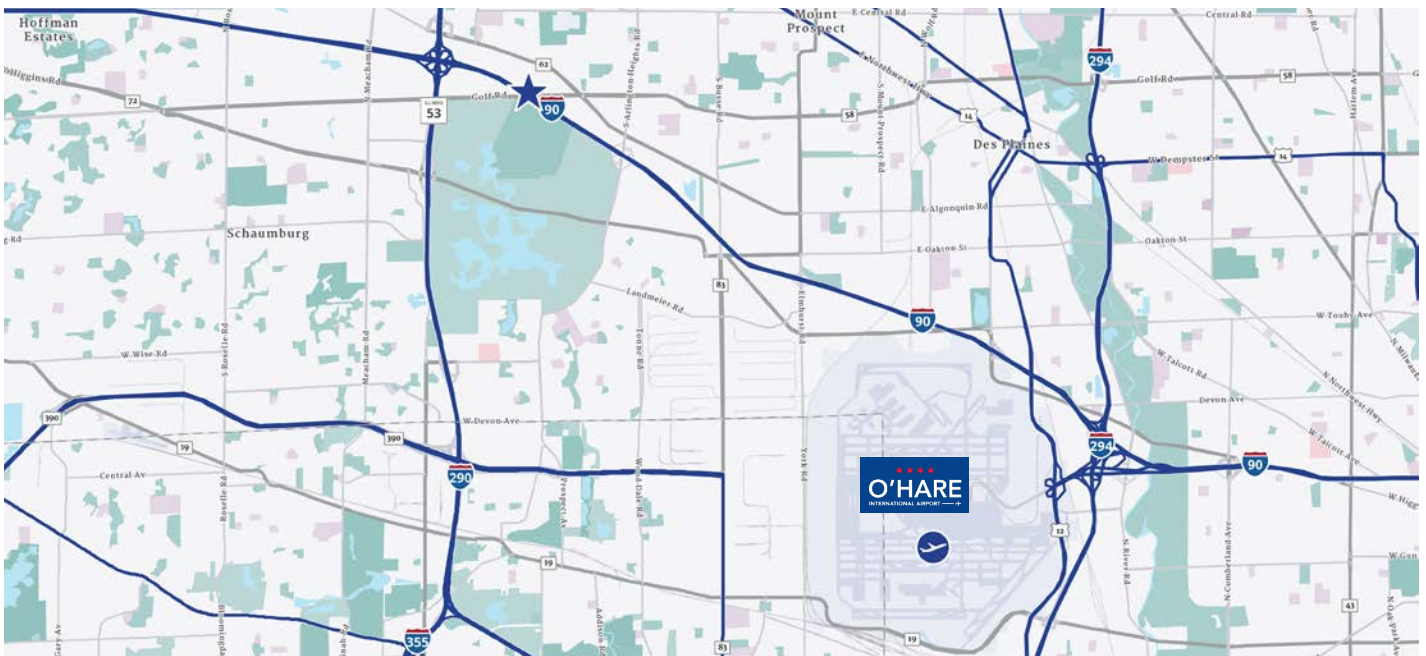
This document has been prepared by Colliers for advertising and general information only. Colliers makes no guarantees, representations or warranties of any kind, expressed or implied, regarding the information including, but not limited to, warranties of content, accuracy and reliability. Any interested party should undertake their own inquiries as to the accuracy of the information. Colliers excludes unequivocally all inferred or implied terms, conditions and warranties arising out of this document and excludes all liability for loss and damages arising there from. This publication is the copyrighted property of Colliers and/or its licensor(s).

## 2100 Golf Road, Rolling Meadows, IL

- Space Available: 5,382 to 18,549 SF
- Common Truck Level Docks
- High Image
- 50-100% Office
- Ample Parking

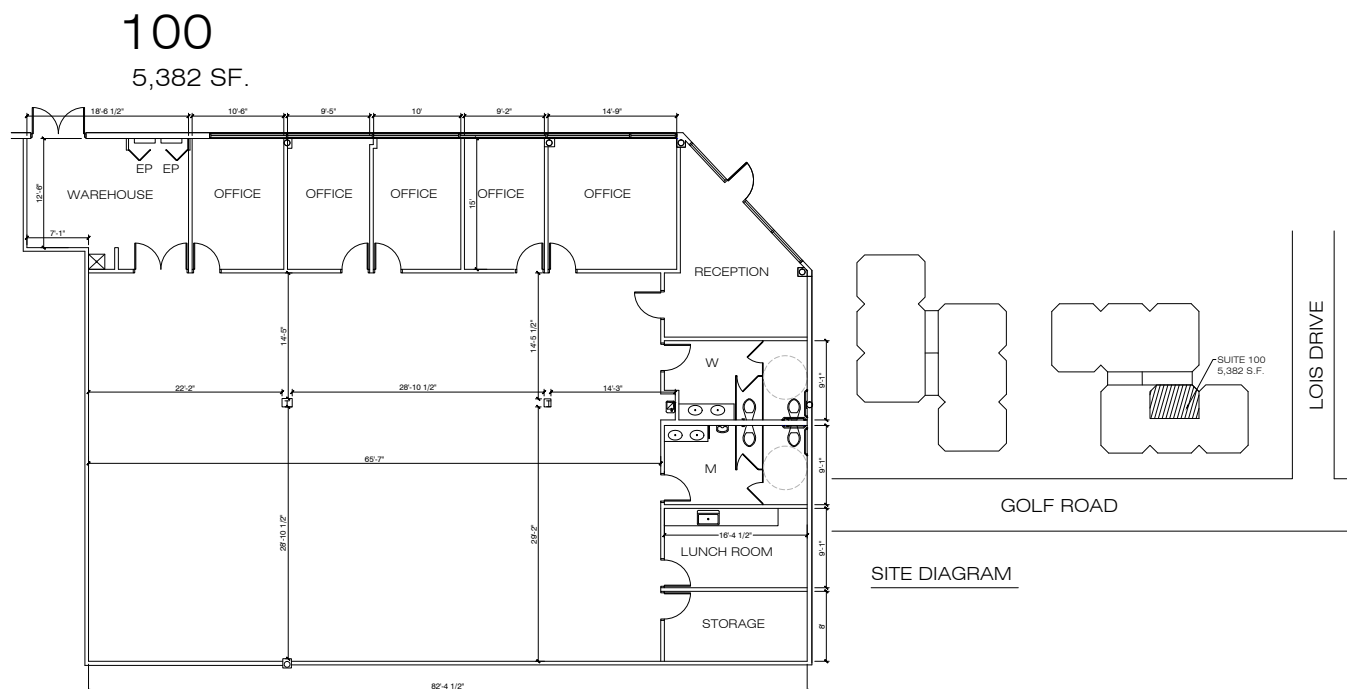


Contact:  
Kelly M. Joyce  
847 698 8276

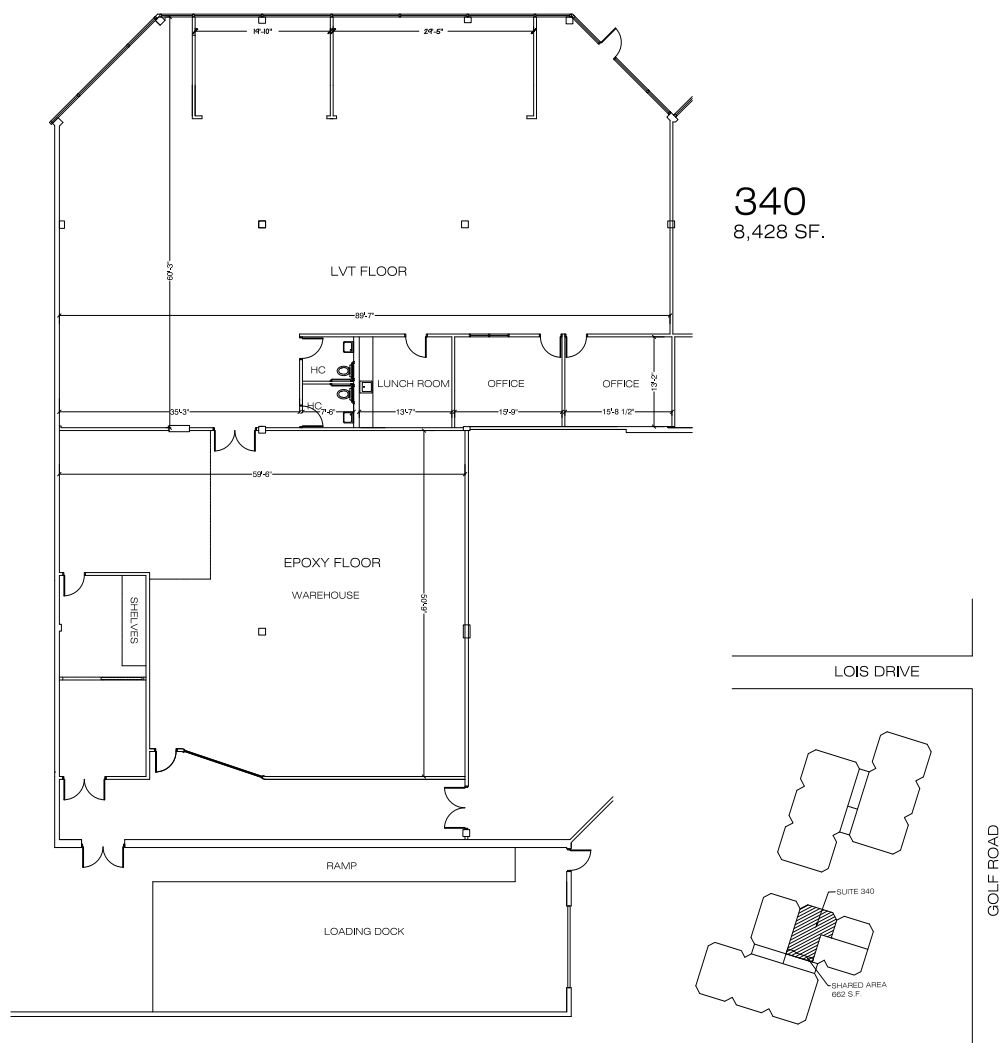


**Kelly Joyce**  
+1 847 698 8276  
kelly.joyce@colliers.com

## 2100 Golf Road, Suite 100, Rolling Meadows, IL

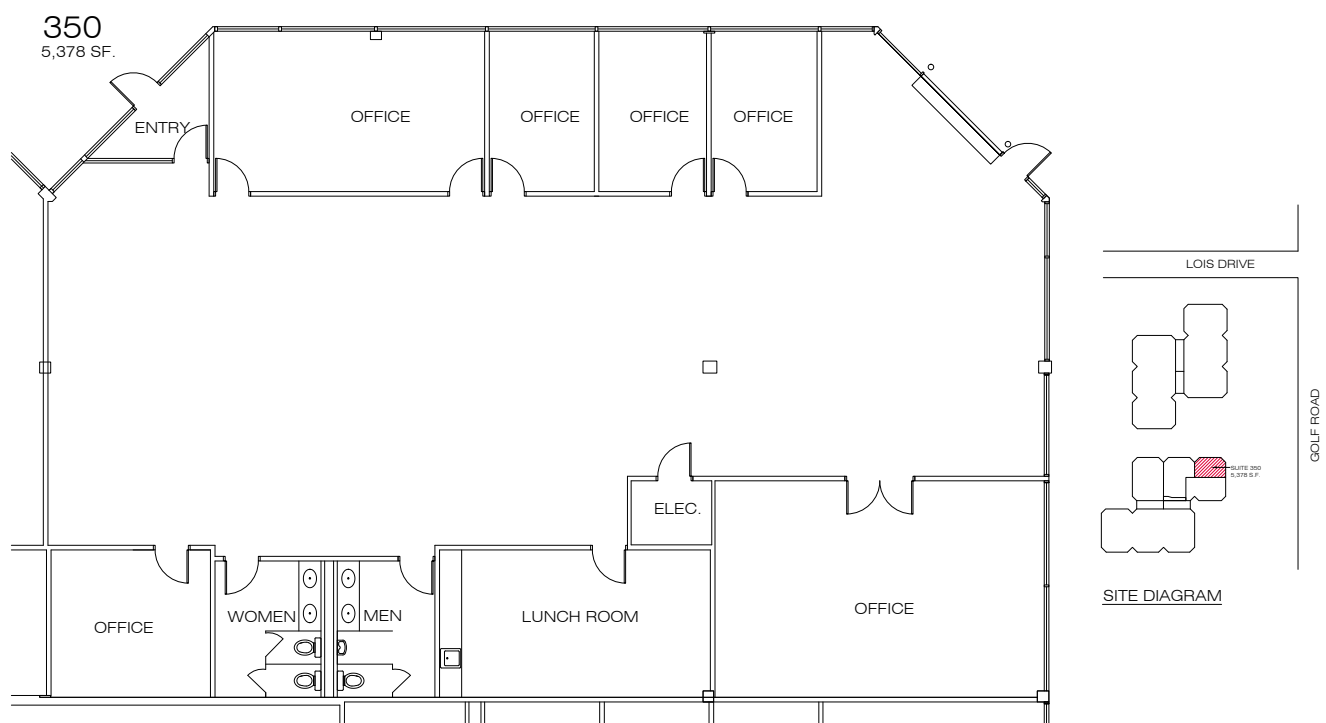


## 2100 Golf Road, Suite 340, Rolling Meadows, IL



**Kelly Joyce**  
+1 847 698 8276  
kelly.joyce@colliers.com

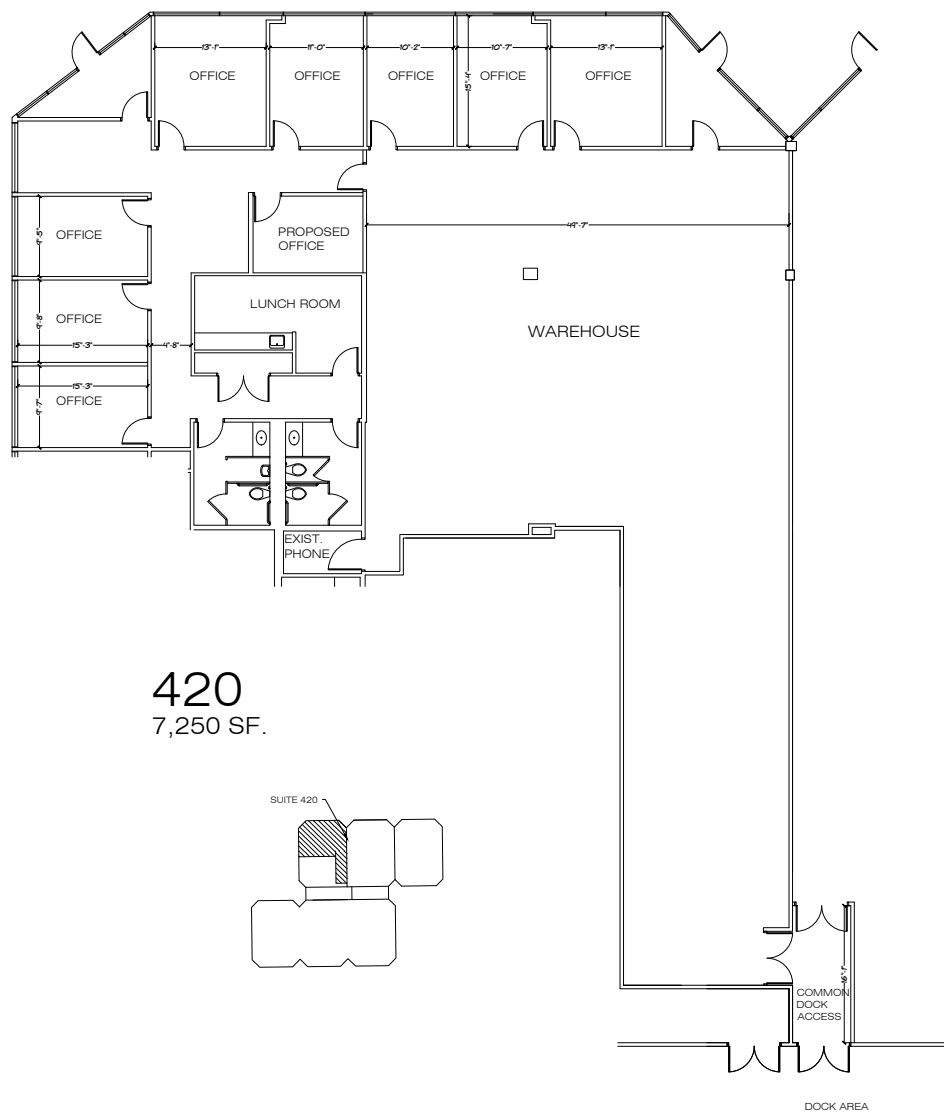
## 2100 Golf Road, Suite 350, Rolling Meadows, IL



**Kelly Joyce**  
+1 847 698 8276  
kelly.joyce@colliers.com



## 2100 Golf Road, Suite 420, Rolling Meadows, IL

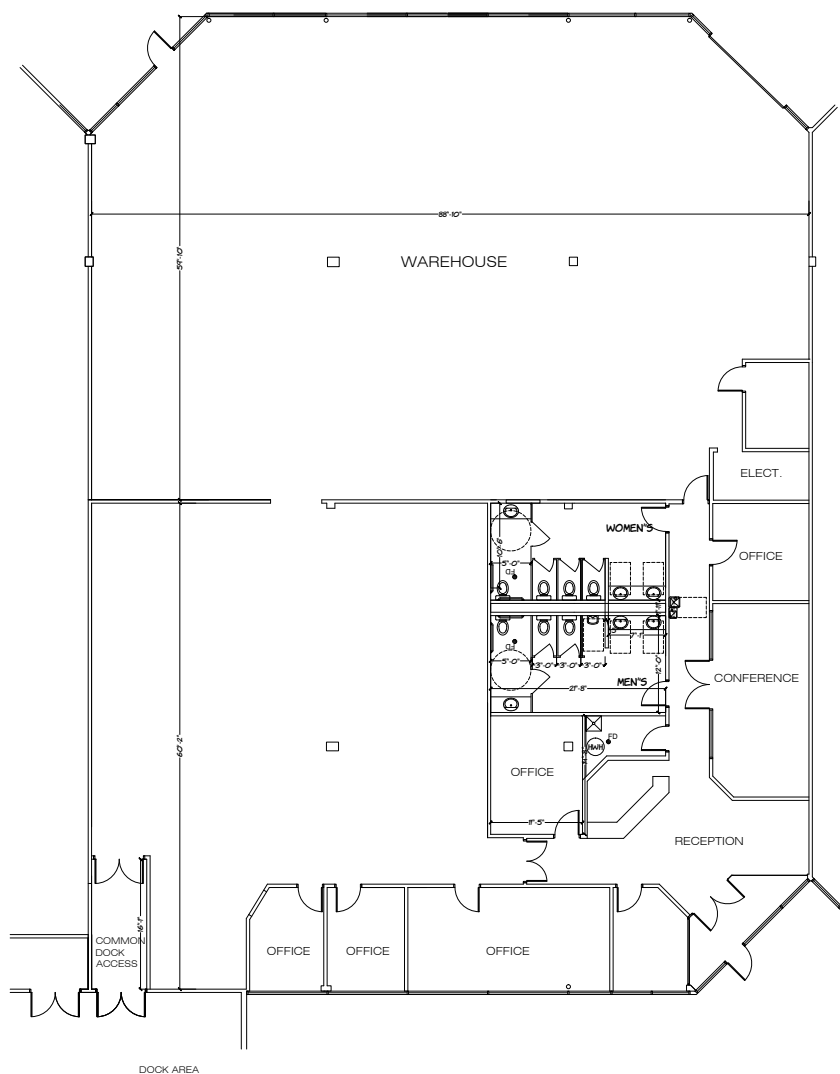


**420**  
7,250 SF.

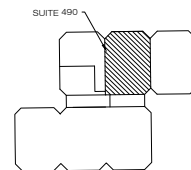


**Kelly Joyce**  
+1 847 698 8276  
kelly.joyce@colliers.com

## 2100 Golf Road, Suite 490, Rolling Meadows, IL



**490**  
11,300 SF.



**Kelly Joyce**  
+1 847 698 8276  
kelly.joyce@colliers.com