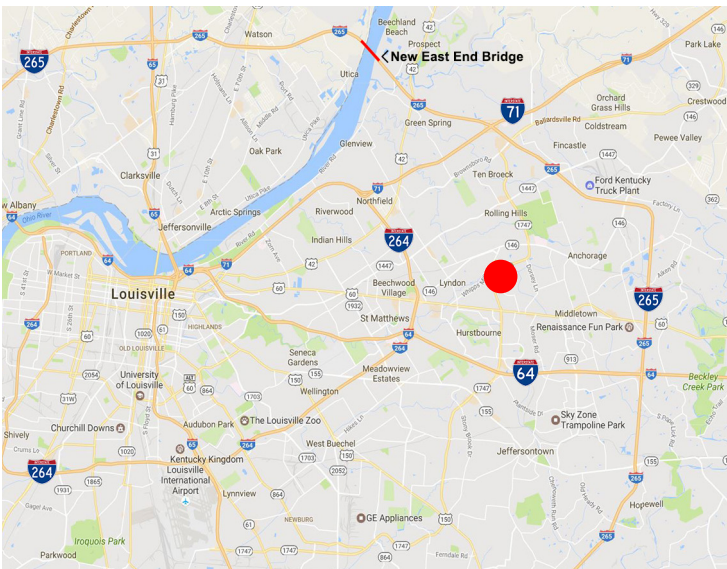


OFFICE SPACE FOR LEASE
PLAZA II AT HURSTBOURNE GREEN
9510 ORMSBY STATION ROAD
Louisville, KY 40223



Location

Located at Corner of North Hurstbourne Parkway and Ormsby Station Road

Highlights

- First floor suite available in Class A office building in Hurstbourne Green Business Park.
- Highly visible from busy Hurstbourne Parkway with building signage available for large users.
- Ample parking with 4.5 parking spaces per 1,000 SF
- New Conference Center planned that can be reserved by any tenant.
- Adjacent to Northeast YMCA and across from the Shoppes at Forest Green.

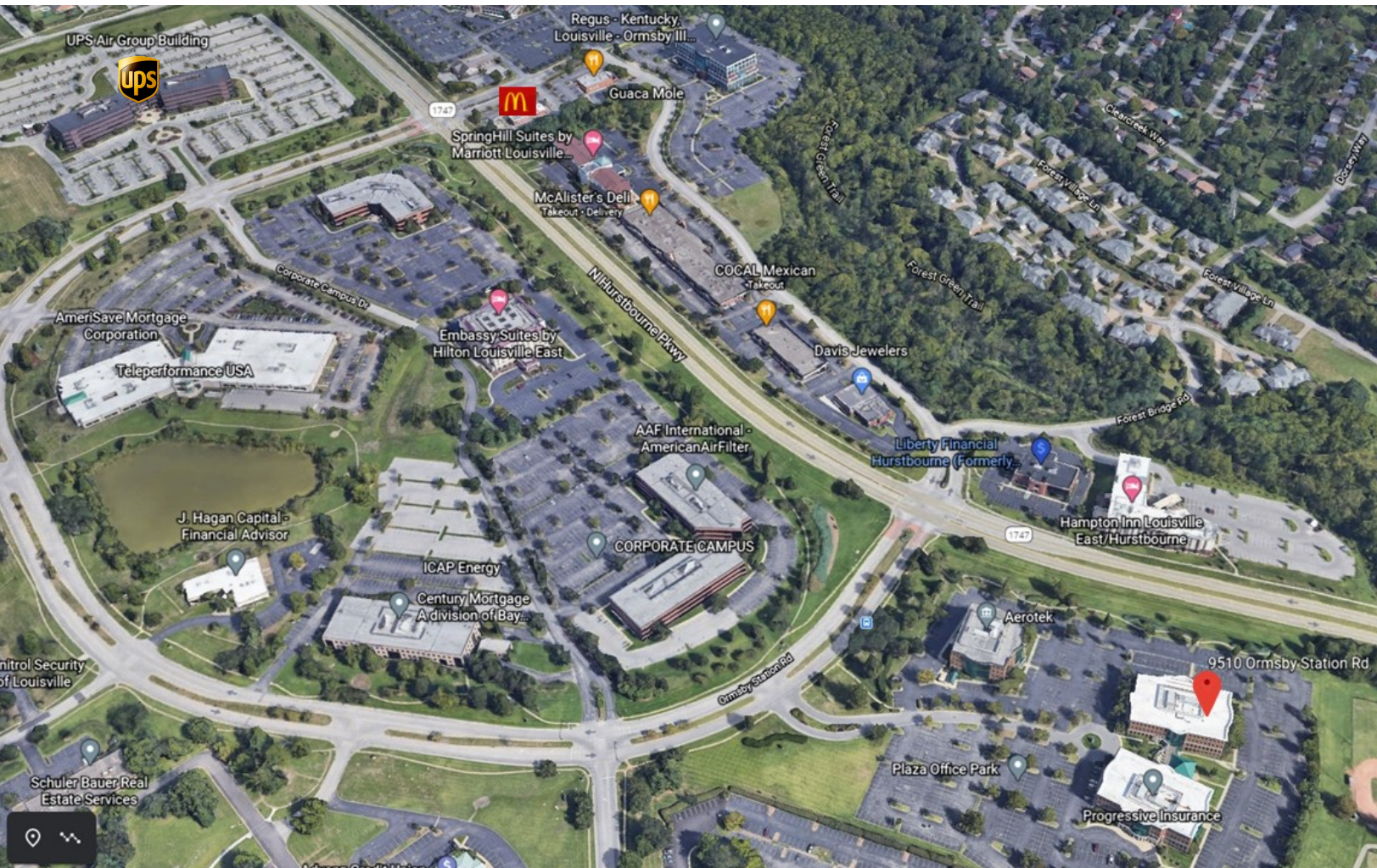
Contact	Mike DeHart mdehart@hcrky.com	Tim Gramig, CCIM tgramig@hcrky.com	502.253.1200 ww.hcrky.com	12451 Plantside Drive Louisville, KY 42099
----------------	---	--	------------------------------	---

DISCLAIMER: We obtained the information contained herein from sources we believe to be reliable, but have not verified its accuracy. Accordingly, no warranty or representation, express or implied, is made as to the accuracy of such information, and it is submitted subject to errors, omissions, change of price, rental or other conditions, withdrawal without notice, and to any specific listing conditions imposed by the owners. As always, you are encouraged to conduct your own investigation in conjunction with your tax, legal and other advisors.

OFFICE SPACE FOR LEASE
PLAZA II AT HURSTBOURNE GREEN
9510 ORMSBY STATION ROAD
Louisville, KY 40223



Aerial



Contact

Mike DeHart
mdehart@hcrky.com

Tim Gramig, CCIM
tgramig@hcrky.com

502.253.1200
ww.hcrky.com

12451 Plantside Drive
Louisville, KY 42099

DISCLAIMER: We obtained the information contained herein from sources we believe to be reliable, but have not verified its accuracy. Accordingly, no warranty or representation, express or implied, is made as to the accuracy of such information, and it is submitted subject to errors, omissions, change of price, rental or other conditions, withdrawal without notice, and to any specific listing conditions imposed by the owners. As always, you are encouraged to conduct your own investigation in conjunction with your tax, legal and other advisors.

OFFICE SPACE FOR LEASE
PLAZA II AT HURSTBOURNE GREEN
9510 ORMSBY STATION ROAD
Louisville, KY 40223



Property Photos



Contact

Mike DeHart
mdehart@hcrky.com

Tim Gramig, CCIM
tgramig@hcrky.com

502.253.1200
ww.hcrky.com

12451 Plantside Drive
Louisville, KY 42099

DISCLAIMER: We obtained the information contained herein from sources we believe to be reliable, but have not verified its accuracy. Accordingly, no warranty or representation, express or implied, is made as to the accuracy of such information, and it is submitted subject to errors, omissions, change of price, rental or other conditions, withdrawal without notice, and to any specific listing conditions imposed by the owners. As always, you are encouraged to conduct your own investigation in conjunction with your tax, legal and other advisors.

OFFICE SPACE FOR LEASE
PLAZA II AT HURSTBOURNE GREEN
9510 ORMSBY STATION ROAD
 Louisville, KY 40223



Amenities

Hotels	Distance - Miles	Distance - Drive Time
Embassy Suites	.03 Miles	1 Minute
Hilton & Home 2 by Hilton	0.2 Miles	1 Minute
Springhill Suites	0.5 Miles	2 Minutes
Homewood Suites by Hilton	1.2 Miles	3 Minutes
Residence Inn	1.4 Miles	3 Minutes
Hyatt Place	2.1 Miles	5 Minutes

Restaurants	Distance - Miles	Distance - Drive Time
Corner Cafe	0.7 Miles	1 Minute
Louisville Tea Company	0.5 Miles	1 Minute
Mc Allisters	0.4 Miles	2 Minutes
McDonald's	0.4 Miles	2 Minutes
Guacamole	0.6 Miles	2 Minutes
Jason's Deli	1 Mile	2 Minutes
The Bristol	1.1 Miles	2 Minutes
Bombay Grill	1.1 Miles	2 Minutes
Brasserie Provence	1.2 Miles	3 Minutes
McAllister's Deli	0.4 Miles	4 Minutes
Selena's at Willow Lake Tavern	1.7 Miles	4 Minutes
Smash Burger	1.5 Miles	4 Minutes
P.F. Changs	1.6 Miles	4 Minutes
Z's Oyster Bar & Steakhouse	2 Miles	5 Minutes
City Barbeque	1.8 Miles	5 Minutes
Fazoli's	1.8 Miles	5 Minutes
Shalimar	3.3 Miles	5 Minutes
Qdoba	5 Miles	5 Minutes
The Chopshop Salads	5.2 Miles	5 Minutes
Starbucks	5.3 Miles	5 Minutes
Senor Iguanas	5.4 Miles	6 Minutes
Heitzman's Bakery	5.2 Miles	6 Minutes

Contact

Mike DeHart
 mdehart@hcrky.com

Tim Gramig, CCIM
 tgramig@hcrky.com

502.253.1200
 ww.hcrky.com

12451 Plantside Drive
 Louisville, KY 42099

DISCLAIMER: We obtained the information contained herein from sources we believe to be reliable, but have not verified its accuracy. Accordingly, no warranty or representation, express or implied, is made as to the accuracy of such information, and it is submitted subject to errors, omissions, change of price, rental or other conditions, withdrawal without notice, and to any specific listing conditions imposed by the owners. As always, you are encouraged to conduct your own investigation in conjunction with your tax, legal and other advisors.

OFFICE SPACE FOR LEASE
PLAZA II AT HURSTBOURNE GREEN
9510 ORMSBY STATION ROAD
Louisville, KY 40223



Amenities (Continued)

Parks	Acreage	Distance - Miles, Time
AB Sawyer Park	47.25 Acres	0.7 Miles, 1 Minute
EP Tom Sawyer	550 Acres	3.8 Miles, 8 Minutes
Berrytown Park	0.53 Acres	3.8 Miles, 9 Minutes

Fitness	Distance - Miles	Distance - Drive Time
Hurstbourne Green Lake Trail	0 Miles	1 Minute
YMCA Northeast	0.2 Miles	4 Minutes
Louisville Athletic Club – Westport Plaza	2.7 Miles	6 Minutes

Shopping	Distance - Miles	Distance - Drive Time
Oxmoor Centre Mall	2.8 Miles	9 Minutes
Mall St. Matthews	4 Miles	12 Minutes
Paddock Shoppe	4.7 Miles	12 Minutes
Bluegrass Shoppes	15.9 Miles	19 Minutes

Country Clubs	Distance - Miles	Distance - Drive Time
Hurstbourne Country Club	2.9 Miles	3 Minutes
Standard Country Club	4.8 Miles	8 Minutes
Owl Creek Country Club	4.8 Miles	8 minutes
Oxmoor Country Club	5.6 Miles	14 minutes
Valhalla Golf Club	7.9 Miles	20 Minutes
Midland Trail Golf Club	8 Miles	20 Minutes
Lake Forest Country Club	9.4 Miles	22 Minutes

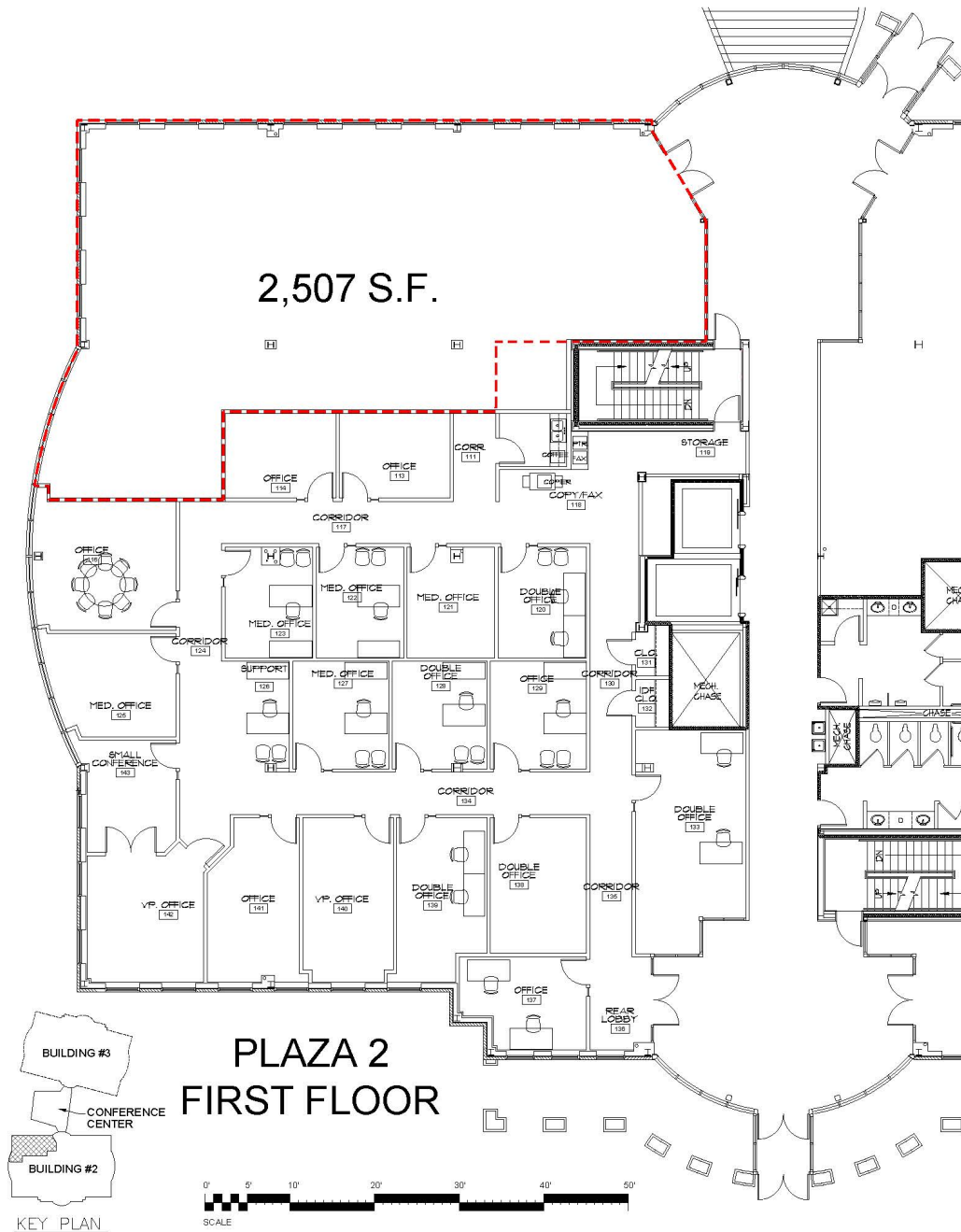
Contact	Mike DeHart mdehart@hcrky.com	Tim Gramig, CCIM tgramig@hcrky.com	502.253.1200 ww.hcrky.com	12451 Plantside Drive Louisville, KY 42099
----------------	---	--	------------------------------	---

DISCLAIMER: We obtained the information contained herein from sources we believe to be reliable, but have not verified its accuracy. Accordingly, no warranty or representation, express or implied, is made as to the accuracy of such information, and it is submitted subject to errors, omissions, change of price, rental or other conditions, withdrawal without notice, and to any specific listing conditions imposed by the owners. As always, you are encouraged to conduct your own investigation in conjunction with your tax, legal and other advisors.

OFFICE SPACE FOR LEASE
PLAZA II AT HURSTBOURNE GREEN
9510 ORMSBY STATION ROAD
Louisville, KY 40223



First Floor ~ 2,507 SF



Contact

Mike DeHart
mdehart@hcrky.com

Tim Gramig, CCIM
tgramig@hcrky.com

502.253.1200
ww.hcrky.com

12451 Plantside Drive
Louisville, KY 42099

DISCLAIMER: We obtained the information contained herein from sources we believe to be reliable, but have not verified its accuracy. Accordingly, no warranty or representation, express or implied, is made as to the accuracy of such information, and it is submitted subject to errors, omissions, change of price, rental or other conditions, withdrawal without notice, and to any specific listing conditions imposed by the owners. As always, you are encouraged to conduct your own investigation in conjunction with your tax, legal and other advisors.