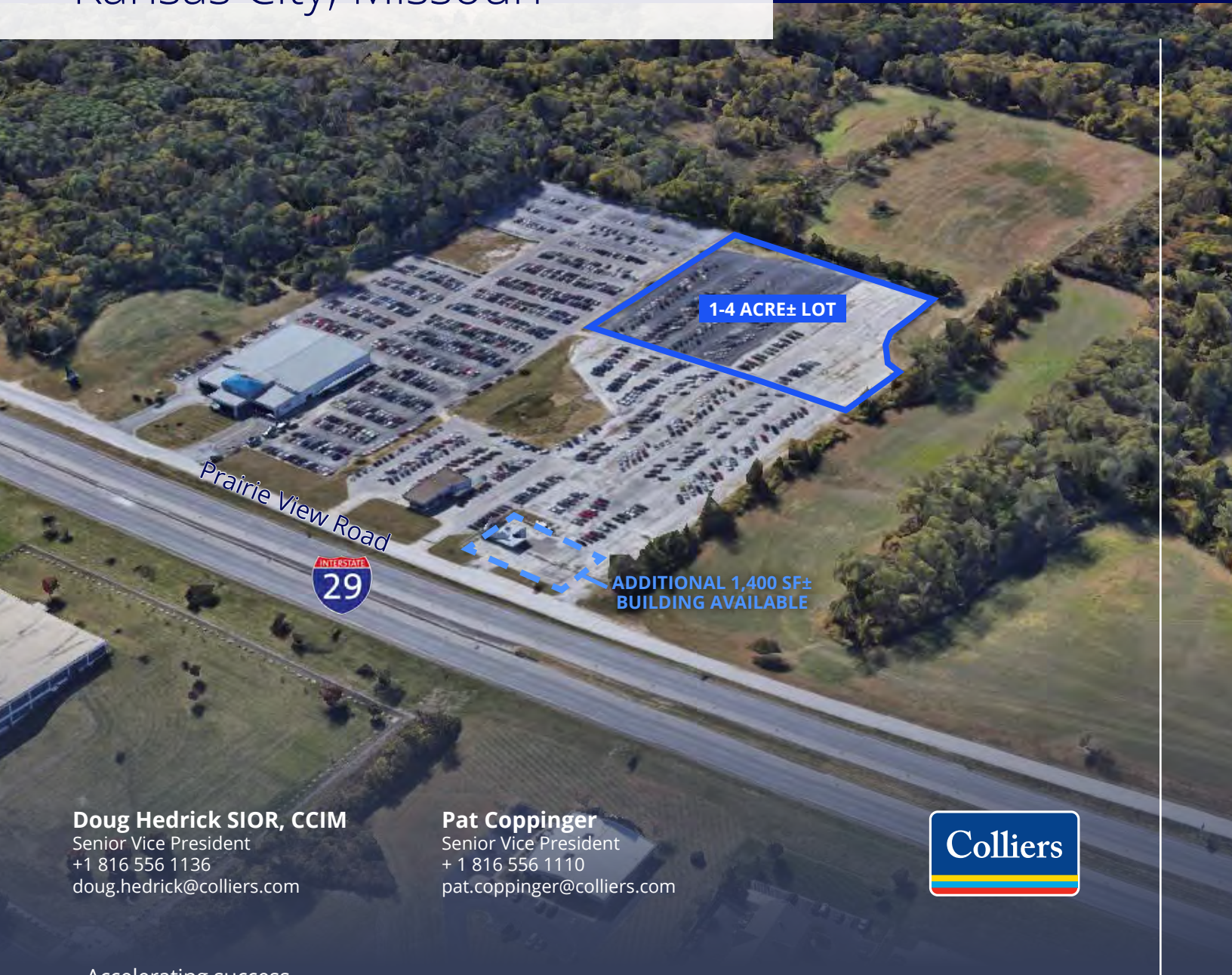


Industrial Land for Lease

1-4± Acre Parking Lot

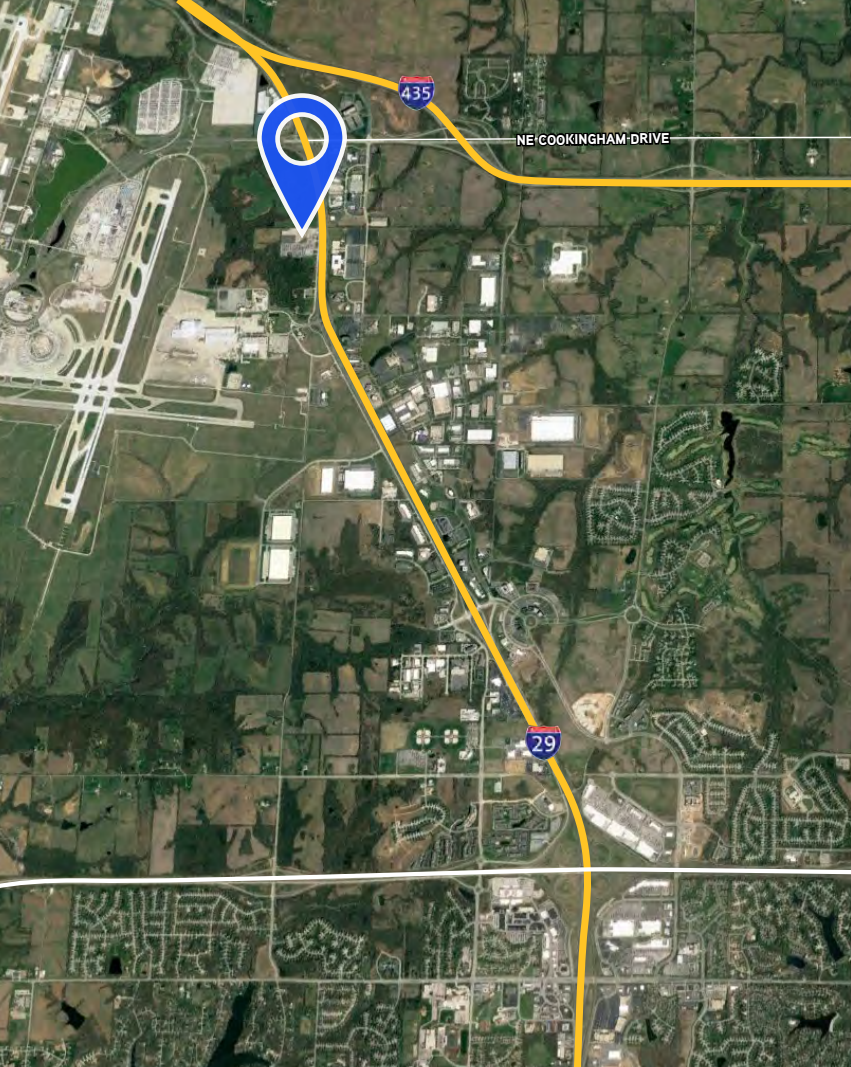
11530 NW Prairie View Road
Kansas City, Missouri



Doug Hedrick SIOR, CCIM
Senior Vice President
+1 816 556 1136
doug.hedrick@colliers.com

Pat Coppinger
Senior Vice President
+ 1 816 556 1110
pat.coppinger@colliers.com





Property Overview

- Total available: 1-4± acres
- Zoning: M1-2
- Excellent exposure from I-29
 - 50,948 VPD traffic count
- Lease rate: \$4,000 per acre per month, gross
- An additional 1,400± SF building with small lot available

11530 NW Prairie View Road | For Lease



Doug Hedrick SIOR, CCIM
Senior Vice President
+1 816 556 1136
doug.hedrick@colliers.com

Pat Coppinger
Senior Vice President
+ 1 816 556 1110
pat.coppinger@colliers.com

Colliers Kansas City
4900 Main Street, Suite 400
Kansas City, Missouri 64112
+1 816 531 5303
www.colliers.com/kansascity