



## Commercial Spaces For Lease

Retail, Restaurant & Office Spaces available ranging ±1,000 SF - ±20,000 SF



MARKET ST  
Inglewood CA

PRESSBERG PROPERTIES

Powered by eXp Commercial

# MARKET STREET

## Commercial Spaces For Lease

### Location

Area Development.....	3
Neighboring Amenities.....	4
New In Inglewood.....	5

### Opportunity

Availabilities .....	8
Floor Plans .....	9

# Development



- |                            |                             |                                 |
|----------------------------|-----------------------------|---------------------------------|
| 1. SoFi Stadium            | 4. Grace Park               | 7. Kenny Scharf Art Gallery     |
| 2. The Forum               | 5. Metro Light Rail Station | 8. LA Philharmonic Youth Center |
| 3. Future LA Clippers Home | 6. Astra                    | 9. The Miracle Theater          |

**====** People Mover Tram

# Amenities

## ● AVAILABLE SPACE

1. Metro Light Rail Station
2. Astra
3. Hilltop Kitchen + Coffee
4. The Creative House Gallery
5. Kaiser Permanente
6. Stuff I Eat
7. LA Philharmonic Youth Center
8. Inglewood Library
9. Inglewood High School
10. Dulan's Soul Food Kitchen
11. Savoy Entertainment Center
12. Emma's Snack Shop
13. Kenny Scharf Art Studio
14. Sip & Sonder
15. Residency Art Gallery
16. The Miracle Theater
17. Market Street Bar & Grill
18. Rusty Pot Cafe
19. Hillcrest Medical Clinic
20. Grace Park





## Neighborhood Highlights

### Hollywood Park / SoFi Stadium

- Brand new \$10B development on 300 acres
- 2.5 miles from LAX
- 30 million estimated visitors per year
- ±500,000 SF of *retail*
- ±2,000,000 SF of *office*
- NFL Media Building ±450,686 SF
- 300-key hotel
- 2,500 residential units

### Confirmed Events

- 2023 Wrestle Mania
- 2023 FCS National Title Game
- 2024 NCAA Final Four
- 2026 FIFA World Cup
- 2028 Olympics Opening & Closing Ceremonies



### New Clippers Arena

- ±120-130 event nights/year
- Opening 2024

### The Forum

- ±200 event nights/year





## The Miracle Theater

- Est. 1937 as The Ritz
- Re-opened 2017 as a live music and performance arts venue



## Astra

- Mixed-use residential and retail development on Market Street
- 242 market-rate rental units,
- 438 Parking spaces
- Anchored by Target



## Kenny Scharf Gallery

- 7,500 SF of gallery space by renown artis Kenny Scharf recently relocatd from Culver City



## LA Philharmonic Youth

- Housed in a 1960's Bank Building re-imagined by architect Frank Ghery
- \$14.5M conversion holds studios, performance space, music library, and rehearsal space.
- The free music education program serves nearly 1,000 students across LA



## Grace Park

- Site of former Daniel Freeman Hospital to be converted to 228 townhomes



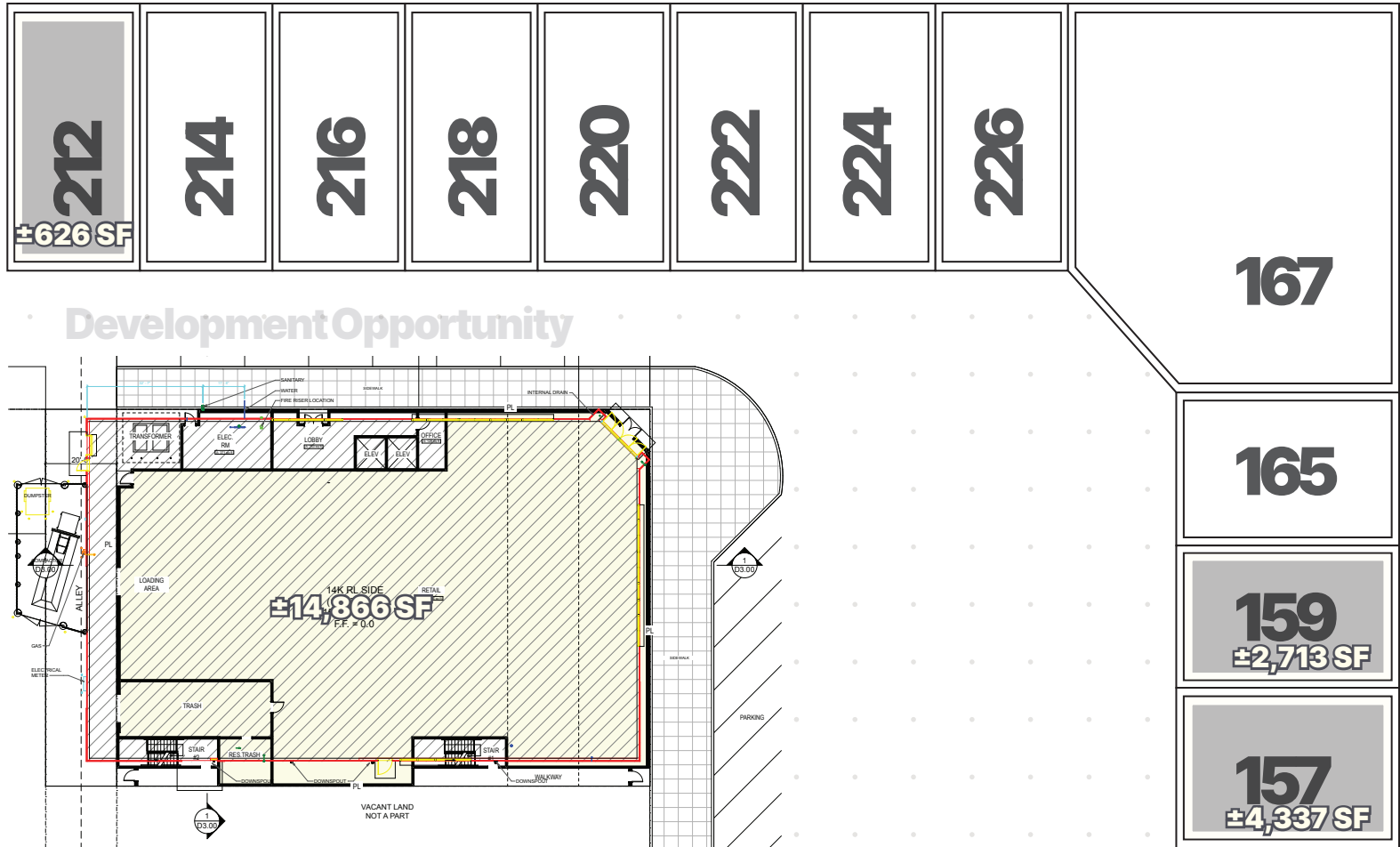
## Metro Light Rail

- Route through Leimert Park, Hyde Park, Inglewood, & Westchester to meet the Green (C) Line
- Estimated opening December 2022
- Downtown Inglewood Station 1/4 Mile from Market Street availabilities

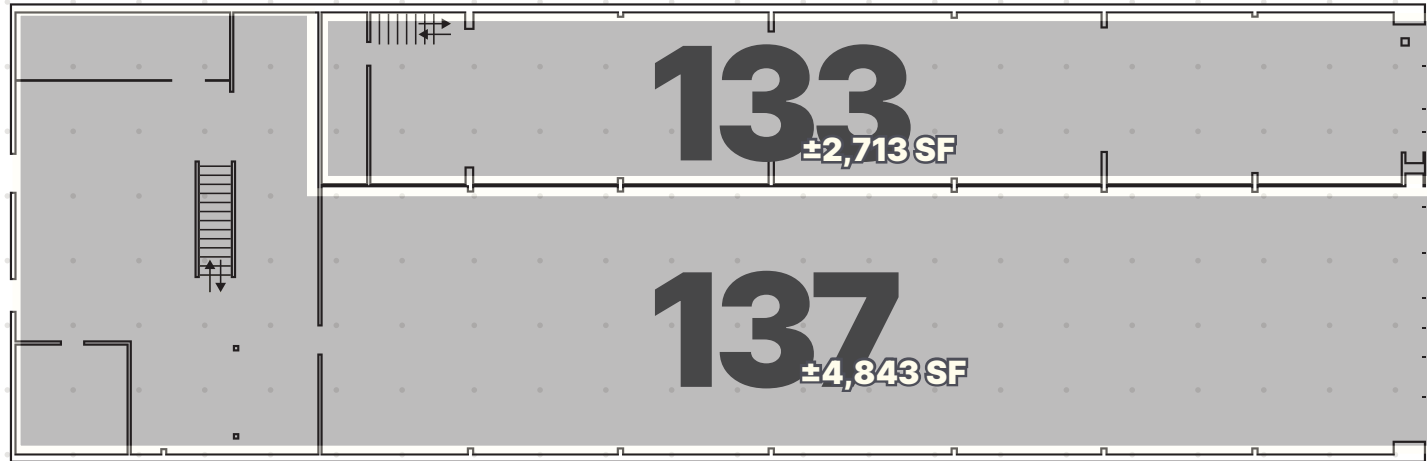
# Availabilities

1. 157-167 N. Market St ±2,713 - ±9,738 SF  
Up to ±14,000SF
2. 133-137 N. Market St ±2,479 - ±9,504 SF
3. 149-155 S. Market St ±5,686 - ±11,473SF
4. 215-217 S. Market St ±19,500 SF
5. 253 -257 S. Market St ±9,825 SF

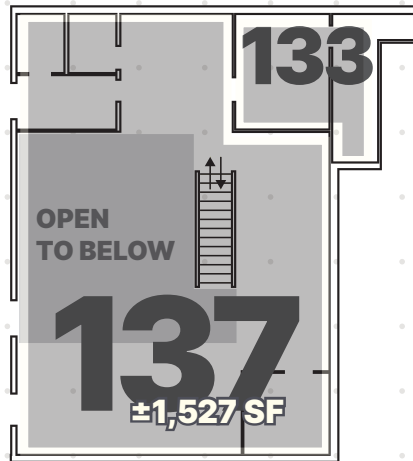




**Ground Floor**

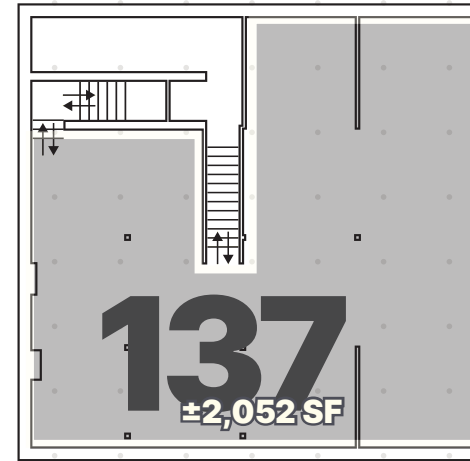


**Second Floor**

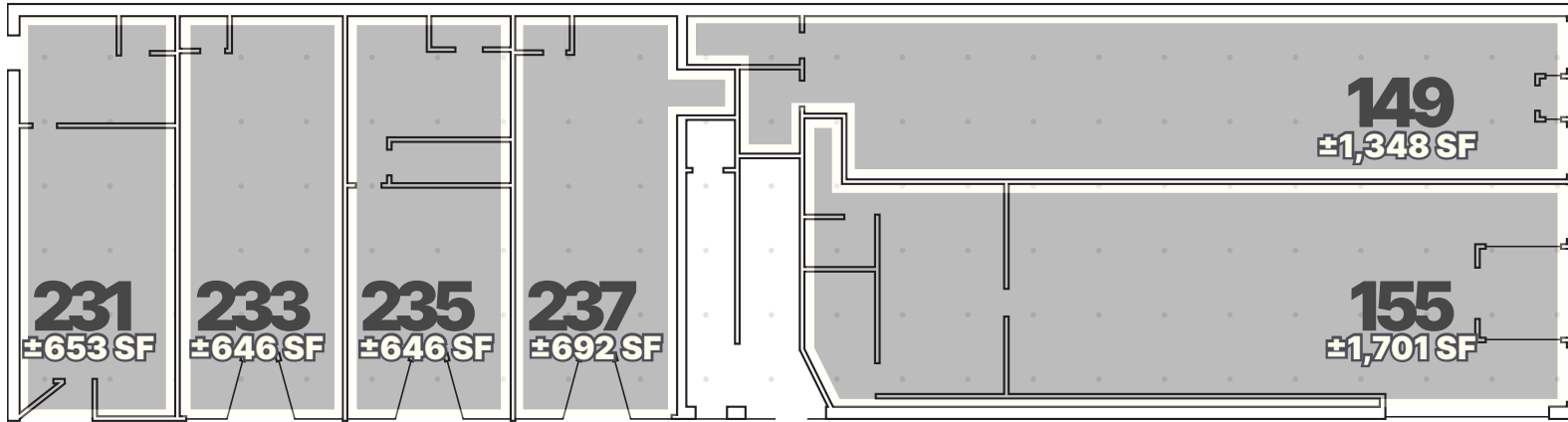


- 1. 133 N. Market St ±2,479 SF
- 2. 137 N. Market St ±7,025 SF

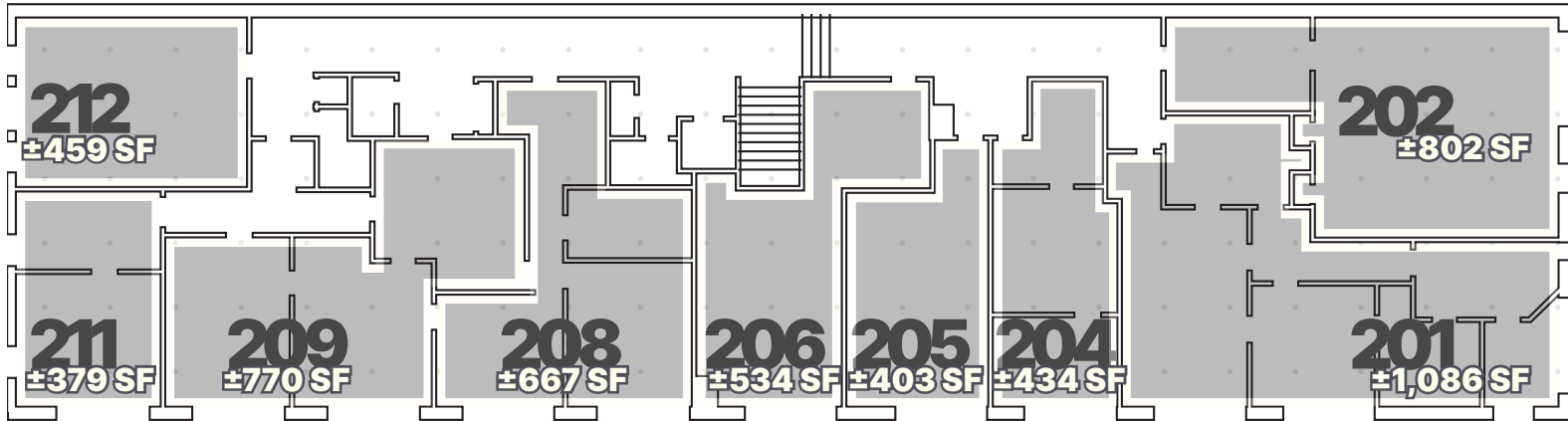
**Basement**



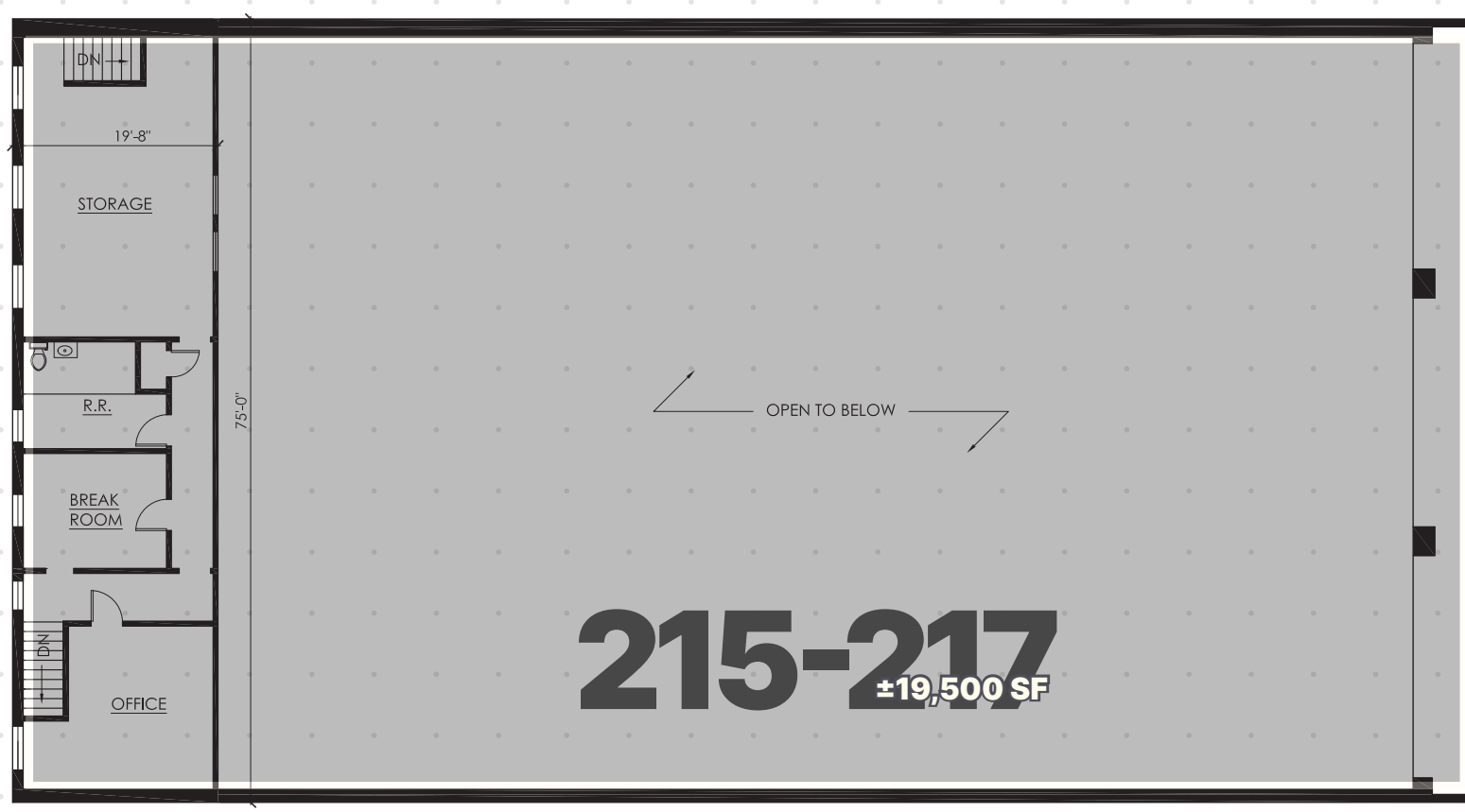
**Ground Floor**



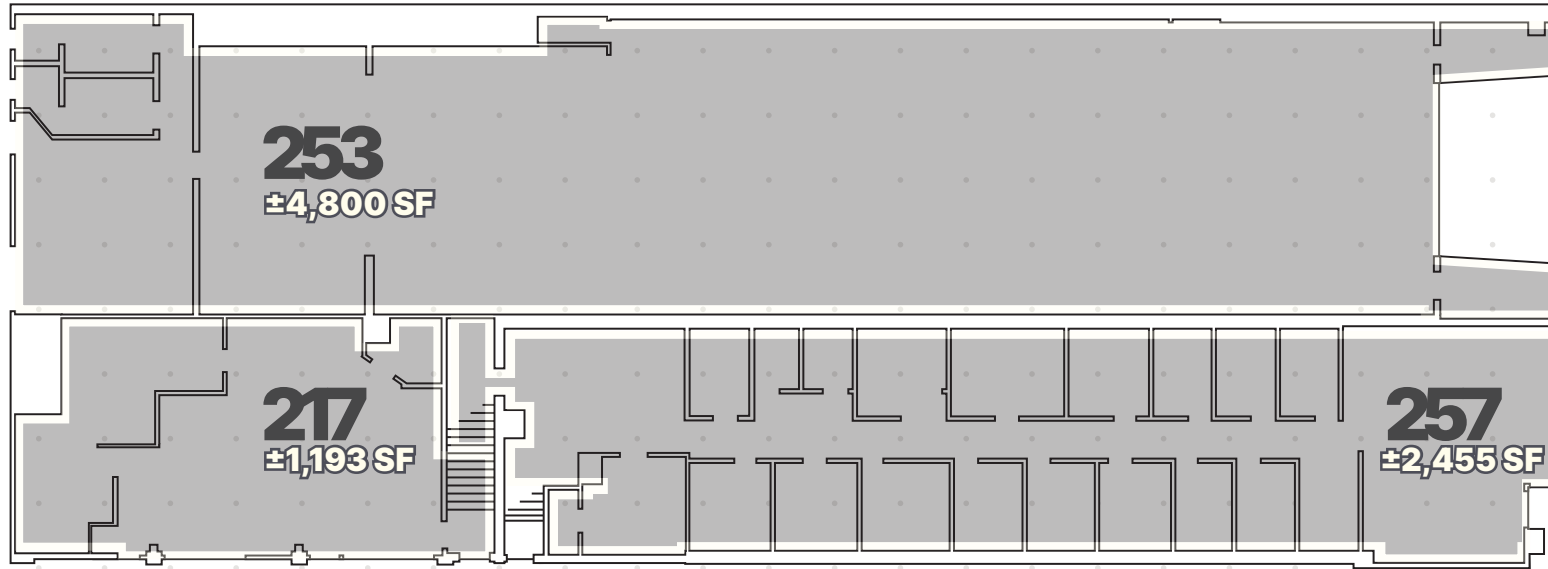
**Second Floor**



215-217 S. Market St.



**Ground Floor**



**Second Floor**

