

For Lease

# 11101 LA REINA AVE

*RETAIL / MEDICAL OFFICE SPACES  
AVAILABLE FOR NNN LEASE*

DOWNEY, CA 90241

circa



11101 LA REINA AVE, DOWNEY, CA 90241



*Former bank space in Downey, CA featuring corner location on La Reina Ave and 2nd St. The property is located near neighborhoods and amenities.*

PROPERTY TYPE	Retail / Medical Office
RETAIL SUITE 101	±5,418 SF
MEDICAL OFFICE SUITE 102	±1,494 SF
MEDICAL OFFICE SUITE 201	±3,612 SF (2nd Floor)
YEAR BUILT / RENOVATED	1960/1993
LEASE TYPE	NNN
PARKING RATIO	4.94/1,000 SF
TERM	Negotiable
CONDITION	Shell space

*\$3/SF NNN*  
*\$0.64/SF*  
ASKING PRICE



NOW  
AVAILABLE

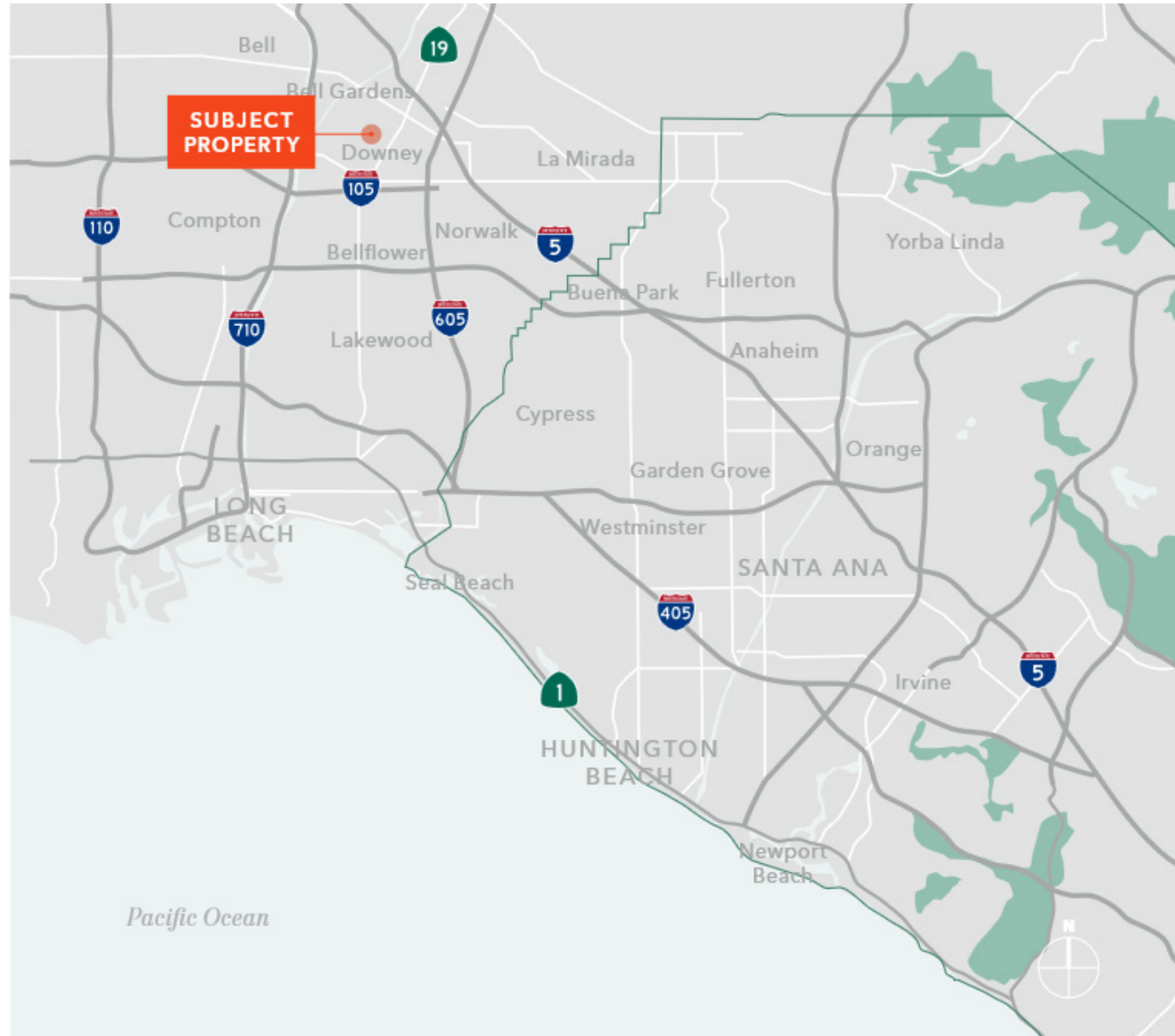
11101 LA REINA AVE, DOWNEY, CA 90241

# PRIME LOCATION

Located on a highly visible corner in  
downtown Downey

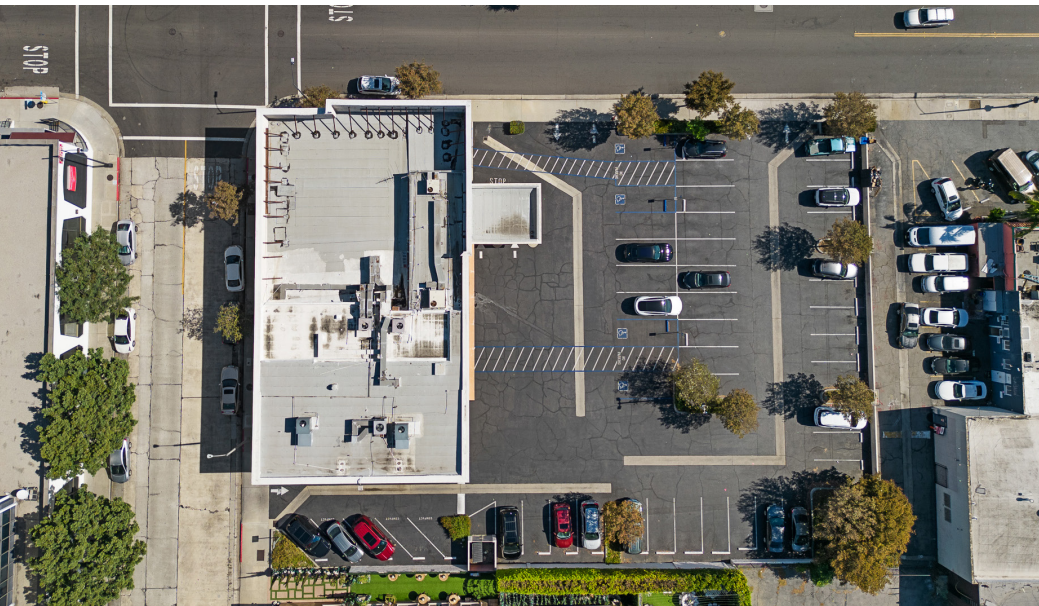
Conveniently located near major  
confluences State Route 19, Interstates 5,  
105, 605, and 710

90 walk score (walker's paradise)





11101 LA REINA AVE, DOWNEY, CA 90241



AVAILABLE FOR LEASE

CIRCA PROPERTIES, INC.



11101 LA REINA AVE  
DOWNEY, CA 90241

*Exclusively leased by*

**JIMMY KIM**

Senior Vice President

714.357.5408

Jimmy@circacommercial.com

LIC N° 01992028

**NIMMI RICHARDS**

Associate

714.875.0290

nimmi@teamcirca.com

LIC N° 02169322

TEAMCIRCA.COM

This information supplied herein is from sources we deem reliable. It is provided without any representation, warranty, or guarantee, expressed or implied as to its accuracy. Prospective Buyer or Tenant should conduct an independent investigation and verification of all matters deemed to be material, including, but not limited to, statements of income and expenses. Consult your attorney, accountant, or other professional advisor.

**circa**