

Cheswick  
Shopping Center

1210 - 1322 Pittsburgh Street  
Cheswick, PA 15024



- Only One Space Remaining
- + 1,530 square foot first generation space with nearly 22' of frontage
  - + High traffic shopping center with ample parking and multiple full access curb cuts from Pittsburgh Street
  - + Good demographics including the communities of Cheswick, Harmar and Springdale
  - + 17,064 traffic count at the intersection of Pittsburgh Street and Pillow Avenue
  - + Ground lease or build-to-suit opportunities:
    - C-1 | 7,225 sq. ft.
    - C-2 | 10,000 sq. ft.

| 2024 Demographics        | One Mile | Three Miles | Five Miles |
|--------------------------|----------|-------------|------------|
| Population               | 5,098    | 30,080      | 89,287     |
| Daytime Population       | 4,708    | 30,554      | 84,803     |
| Households               | 2,380    | 13,967      | 40,080     |
| Average Household Income | \$90,491 | \$97,835    | \$102,277  |

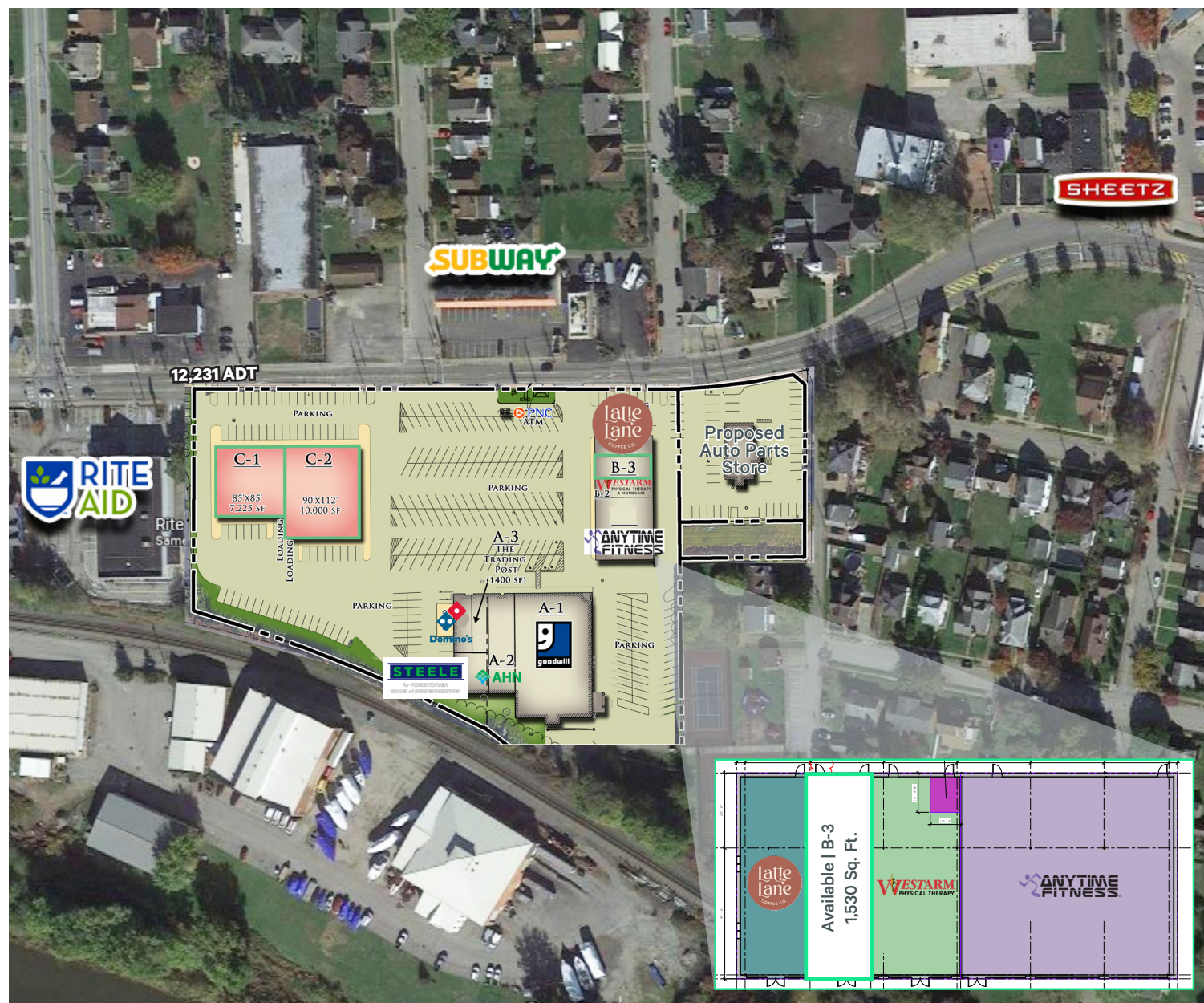




## Cheswick Shopping Center

1210 - 1322 Pittsburgh Street Cheswick, PA 15024

For Lease



## Contact Us

**Steven M. Esposito**

First Vice President

+1 412 716 4865

steven.esposito@cbre.com

© 2024 CBRE, Inc. All rights reserved. This information has been obtained from sources believed reliable but has not been verified for accuracy or completeness. CBRE, Inc. makes no guarantee, representation or warranty and accepts no responsibility or liability as to the accuracy, completeness, or reliability of the information contained herein. You should conduct a careful, independent investigation of the property and verify all information. Any reliance on this information is solely at your own risk. CBRE and the CBRE logo are service marks of CBRE, Inc. All other marks displayed on this document are the property of their respective owners, and the use of such marks does not imply any affiliation with or endorsement of CBRE. Photos herein are the property of their respective owners. Use of these images without the express written consent of the owner is prohibited.

[www.cbre.us/pittsburgh](http://www.cbre.us/pittsburgh)

**CBRE**