

FOR SALE OR LEASE

# 212 N GALES ST

PORT ANGELES, WA 98362



*Exclusively listed by*

BRUCE BARKER, CCIM, MBA  
253.722.1459  
bruce.barker@kidder.com

BENJAMIN A. NORBE  
253.722.1410  
ben.norbe@kidder.com

KIDDER.COM

**km** Kidder  
Mathews



FOR SALE OR LEASE

PROPERTY OVERVIEW

BUILDING SF	18,000
DEMISABLE TO	6,000 SF / 12,000 SF / 18,000 SF
YEAR BUILT	1975
CLEAR HEIGHT	14' - 16'
LOADING	4 Dock High, 6 Grade Level (one ramped)
LAND AREA	100,188 SF (2.3 AC)
TAX PARCEL #	63012571500 (UNC) (1.9 Acres), 063012610310 (MD) (0.3 Acres), 063012610300 (MD) (0.1 Acres)

ZONING

Urban Modern Density (UNC). Urban Neighborhood Commercial zone is to provide a mix of limited, low-impact, neighborhood commercial activities and moderately high density urban residential development within urban growth areas. And Urban Moderate Density (MD). The purpose of the Urban Moderate Density zoning district is provide areas of moderately high density urban development within urban growth areas. This zone allows single-family residences, duplexes and multiple-family residential development which is free from encroachment of commercial and industrial activities.

**\$2.1M**  
SALE PRICE

**\$7.00**  
SF/YR + NNN



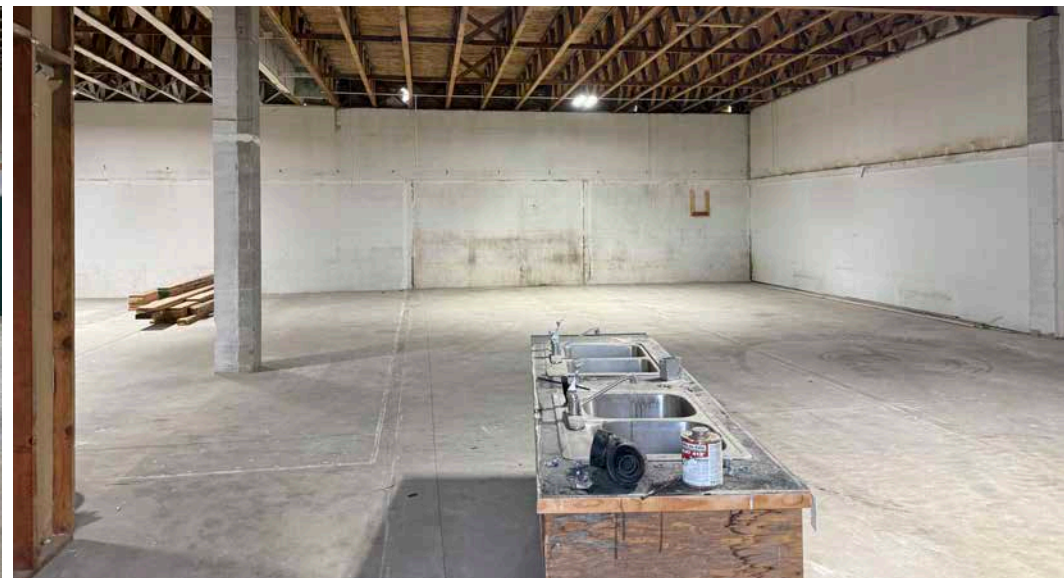
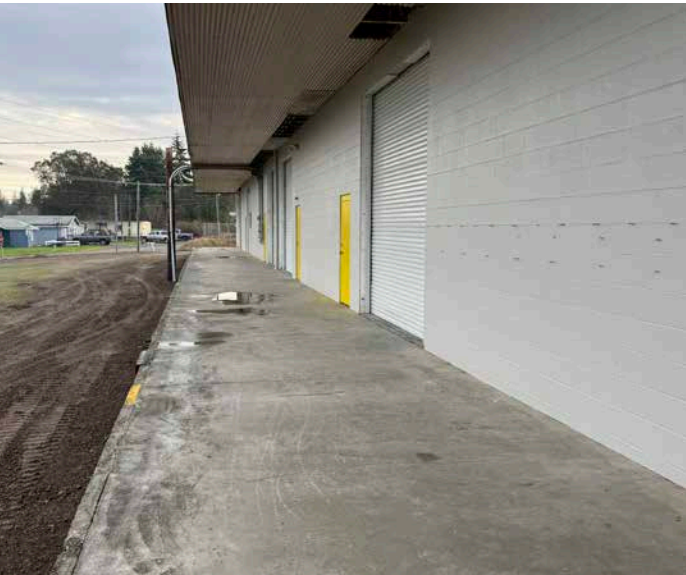
KIDDER.COM

This information supplied herein is from sources we deem reliable. It is provided without any representation, warranty, or guarantee, expressed or implied as to its accuracy. Prospective Buyer or Tenant should conduct an independent investigation and verification of all matters deemed to be material, including, but not limited to, statements of income and expenses. Consult your attorney, accountant, or other professional advisor. All Kidder Mathews designs are the sole property of Kidder Mathews. Branded materials and layouts are not authorized for use by any other firm or person.





FOR SALE OR LEASE



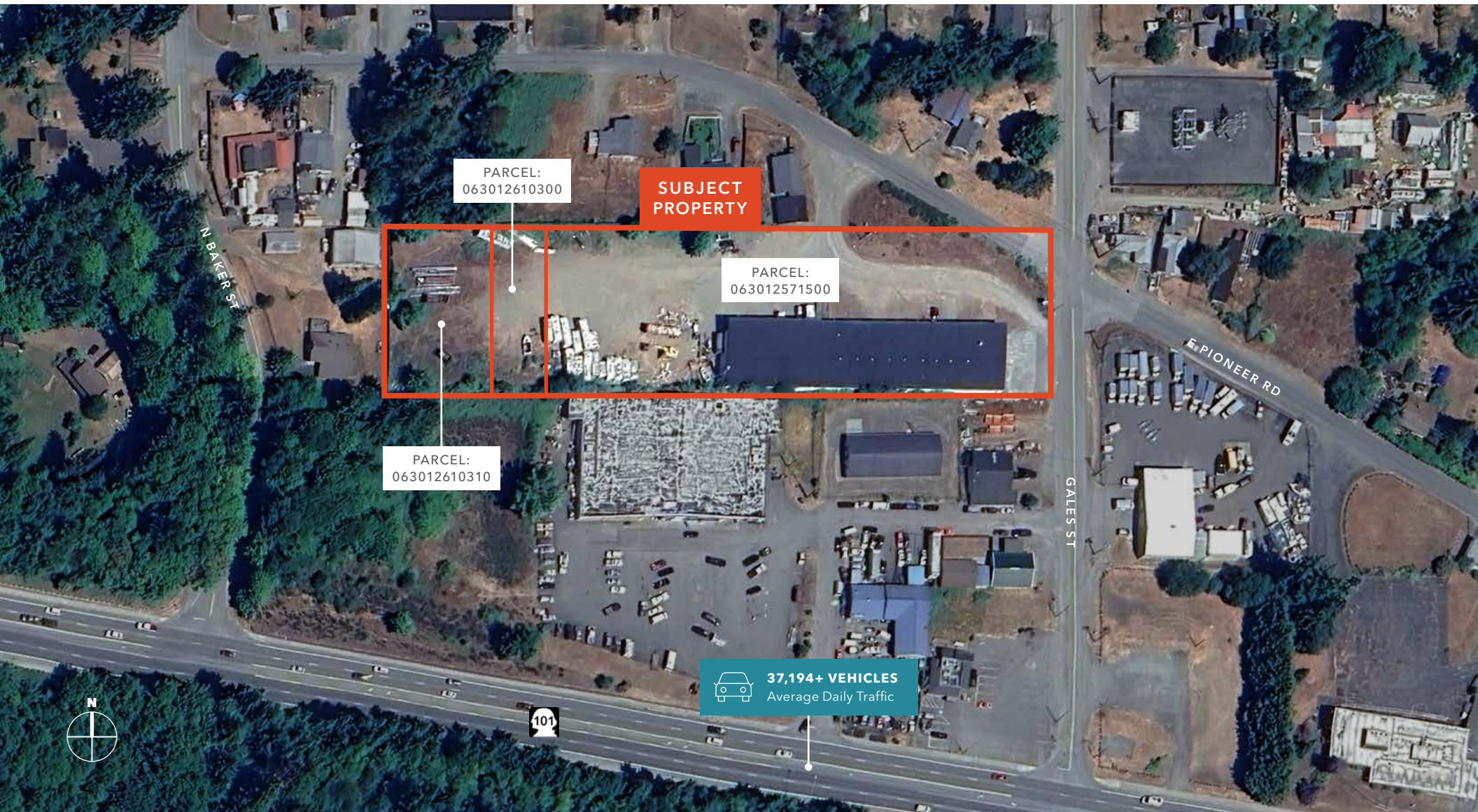
[KIDDER.COM](http://KIDDER.COM)

This information supplied herein is from sources we deem reliable. It is provided without any representation, warranty, or guarantee, expressed or implied as to its accuracy. Prospective Buyer or Tenant should conduct an independent investigation and verification of all matters deemed to be material, including, but not limited to, statements of income and expenses. Consult your attorney, accountant, or other professional advisor. All Kidder Mathews designs are the sole property of Kidder Mathews. Branded materials and layouts are not authorized for use by any other firm or person.





FOR SALE OR LEASE



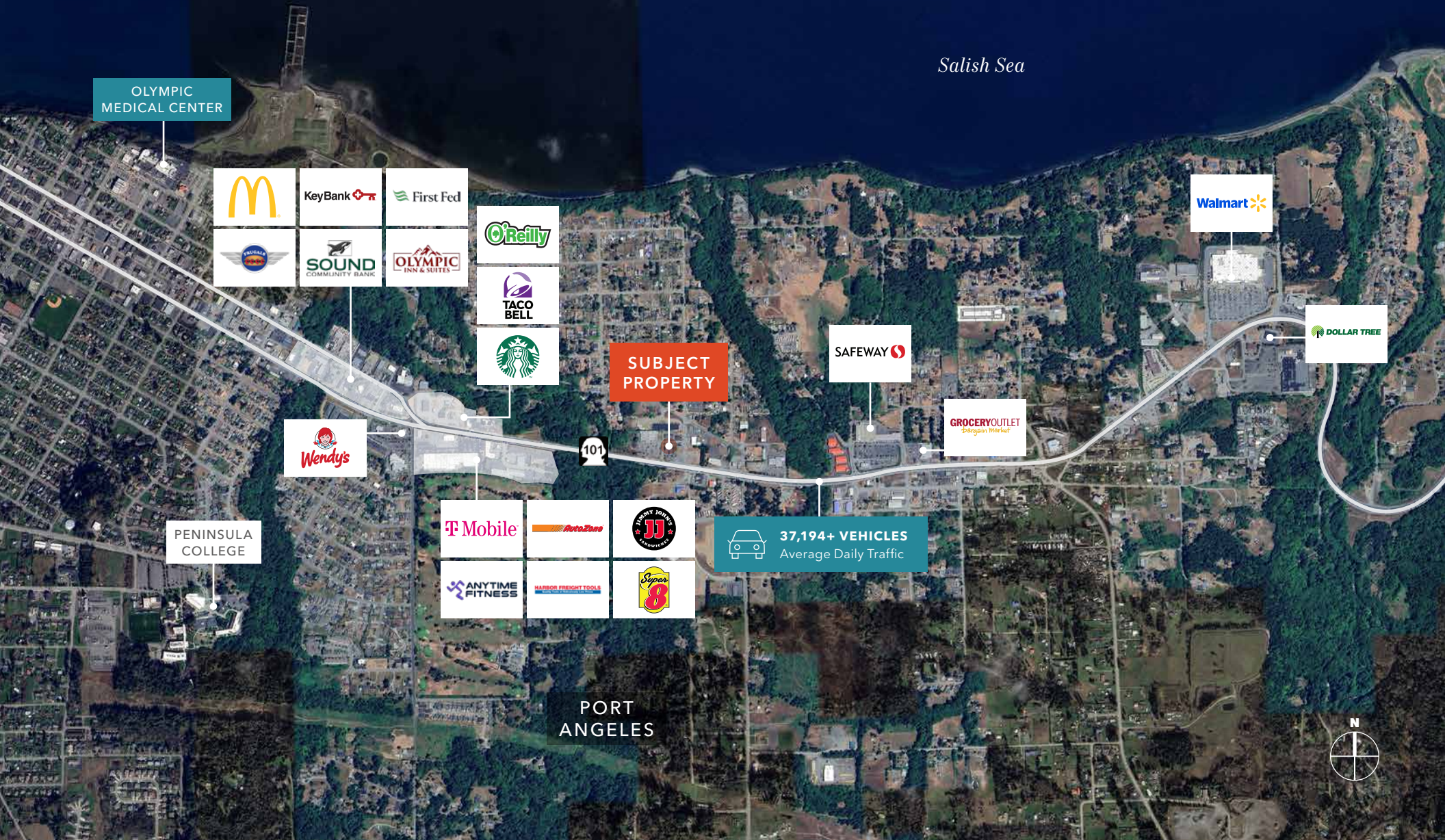
KIDDER.COM

This information supplied herein is from sources we deem reliable. It is provided without any representation, warranty, or guarantee, expressed or implied as to its accuracy. Prospective Buyer or Tenant should conduct an independent investigation and verification of all matters deemed to be material, including, but not limited to, statements of income and expenses. Consult your attorney, accountant, or other professional advisor. All Kidder Mathews designs are the sole property of Kidder Mathews. Branded materials and layouts are not authorized for use by any other firm or person.





FOR SALE OR LEASE



KIDDER.COM

This information supplied herein is from sources we deem reliable. It is provided without any representation, warranty, or guarantee, expressed or implied as to its accuracy. Prospective Buyer or Tenant should conduct an independent investigation and verification of all matters deemed to be material, including, but not limited to, statements of income and expenses. Consult your attorney, accountant, or other professional advisor. All Kidder Mathews designs are the sole property of Kidder Mathews. Branded materials and layouts are not authorized for use by any other firm or person.



# DEMOGRAPHICS

## POPULATION

	1 Mile	3 Miles	5 Miles
2010 CENSUS	2,937	16,319	27,320
2020 CENSUS	3,064	17,001	28,712
2025 ESTIMATED	3,077	16,662	28,467
2030 PROJECTED	3,064	16,606	28,525

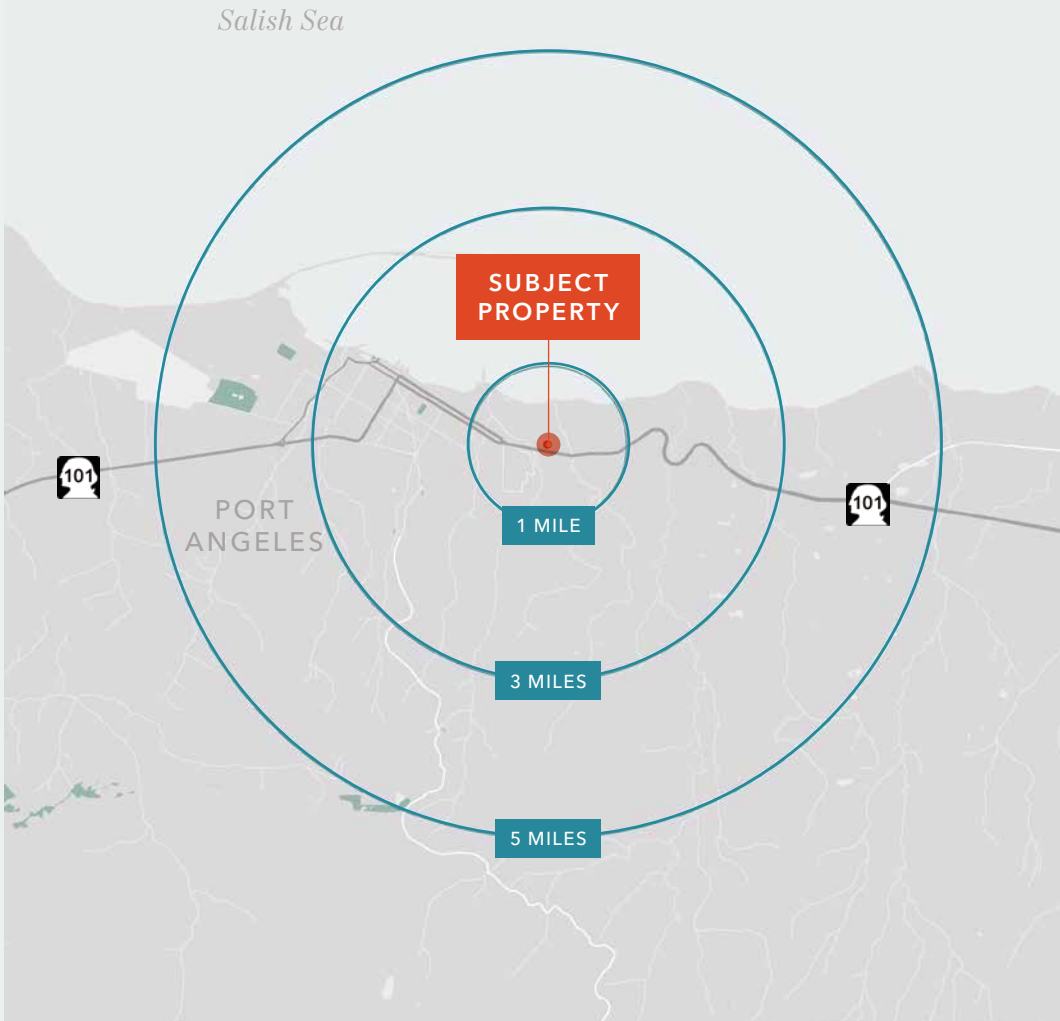
## MEDIAN AGE & GENDER

	1 Mile	3 Miles	5 Miles
MEDIAN AGE	49.9	46.1	45.7
% FEMALE	50.1%	49.9%	50.0%
% MALE	49.9%	50.1%	50.0%

## HOUSEHOLD INCOME

	1 Mile	3 Miles	5 Miles
2025 MEDIAN	\$62,892	\$70,642	\$72,988
2030 MEDIAN PROJECTED	\$62,803	\$70,671	\$73,075
2025 AVERAGE	\$80,222	\$87,882	\$91,938
2030 AVERAGE PROJECTED	\$80,241	\$88,082	\$92,190

Data Source: ©2026, Sites USA



## KIDDER.COM

This information supplied herein is from sources we deem reliable. It is provided without any representation, warranty, or guarantee, expressed or implied as to its accuracy. Prospective Buyer or Tenant should conduct an independent investigation and verification of all matters deemed to be material, including, but not limited to, statements of income and expenses. Consult your attorney, accountant, or other professional advisor. All Kidder Mathews designs are the sole property of Kidder Mathews. Branded materials and layouts are not authorized for use by any other firm or person.