

FOR SALE OR FOR LEASE

~~\$1,310,000~~ \$1,133,000

\$1.90 Gross / PSF

Office Condominium: 4962 El Camino Real, Suite 201, Los Altos, CA 94022



PROPERTY DETAILS

- Available Now!
- Suite 201: ±1,310 SF
- HOA Fee: Approximately \$820 per month
- Central Heating, Air Conditioning, Kitchen
- Centrally located from 280, 85, and 101 Caltrain: 0.8 mile walk (16 mins)
- Close to Amenities: Village at San Antonio, Peet's Coffee, Starbucks and Whole Foods
- CT Commercial Zoning Allows Medical and Dental Clinics

Contact Agents For Details



Andrew Peceimer
Senior Commercial Real Estate Agent
DRE #00993289
(650) 344-4300
apeceimer@cbcburlingame.com



Garrett Swartz
Commercial Real Estate Agent
DRE #02178894
(650) 352-3302
gswartz@cbcburlingame.com



**COLDWELL BANKER
COMMERCIAL**
WESTBAY REAL ESTATE
GROUP

1575 Bayshore Highway, Suite 100,
Burlingame, CA 94010
650-344-4300 | CBCBurlingame.com

FOR SALE OR FOR LEASE

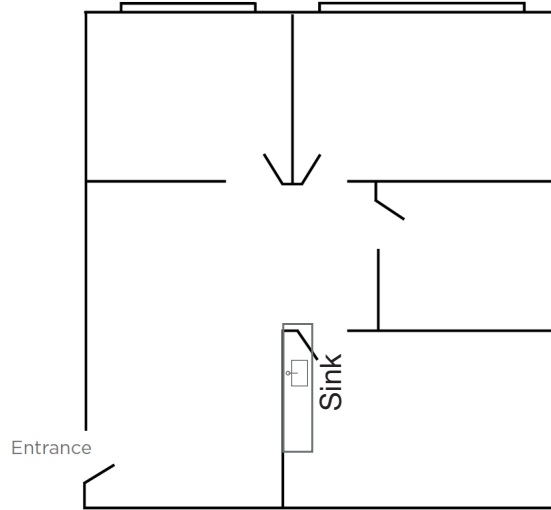
~~\$1,310,000~~ \$1,133,000

\$1.90 Gross / PSF

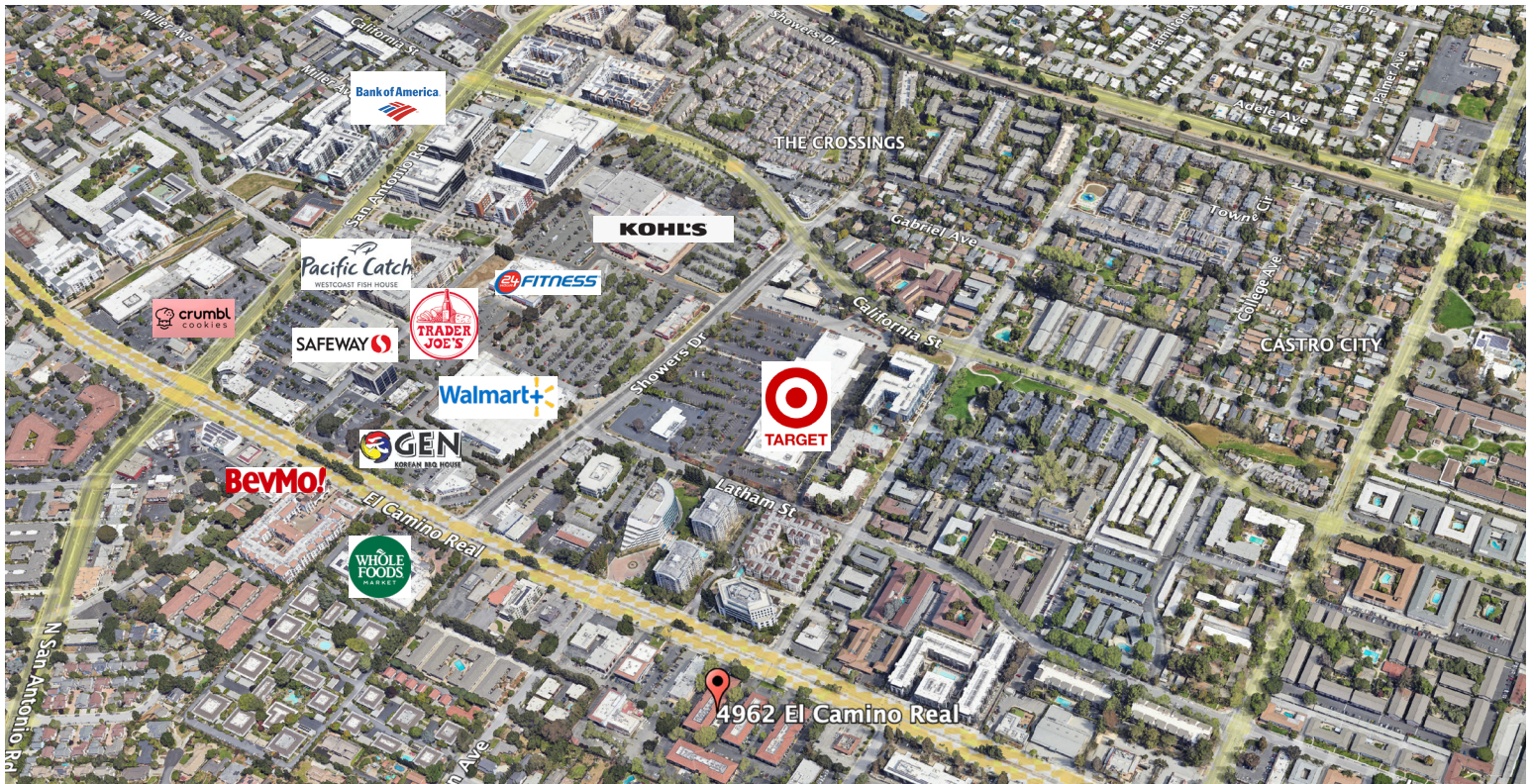
Office Condominium: 4962 El Camino Real, Suite 201, Los Altos, CA 94022

FLOOR PLAN

* Floor Plan Not to Scale



NEARBY RETAILERS



COLDWELL BANKER
WESTBAY REAL ESTATE
GROUP

1575 Bayshore Highway, Suite 100,
Burlingame, CA 94010
650-344-4300 | CBCBurlingame.com