

For Lease

CBRE

2nd Generation Restaraunt

6507 Jester Blvd | Austin, TX | 1,750 SF



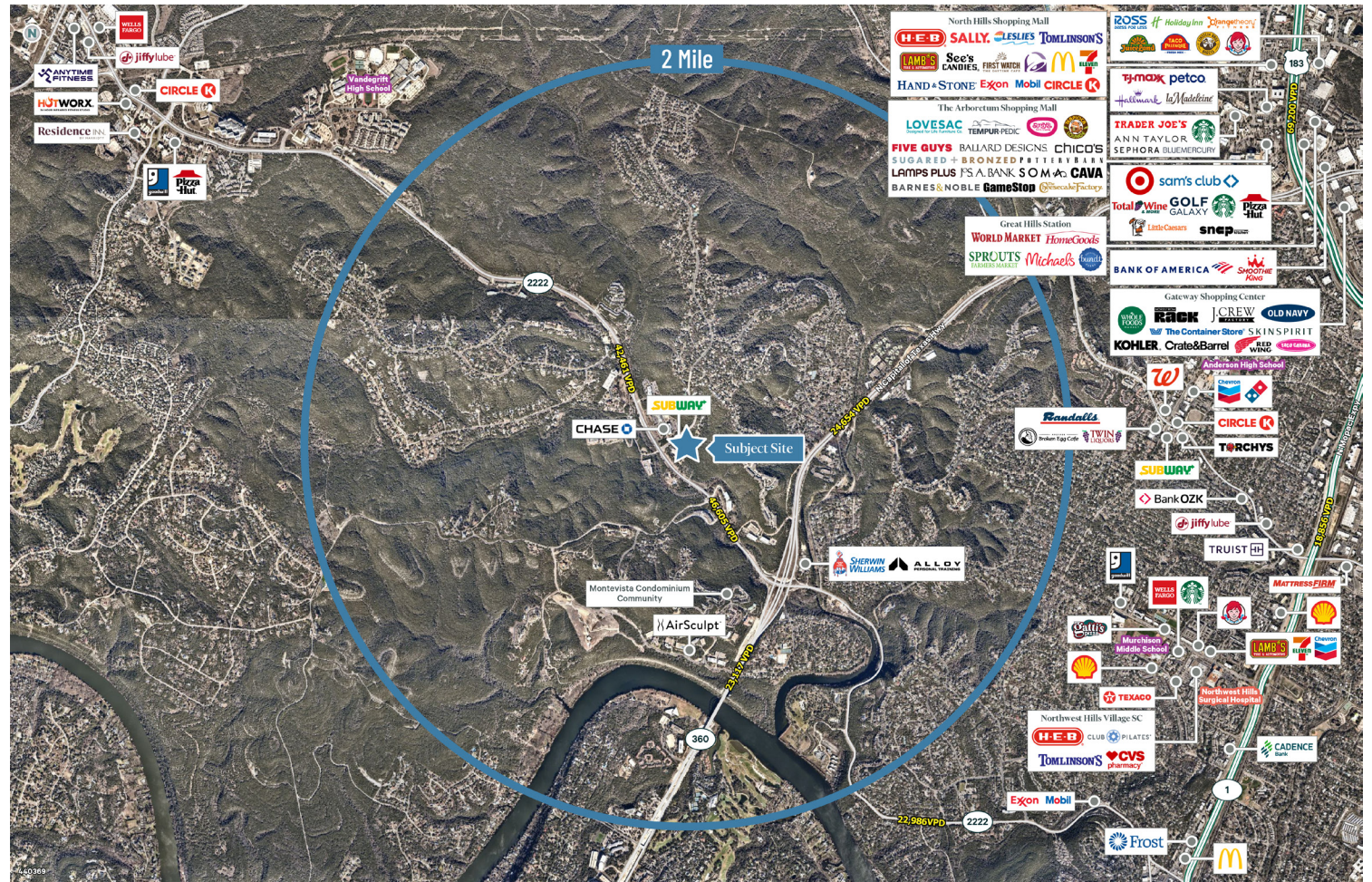
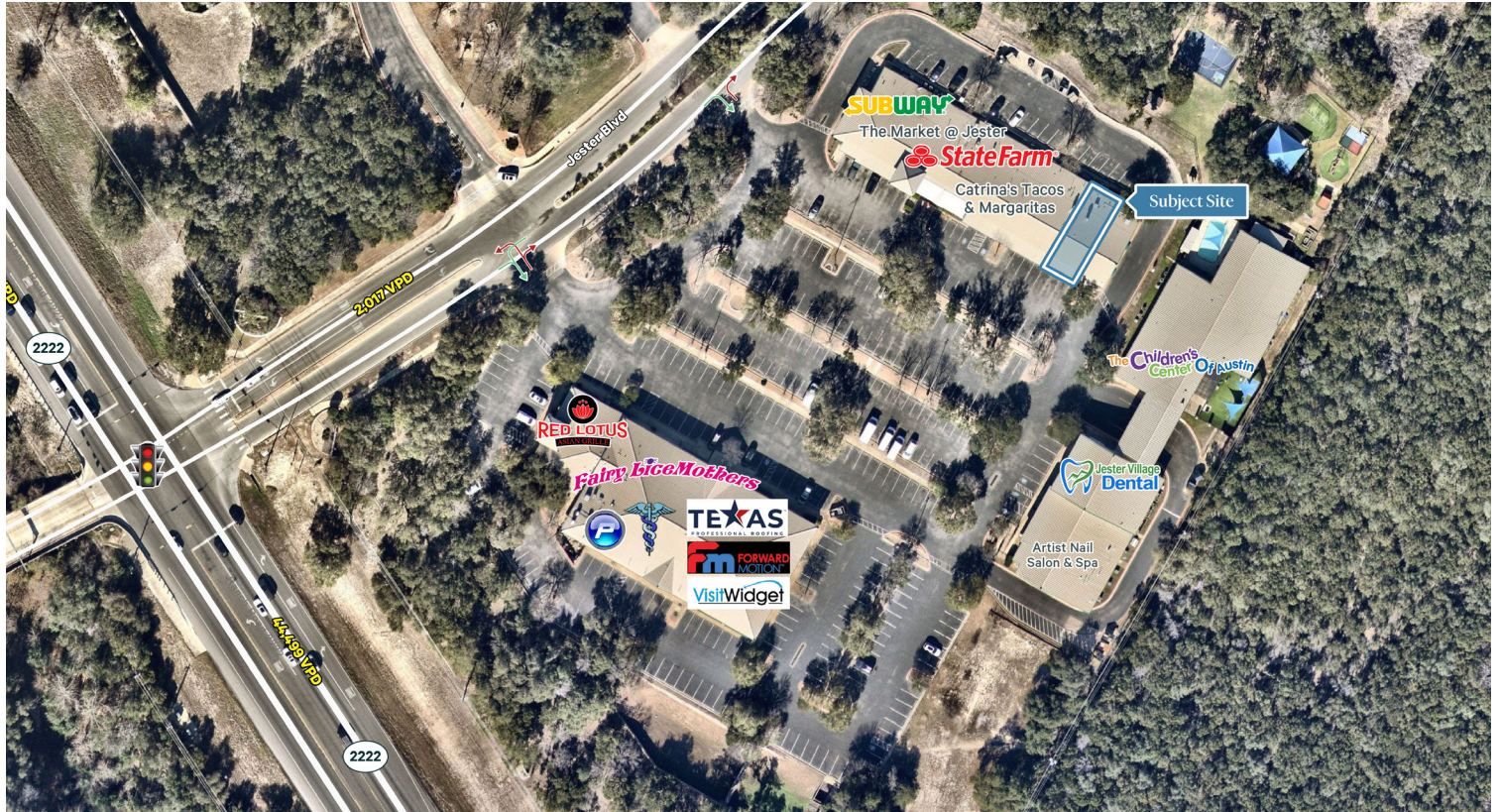
Property Details

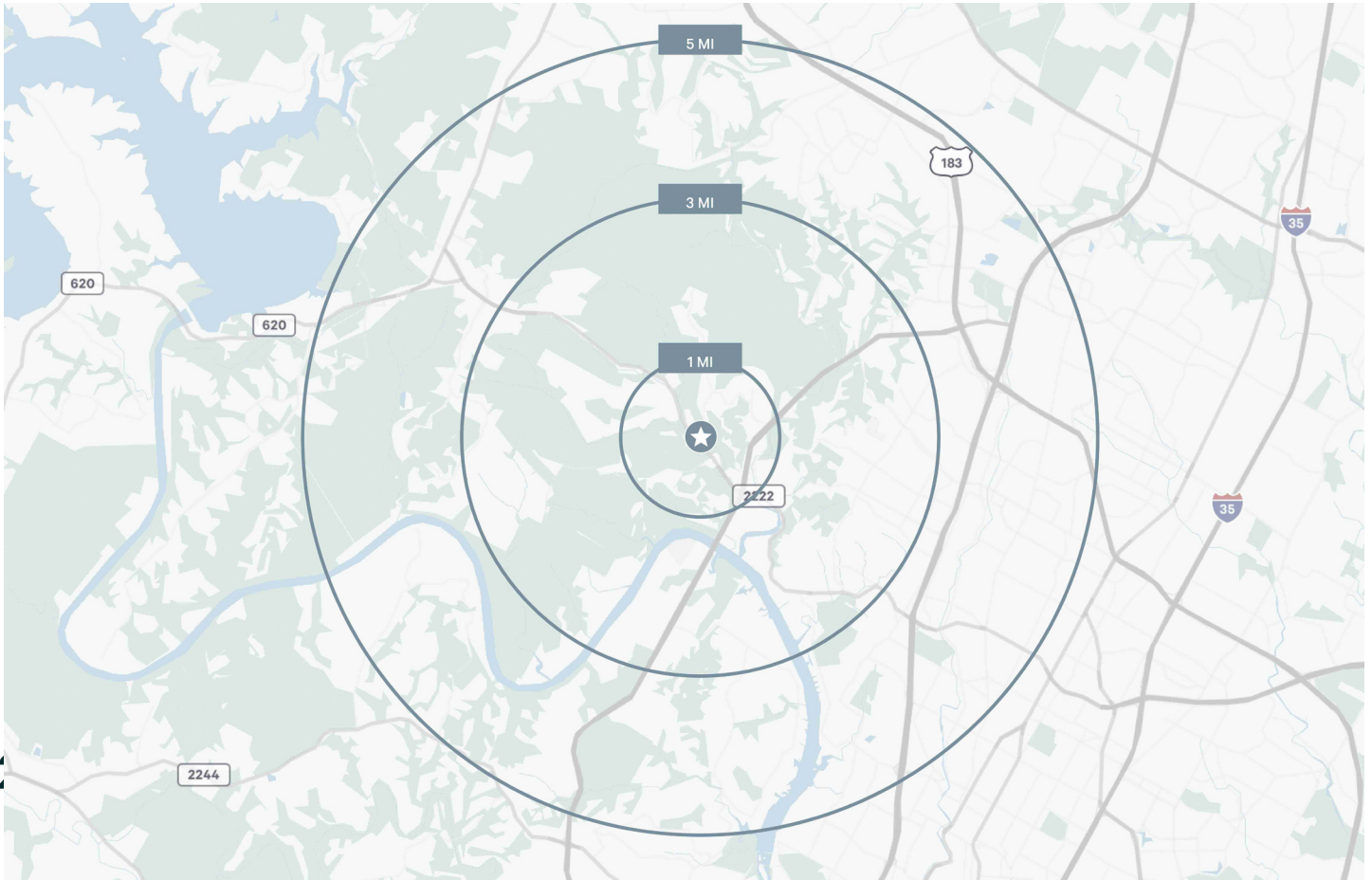
- + 1,750 SF Former Papa Johns Available
- + Located in Jester Village Shopping Center
18,000 SF GLA
- + West Austin Neighborhood Center minutes
from Austin's iconic 360 Bridge
- + 75 surface parking spaces
- + **Taxes:** \$3.46/SF (2025)
- + **Contact Broker for Rates**

Nearby Retailers









2026 Demographics	1-Mile	3-Miles	5-Miles
Population	4,649	37,023	153,147
Daytime Population	6,987	46,997	219,081
Median Age	41.7	42.7	39.2
Average Household Income	\$184,174	\$208,222	\$182,670
Average Household Size	1.93	2.16	2.12
Businesses	347	2,273	11,657
Employees	3,741	20,261	115,006

Traffic Counts	
City Park Rd	5,903 VPD
Jester Blvd	3,461 VPD
Beauford Dr	2,753 VOD

Source: Costar

Contact Us

Davis Franklin
Associate
+1 512 965 4112
davis.franklin@cbre.com

© 2026 CBRE, Inc. All rights reserved. This information has been obtained from sources believed reliable but has not been verified for accuracy or completeness. CBRE, Inc. makes no guarantee, representation or warranty and accepts no responsibility or liability as to the accuracy, completeness, or reliability of the information contained herein. You should conduct a careful, independent investigation of the property and verify all information. Any reliance on this information is solely at your own risk. CBRE and the CBRE logo are service marks of CBRE, Inc. All other marks displayed on this document are the property of their respective owners, and the use of such marks does not imply any affiliation with or endorsement of CBRE. Photos herein are the property of their respective owners. Use of these images without the express written consent of the owner is prohibited.