

Broadway Retail Center - Office/Retail

1149 BROADWAY, ANN ARBOR, MI 48105



Swisher
COMMERCIAL

FOR LEASE



SUMMARY

Lease Rate:

Contact Broker

Available SF:

3,400 SF

Zoning:

C-1
City of Ann Arbor

PROPERTY OVERVIEW

Free standing office/retail building located across the street from the new 736 unit Beekman on Broadway apartment complex. This building offers 12 free, at your door, parking spaces. Beautiful finishes with 4 private offices and private restrooms. Space can be divided. Please contact broker for details.

Thirty day notice availability.

Area has mixture of residential, medical staff/patient, and student traffic. Just minutes from and walkable to Kerrytown and downtown Ann Arbor. Easy access to M-14 via N. Main Street.

***Building
relationships.***

208 East Washington Street Ann Arbor, MI 48104

734.663.0501

Randy Maas

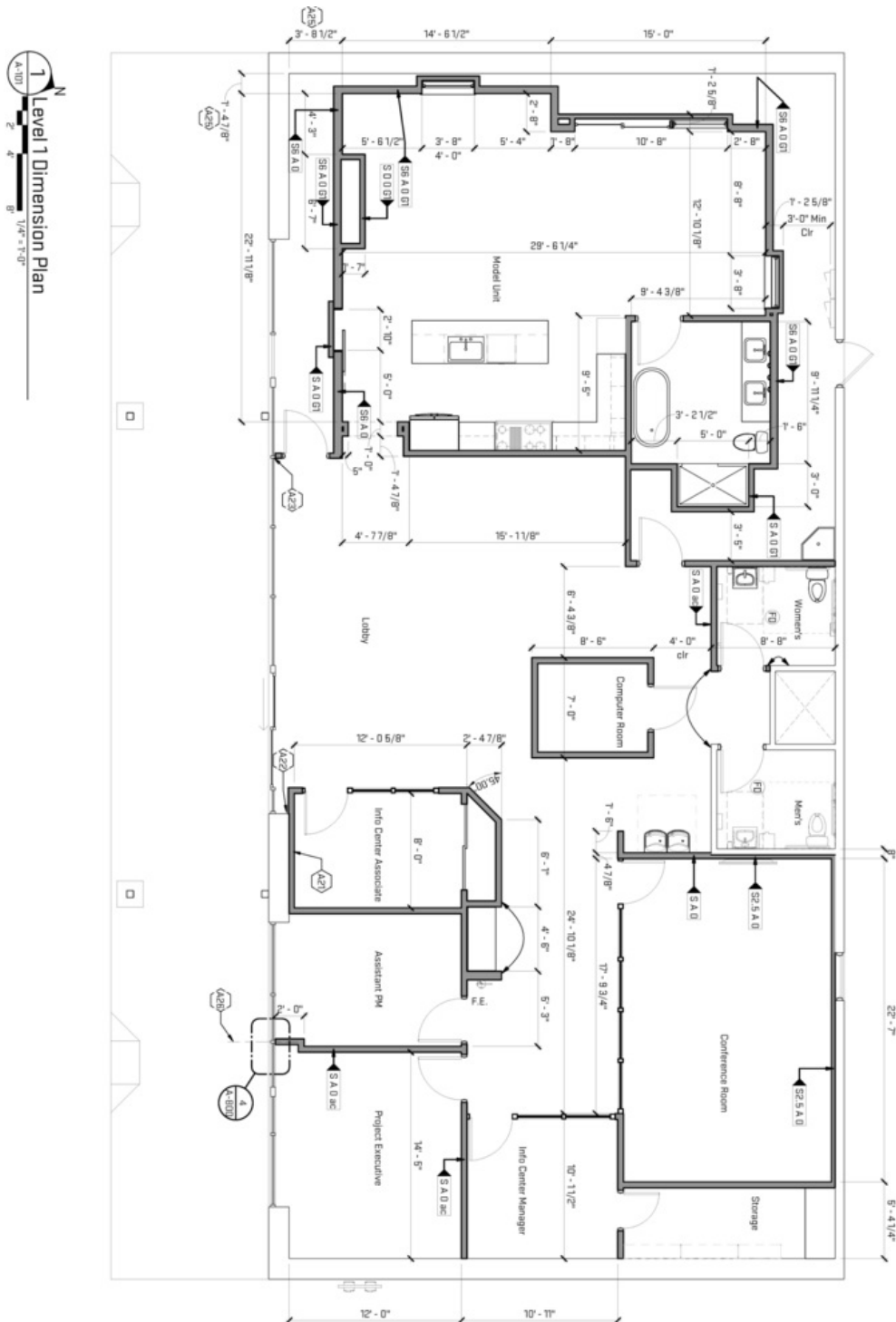
734.222.7525

RMAAS@SWISHERCOMMERCIAL.COM

SWISHERCOMMERCIAL.COM

Broadway Retail Center - Office or Retail Building

1149 BROADWAY, ANN ARBOR, MI 48105



**Building
relationships.**

208 East Washington Street Ann Arbor, MI 48104

734.663.0501

Randy Maas

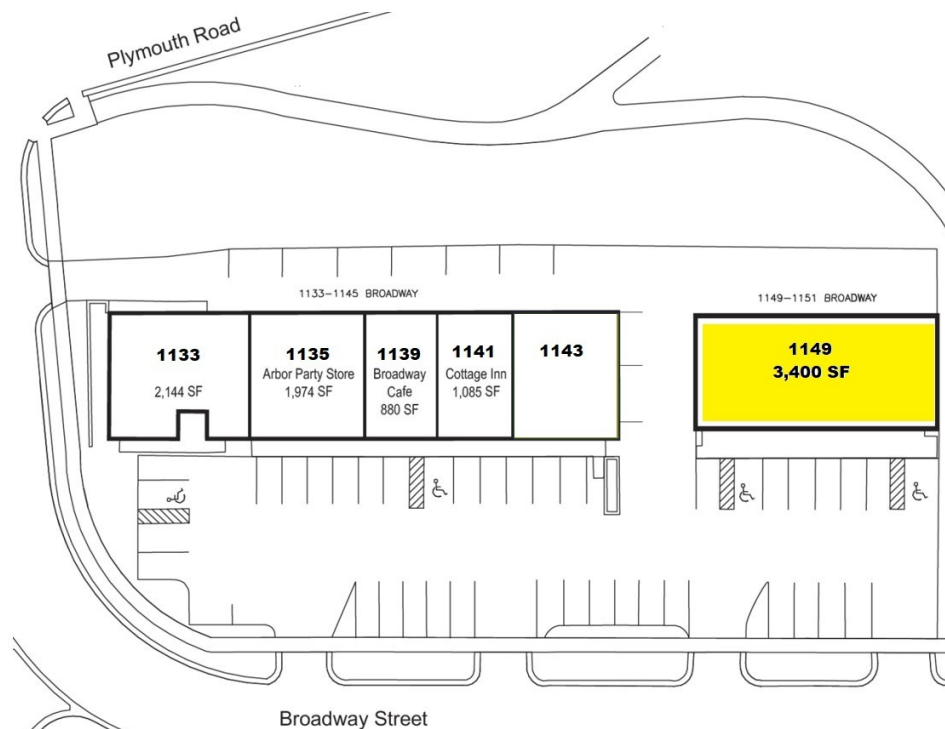
734.222.7525

RMAAS@SWISHERCOMMERCIAL.COM

SWISHERCOMMERCIAL.COM

Broadway Retail Center - Office or Retail Building

1149 BROADWAY, ANN ARBOR, MI 48105



***Building
relationships.***

208 East Washington Street Ann Arbor, MI 48104

734.663.0501

Randy Maas

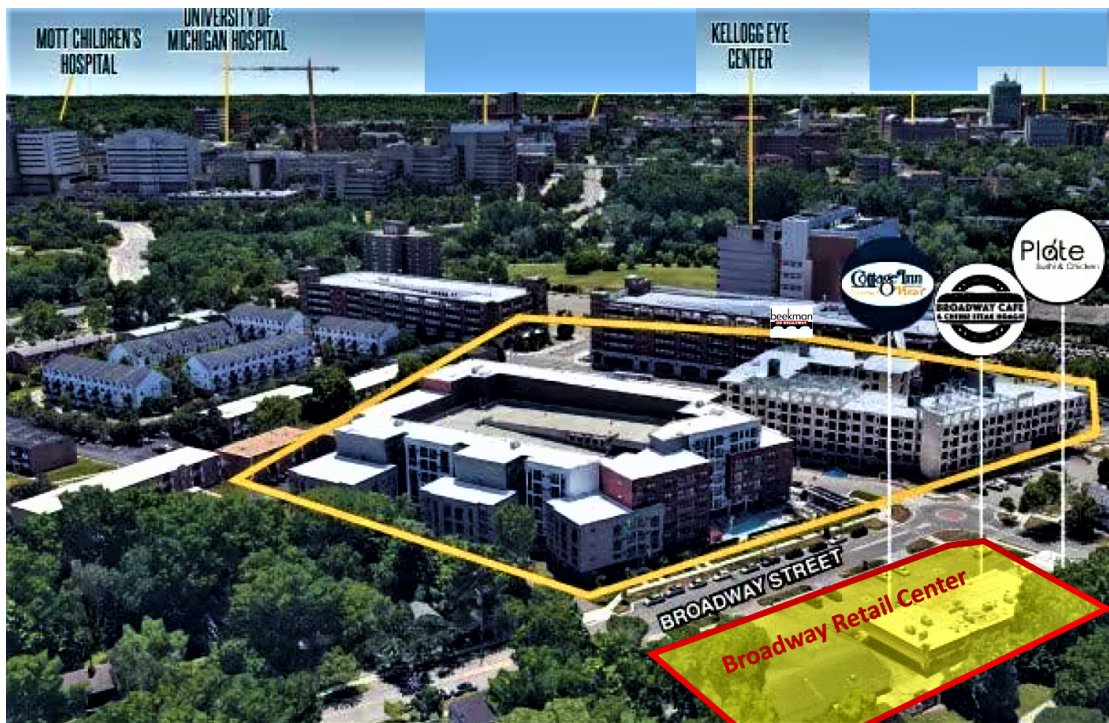
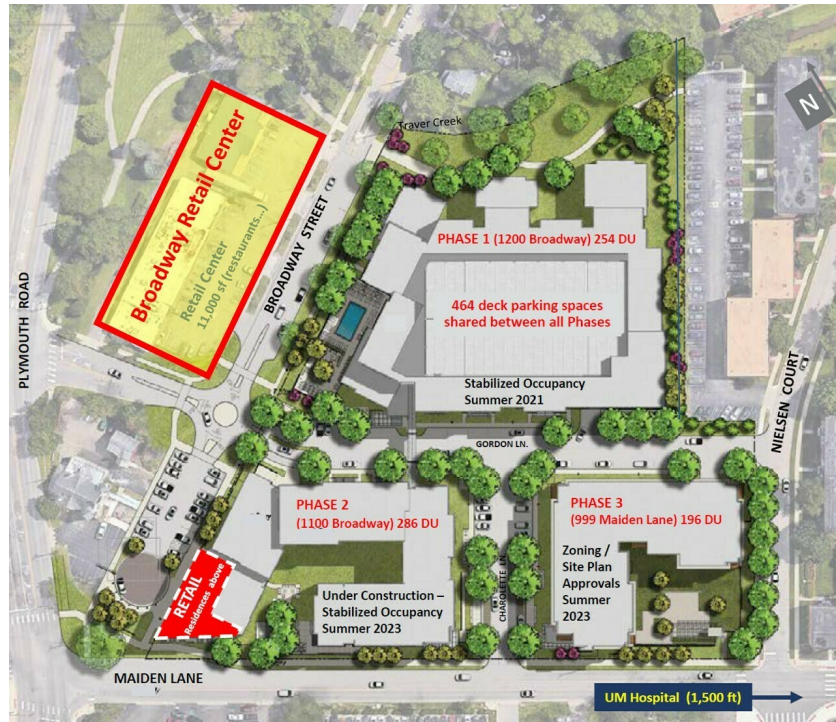
734.222.7525

RMAAS@SWISHERCOMMERCIAL.COM

SWISHERCOMMERCIAL.COM

Broadway Retail Center - Office or Retail Building

1149 BROADWAY, ANN ARBOR, MI 48105



***Building
relationships.***

208 East Washington Street Ann Arbor, MI 48104

734.663.0501

Randy Maas

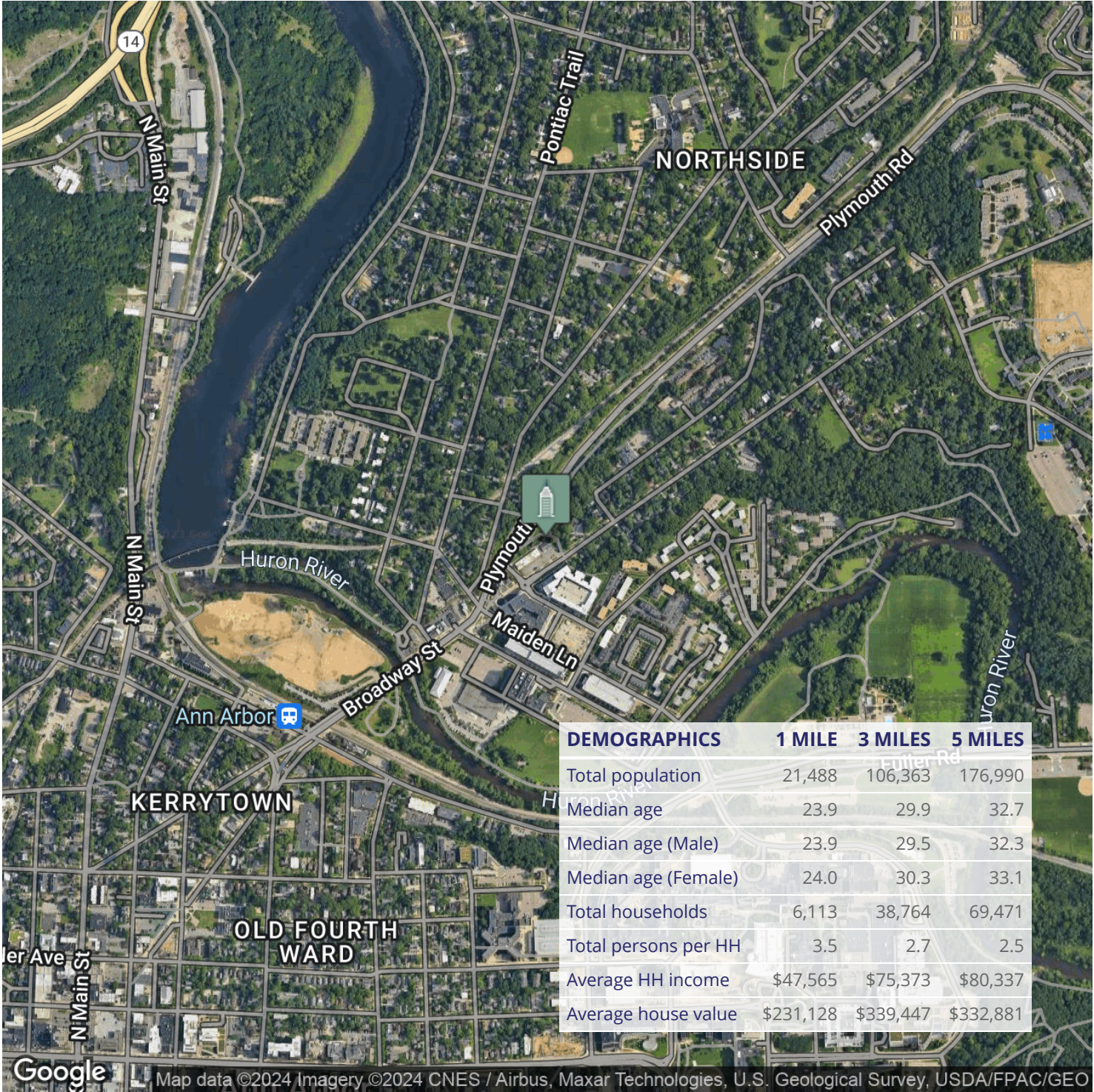
734.222.7525

RMAAS@SWISHERCOMMERCIAL.COM

SWISHERCOMMERCIAL.COM

Broadway Retail Center - Office or Retail Building

1149 BROADWAY, ANN ARBOR, MI 48105



Building relationships.