



 **JLL** SEE A BRIGHTER WAY

For lease/ sale

Class A office space available
in a premier medical/office
park in West Des Moines

2,498 RSF - 5,309 RSF

6601 Westown Pkwy
West Des Moines, Iowa 50266

Property specifications

Availability: 2,498 RSF – 5,309 RSF

- Suite 120: 4,757 RSF
- Suite 140: 5,309 RSF
- Suite 235: 2,498 RSF

Available: 11/1/2026

Lease rate: \$17.00/SF NNN

Sale price: Contact broker for pricing

Est. OPEX: Available upon request

Total building SF: 46,213 SF

- Prime location in West Des Moines “Medical Mile”
- Monument signage is available

Contact broker for
additional information

jll.com/des-moines

Jones Lang LaSalle Brokerage, Inc.

Lucas Hedstrom

Vice President

+1 515 564 9269

lucas.hedstrom@jll.com

Justin Lossner, CCIM, SIOR

Senior Managing Director

+1 515 499 8679

justin.lossner@jll.com

Thomas Edwards

Associate

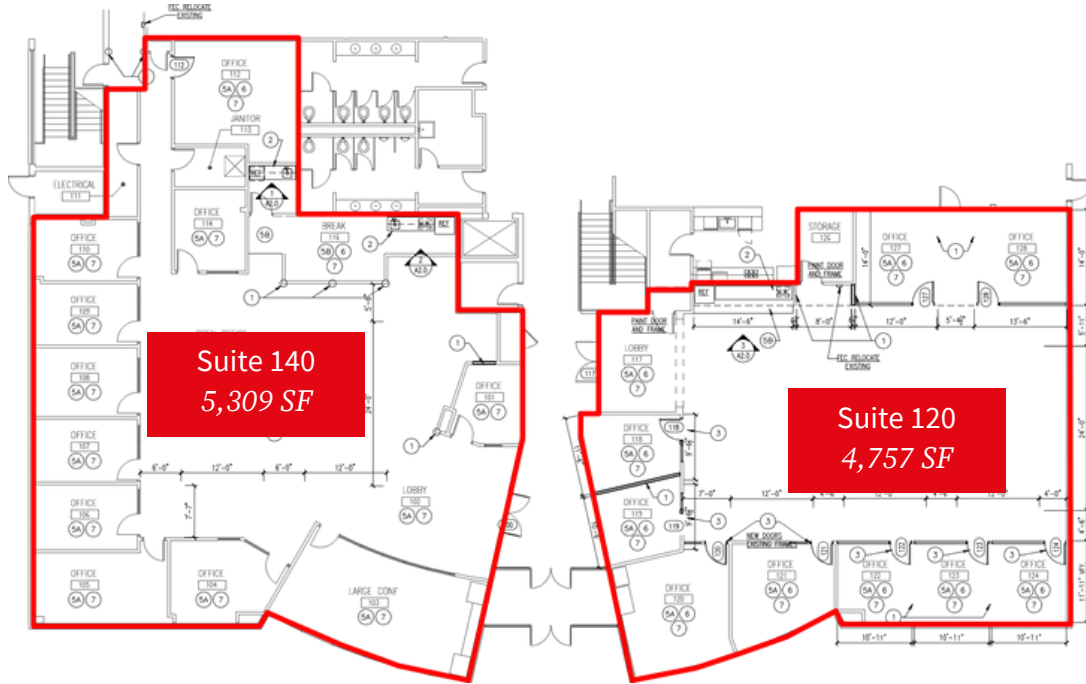
+1 515 802 4684

thomas.edwards@jll.com

Floor plans

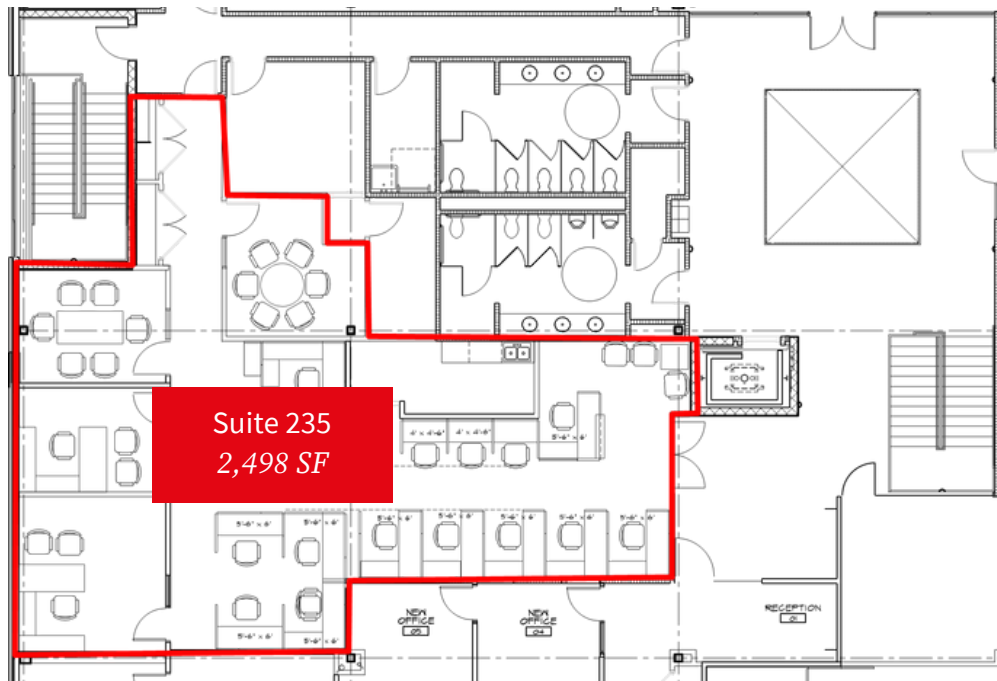
Floor 1

1st floor: 5,309 RSF | 4,757 RSF



Floor 2

2nd floor: 2,498 RSF



Images



For lease/sale

6601 Westown Pkwy | West Des Moines, Iowa 50266



Contact broker for
additional information

jll.com/des-moines

Lucas Hedstrom

Vice President

+1 515 564 9269

lucas.hedstrom@jll.com

Justin Lossner, CCIM, SIOR

Senior Managing Director

+1 515 499 8679

justin.lossner@jll.com

Thomas Edwards

Associate

+1 515 802 4684

thomas.edwards@jll.com