

24 ROLAND
STREET
CHARLESTOWN, MA

CREATIVE OFFICE & FLEX SUITES

BRICK & BEAM + ON-SITE PARKING



AVAILABLE SPACE

1st Floor (Subdividable):
Approx. ~1,700 – 3,789 SF



AVAILABLE

Immediate

LEASE TERM

Flexible



ASKING RATE

\$29/SF



Boston Realty Advisors is pleased to present **approx. ~1,700 - 3,789 SF** for lease at **24 Roland Street**. This true “Brick & Beam” building features a plentiful amount of windows allowing for an abundance of natural light, high exposed ceilings throughout, on-site parking, and is located in between 2 of Boston’s fastest growing submarkets.

BUILDING HIGHLIGHTS



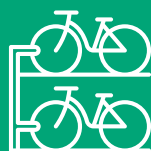
AVAILABLE BASEMENT
SPACE/STORAGE



AVAILABLE
ON-SITE PARKING



LOADING DOCK
ACCESS



BIKE
STORAGE/RACK

CONNECTIVITY



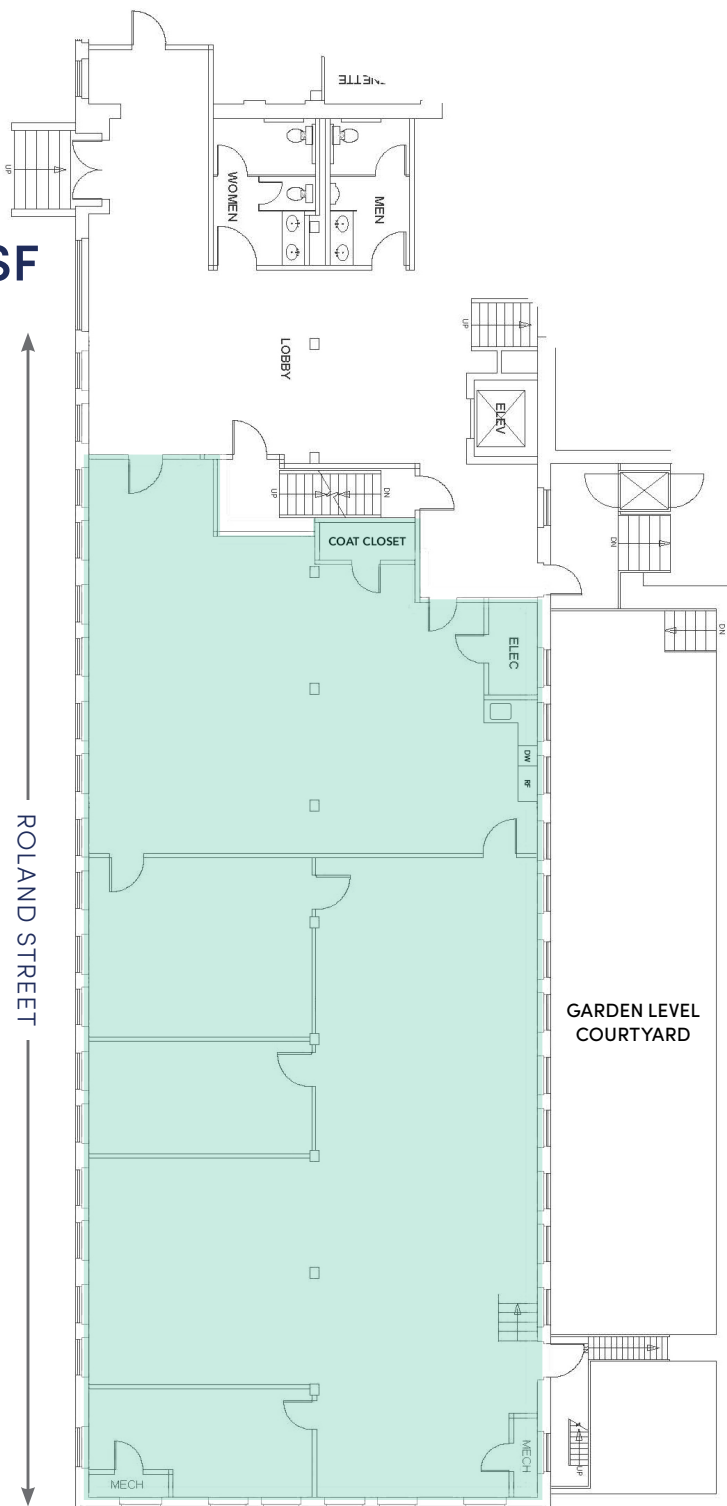
- COMCAST
- VERIZON PHONE



1ST FLOOR (SUBDIVIDABLE)

Approx. ~1,700 - 3,789 SF

*Plan not to scale.



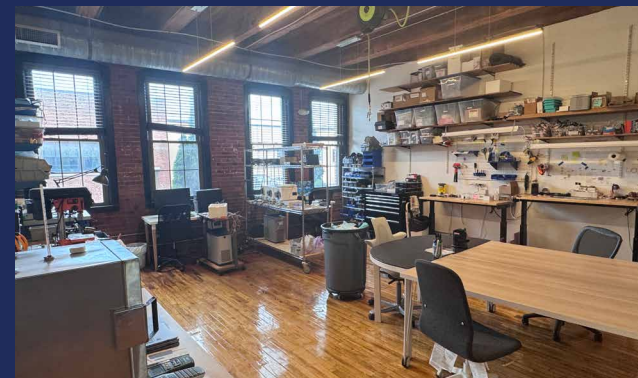
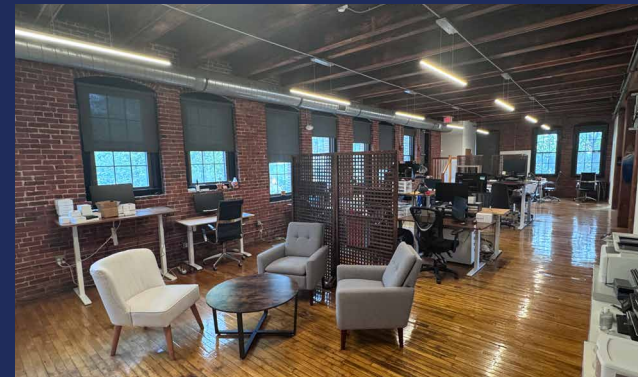
**11+ FT
CEILING HEIGHT**



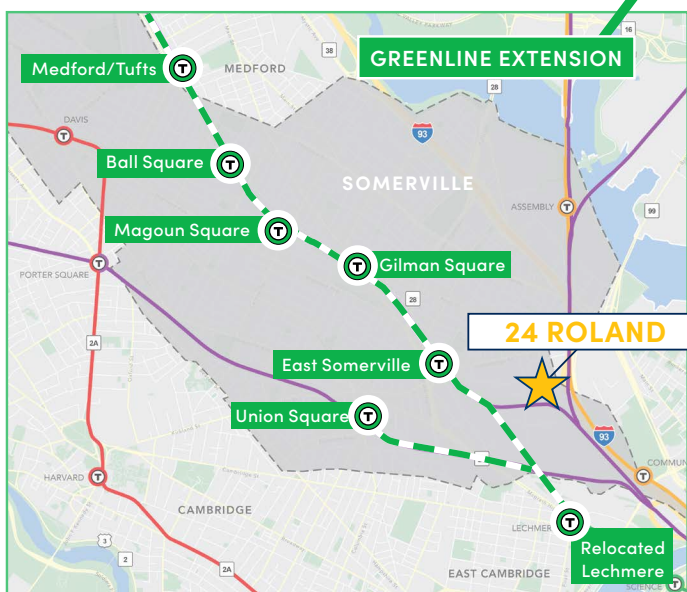
**BEAUTIFUL EXPOSED
BRICK & BEAM
THROUGHOUT**



**36 WINDOWS:
ABUNDANCE OF
NATURAL LIGHT**



LOCATION



4 MIN WALK TO MBTA'S SULLIVAN SQ.
- ORANGE LINE & BUS ROUTES



3 MINS - THE SCHRAFFT CENTER
5 MINS - ASSEMBLY SQUARE
5 MINS - NORTH STATION
11 MINS - HARVARD SQUARE
12 MINS - TO ROUTE 128

JUSTIN D. HARLOW
Managing Director
617.850.9613
jharlow@bradvisors.com

ALEKSIA BULKU
Associate
617.850.9665
abulku@bradvisors.com

 **Boston Realty Advisors**

136 Newbury Street | Boston, MA 02116
617.375.7900 | BRAdvisors.com

© Copyright Boston Realty Advisors. All rights reserved. The information contained here has been obtained through sources deemed reliable but cannot be guaranteed as to its accuracy. Any information of special interest should be obtained through independent verification.