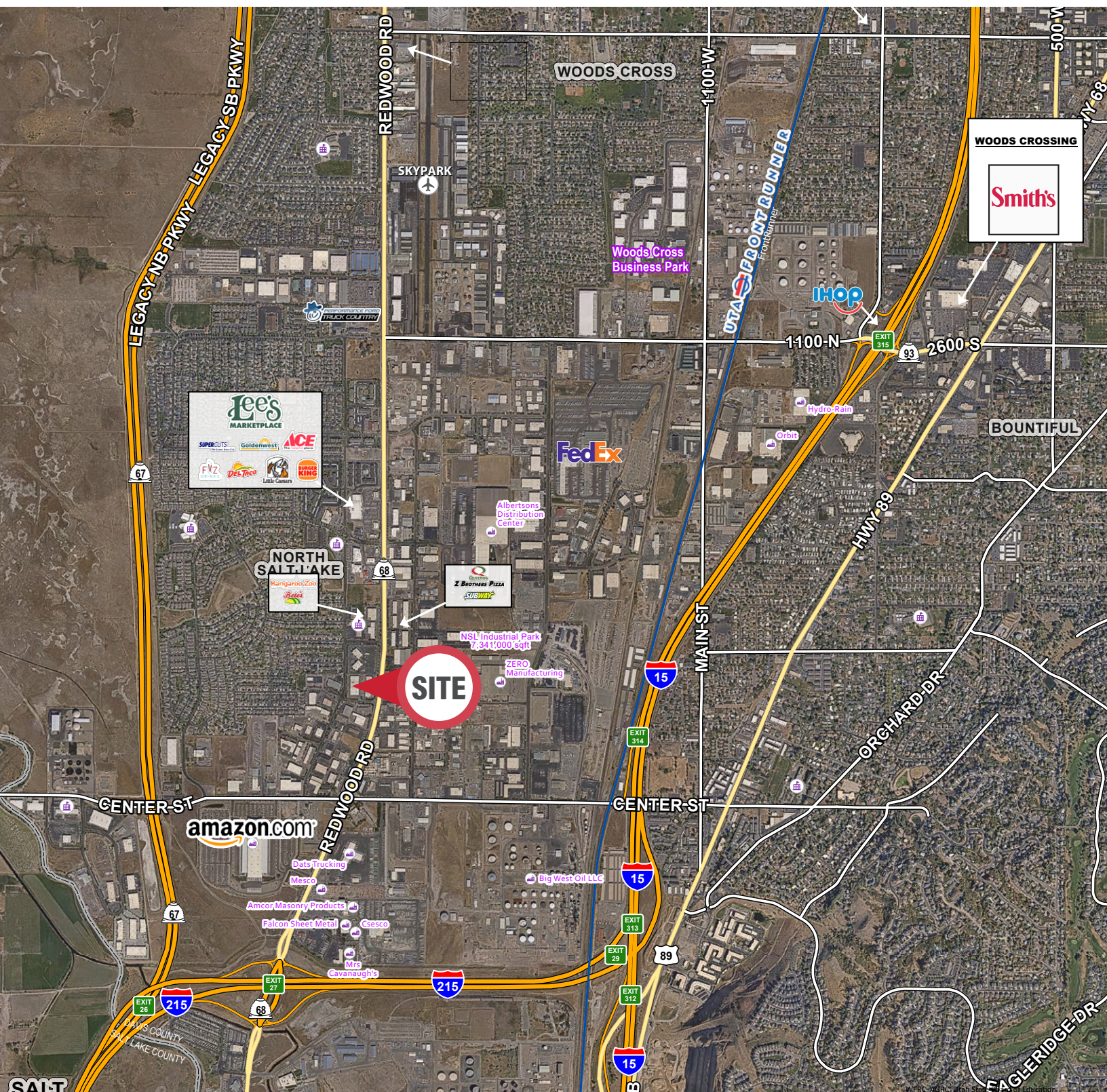


CUTLER SMALL BAY INDUSTRIAL/FLEX

230 North Cutler Drive | North Salt Lake, UT 84054

CUTLER SMALL BAY INDUSTRIAL/FLEX

230 North Cutler Drive | North Salt Lake, UT 84054



FOR LEASE

Unit B \$1.00 PSF NNN

- Total: 1,000 SF
- Buildout: Carpeted Space
- Restroom: One (1) Bathroom

Unit D \$1.20 PSF NNN

- Total: 1,000 SF
- Restroom: One (1)
- Storage: One (1) Storage Closet
- Loading: One (1) 10' x 14' Grade-Level Door

Property Highlights

- 18' Clear Height
- Fire Sprinkler System
- LED Lighting
- Temperature Controlled Units
- Access: Quick Access to I-15, I-215, Redwood Road and Legacy Parkway
- Location: Located in the Highly Desirable North Salt Lake Sub-Market

Contact

SKYLER PETERSON, SIOR Executive Vice President m 801.656.7354 speterson@legendcommercial.com	TRE BOURDEAUX, SIOR Vice President m 801.824.0397 tbourdeaux@legendcommercial.com	PARKER TAGGART Senior Associate m 801.928.1815 ptaggart@legendcommercial.com
--------------------------------------------------------------------------------------------------------------	---------------------------------------------------------------------------------------------------	----------------------------------------------------------------------------------------------



Contact

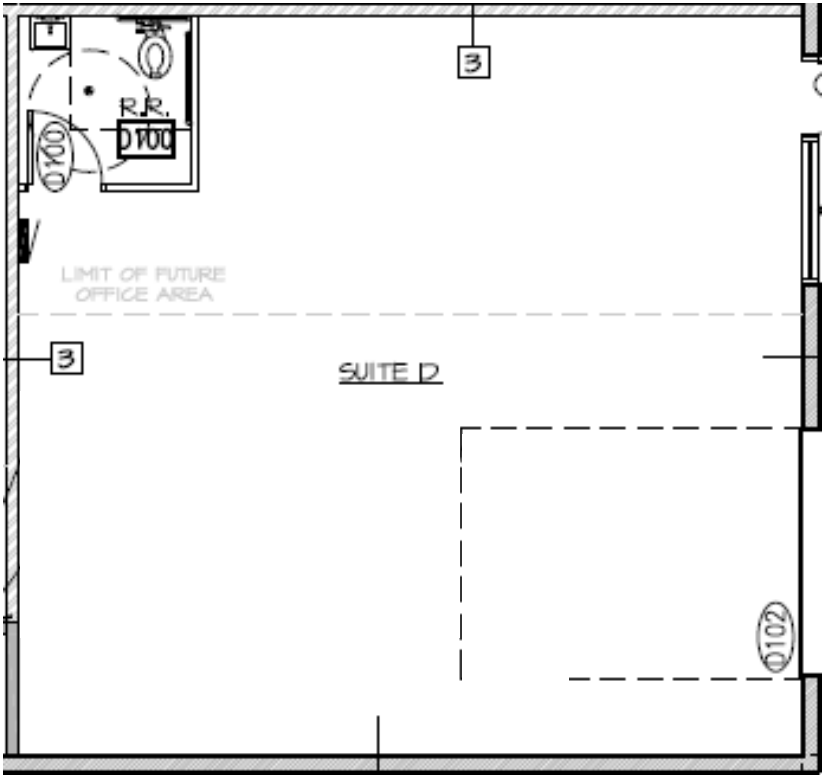
SKYLER PETERSON, SIOR Executive Vice President m 801.656.7354 speterson@legendcommercial.com	TRE BOURDEAUX, SIOR Vice President m 801.824.0397 tbourdeaux@legendcommercial.com	PARKER TAGGART Senior Associate m 801.928.1815 ptaggart@legendcommercial.com
--------------------------------------------------------------------------------------------------------------	---------------------------------------------------------------------------------------------------	----------------------------------------------------------------------------------------------



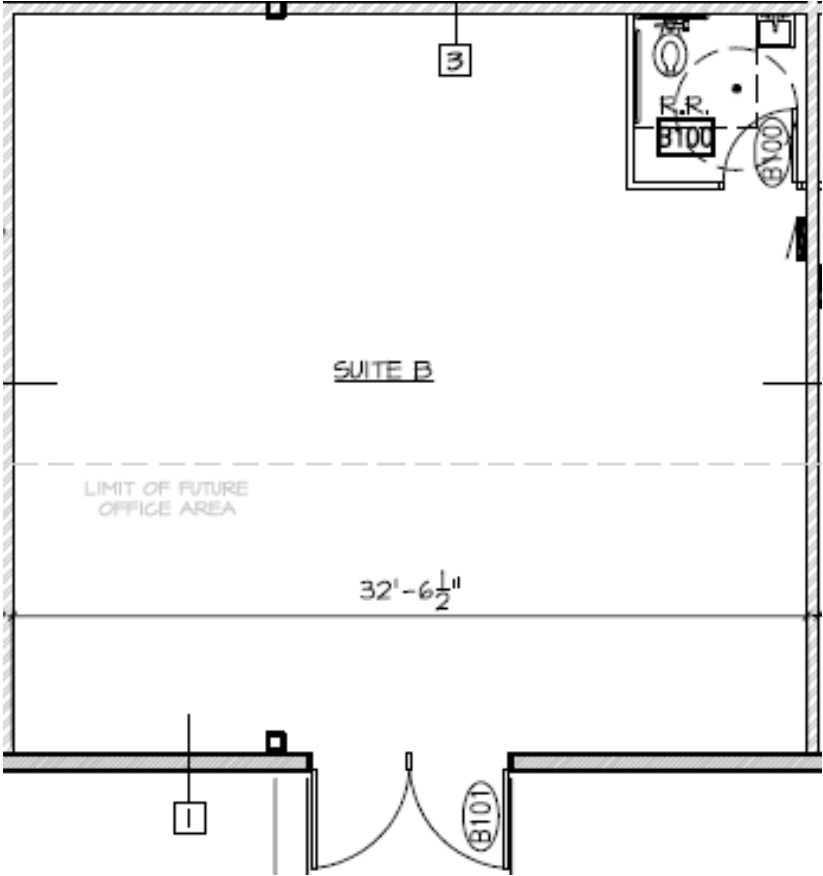
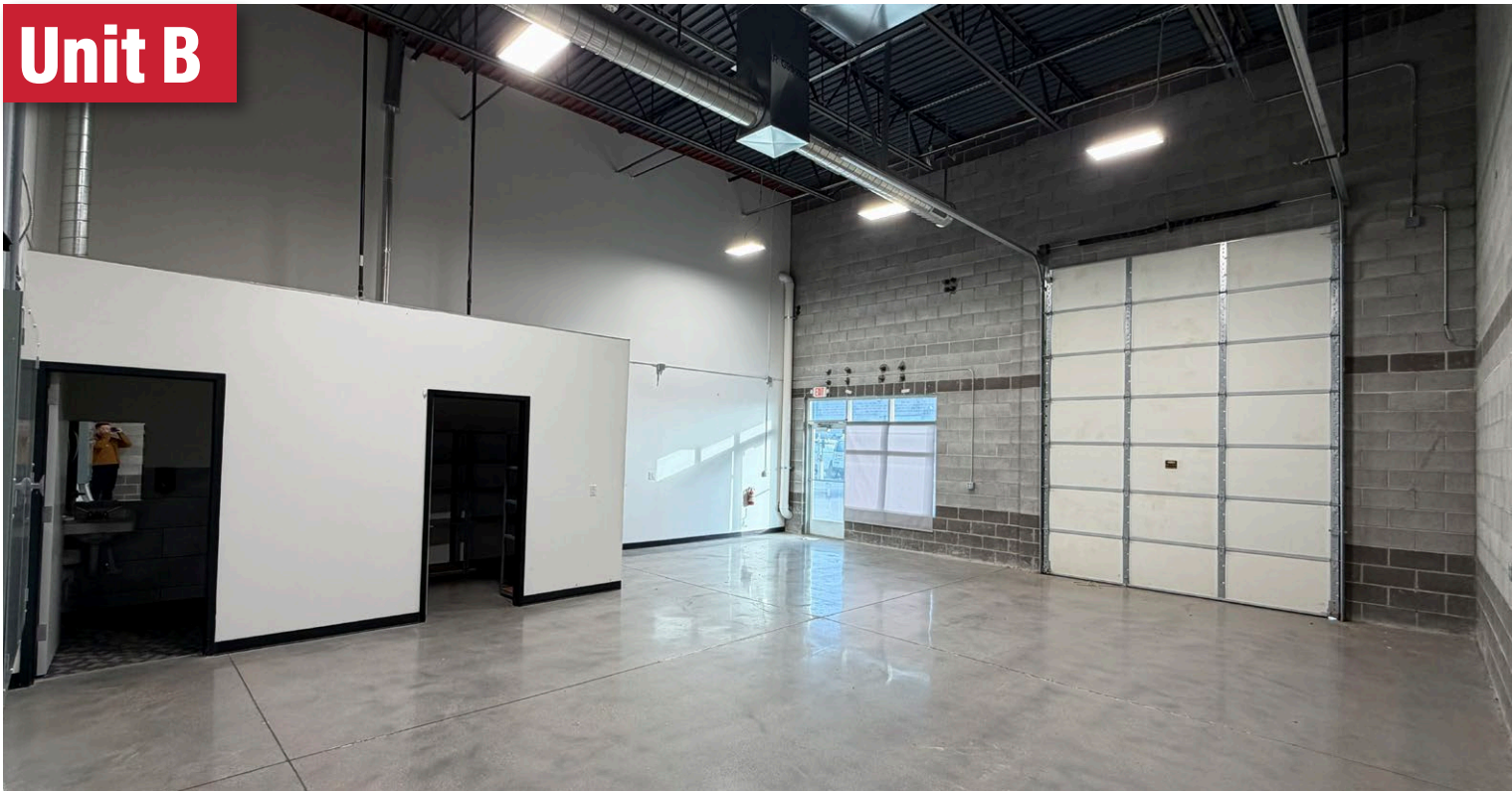
CUTLER SMALL BAY INDUSTRIAL/FLEX

230 North Cutler Drive | North Salt Lake, UT 84054

Unit D



Unit B



Contact

SKYLER PETERSON, SIOR
Executive Vice President
m 801.656.7354
speterson@legendcommercial.com

TRE BOURDEAUX, SIOR
Vice President
m 801.824.0397
tbourdeaux@legendcommercial.com

PARKER TAGGART
Senior Associate
m 801.928.1815
ptaggart@legendcommercial.com



801.930.6750 | www.legendcommercial.com
2180 S 1300 E, Suite 240 | Salt Lake City, UT 84106

Contact

SKYLER PETERSON, SIOR
Executive Vice President
m 801.656.7354
speterson@legendcommercial.com

TRE BOURDEAUX, SIOR
Vice President
m 801.824.0397
tbourdeaux@legendcommercial.com

PARKER TAGGART
Senior Associate
m 801.928.1815
ptaggart@legendcommercial.com



801.930.6750 | www.legendcommercial.com
2180 S 1300 E, Suite 240 | Salt Lake City, UT 84106