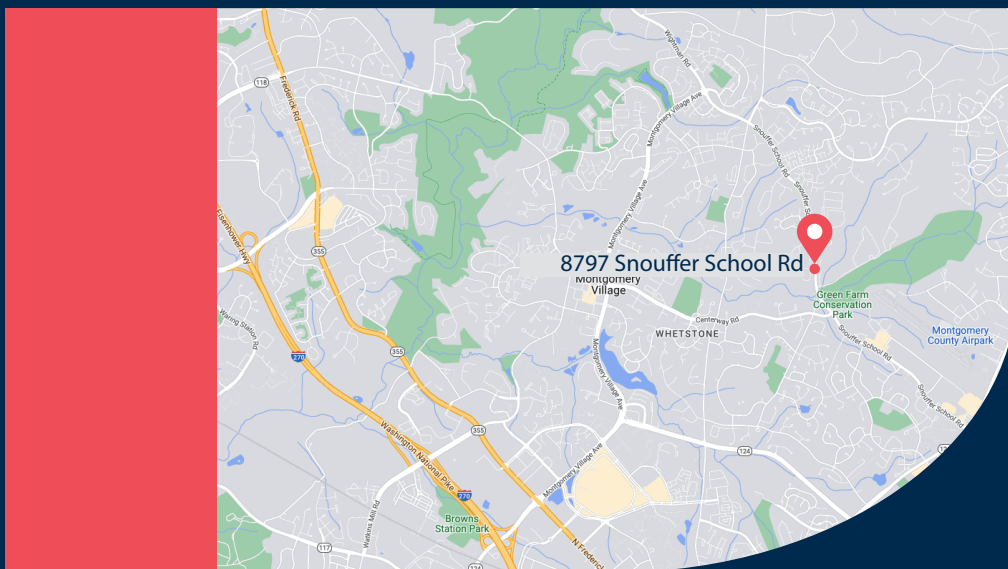




Reserve Business Park

8787 Snouffer School Rd, Gaithersburg, MD 20879

Superior Class A Project Located in Montgomery County



Specifications

21,892 sq. ft.
AVAILABLE

2016
YEAR BUILT

24'
CLEAR HEIGHT

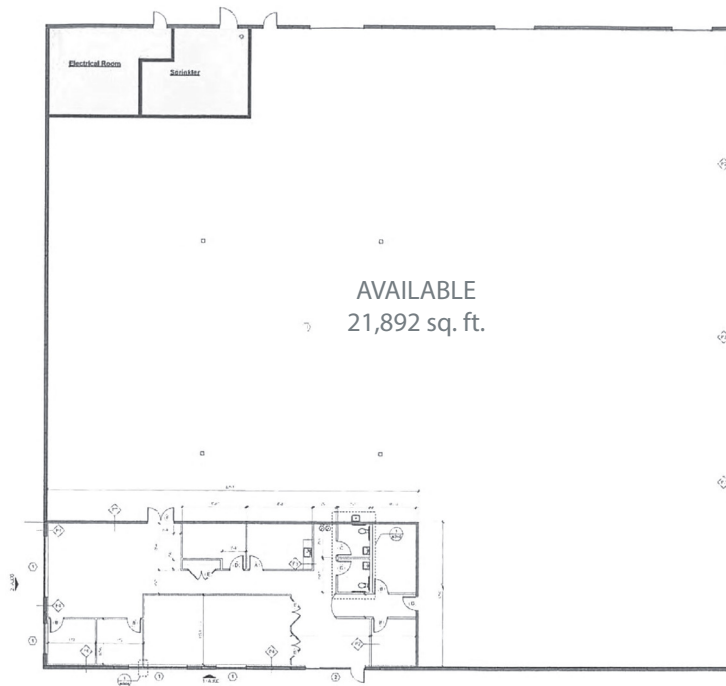
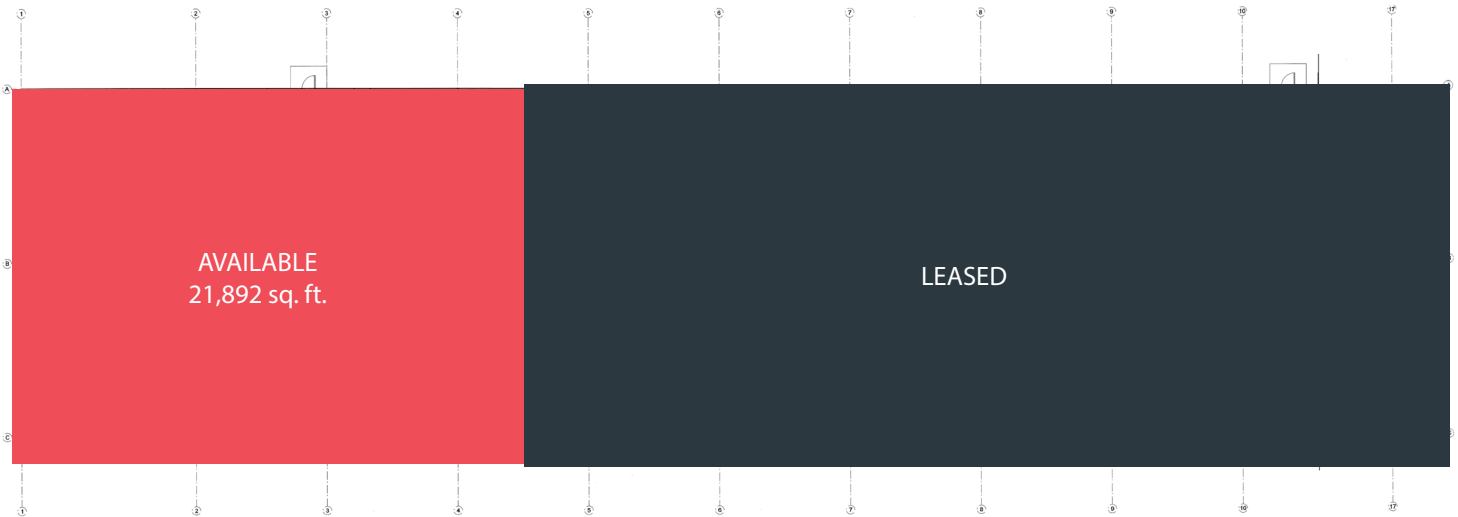
40'w x 48'd
COLUMN SPACING

1 RAMPED
1 DOCK DOOR (plus potential to add 1 more)

1.66/1,000 sq. ft.
AUTO PARKING

170'
TRUCK COURT

IL
ZONING



Contacts

NEWMARK

Brian Kruger
D 410.625.4211
brian.kruger@nmrk.com

Thomas Hinder
D 410.844.4010
thomas.hinder@nmrk.com

Erik Evans
D 410.844.4003
erik.evans@nmrk.com

Peyton Murray
D 404.941.8558
peyton.murray@brookfieldproperties.com