

640 Matthews - Mint Hill Rd. Suites E/F

AVAILABLE

Industrial/Flex (6,500 SF)

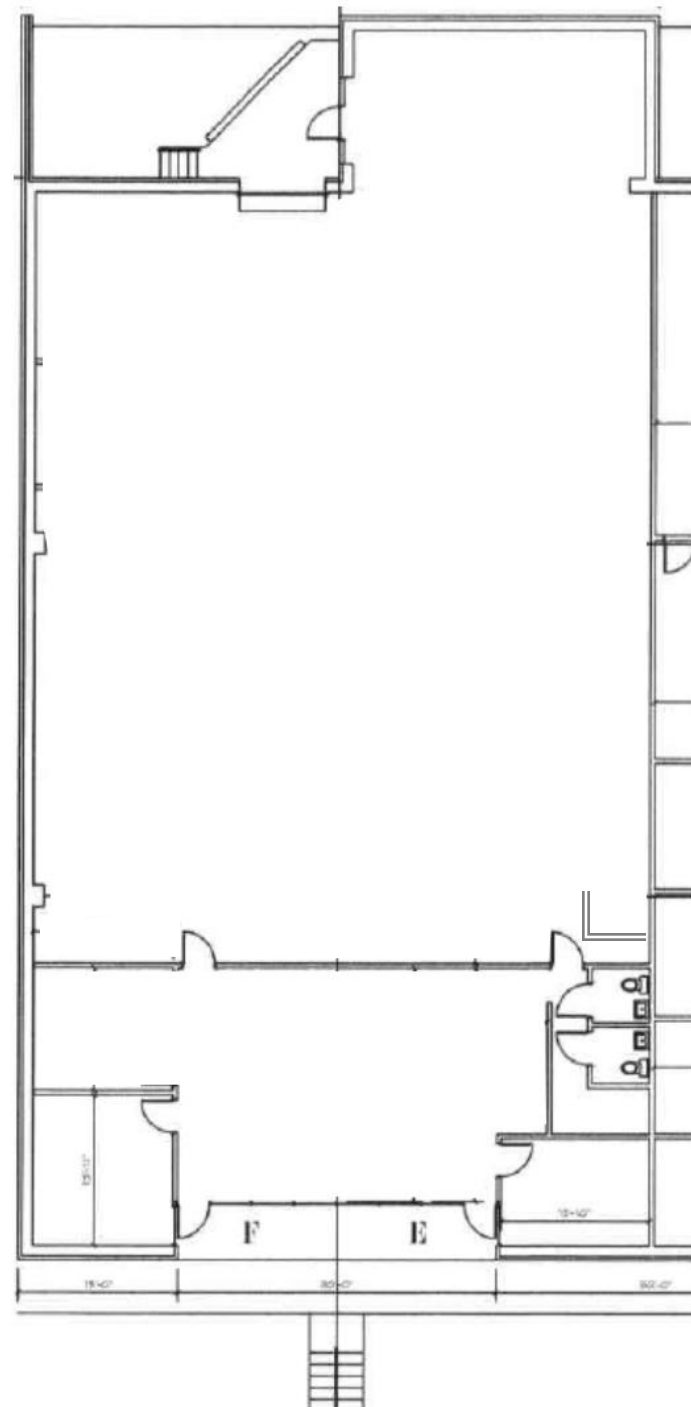
- End Cap Unit
- Dedicated Parking Area
- Warehouse +/-4,594 SF
- HVAC Warehouse
- Loading Dock
- Private Offices



Floor Plan



TOWER
PROPERTY GROUP



For Information Please Contact:

Matthew C. Mielke

Vice President

C: (704) 564-6266

O: (704) 508-9099

mmielke@towerpg.com



TOWER
PROPERTY GROUP

www.TOWERPG.com

124 W John St. Suite 101 | Matthews, NC 28105