

12-10-33

TR 12-0488835

12-10-33

BY: SANDS SURVEYING, INC.
1931 THIRD AVENUE EAST
KALISPELL, MT. 59901
PHONE: 838-6748
DATE: JUNE 15, 2000

JOB NO. 095304 DWG. #57004
FOR: GRENW D. LEE
OWNER: GRENW D. LEE LIVING TRUST

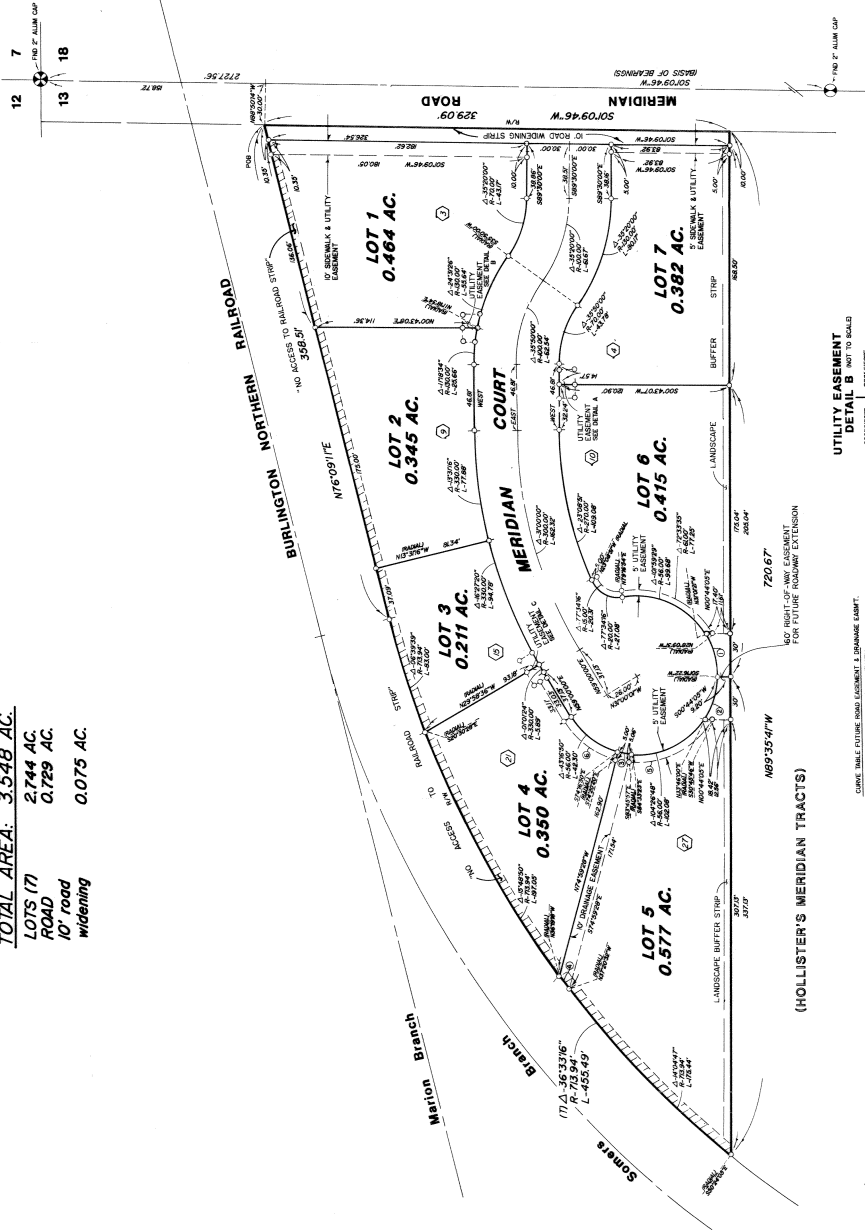
PLAT OF LEE'S MERIDIAN BUSINESS PARK A SUBDIVISION IN THE NE1/4NE1/4 SEC. 13, T.28N., R.22W., PM.M., FLATHEAD COUNTY, MONTANA

TOTAL AREA: 3.548 AC.
LOTS (7)
ROAD
IC Road
widening



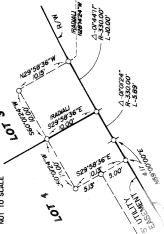
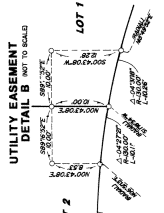
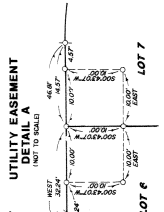
LEGEND

- ⊗ SECTION CORNER (AS NOTED)
- ⊙ 1/4 CORNER (AS NOTED)
- SET POINTS - REBAR WITH 1/4" PLASTIC CAP - STAMPED
- ADDRESS



CURVE TABLE FUTURE ROAD EASEMENT L. LINDANE EASEMENT.

NO.	BEARING	LENGTH
1	S 72° 32' 30" W	31.74
2	S 72° 32' 30" W	94.00
3	S 72° 32' 30" W	94.00
4	S 72° 32' 30" W	94.00
5	S 72° 32' 30" W	94.00
6	S 72° 32' 30" W	94.00
7	S 72° 32' 30" W	94.00
8	S 72° 32' 30" W	94.00
9	S 72° 32' 30" W	94.00
10	S 72° 32' 30" W	94.00
11	S 72° 32' 30" W	94.00
12	S 72° 32' 30" W	94.00
13	S 72° 32' 30" W	94.00
14	S 72° 32' 30" W	94.00
15	S 72° 32' 30" W	94.00
16	S 72° 32' 30" W	94.00
17	S 72° 32' 30" W	94.00
18	S 72° 32' 30" W	94.00
19	S 72° 32' 30" W	94.00
20	S 72° 32' 30" W	94.00
21	S 72° 32' 30" W	94.00
22	S 72° 32' 30" W	94.00
23	S 72° 32' 30" W	94.00
24	S 72° 32' 30" W	94.00
25	S 72° 32' 30" W	94.00
26	S 72° 32' 30" W	94.00
27	S 72° 32' 30" W	94.00
28	S 72° 32' 30" W	94.00
29	S 72° 32' 30" W	94.00
30	S 72° 32' 30" W	94.00
31	S 72° 32' 30" W	94.00
32	S 72° 32' 30" W	94.00
33	S 72° 32' 30" W	94.00
34	S 72° 32' 30" W	94.00
35	S 72° 32' 30" W	94.00
36	S 72° 32' 30" W	94.00
37	S 72° 32' 30" W	94.00
38	S 72° 32' 30" W	94.00
39	S 72° 32' 30" W	94.00
40	S 72° 32' 30" W	94.00
41	S 72° 32' 30" W	94.00
42	S 72° 32' 30" W	94.00
43	S 72° 32' 30" W	94.00
44	S 72° 32' 30" W	94.00
45	S 72° 32' 30" W	94.00
46	S 72° 32' 30" W	94.00
47	S 72° 32' 30" W	94.00
48	S 72° 32' 30" W	94.00
49	S 72° 32' 30" W	94.00
50	S 72° 32' 30" W	94.00
51	S 72° 32' 30" W	94.00
52	S 72° 32' 30" W	94.00
53	S 72° 32' 30" W	94.00
54	S 72° 32' 30" W	94.00
55	S 72° 32' 30" W	94.00
56	S 72° 32' 30" W	94.00
57	S 72° 32' 30" W	94.00
58	S 72° 32' 30" W	94.00
59	S 72° 32' 30" W	94.00
60	S 72° 32' 30" W	94.00
61	S 72° 32' 30" W	94.00
62	S 72° 32' 30" W	94.00
63	S 72° 32' 30" W	94.00
64	S 72° 32' 30" W	94.00
65	S 72° 32' 30" W	94.00
66	S 72° 32' 30" W	94.00
67	S 72° 32' 30" W	94.00
68	S 72° 32' 30" W	94.00
69	S 72° 32' 30" W	94.00
70	S 72° 32' 30" W	94.00
71	S 72° 32' 30" W	94.00
72	S 72° 32' 30" W	94.00
73	S 72° 32' 30" W	94.00
74	S 72° 32' 30" W	94.00
75	S 72° 32' 30" W	94.00
76	S 72° 32' 30" W	94.00
77	S 72° 32' 30" W	94.00
78	S 72° 32' 30" W	94.00
79	S 72° 32' 30" W	94.00
80	S 72° 32' 30" W	94.00
81	S 72° 32' 30" W	94.00
82	S 72° 32' 30" W	94.00
83	S 72° 32' 30" W	94.00
84	S 72° 32' 30" W	94.00
85	S 72° 32' 30" W	94.00
86	S 72° 32' 30" W	94.00
87	S 72° 32' 30" W	94.00
88	S 72° 32' 30" W	94.00
89	S 72° 32' 30" W	94.00
90	S 72° 32' 30" W	94.00
91	S 72° 32' 30" W	94.00
92	S 72° 32' 30" W	94.00
93	S 72° 32' 30" W	94.00
94	S 72° 32' 30" W	94.00
95	S 72° 32' 30" W	94.00
96	S 72° 32' 30" W	94.00
97	S 72° 32' 30" W	94.00
98	S 72° 32' 30" W	94.00
99	S 72° 32' 30" W	94.00
100	S 72° 32' 30" W	94.00



CERTIFICATE OF PUBLICATION

WE, THE UNDERSIGNED, PROBABLY HAVING BEEN DULY SWORN, DO HEREBY CERTIFY THAT THE FOREGOING INSTRUMENT WAS READ AND EXAMINED AND THAT THE SAME IS A TRUE AND CORRECT COPY OF THE ORIGINAL AS FILED IN THE OFFICE OF THE COUNTY CLERK OF FLATHEAD COUNTY, MONTANA.

IN WITNESS WHEREOF, I HAVE HEREUNTO SET MY HAND AND SEAL AT KALISPELL, MONTANA, THIS 15TH DAY OF JUNE, 2000.

COUNTY CLERK OF FLATHEAD COUNTY, MONTANA

CERTIFICATE OF SURVIVOR

THOMAS G. SANDS 1979-5

APPROVED: _____ 2000

Examining Land Surveyor _____

STATE OF MONTANA)
COUNTY OF FLATHEAD) SS

FILED: 2000 JUN 15 10:45 AM

BY: _____

Instrument No. 20000914170

CERTIFICATE OF SURVIVOR

THOMAS G. SANDS 1979-5

APPROVED: _____ 2000

Examining Land Surveyor _____

STATE OF MONTANA)
COUNTY OF FLATHEAD) SS

FILED: 2000 JUN 15 10:45 AM

BY: _____

Instrument No. 20000914170

CERTIFICATE OF SURVIVOR

THOMAS G. SANDS 1979-5

APPROVED: _____ 2000

Examining Land Surveyor _____

STATE OF MONTANA)
COUNTY OF FLATHEAD) SS

FILED: 2000 JUN 15 10:45 AM

BY: _____

Instrument No. 20000914170

CERTIFICATE OF SURVIVOR

THOMAS G. SANDS 1979-5

APPROVED: _____ 2000

Examining Land Surveyor _____

STATE OF MONTANA)
COUNTY OF FLATHEAD) SS

FILED: 2000 JUN 15 10:45 AM

BY: _____

Instrument No. 20000914170

CERTIFICATE OF SURVIVOR

THOMAS G. SANDS 1979-5

APPROVED: _____ 2000

Examining Land Surveyor _____

STATE OF MONTANA)
COUNTY OF FLATHEAD) SS

FILED: 2000 JUN 15 10:45 AM

BY: _____

Instrument No. 20000914170

CERTIFICATE OF SURVIVOR

THOMAS G. SANDS 1979-5

APPROVED: _____ 2000

Examining Land Surveyor _____

STATE OF MONTANA)
COUNTY OF FLATHEAD) SS

FILED: 2000 JUN 15 10:45 AM

BY: _____

Instrument No. 20000914170

CERTIFICATE OF SURVIVOR

THOMAS G. SANDS 1979-5

APPROVED: _____ 2000

Examining Land Surveyor _____

STATE OF MONTANA)
COUNTY OF FLATHEAD) SS

FILED: 2000 JUN 15 10:45 AM

BY: _____

Instrument No. 20000914170

CERTIFICATE OF SURVIVOR

THOMAS G. SANDS 1979-5

APPROVED: _____ 2000

Examining Land Surveyor _____

STATE OF MONTANA)
COUNTY OF FLATHEAD) SS

FILED: 2000 JUN 15 10:45 AM

BY: _____

Instrument No. 20000914170

CERTIFICATE OF SURVIVOR

THOMAS G. SANDS 1979-5

APPROVED: _____ 2000

Examining Land Surveyor _____

STATE OF MONTANA)
COUNTY OF FLATHEAD) SS

FILED: 2000 JUN 15 10:45 AM

BY: _____

Instrument No. 20000914170

CERTIFICATE OF SURVIVOR

THOMAS G. SANDS 1979-5

APPROVED: _____ 2000

Examining Land Surveyor _____

STATE OF MONTANA)
COUNTY OF FLATHEAD) SS

FILED: 2000 JUN 15 10:45 AM

BY: _____

Instrument No. 20000914170

CERTIFICATE OF SURVIVOR

THOMAS G. SANDS 1979-5

APPROVED: _____ 2000

Examining Land Surveyor _____

STATE OF MONTANA)
COUNTY OF FLATHEAD) SS

FILED: 2000 JUN 15 10:45 AM

BY: _____

Instrument No. 20000914170

CERTIFICATE OF SURVIVOR

THOMAS G. SANDS 1979-5

APPROVED: _____ 2000

Examining Land Surveyor _____

STATE OF MONTANA)
COUNTY OF FLATHEAD) SS

FILED: 2000 JUN 15 10:45 AM

BY: _____

Instrument No. 20000914170

CERTIFICATE OF SURVIVOR

THOMAS G. SANDS 1979-5

APPROVED: _____ 2000

Examining Land Surveyor _____

STATE OF MONTANA)
COUNTY OF FLATHEAD) SS

FILED: 2000 JUN 15 10:45 AM

BY: _____

Instrument No. 20000914170

CERTIFICATE OF SURVIVOR

THOMAS G. SANDS 1979-5

APPROVED: _____ 2000

Examining Land Surveyor _____

STATE OF MONTANA)
COUNTY OF FLATHEAD) SS

FILED: 2000 JUN 15 10:45 AM

BY: _____

Instrument No. 20000914170

CERTIFICATE OF SURVIVOR

THOMAS G. SANDS 1979-5

APPROVED: _____ 2000

Examining Land Surveyor _____

STATE OF MONTANA)
COUNTY OF FLATHEAD) SS

FILED: 2000 JUN 15 10:45 AM

BY: _____

Instrument No. 20000914170

CERTIFICATE OF SURVIVOR

THOMAS G. SANDS 1979-5

APPROVED: _____ 2000

Examining Land Surveyor _____

STATE OF MONTANA)
COUNTY OF FLATHEAD) SS

FILED: 2000 JUN 15 10:45 AM

BY: _____

Instrument No. 20000914170

12-10-33
AB 888