

FOR LEASE

dell**FIVE** | E

18912-18924 Lake Drive East
Chanhassen, MN 55317

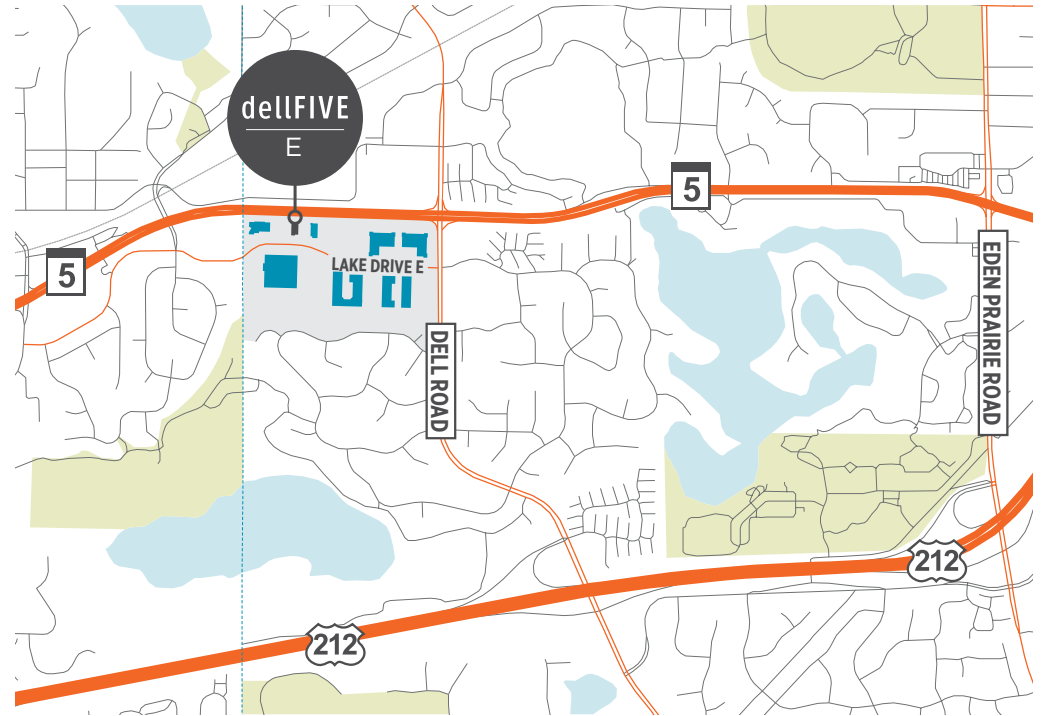


PROPERTY HIGHLIGHTS

- Owned by Link Industrial Properties
- 464,204 total SF in 9 buildings
- Single-story with plentiful parking
- Easy access to I-494 and Highway 212
- Endcap with good glassline
- Excellent Hwy 5 visibility
- Building monument signage available

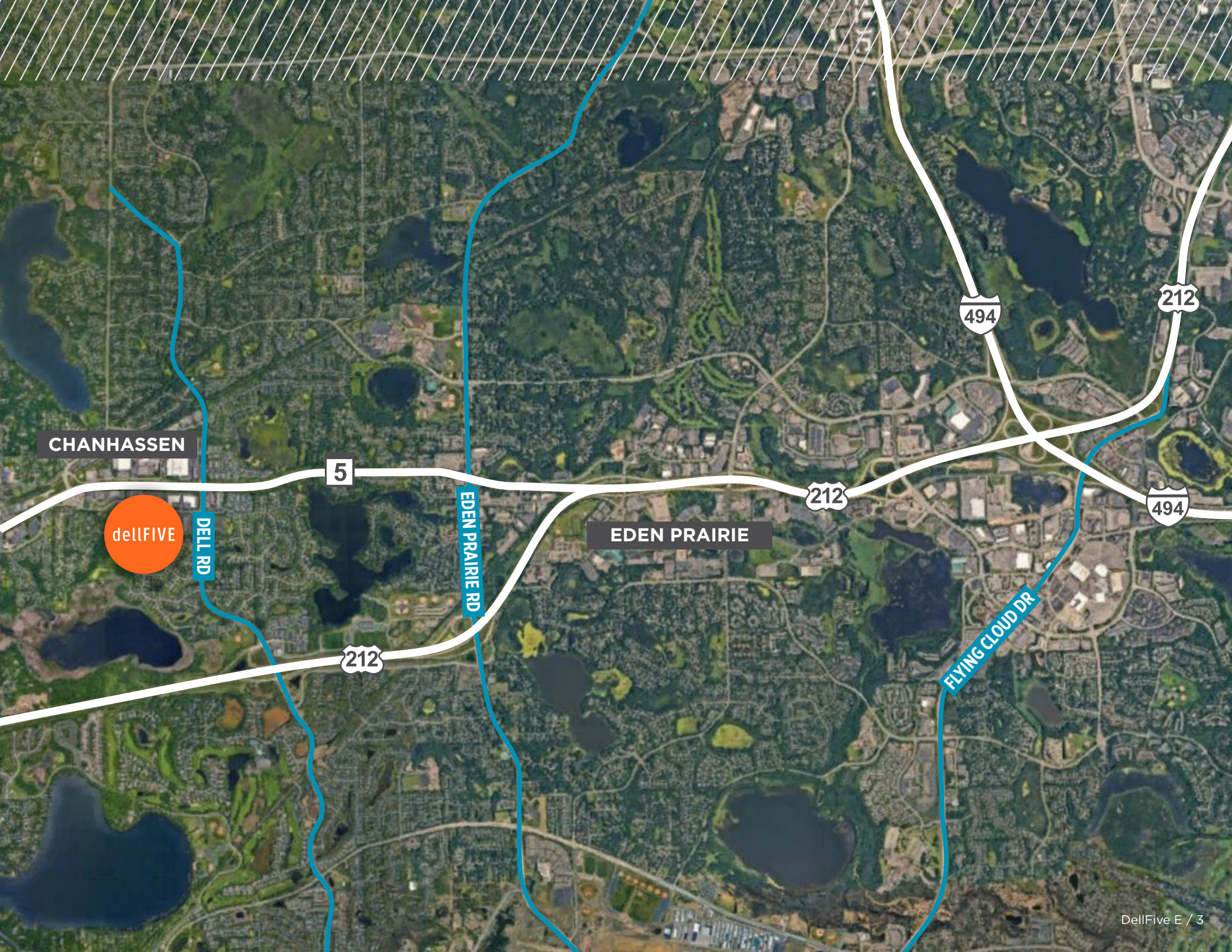
VACANCIES

SUITE	OFFICE SF
18912	4,676 SF



DellFive E : FEATURES

Address	18912 Lake Dr E, Chanhassen
Building Total SF	12,869 SF
Year Built	1998
Lease Rates	Negotiable
2022 Estimated Tax & CAM	\$3.39 PSF Tax \$4.90 PSF CAM \$8.29 PSF Total
Utilities	Utility services to be separately metered and the responsibility of tenant, along with janitorial, trash removal, etc.



CHANHASSEN

dellFIVE

DELL RD

5

EDEN PRAIRIE RD

EDEN PRAIRIE

212

494

212

494

FLYING CLOUD DR

212

4,676
SF

E

F

D

B

A

J

I

H

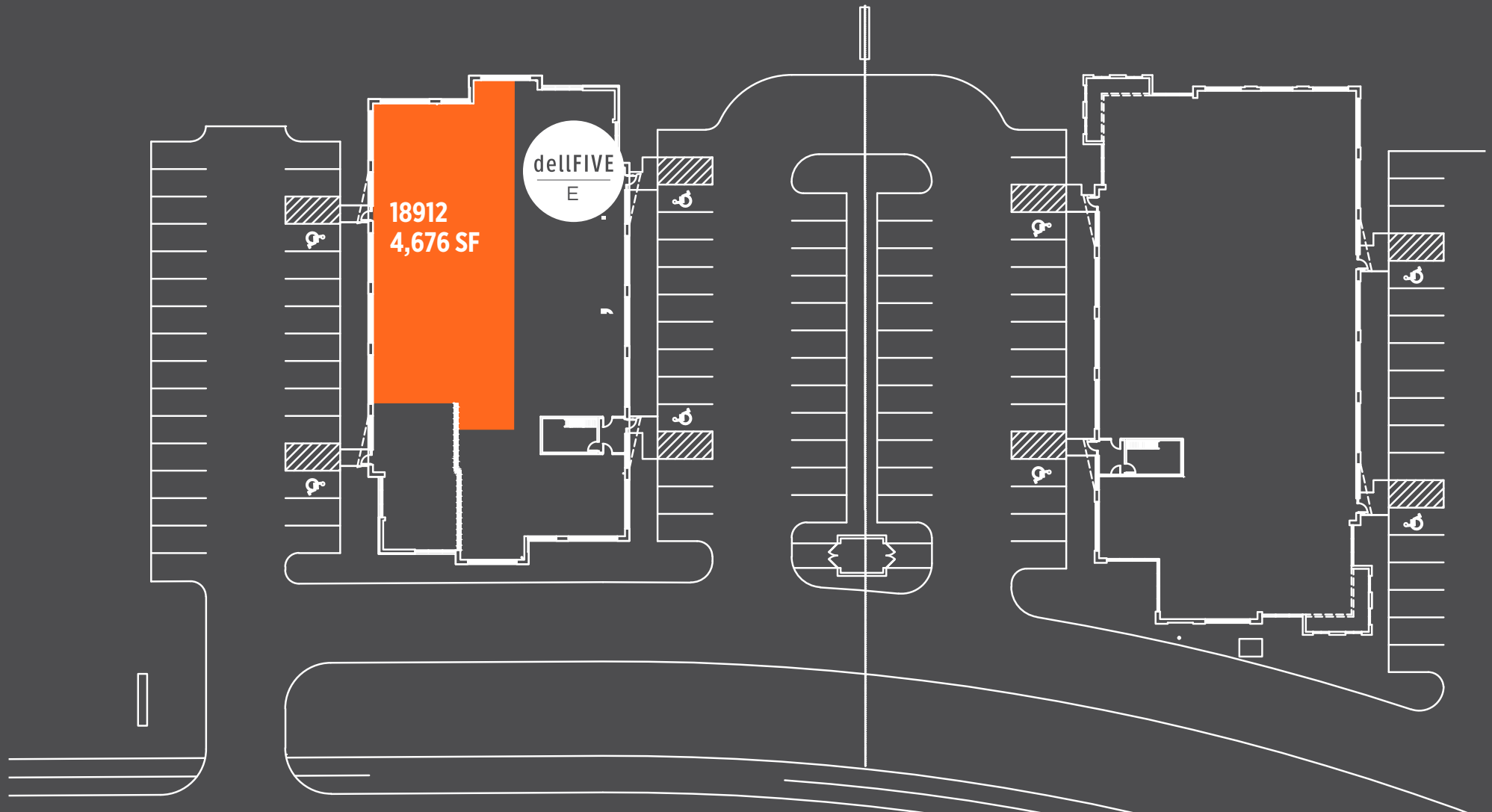
G

5

DELL ROAD

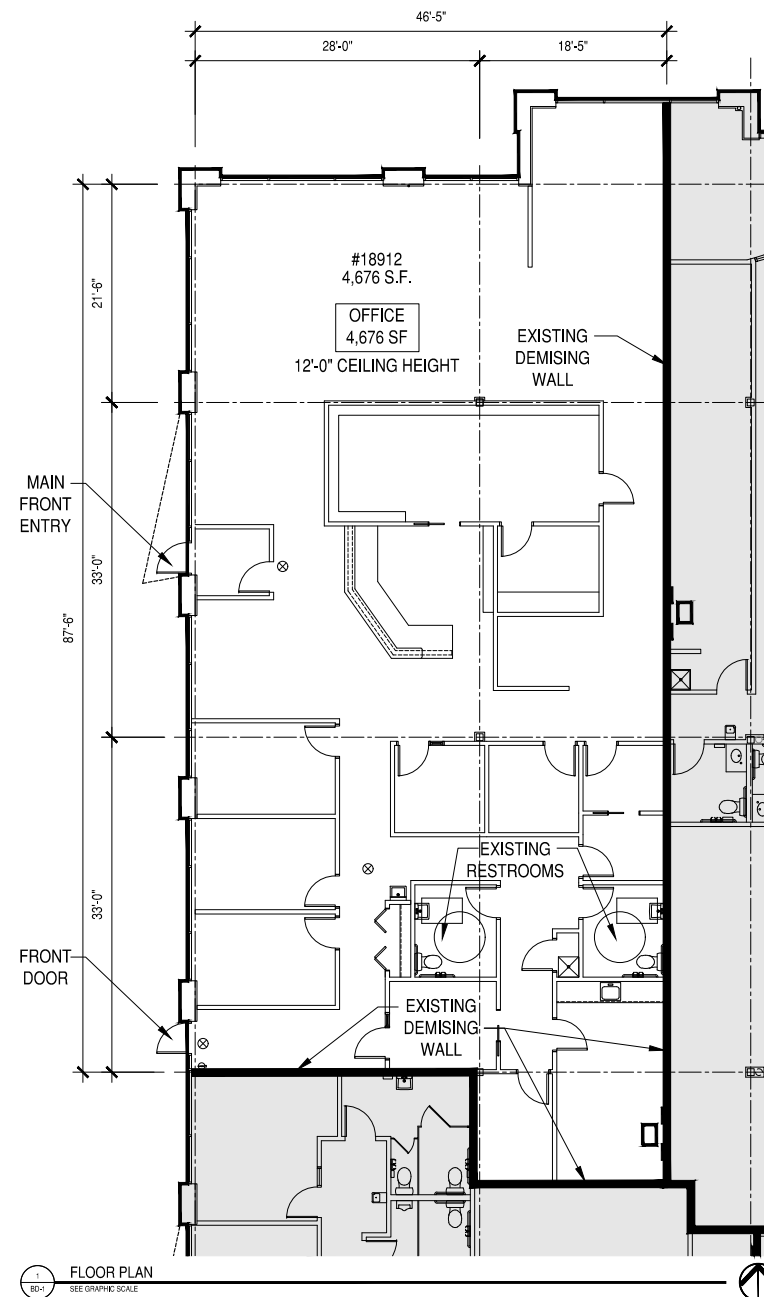
SITE PLAN

AVAILABLE : 4,676



SUITE 18912

4,676 SF OFFICE





KRIS SMELTZER

Executive Director
+1 952 837 8575
kris.smeltzer@cushwake.com

HUDSON BROTHEN

Senior Director
+1 952 893 8261
HUDSON.BROTHEN@cushwake.com

CUSHMAN & WAKEFIELD

3500 American Blvd W, Ste 200
Minneapolis, MN 55431
cushmanwakefield.com

cushmanwakefield.com



©2022 Cushman & Wakefield NO WARRANTY OR REPRESENTATION, EXPRESS OR IMPLIED, IS MADE TO THE ACCURACY OR COMPLETENESS OF THE INFORMATION CONTAINED HEREIN, AND SAME IS SUBMITTED SUBJECT TO ERRORS, OMISSIONS, CHANGE OF PRICE, RENTAL OR OTHER CONDITIONS, WITHDRAWAL WITHOUT NOTICE, AND TO ANY SPECIAL LISTING CONDITIONS IMPOSED BY THE PROPERTY OWNER(S), AS APPLICABLE. WE MAKE NO REPRESENTATION AS TO THE CONDITION OF THE PROPERTY (OR PROPERTIES) IN QUESTION.