

CAPITAL TECH CENTER

1611 N I-35E, Suite 318 | Carrollton, Texas 75006



5,432 SF FOR LEASE

PROPERTY HIGHLIGHTS

- Total SF: 5,432 SF
- 14' Clear Height
- One (1) Grade Level Door
- 100% HVAC
- Excellent Access to Major Thoroughfares



CONTACT

Walker Floyd
972.265.0141
wfloyd@holtlunsford.com

Luke Floyd
972.585.5109
lfloyd@holtlunsford.com



CAPITAL TECH CENTER

1611 N I-35E, Suite 318 | Carrollton, Texas 75006

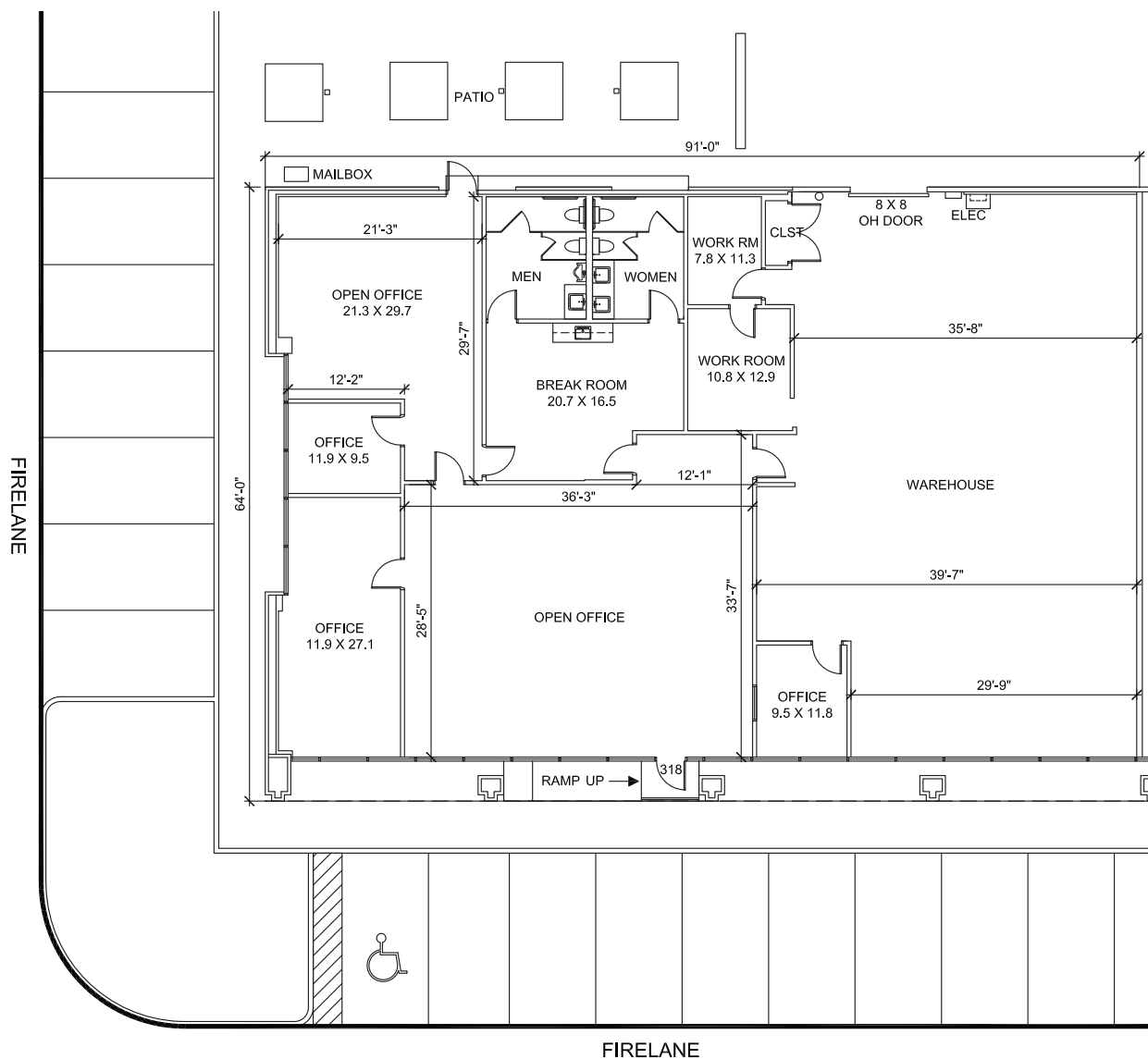
SUITE 318

FLOOR PLAN

OFFICE 2,878 SF

WAREHOUSE 2,554 SF

TOTAL AREA 5,432 SF



CONTACT



Walker Floyd

972.265.0141

wfloyd@holtlunsford.com

Luke Floyd

972.585.5109

lfloyd@holtlunsford.com

