

For Sale

NAIDESCO

**1626 Pattern Drive,
St. Louis, MO 63138**



Property Highlights



For Sale
6,944 SF on 2.13 AC



**Former Bank with 5
Drive-Thru Lanes**



Easy Access
1.5M from I-270



Sale Price:
\$425,000

For more information, please contact:



Peter Sheahan

d (314) 994 - 4081
c (314) 420 - 3095
psheahan@naidesco.com



Meghan Donovan

d (314) 994 - 2320
c (314) 810 - 9213
mdonovan@naidesco.com

NAIDESCO

8112 Maryland Ave, Suite 300
St. Louis, MO 63105
(314) 994 - 4800
naidesco.com

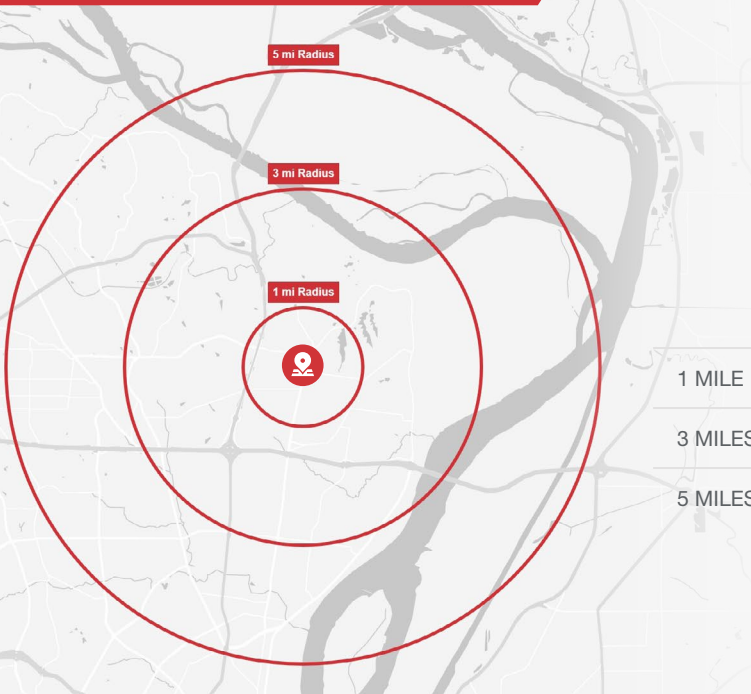
Property Features

- 6,944 SF building on 2.13 AC
- Former bank with 5 drive-thru lanes
- Zoned C-3 Shopping District
- Located 1.5 miles north of 270 & Bellefontaine Road interchange

 **Sale Price: \$425,000**



Demographics



POPULATION

DAYTIME
POPULATION

AVG. HH
INCOME

HOUSEHOLDS

1 MILE

11,714

4,157

\$72,812

4,653

3 MILES

52,556

25,391

\$78,042

20,275

5 MILES

116,813

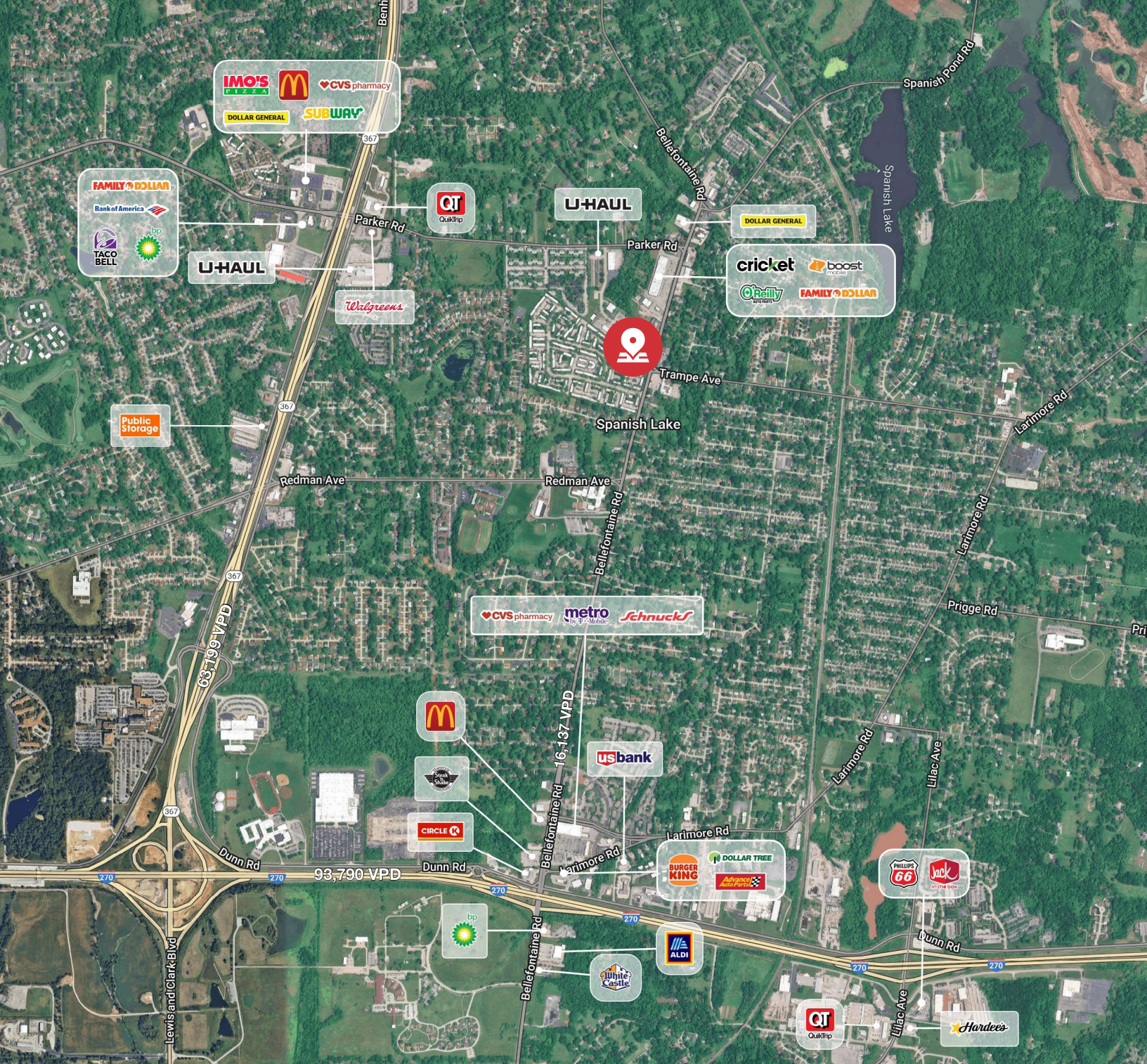
60,916

\$76,975

47,003

Site





Peter Sheahan

d (314) 994 - 4081
c (314) 420 - 3095
psheahan@naidesco.com



Meghan Donovan

d (314) 994 - 2320
c (314) 810 - 9213
mdonovan@naidesco.com



NAIDESCO

8112 Maryland Ave, Suite 300
St. Louis, MO 63105
(314) 994 - 4800
naidesco.com