



1500
CITY WEST



 **TRANSWESTERN**[®]

 **BioUrja**

AT A GLANCE

- » 191,281 RSF
- » 10 STORIES
- » 4.0/1,000 PARKING RATIO



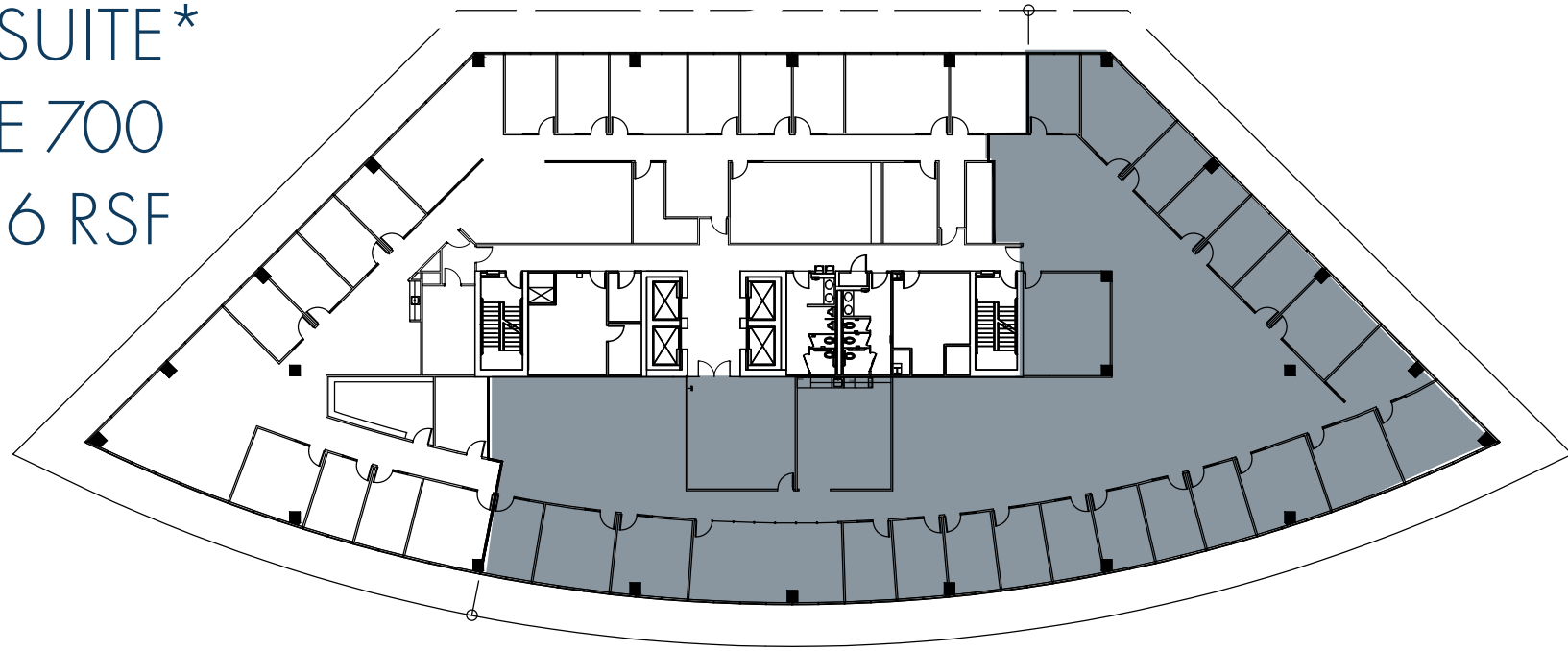
BUILDING HIGHLIGHTS

- » NEWLY RENOVATED LOBBY
- » ONSITE MANAGEMENT & SECURITY
- » CONVENIENT ON-SITE CAFE
- » LOCAL OWNERSHIP
- » PROMINENT LOCATION
- » COMPETITIVE RENTAL RATES
- » 11,536 RSF SPEC SUITE
- » CONFERENCING & FITNESS CENTER, COMING SOON



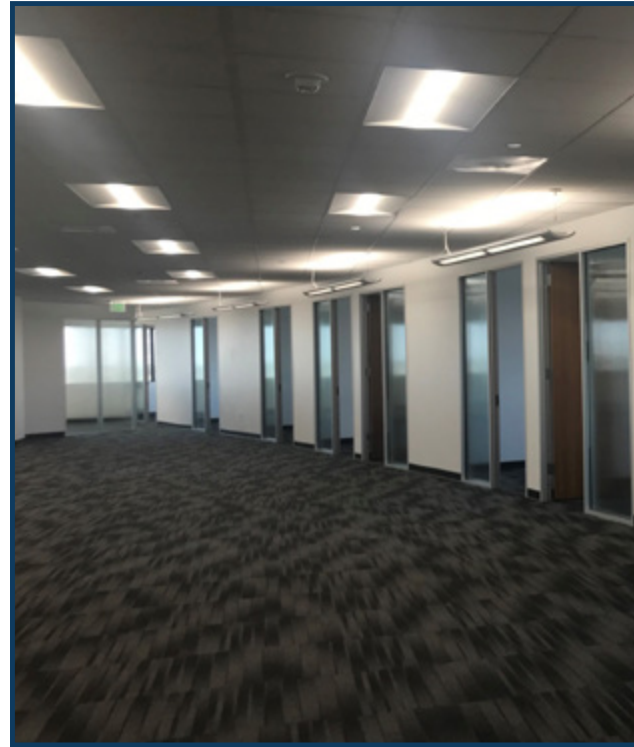
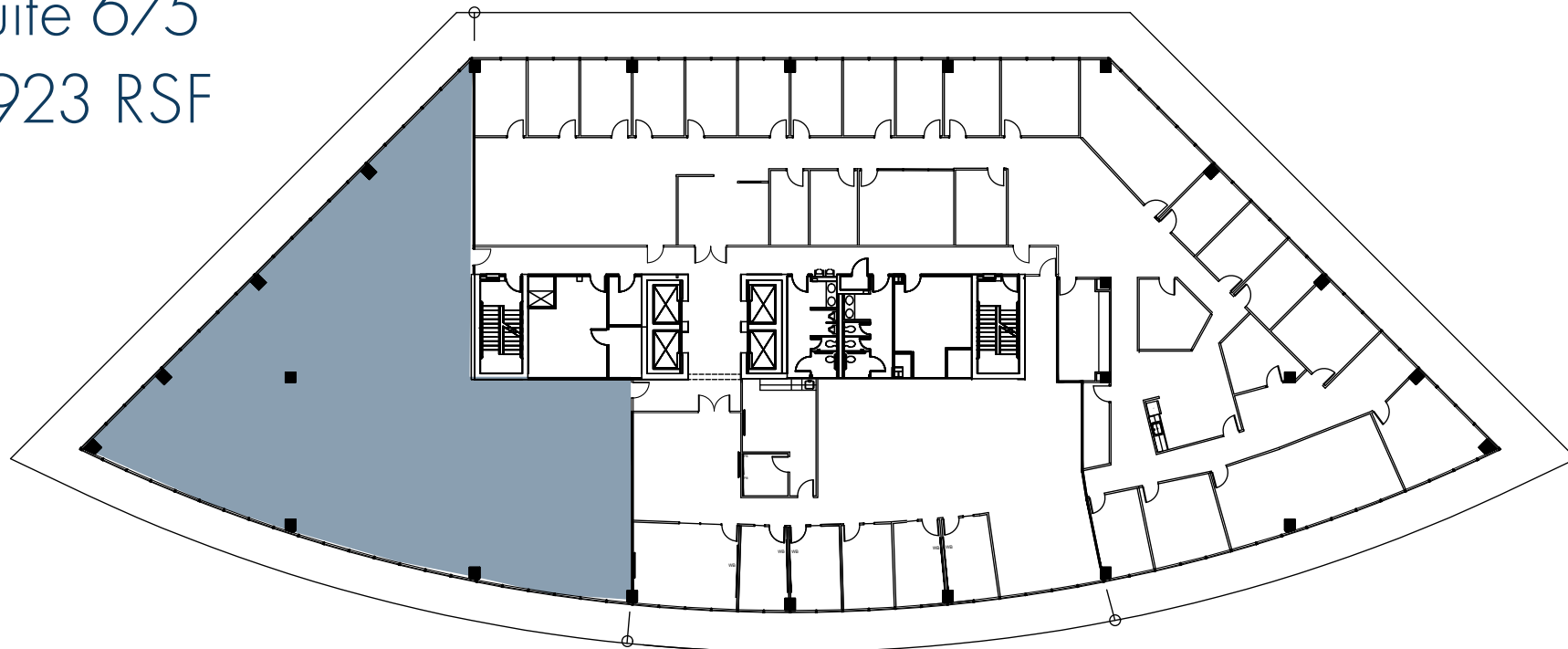
AVAILABILITIES

SPEC SUITE*
SUITE 700
11,536 RSF



*ABOVE MARKET SPEC SUITES
WITH HIGH-END FINISHES

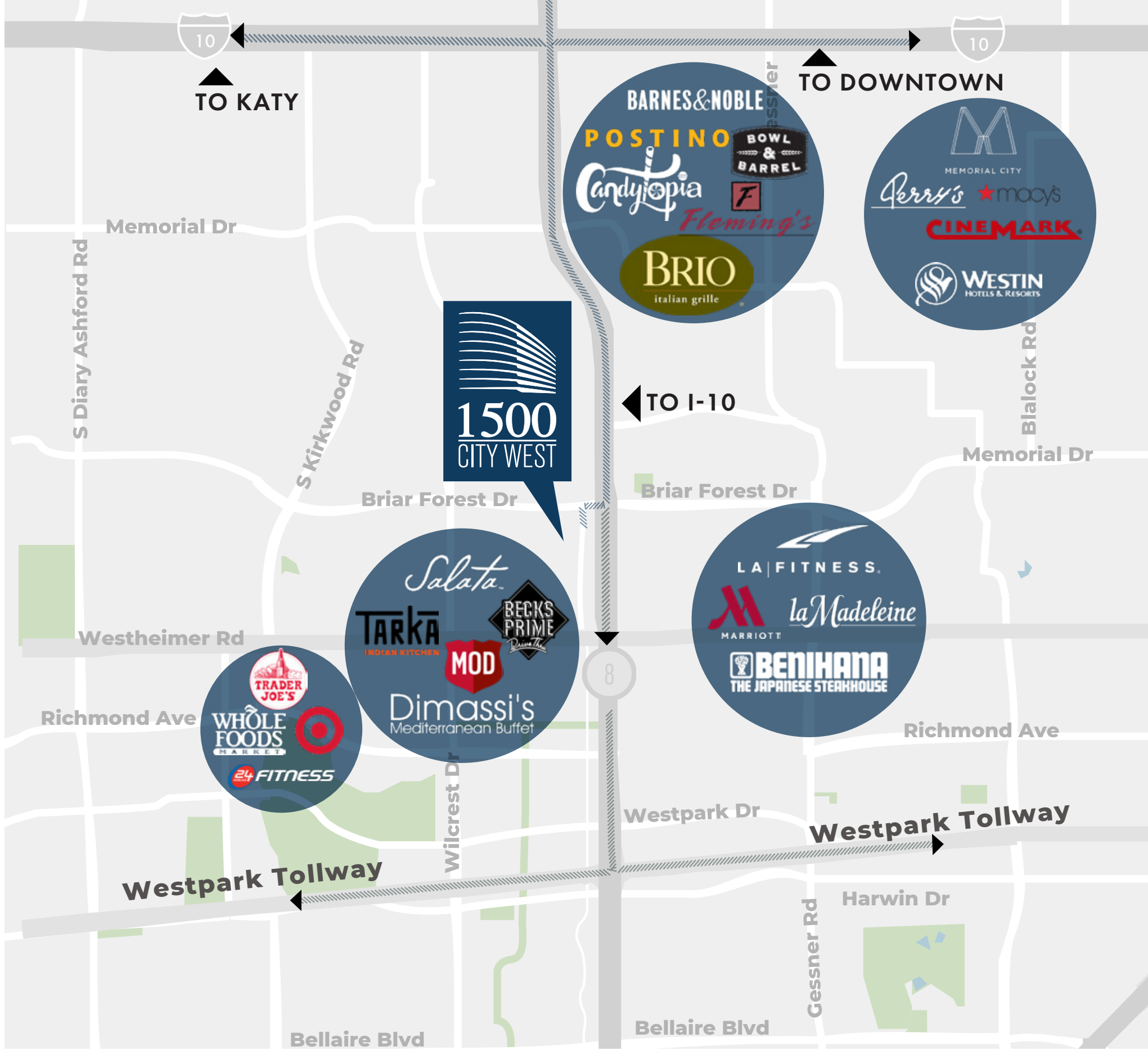
Suite 675
5,923 RSF



PRIME LOCATION

JUST MINUTES AWAY

DISCOVER WESTCHASE, FROM A+ DINING AND RETAIL TO FITNESS CLUBS & SPAS, EVERYTHING YOU NEED IS ONLY MINUTES AWAY.



BUILDING SIGNAGE OPPORTUNITIES AVAILABLE
VISIBLE FROM BELTWAY 8

MEMORIAL CITY <12 MINS CITY CENTRE <10 MINS

LIFE IN THE CITY



MEMORIAL CITY MALL
DINING
SHOPPING
HOTELS
EVENTS
LIVE MUSIC
ART
WELLNESS
BEAUTY
BOWLING
INDOOR SKYDIVING
CANDYTOPIA





LOUANN PEREIRA
713.272.1267
louann.pereira@transwestern.com

DOUG LITTLE
713.272.1284
doug.little@transwestern.com