

New Broken Arrow Retail Development - Now Pre Leasing

# Adams Creek Retail Center

Hillside Dr & County Line Broken Arrow, OK 74012

**WIGGIN**  
PROPERTIES, LLC  
41 YEARS STRONG



Coming  
Spring 2025

**Pre-Leasing**

## Retail Space Pre-Leasing

Available SF: ±1,400 SF - 6,000 SF

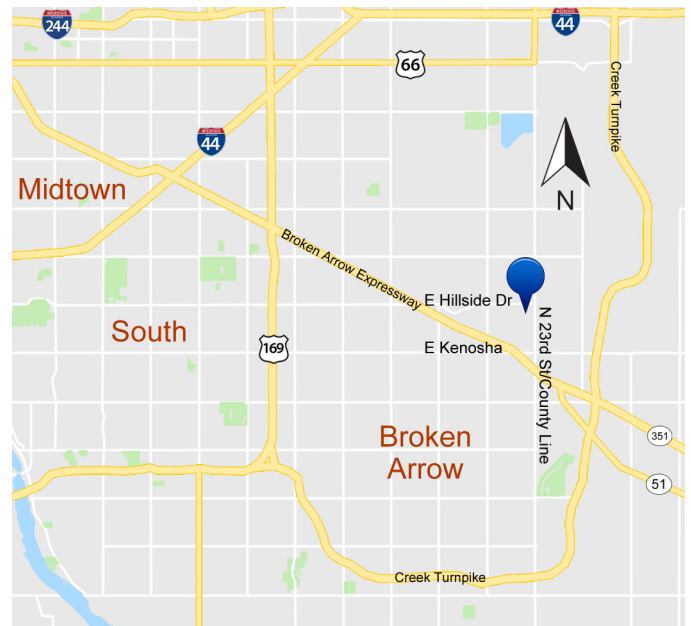
Lease Rate: \$30.00 to \$36.00 psf plus NNN

Access: E Hillside Drive

Parking: Ample Parking

Traffic Counts: 18,284 cpd ('20) N 23rd St/County Line  
26,736 cpd ('20) E Kenosha St  
51,794 cpd ('20) Highway 51/BA Expy

Traffic Generators: Lowes, Cinemark, Target, Reasor's, Ross,  
Dick's Sporting Goods, PetSmart, Ulta,  
Michael's, Marshalls



Call Grant Stewart, CCIM or Vicki Patterson, CCIM at **918.935.2010**

[gstewart@wigginprop.com](mailto:gstewart@wigginprop.com) | [vpatterson@wigginprop.com](mailto:vpatterson@wigginprop.com) | [wigginprop.com](http://wigginprop.com)

This material is provided for information purposes only. It is from sources believed to be reliable. However, Wiggin Properties makes no warranties or representations, expressed or implied, as to the accuracy or sufficiency of the information. It is presented subject to errors, omissions, changes or withdrawal without notice. Square footage is provided by the local County Assessor or the Owner. Photos and graphics with copyrights by Costar, Google, Wiggin Properties and independent contractors are used with permission.

New Broken Arrow Retail Development - Now Pre Leasing

# Adams Creek Retail Center

Hillside Dr & County Line Broken Arrow, OK 74012



## Demographics

2022	1 Mile	3 Miles	5 Miles
Population	7,401	59,853	154,728
Average HH Income	\$85,824	\$89,489	\$82,121
Owner Occupied Units	1,843	17,033	40,539
Renter Occupied Units	1,168	6,596	20,087



Call Grant Stewart, CCIM or Vicki Patterson, CCIM at **918.935.2010**

[gstewart@wigginprop.com](mailto:gstewart@wigginprop.com) | [vpatterson@wigginprop.com](mailto:vpatterson@wigginprop.com) | [wigginprop.com](http://wigginprop.com)

This material is provided for information purposes only. It is from sources believed to be reliable. However, Wiggin Properties makes no warranties or representations, expressed or implied, as to the accuracy or sufficiency of the information. It is presented subject to errors, omissions, changes or withdrawal without notice. Square footage is provided by the local County Assessor or the Owner. Photos and graphics with copyrights by Costar, Google, Wiggin Properties and independent contractors are used with permission.

New Broken Arrow Retail Development - Now Pre Leasing

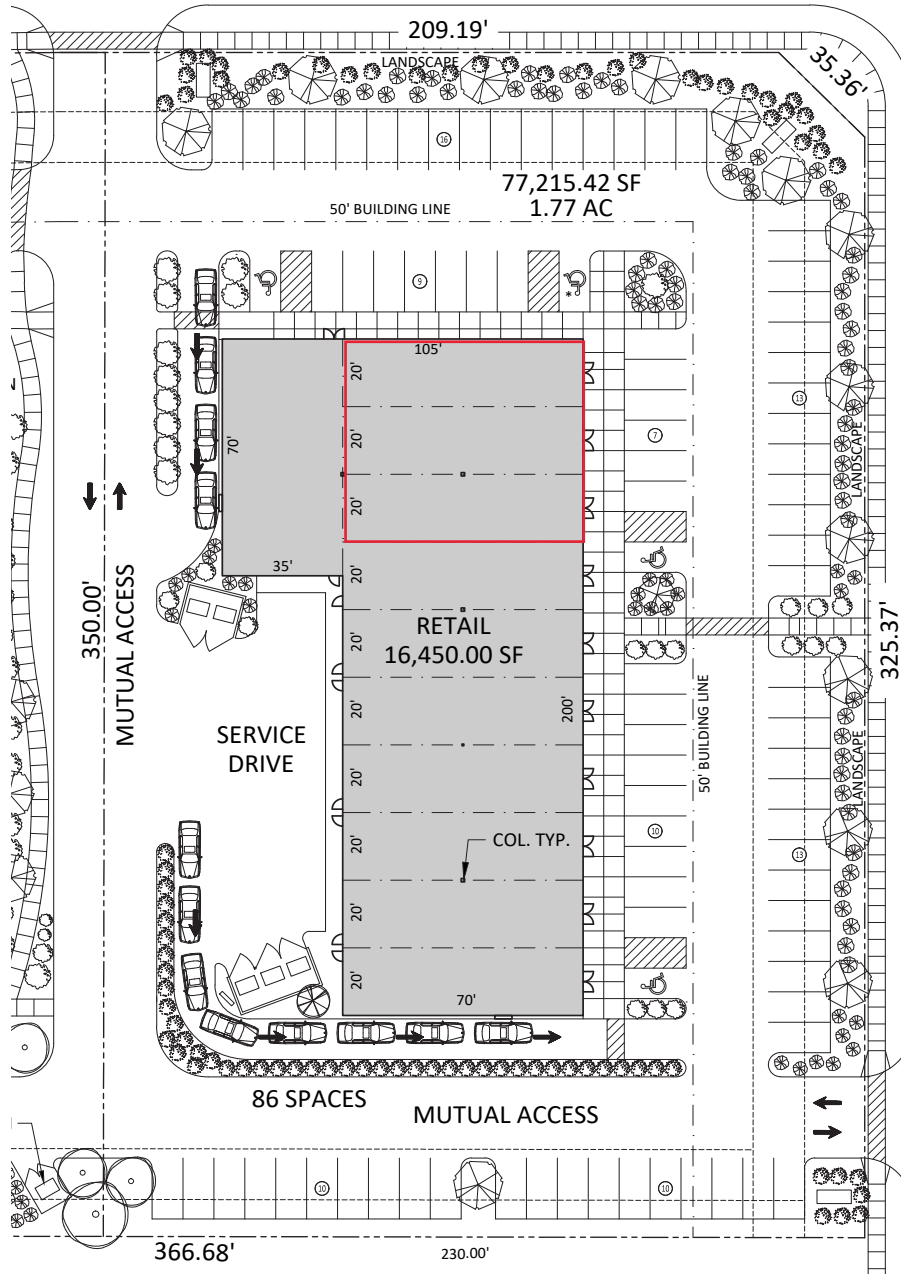
# Adams Creek Retail Center

Hillside Dr & County Line Broken Arrow, OK 74012

**WIGGIN**  
PROPERTIES, LLC

41 YEARS STRONG

EAST HILLSIDE DRIVE



NORTH 23RD STREET  
(COUNTY LINE ROAD/ SOUTH 193RD EAST AVENUE)

Call Grant Stewart, CCIM or Vicki Patterson, CCIM at **918.935.2010**

[gstewart@wigginprop.com](mailto:gstewart@wigginprop.com) | [vpatterson@wigginprop.com](mailto:vpatterson@wigginprop.com) | [wigginprop.com](http://wigginprop.com)

This material is provided for information purposes only. It is from sources believed to be reliable. However, Wiggin Properties makes no warranties or representations, expressed or implied, as to the accuracy or sufficiency of the information. It is presented subject to errors, omissions, changes or withdrawal without notice. Square footage is provided by the local County Assessor or the Owner. Photos and graphics with copyrights by Costar, Google, Wiggin Properties and independent contractors are used with permission.