

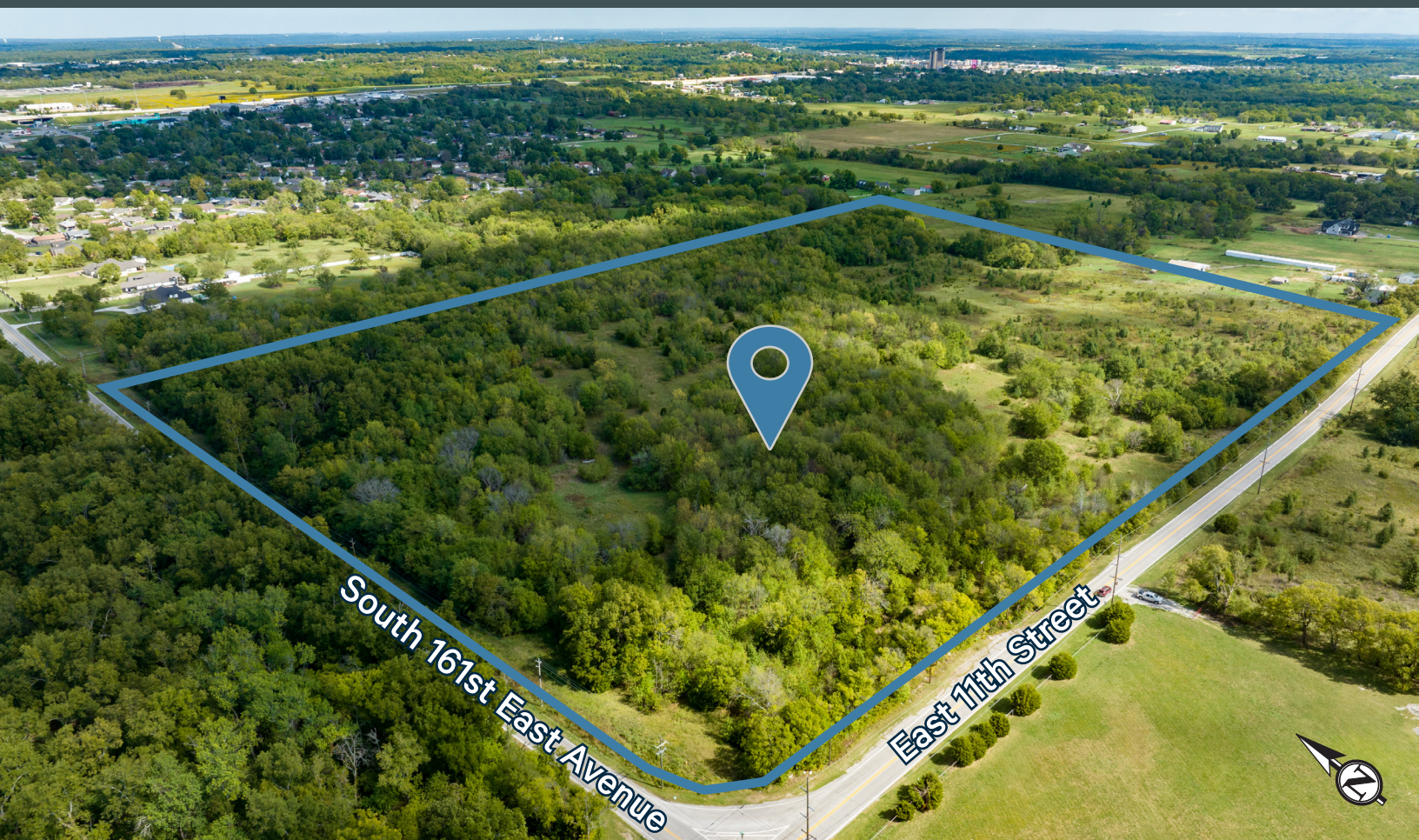
47± Acres of Prime Development Land

NEC East 11th Street & South 161st East Avenue
Tulsa, OK 74108
www.cbre.com

Property Features

- + 47.50± Acre Site*
- + Zoned Commercial Shopping / Office Light / Residential Single Family High Density (RTE-66 / CS / OL / RS-3)
 - 8-10 Acres Zoned CS (Commercial Shopping)
- + 1,320 SF frontage on South 161st East Avenue
- + 1,568 SF frontage on East 11th Street
- + Close proximity to Interstate 44.

*Source: Appraisal

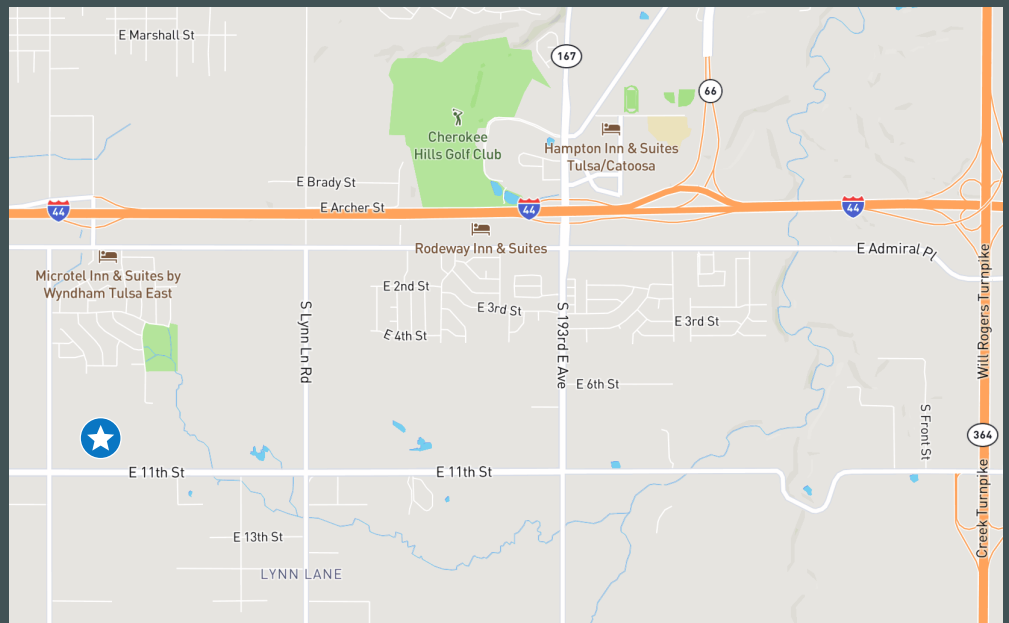




47± Acres of Prime Development Land

NEC East 11th Street & South 161st East Avenue | Tulsa, OK 74108

For Sale



Contact Us

Tony Aaronson

Senior Associate

+1 918 392 7257

tony.aaronson@cbre.com

© 2025 CBRE, Inc. All rights reserved. This information has been obtained from sources believed reliable, but has not been verified for accuracy or completeness. You should conduct a careful, independent investigation of the property and verify all information. Any reliance on this information is solely at your own risk. CBRE and the CBRE logo are service marks of CBRE, Inc. All other marks displayed on this document are the property of their respective owners, and the use of such logos does not imply any affiliation with or endorsement of CBRE. Photos herein are the property of their respective owners. Use of these images without the express written consent of the owner is prohibited.

www.cbre.com/tulsa

CBRE