

**22014 72nd Avenue S  
Kent, WA 98032**

**Industrial Sublease  
Opportunity**

**±24,300 – 36,836 SF with Office Available**



**For More Information**

**Matt Hermsen**  
206.626.0882 direct  
206.898.2655 mobile

**Ian Ducharme**  
206.626.0884 direct  
iducharme@cresa.com

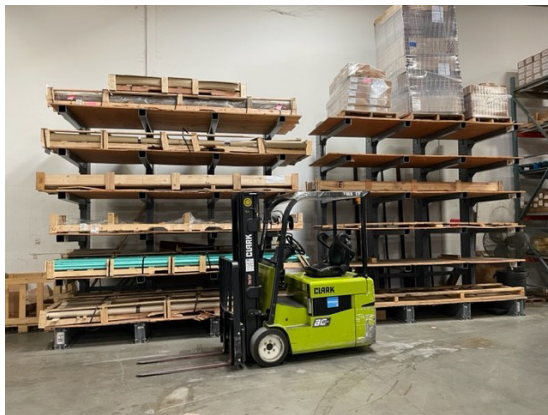
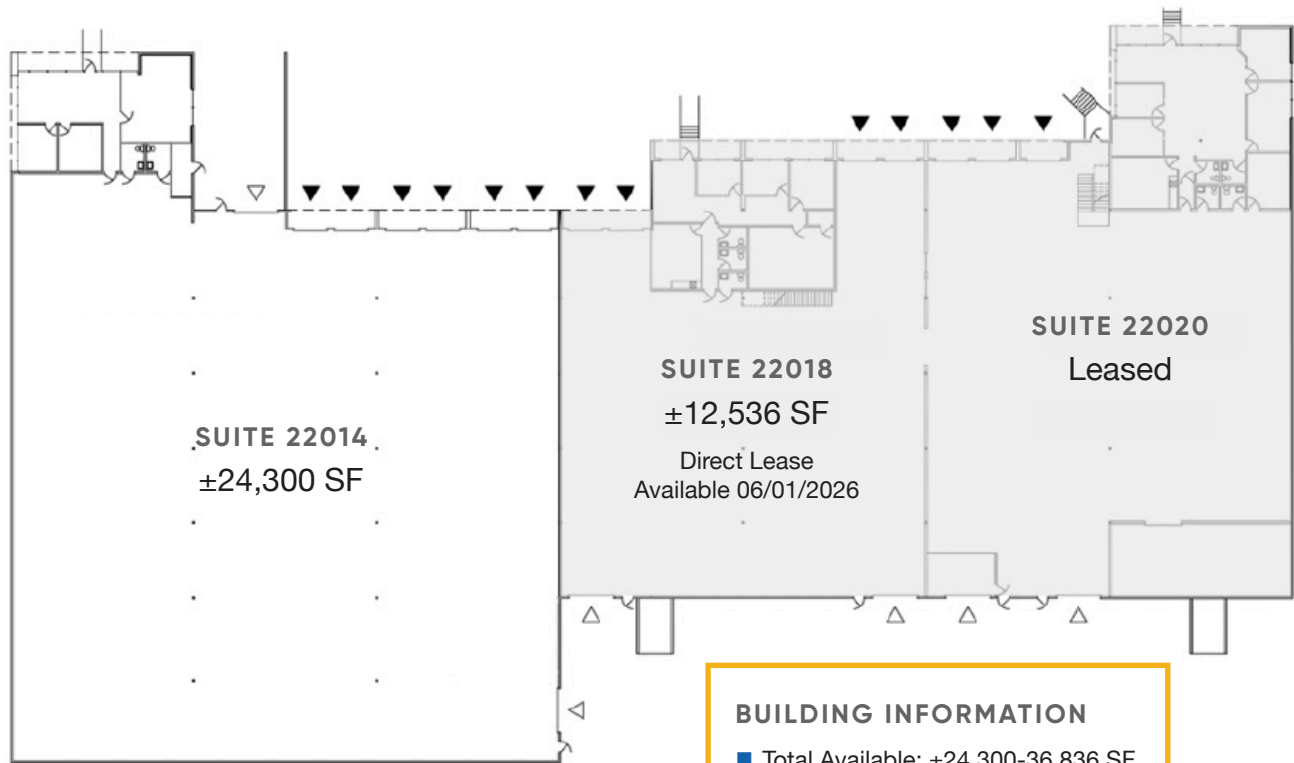
**Cresa**  
601 Union Street, Suite 4900  
Seattle, WA 98101

Even though obtained from sources deemed reliable, no warranty or representation, express or implied, is made as to the accuracy of the information herein, and it is subject to errors, omissions, change of price, rental or other conditions, withdrawal without notice, and to any special listing conditions imposed by our principals.

**cresa** 

**22014 72nd Avenue S  
Kent, WA 98032**

## **Industrial Sublease Opportunity**



### **BUILDING INFORMATION**

- Total Available: ±24,300-36,836 SF
- Includes ±1,383 SF Office
- Availability: 30 Days
- Term: March 31, 2027
- Rate: Please Inquire
- Loading: 6 Dock High  
1 Drive In
- Clear Height: 22'

### **For More Information**

**Matt Hermsen**

206.626.0882 direct

206.898.2655 mobile

**Ian Ducharme**

206.626.0884 direct

[iducharme@cresa.com](mailto:iducharme@cresa.com)

**Cresa**

601 Union Street, Suite 4900

Seattle, WA 98101

Even though obtained from sources deemed reliable, no warranty or representation, express or implied, is made as to the accuracy of the information herein, and it is subject to errors, omissions, change of price, rental or other conditions, withdrawal without notice, and to any special listing conditions imposed by our principals.

**cresa**



22014 72nd Avenue S  
Kent, WA 98032

## Industrial Sublease Opportunity



### For More Information

**Matt Hermsen**  
206.626.0882 direct  
206.898.2655 mobile

**Ian Ducharme**  
206.626.0884 direct  
iducharme@cresa.com

**Cresa**  
601 Union Street, Suite 4900  
Seattle, WA 98101

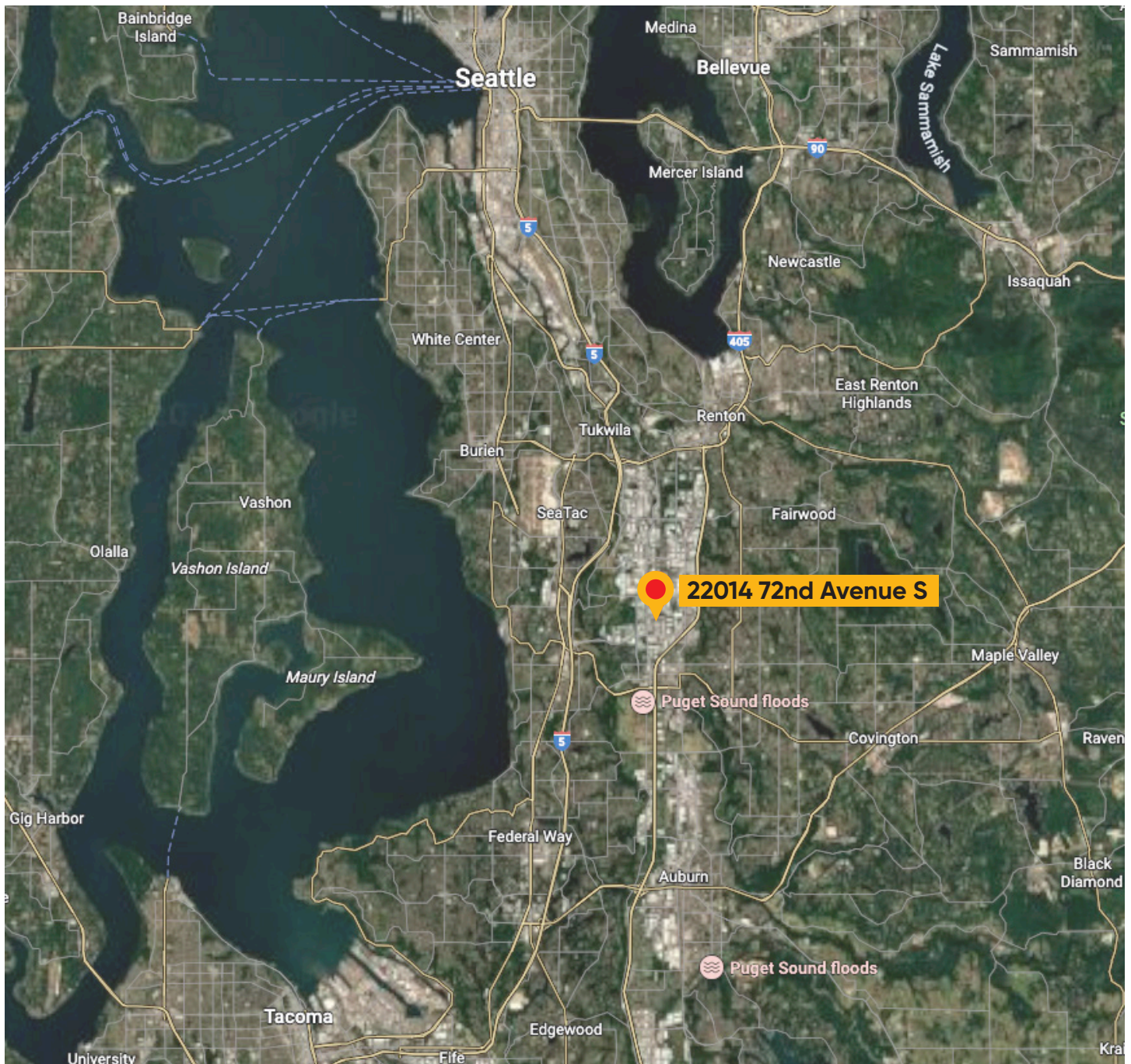
Even though obtained from sources deemed reliable, no warranty or representation, express or implied, is made as to the accuracy of the information herein, and it is subject to errors, omissions, change of price, rental or other conditions, withdrawal without notice, and to any special listing conditions imposed by our principals.

**cresa**



**22014 72nd Avenue S  
Kent, WA 98032**

**Industrial Sublease  
Opportunity**



**For More Information**

**Matt Hermsen**

206.626.0882 direct

206.898.2655 mobile

**Ian Ducharme**

206.626.0884 direct

iducharme@cresa.com

**Cresa**

601 Union Street, Suite 4900

Seattle, WA 98101

Even though obtained from sources deemed reliable, no warranty or representation, express or implied, is made as to the accuracy of the information herein, and it is subject to errors, omissions, change of price, rental or other conditions, withdrawal without notice, and to any special listing conditions imposed by our principals.

**cresa** 