

# 2950 London Groveport Rd.

Grove City, OH 43123

**Molly Leach**

Senior Vice President  
+1 614 332 4795  
[molly.leach@cbre.com](mailto:molly.leach@cbre.com)

**Sarah LaHue**

Associate  
+1 614 430 5060  
[sarah.lahue@cbre.com](mailto:sarah.lahue@cbre.com)

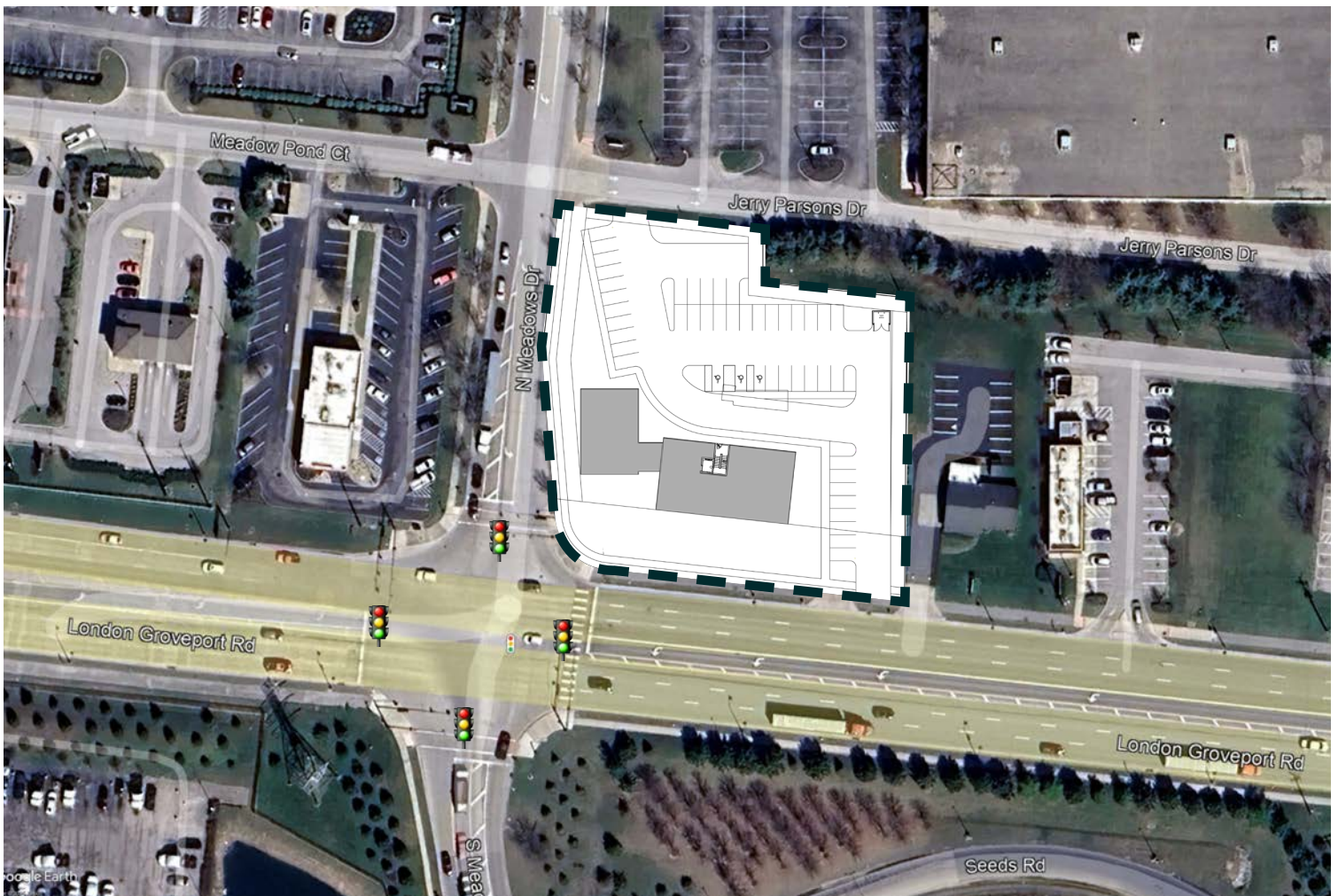
Build-to-Suit | 2,500 - 10,500 Sq. Ft Available For Lease



# Property Details

- +1.3 Acres available for development (Parcel #040-004969-00)
- +Prime location at the corner of London Groveport Road & North Meadows Drive, surrounded by amenities
- +2,500 - 10,500 Sq. Ft Available For Lease**
- +Lease Rate: \$32.00/PSF NNN**
- +Medical, office, and select retail uses allowable

# Proposed Site Plan

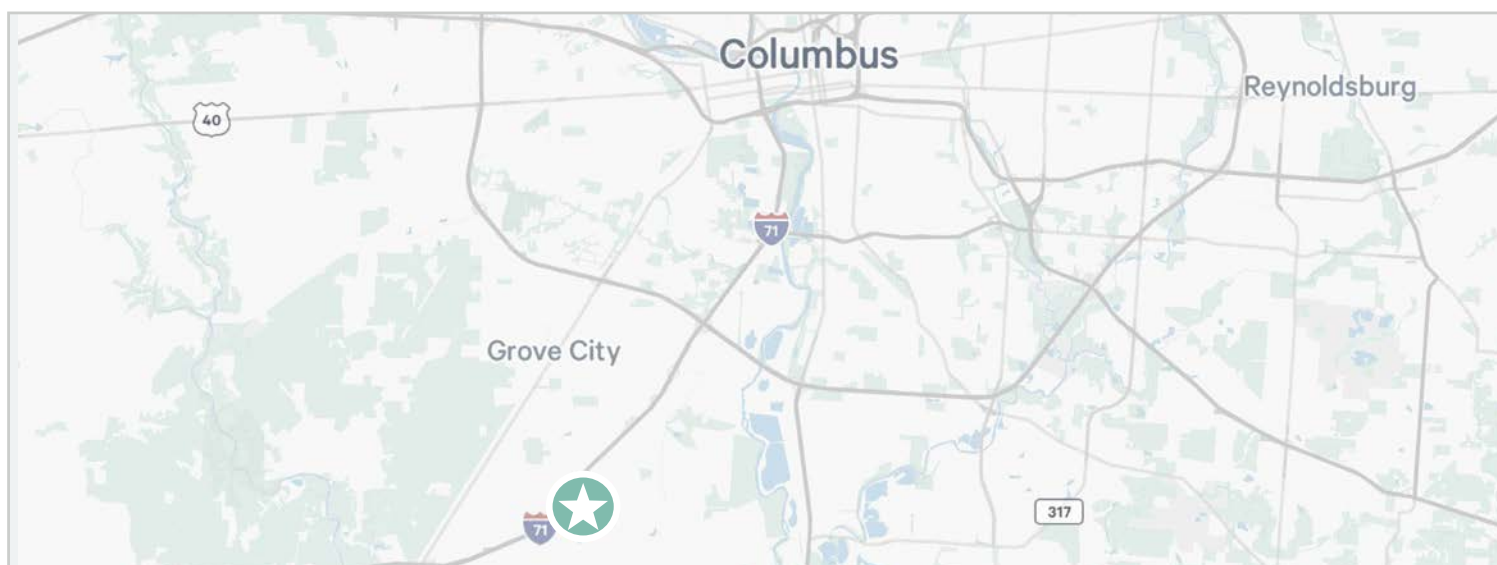




2950 London Groveport Rd  
Grove City | OH 43123

For Lease

# Prime Location





**2950 London Groveport Rd**  
Grove City | OH 43123

For Lease



## Contact Us

**Molly Leach**

Senior Vice President  
+1 614 332 4795  
[molly.leach@cbre.com](mailto:molly.leach@cbre.com)

**Sarah LaHue**

Associate  
+1 614 430 5060  
[sarah.lahue@cbre.com](mailto:sarah.lahue@cbre.com)

**CBRE**

200 Civic Center Dr, 14th Fl  
Columbus, OH 43215

© 2025 CBRE, Inc. All rights reserved. This information has been obtained from sources believed reliable, but has not been verified for accuracy or completeness. You should conduct a careful, independent investigation of the property and verify all information. Any reliance on this information is solely at your own risk. CBRE and the CBRE logo are service marks of CBRE, Inc. All other marks displayed on this document are the property of their respective owners, and the use of such logos does not imply any affiliation with or endorsement of CBRE. Photos herein are the property of their respective owners. Use of these images without the express written consent of the owner is prohibited.

