



EDISTO ISLAND, SOUTH CAROLINA

o King Rail Lane

34.73 Acres · 6 Parcels · Century-Old Live Oaks · 2.5 Miles to Edisto Beach

\$1,995,000

\$57,443 per acre · Seller Financing Available

34.73
ACRES

6
TAX PARCELS

2.5 mi
TO BEACH

<1 hr
TO CHARLESTON

ABOUT THIS ESTATE

Just 2.5 miles from the pristine shores of Edisto Beach, this extraordinary 34.7-acre estate unfolds beneath a canopy of centuries-old live oaks. A quiet non-tidal creek winds through portions of the acreage, and winding internal roadways connect six individual tax parcels — offering multiple pathways forward: a singular legacy estate, a multi-generational compound, or selective release of estate-sized homesites. On Edisto Island, properties like this are no longer created — only discovered.

PROPERTY HIGHLIGHTS

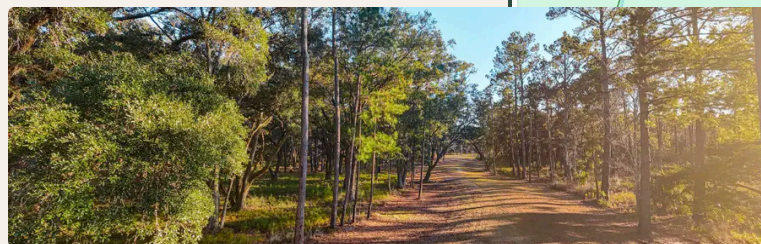
- ◆ 34.73 acres across 6 individual tax parcels
- ◆ Century-old live oaks with Spanish moss canopy
- ◆ Private drive with winding internal roadways
- ◆ Non-tidal creek running through the acreage
- ◆ Mixture of wetlands & high-ground homesites
- ◆ Electricity connected on property
- ◆ Horses allowed — equestrian-friendly
- ◆ Cul-de-sac lot on a private dirt road
- ◆ Seller financing available (qualified buyers)
- ◆ See pages 2–3 for individual parcel maps

ALL PARCELS OVERVIEW



PROPERTY DETAILS

PROPERTY TYPE Land / Lots	LOT SIZE 34.73 Acres
TAX PARCELS 6 Individual	ROAD ACCESS Private / Cul-de-Sac
UTILITIES Electricity Connected	LOT FEATURES Wooded, Wetlands, Creek
POSSIBLE USE Residential / Estate	HORSES Allowed
ELEMENTARY Jane Edwards	MIDDLE / HIGH Baptist Hill



DIRECTIONS

From Charleston: Take Hwy 17 South → Turn left onto SC Hwy 174 → Turn right in Adams Run to continue on SC Hwy 174 → Continue approx. 20 miles. **Property will be on the left.**

Angelia Araneo

Home Advantage Realty LLC Lowcountry
License #77301 · Listed March 3, 2026

(843) 909-2582

MLS #26005938 · CHS Regional MLS

Lots 1 – 3 · Parcel Detail Maps

Each parcel is individually deeded and may be purchased as part of the full estate or separately (subject to seller approval). All measurements shown are approximate and sourced from tax records.

Lot 1 7.68 Acres

TMS: 0630000008



PARCEL
Lot 1

ROAD FRONTAGE
Hwy 174 Access

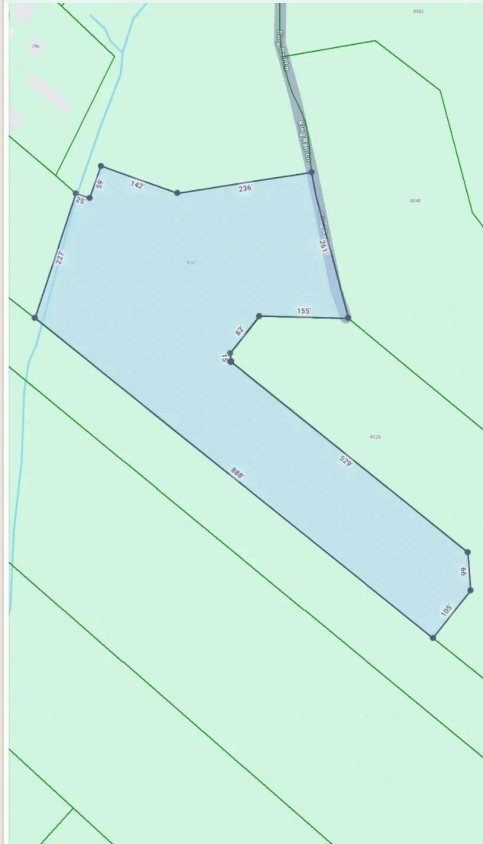
FEATURES
Live Oaks, Creek

UTILITIES
Electricity On Site

Overview of all 6 parcels. Lot 1 fronts Hwy 174 with private road access via King Rail Lane.

Lot 2 5.45 Acres

TMS: 0630000009



DIMENSIONS
142'–888' sides

ROAD ACCESS
King Rail Ln

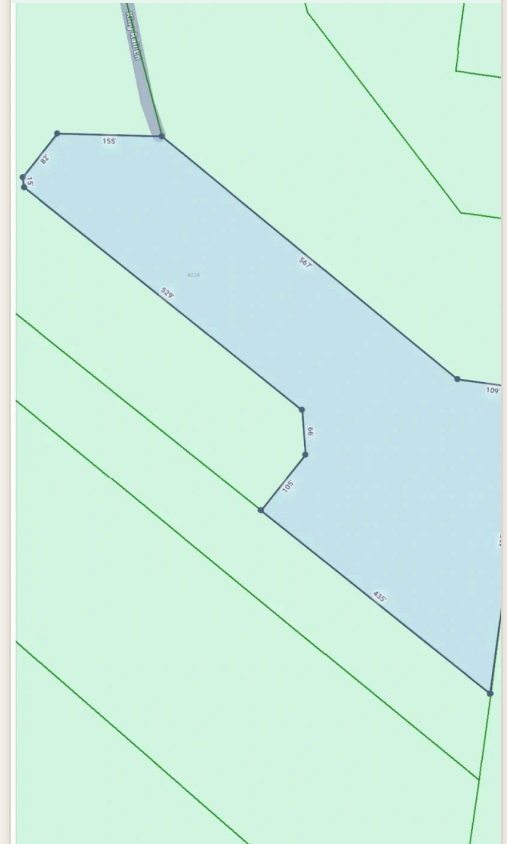
FEATURES
Wooded, Wetlands

SHAPE
Irregular Polygon

Key measurements: 236', 261', 155', 888', 529', 227'. Includes creek frontage and wooded interior.

Lot 3 5.01 Acres

TMS: 0630000010



DIMENSIONS
155'–529' sides

ROAD ACCESS
King Rail Ln

FEATURES
Long Diagonal Parcel

SHAPE
Elongated Polygon

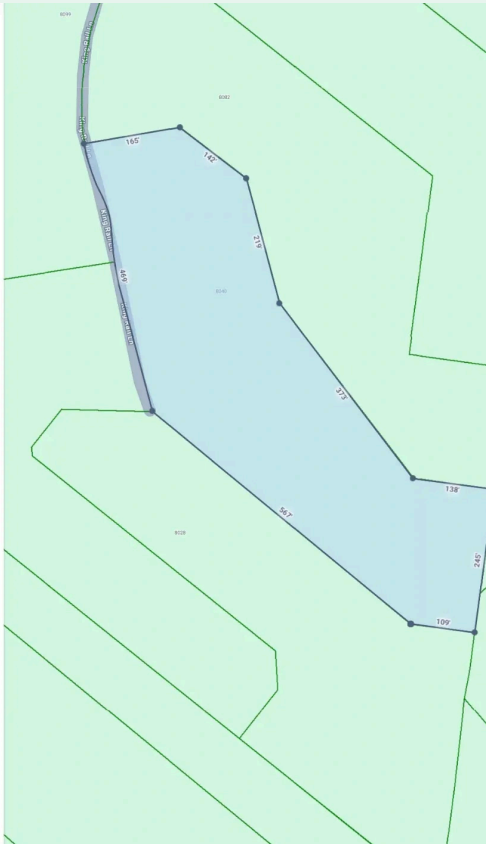
Key measurements: 155', 529', 567', 109', 435'. Long diagonal parcel with road access at top.

Lots 4 – 6 · Parcel Detail Maps

Each parcel is individually deeded and may be purchased as part of the full estate or separately (subject to seller approval). All measurements shown are approximate and sourced from tax records.

Lot 4 5.34 Acres

TMS: 0630000011



DIMENSIONS
165'-567' sides

ROAD ACCESS
King Rail Ln

FEATURES
Road Frontage

SHAPE
Irregular Polygon

Key measurements: 165', 142', 219', 469', 373', 567', 138', 245', 109'. King Rail Ln frontage on west side.

Lot 5 5.46 Acres

TMS: 0630000012



DIMENSIONS
361'-649' sides

ROAD ACCESS
King Rail Ln

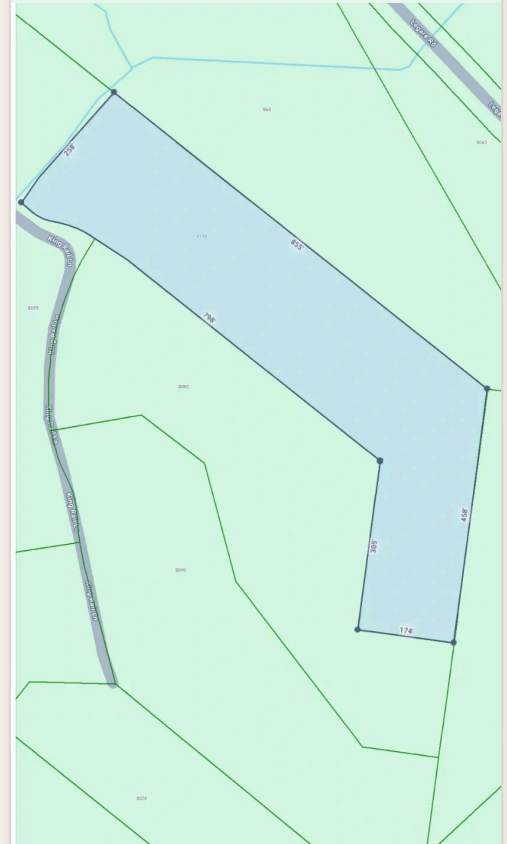
FEATURES
Large Interior Parcel

SHAPE
Irregular Polygon

Key measurements: 649', 165', 142', 219', 305', 174', 373', 207', 138'. Large parcel with King Rail Ln frontage.

Lot 6 5.78 Acres

TMS: 0630000013



DIMENSIONS
258'-798' sides

ROAD ACCESS
King Rail Ln / Legare Rd

FEATURES
Legare Rd Proximity

SHAPE
Long Diagonal

Key measurements: 258', 655', 798', 305', 456', 174'. Southernmost parcel near Legare Rd with long diagonal shape.