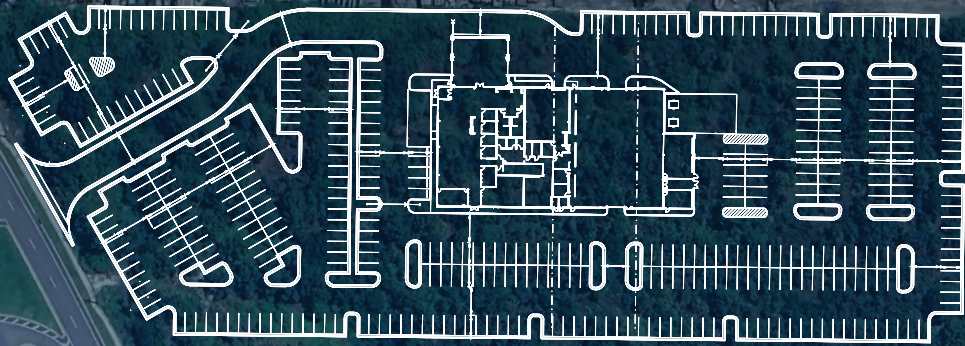


7833

NARCOOSSEE ROAD

Auto Dealership | Car Rental | Airport Parking

OPPORTUNITY



5 ACRES AVAILABLE
FOR LEASE OR BUILD TO SUIT
(up to 9 total acres potentially available)

7833

NARCOOSSEE ROAD



Property Overview

- Prime land opportunity at 7833 Narcoossee Road, Orlando, FL 32822, offering unparalleled flexibility for lease or build-to-suit projects. Spanning 5 acres with potential expansion up to 9 acres, this site is strategically positioned to accommodate high-demand automotive and parking-related uses.
- Approved for an auto dealership, car rental operations, and airport parking, the site offers a streamlined path to development with fully approved wetland mitigation credits and permits — ready for groundbreaking in just 60 days.
- While ownership prefers to lease, purchase options may be explored. Don't miss this rare opportunity to secure a premier location with turnkey readiness for development.

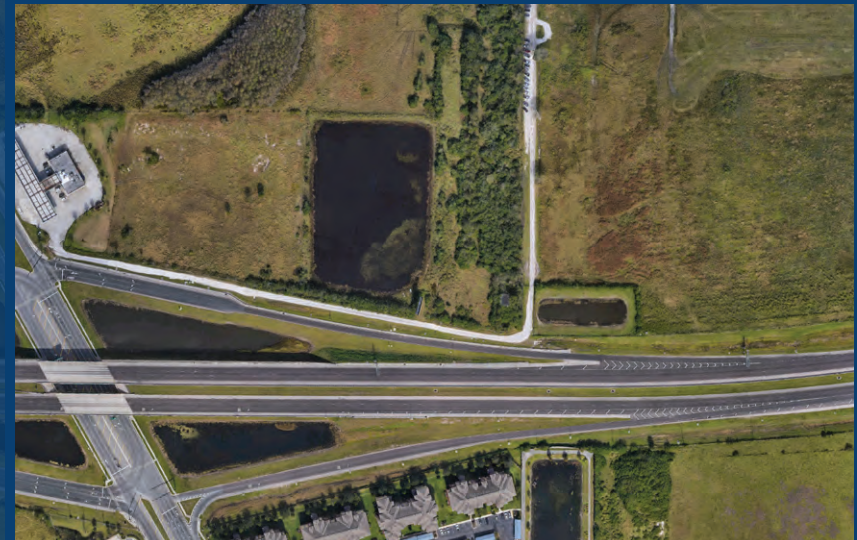
Key Highlights

- **Land Size:** 5 acres (expandable to 9 acres)
- **Prime Location:** Narcoossee Road corridor, 5 minutes drive from Orlando Airport, minutes from key transportation hubs.
- **Permitted Uses:** Auto dealership, car rental, and airport parking.
- **Development Ready:** Fully approved permits and mitigation credits. Ownership can begin construction in 60 days.
- **Flexible Options:** Lease preferred; purchase negotiable.
- **Ideal for visionary developers** seeking a high-traffic site with immediate development potential.



7833
NARCOOSSEE ROAD

7833 NARCOOSSEE RD. ORLANDO, FL 32822



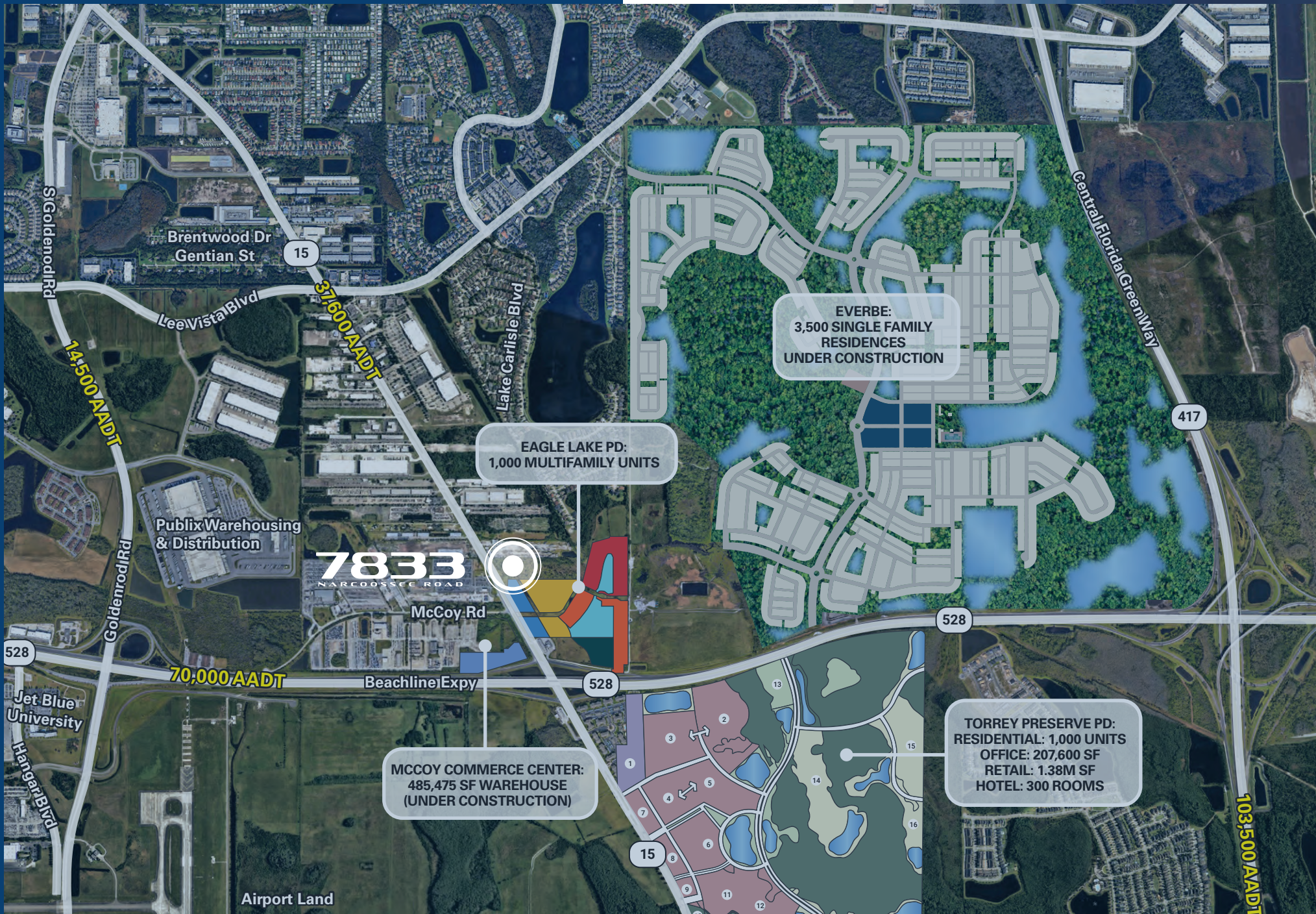
Drive Times

AREA SUMMARY

- Located on the highly desirable Narcoossee Road corridor in Orlando, FL, this property offers prime visibility and connectivity in a rapidly growing commercial and residential hub. Just minutes from Orlando International Airport (MCO), it is an ideal location for automotive, logistics, and travel-related businesses.
- Surrounded by retail, dining, and residential developments, the site benefits from East Orlando's continued growth and high traffic volumes. Its proximity to major highways, including SR 528 and SR 417, ensures seamless access to downtown Orlando, Lake Nona, and other key markets.
- With a strategic location, strong market demographics, and ongoing development, this property is well-positioned for success.



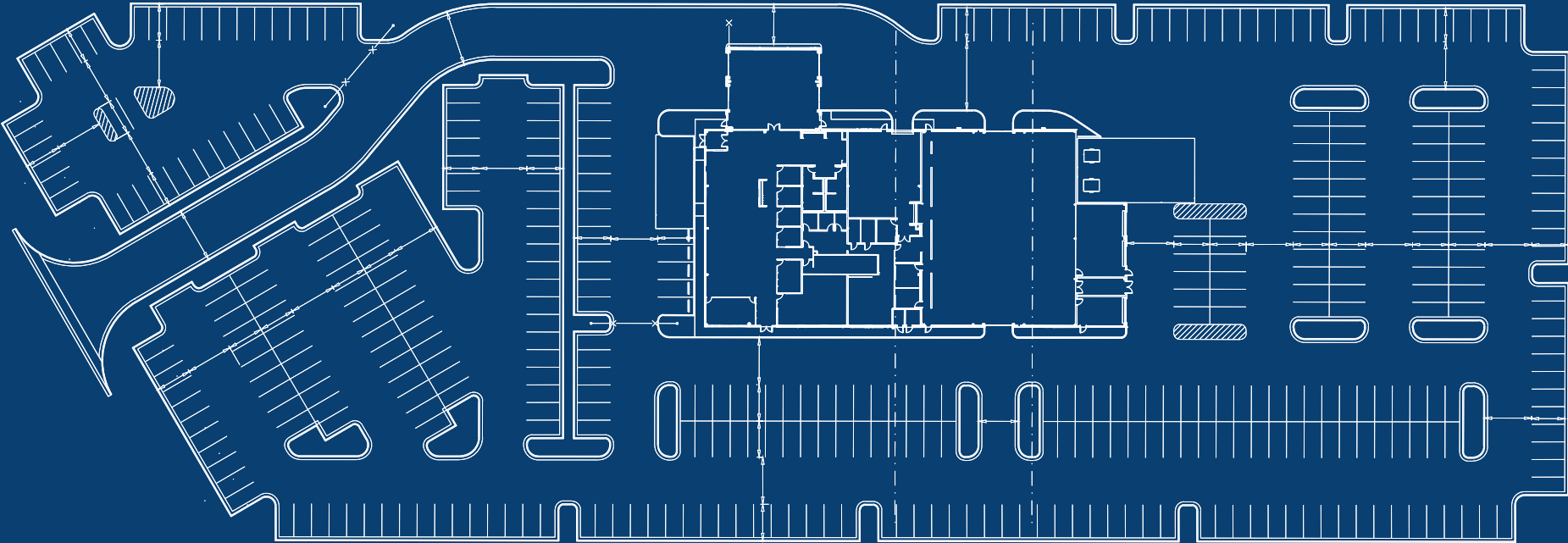
Aerial Map



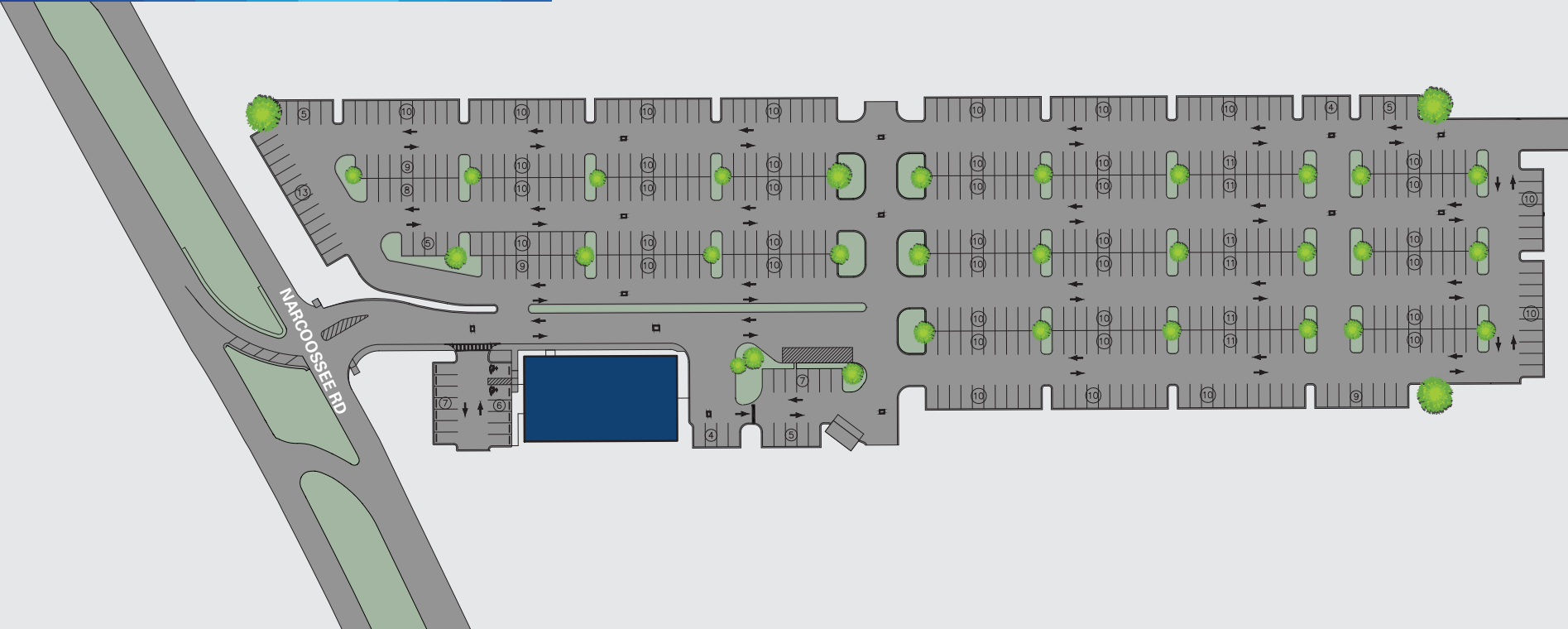
Car Dealership **Plan**

7833

NARCOOSSEE ROAD



Car Rental Plan



7833
NARCOOSSEE ROAD

7833

NARCOOSSEE ROAD

7833 NARCOOSSEE RD. ORLANDO, FL 32822

Chase Deuschle
Senior Managing Director

Chase.Deuschle@nmrk.com
954-801-7945

Aaron Lazar
Associate

Aaron.Lazar@nmrk.com
240-994-0242

NEWMARK

NMRK.COM/RETAILSERVICES

These materials are strictly confidential and have been provided to you by Newmark Group, Inc. and/or its affiliates as set out below (together, "Newmark", "we" or "us") and may not be used or relied upon unless expressly agreed in writing with us. These materials and the information contained herein are intended solely for your information and may not be disclosed or distributed to any other person, or otherwise replicated in any form without the prior written consent of Newmark. The materials are expressed as of the date hereof and are subject to change. Newmark assumes no obligation to update or otherwise revise these materials. The information has been obtained from or based upon sources believed by Newmark to be reliable, but Newmark does not warrant its accuracy or completeness and is not responsible for losses or damages arising out of errors, omissions, or changes or from the use of information presented in this document. This material does not purport to contain all of the information that an interested party may desire and, in fact, provides only a limited view. Any headings are for convenience of reference only and shall not be deemed to modify or influence the interpretation of the information.

This material has been prepared by us based on assumptions and parameters determined by us in good faith. The assumptions and parameters used are not the only ones that might reasonably have been selected and therefore no guarantee is given as to the accuracy, completeness or reasonableness of any such quotations, disclosure or analyses. A variety of other or additional assumptions or parameters, or other market factors and other considerations, could result in different contemporaneous good faith analyses or assessment of the transaction described above.