

# BATAVIA WEST BUSINESS PARK INDUSTRIAL FOR LEASE

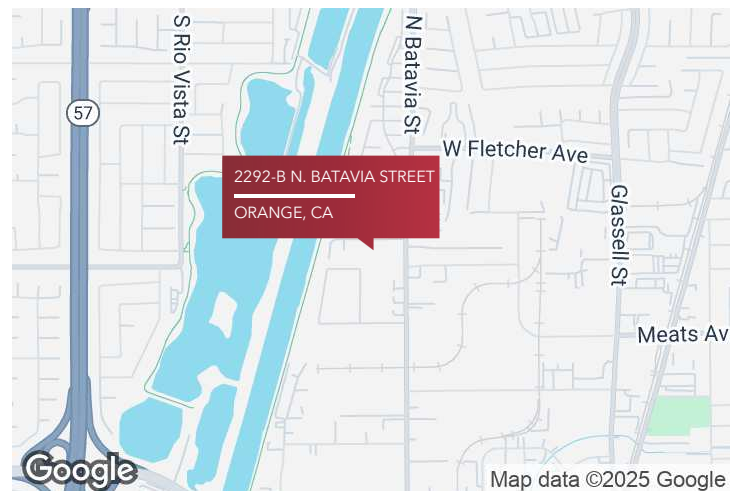
— 2292-B N. Batavia Street, Orange, CA

**LEE & ASSOCIATES**  
COMMERCIAL REAL ESTATE SERVICES  
**±5,291 SF**



## PROPERTY HIGHLIGHTS

- High-Image Building and Office Built Out
- ±800 SF Office Area: Reception, Three (3) Private Offices, Two (2) Restrooms
- Functional Office Layout
- Two (2) Ground Level Loading Doors
- ±15' Warehouse Ceiling Clearance
- Power: 400 Amps, 120/280 Volts, 3 Phase Power, 4 Wire (verify)
- Parking: 2 Cars per 1,000 SF (2:1)
- Excellent Layout for many different types of businesses
- Available July 1, 2025
- To Show: Please call or email agent



[CLICK FOR WEBSITE](#)

**Daniel Son**

AGENT

+714.315.0877

[dson@lee-associates.com](mailto:dson@lee-associates.com)

DRE# 02078285

**John Son**

PRINCIPAL

+714.564.7183

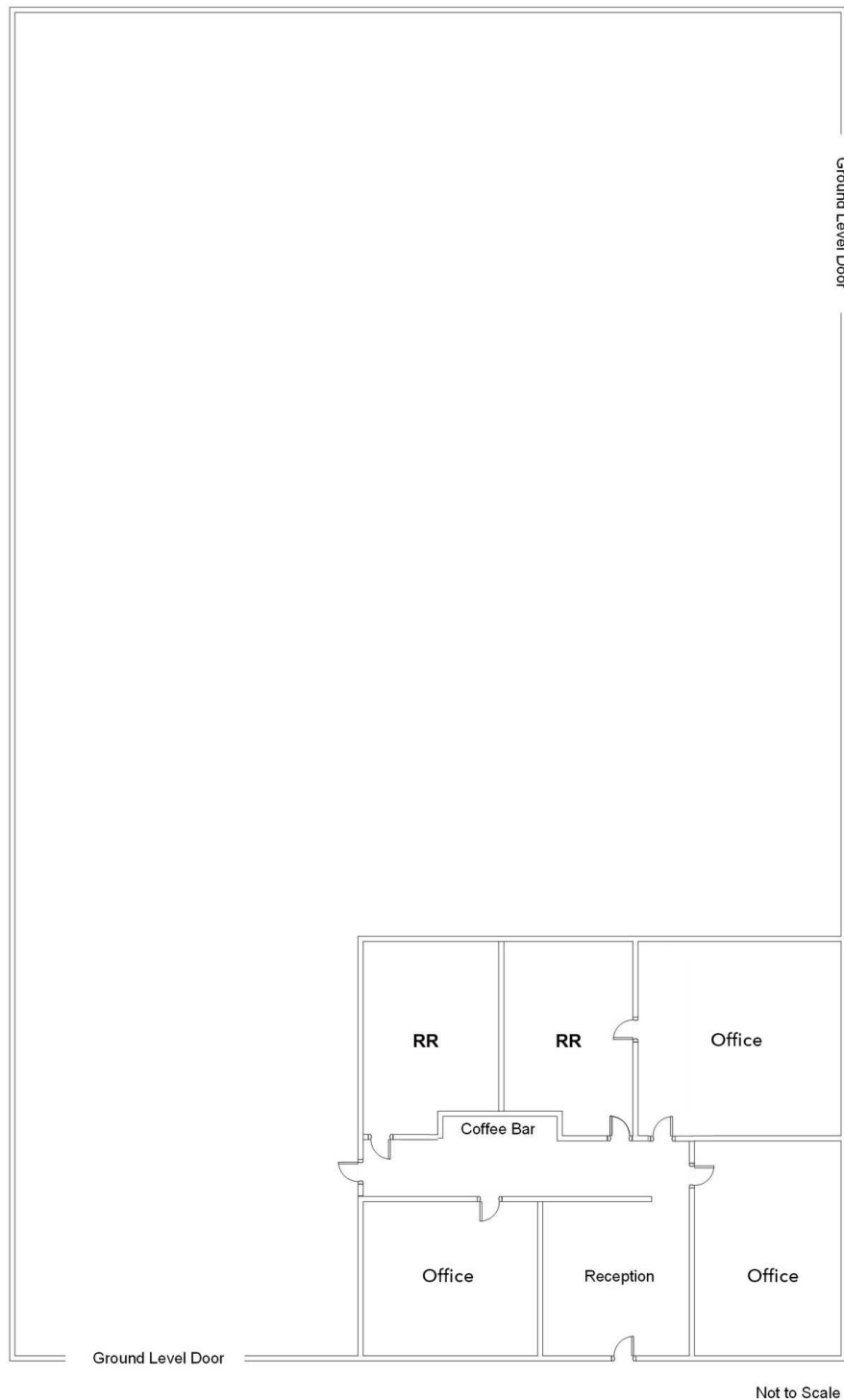
[json@lee-associates.com](mailto:json@lee-associates.com)

DRE# 01069091

# FLOOR PLANS

— 2292-B N. Batavia Street, Orange, CA

**±5,291 SF**



**Daniel Son**

**AGENT**

+714.315.0877

[dson@lee-associates.com](mailto:dson@lee-associates.com)

DRE# 02078285

**John Son**

**PRINCIPAL**

+714.564.7183

[json@lee-associates.com](mailto:json@lee-associates.com)

DRE# 01069091



BATAVIA WEST BUSINESS PARK

# ADDITIONAL PHOTOS

— 2292-B N. Batavia Street, Orange, CA

**LEE & ASSOCIATES**

COMMERCIAL REAL ESTATE SERVICES

**±5,291 SF**



**Daniel Son**

AGENT

+714.315.0877

[dson@lee-associates.com](mailto:dson@lee-associates.com)

DRE# 02078285

**John Son**

PRINCIPAL

+714.564.7183

[json@lee-associates.com](mailto:json@lee-associates.com)

DRE# 01069091

1004 West Taft Avenue, Suite 150 | Orange, CA 92865 | 714.647.9100 | [lee-associates.com/orange/](http://lee-associates.com/orange/) | DRE# 01011260



All information furnished regarding property for sale, rental or financing is from sources deemed reliable, but no warranty or representation is made to the accuracy thereof and same is submitted to errors, omissions, change of price, rental or other conditions prior to sale, lease or financing or withdrawal without notice. No liability of any kind is to be imposed on the broker herein.



BATAVIA WEST BUSINESS PARK

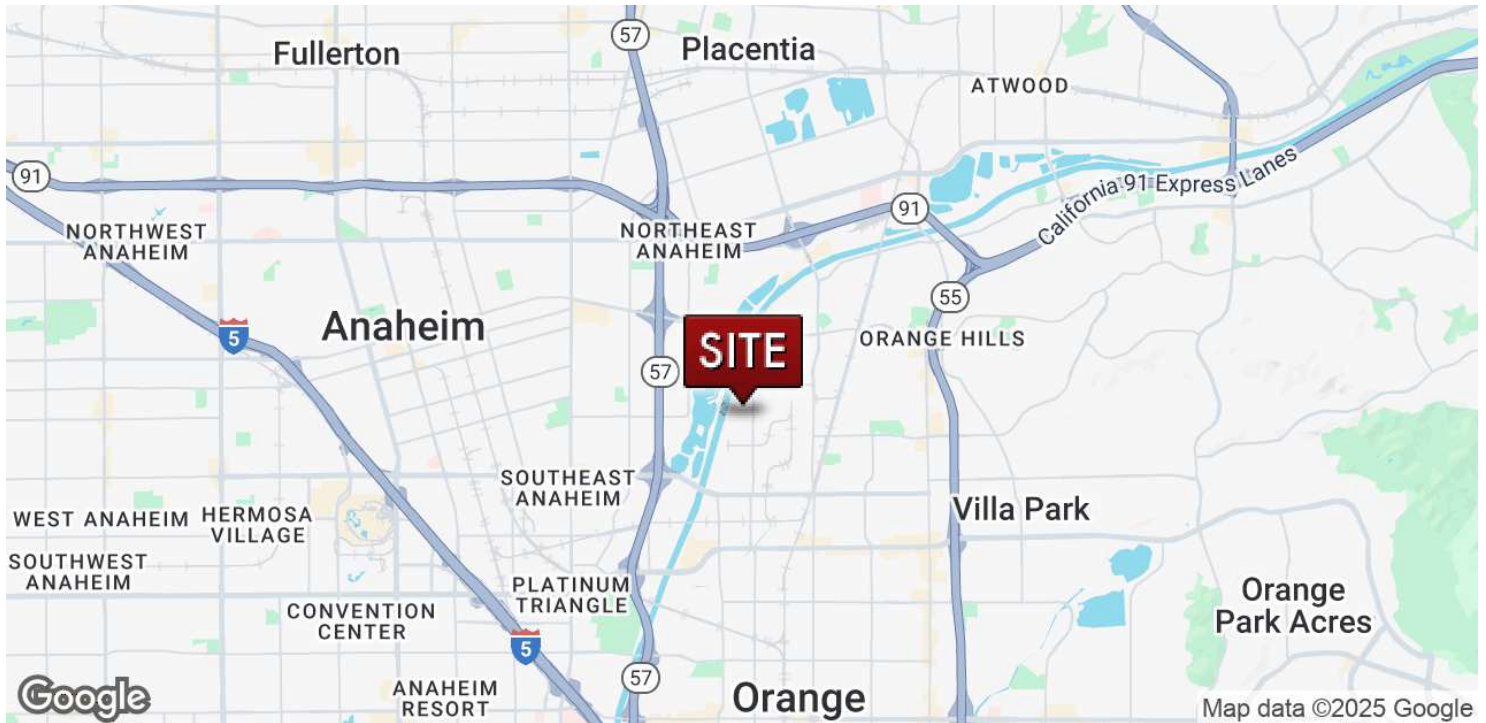
# LOCATION MAP/AERIAL

— 2292-B N. Batavia Street, Orange, CA

**LEE & ASSOCIATES**

COMMERCIAL REAL ESTATE SERVICES

**±5,291 SF**



**Daniel Son**

AGENT

+714.315.0877

[dson@lee-associates.com](mailto:dson@lee-associates.com)

DRE# 02078285

**John Son**

PRINCIPAL

+714.564.7183

[json@lee-associates.com](mailto:json@lee-associates.com)

DRE# 01069091

1004 West Taft Avenue, Suite 150 | Orange, CA 92865 | 714.647.9100 | [lee-associates.com/orange/](http://lee-associates.com/orange/) | DRE# 01011260



All information furnished regarding property for sale, rental or financing is from sources deemed reliable, but no warranty or representation is made to the accuracy thereof and same is submitted to errors, omissions, change of price, rental or other conditions prior to sale, lease or financing or withdrawal without notice. No liability of any kind is to be imposed on the broker herein.