

Vista Business Park

8850 Windfern Rd, Houston, TX 77064

Available: Two 2,600 SF units; individually or contiguous; move-in ready



**Easy Access to US-290 and
Beltway 8**



Secured, Gated Entry



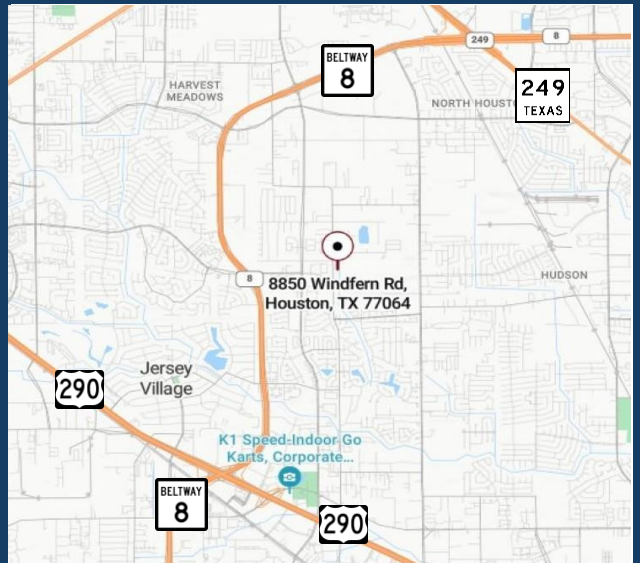
**13' Clear Height, Grade Level
Doors**



3-Phase Power (240 V)



2,600 SF to 5,200 SF available



Leasing

Doug Goff



(281) 678-5863



doug@vistadevpartners.com

This information is deemed reliable, however, Fort makes no guarantee, warranties, or representations as to the completeness or accuracy thereof.

Vista Business Park

8850 Windfern Rd, Houston, TX 77064

Newly Renovated: Available now (2,600 SF) or January 1 (2,600 SF)



Call for pricing, details, tours

Doug Goff



(281) 678-5863

doug@vistadevpartners.com

This information is deemed reliable, however, Fort makes no guarantee, warranties, or representations as to the completeness or accuracy thereof.

Vista Business Park

8850 Windfern Rd, Houston, TX 77064

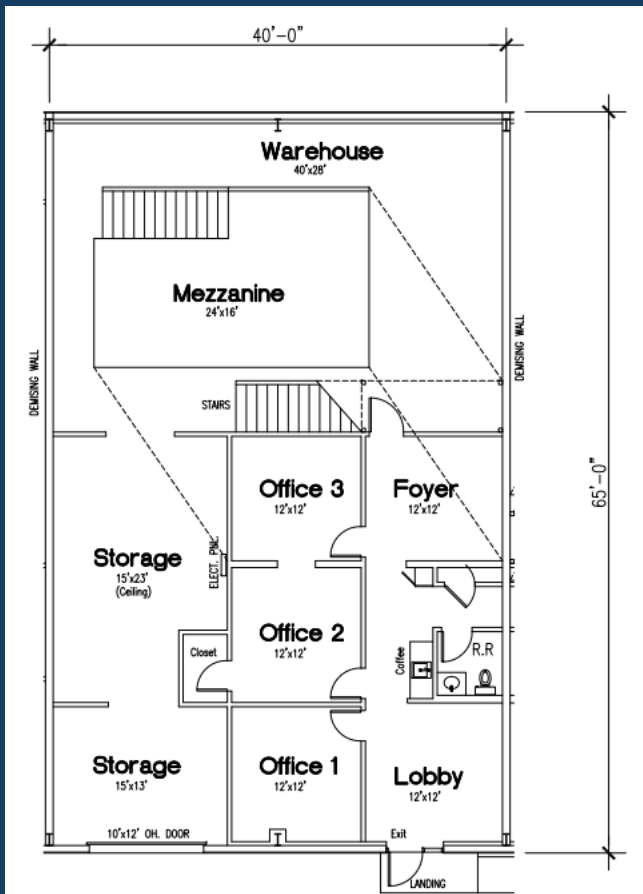
Available: Two 2,600 SF units; individually or contiguous; move-in ready

1,700 SF warehouse; 900 SF office

Grade level doors, ample parking

3 Phase Power

A/C in Office & Warehouse



Doug Goff



(281) 678-5863

doug@vistadevpartners.com

This information is deemed reliable, however, Fort makes no guarantee, warranties, or representations as to the completeness or accuracy thereof.