



# OPES COMMERCIAL REAL ESTATE



3947 BROADWAY BLVD. KCMO 64111

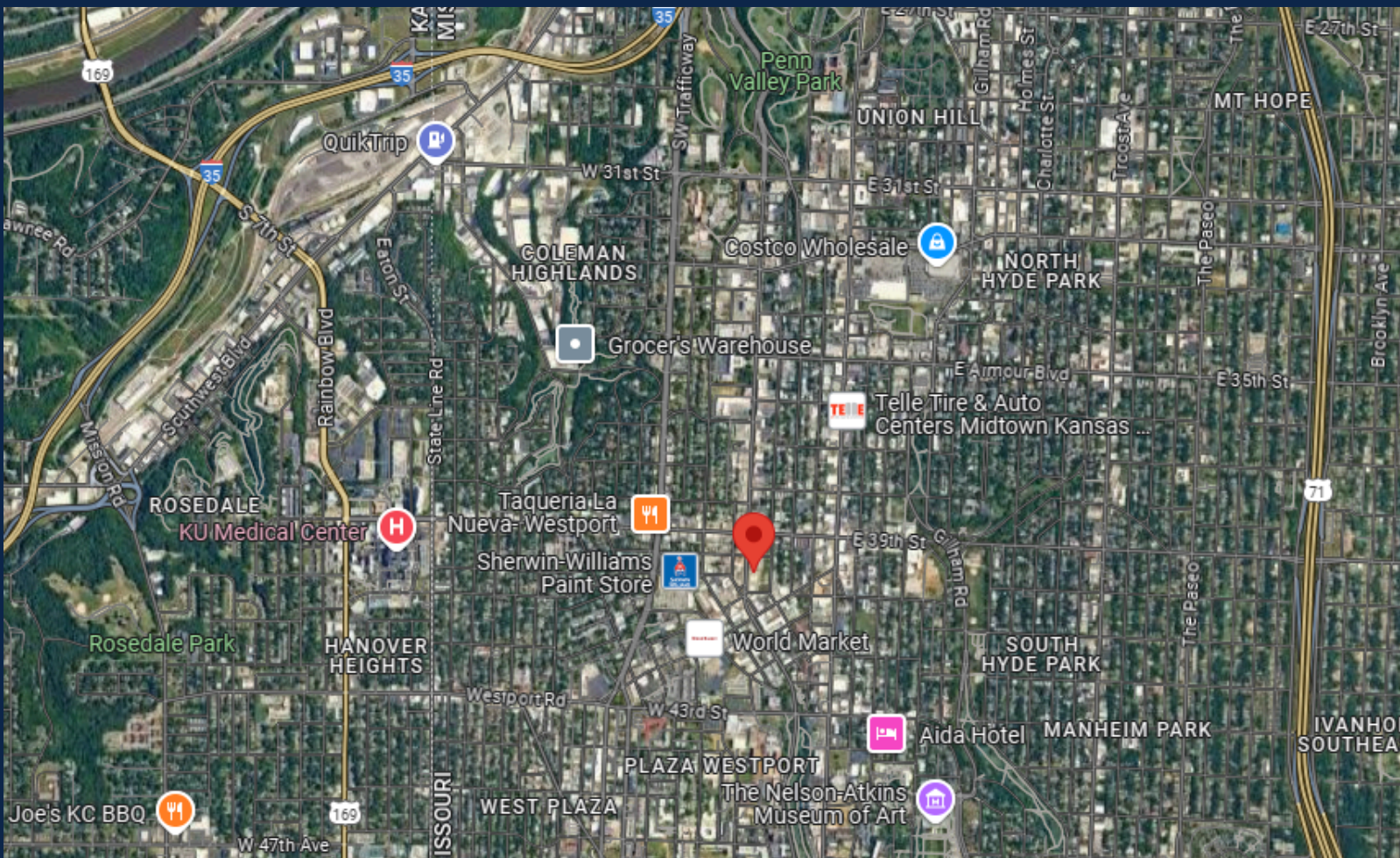
## FOR LEASE

LEASE RATE - \$15/SF NNN (\$4.76/SF)

NATHAN PRATHER | PARTNER

1-816-268-4483

[NTPRATHER@OPESCRE.COM](mailto:NTPRATHER@OPESCRE.COM)



# 3947 BROADWAY BLVD. KCMO 64111

Population	2 Mile	5 Mile	10 Mile
2024 Population	63,931	285,958	772,163
2029 Population	64,966	290,152	784,303
Annual Growth 2024-2029	10.3%	0.3%	0.3%

Households	2 Mile	5 Mile	10 Mile
2024 Total Households	33,790	127,175	329,59
Growth 2024-2029	0.3%	0.3%	0.3%
Median Household Income	\$61,973	\$57,324	\$59,942

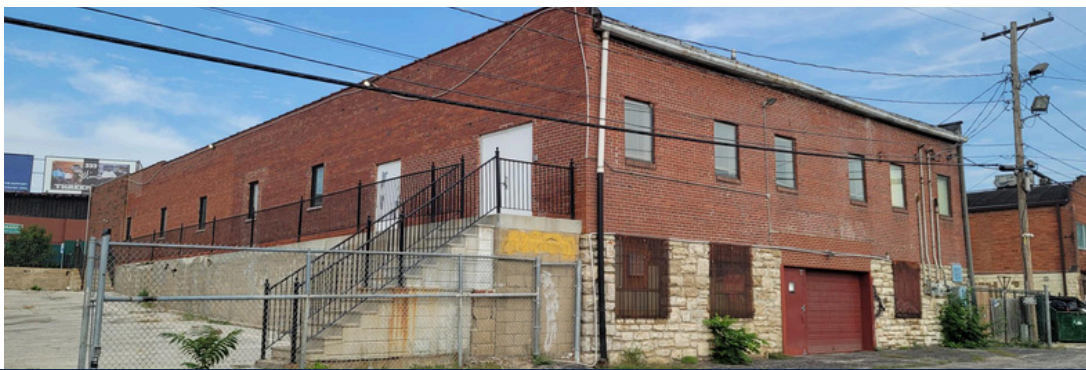
## PROPERTY FEATURES:

- EXCELLENT OFFICE/RETAIL OPPORTUNITY IN DOWNTOWN KANSAS CITY
- 7,112 +/- SF ON MAIN FLOOR
- DRIVE IN DOOR WITH A 3,808 +/- SF BASEMENT (THIS IS IN ADDITION TO THE 7,112 +/- BUILDING SF FOR NO ADDITIONAL CHARGE)
- 5 OFFICES, 3 HAVE SINKS, 3 RESTROOMS
- LARGE OPEN AREA WITH ACCESS TO SEVERAL SINKS
- GREAT LOCATION JUST OUTSIDE OF WESTPORT WITH MORE THAN 18,000 CPD ON BROADWAY
- ACCESS TO 17 PARKING SPACES, 2 HANDICAP SPACES AND ADDITIONAL OFF STREET PARKING
- ELECTRICAL: 240 SINGLE PHASE

3947 BROADWAY BLVD. KCMO 64111



OPESCRE.COM



**Nathan Prather | Partner**  
**1-816-268-4483**  
**[ntprather@opescre.com](mailto:ntprather@opescre.com)**

