

**CUSHMAN &
WAKEFIELD**

FOR LEASE

CALIFORNIA PLAZA

505

**CALIFORNIA
AVENUE**

BAKERSFIELD, CA 93309



PROPERTY HIGHLIGHTS

- Class A Office Space
- Beautifully Decorated Common Areas
- Ample Parking

AREA AMENITIES

- Centrally Located
- Close to Highway

SPACES AVAILABLE

- Suite 100: ±1,349 RSF
- Suite 101: ±1,528 RSF
- Suite 106: ±1,034 RSF
- Suite 111: ±1,637 RSF
- Suite 150: ±6,719 RSF
- Suite 205: ±2,350 RSF
- Suite 211: ±1,609 RSF
- Suite 230: ±8,597 RSF

ASKING RENT

\$1.80/RSF/MG

(Excludes Utilities/Janitorial)

Alex Balfour, SIOR

Executive Director

+1 661 304 2521

alex.balfour@cushwake.com

LIC. 01709847

5060 California Avenue

Suite 1000

Bakersfield, CA 93309

Main +1 661 327 2263

cushmanwakefield.com



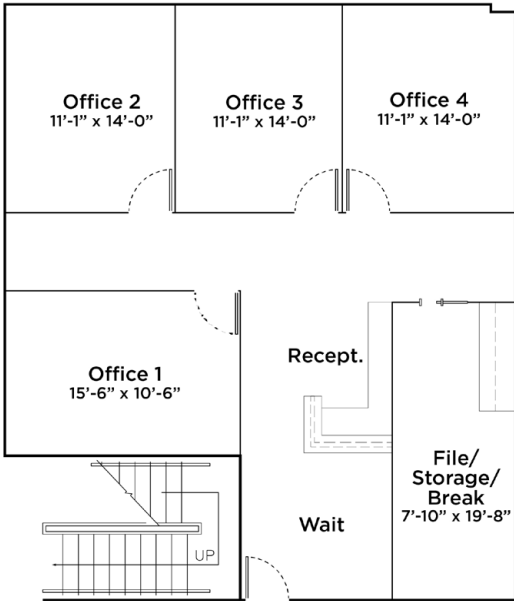
PROPERTY PHOTOS



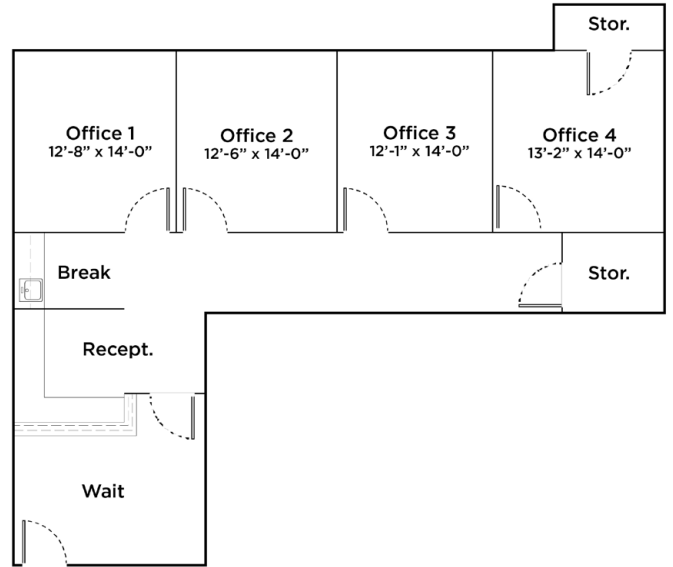
FLOOR PLAN

5001 California Avenue

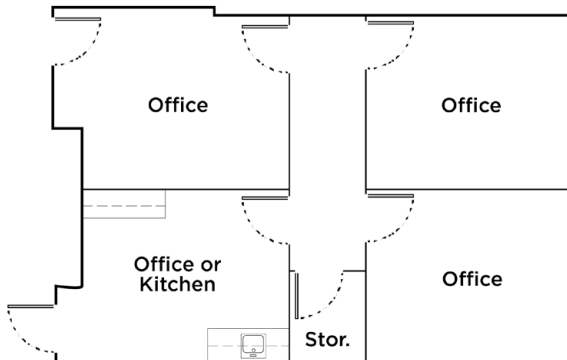
Suite 100 : ±1,349 RSF



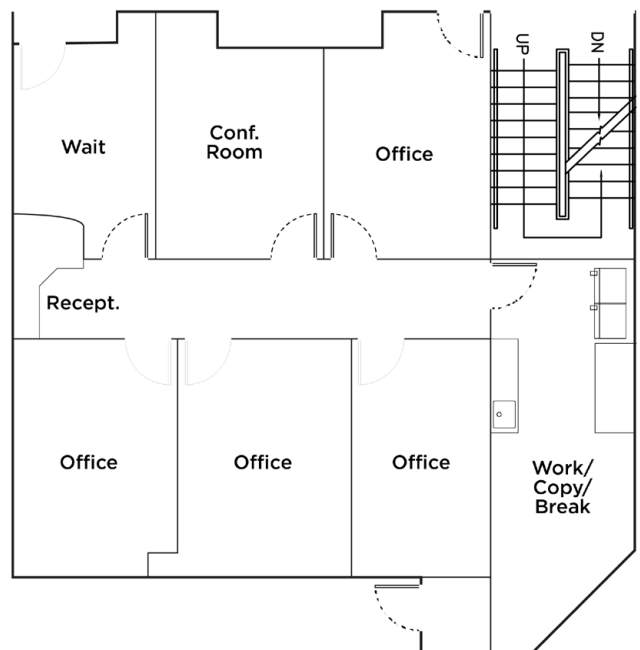
Suite 101 : ±1,528 RSF



Suite 106 : ±1,034 RSF



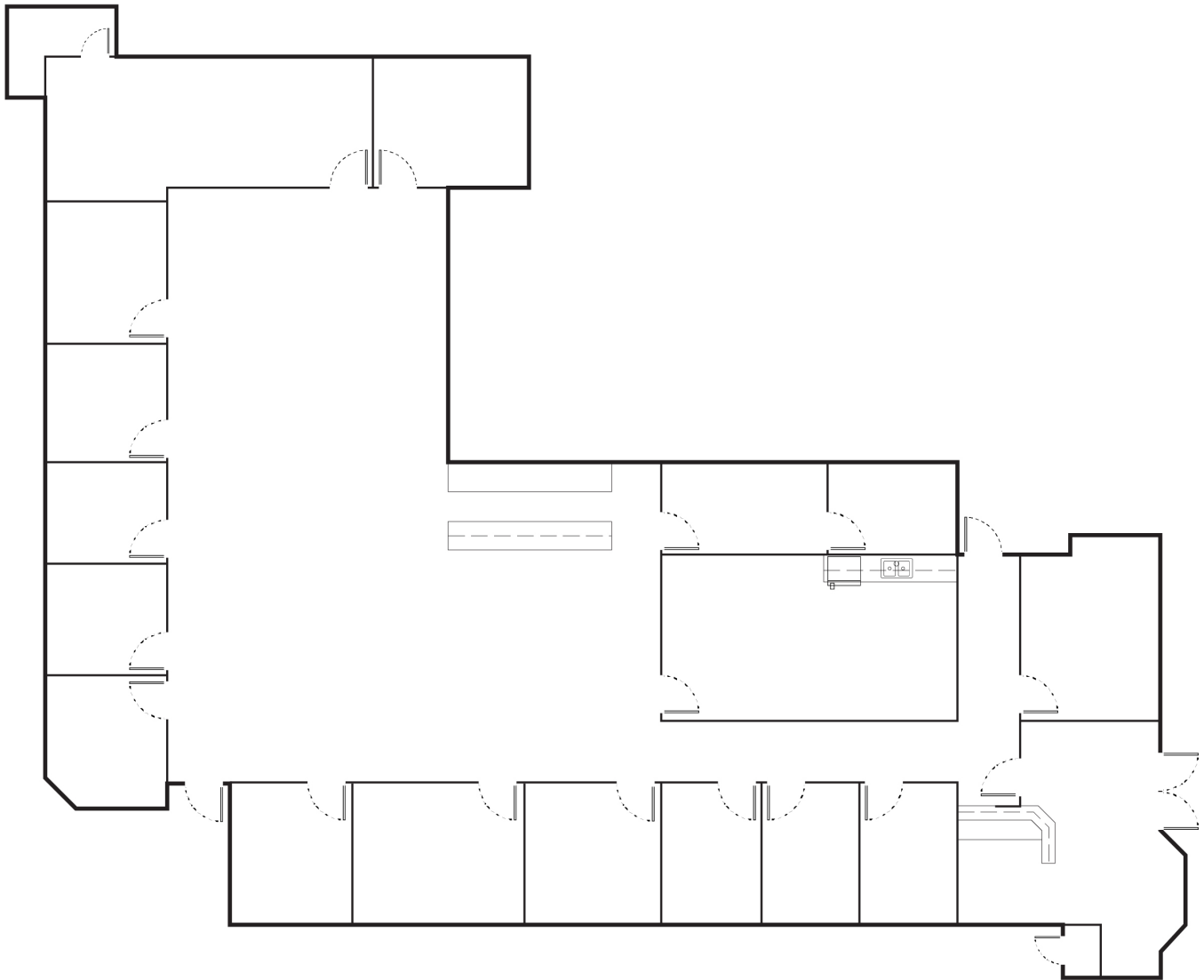
Suite 111 : ±1,637 RSF



FLOOR PLAN

5001 California Avenue

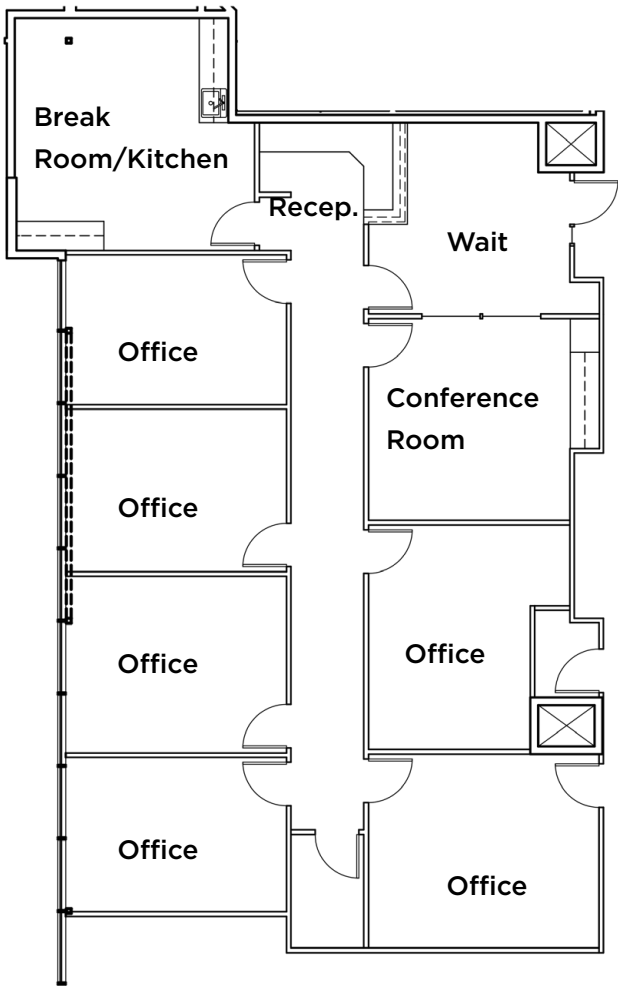
Suite 150 : ±6,719 RSF



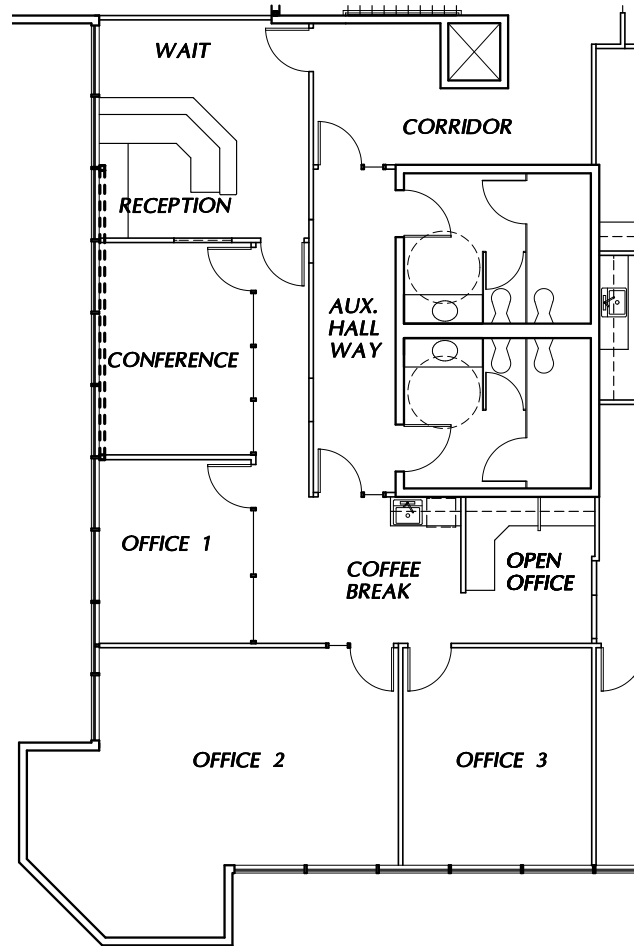
FLOOR PLAN

5001 California Avenue

Suite 205 : ±2,350 RSF



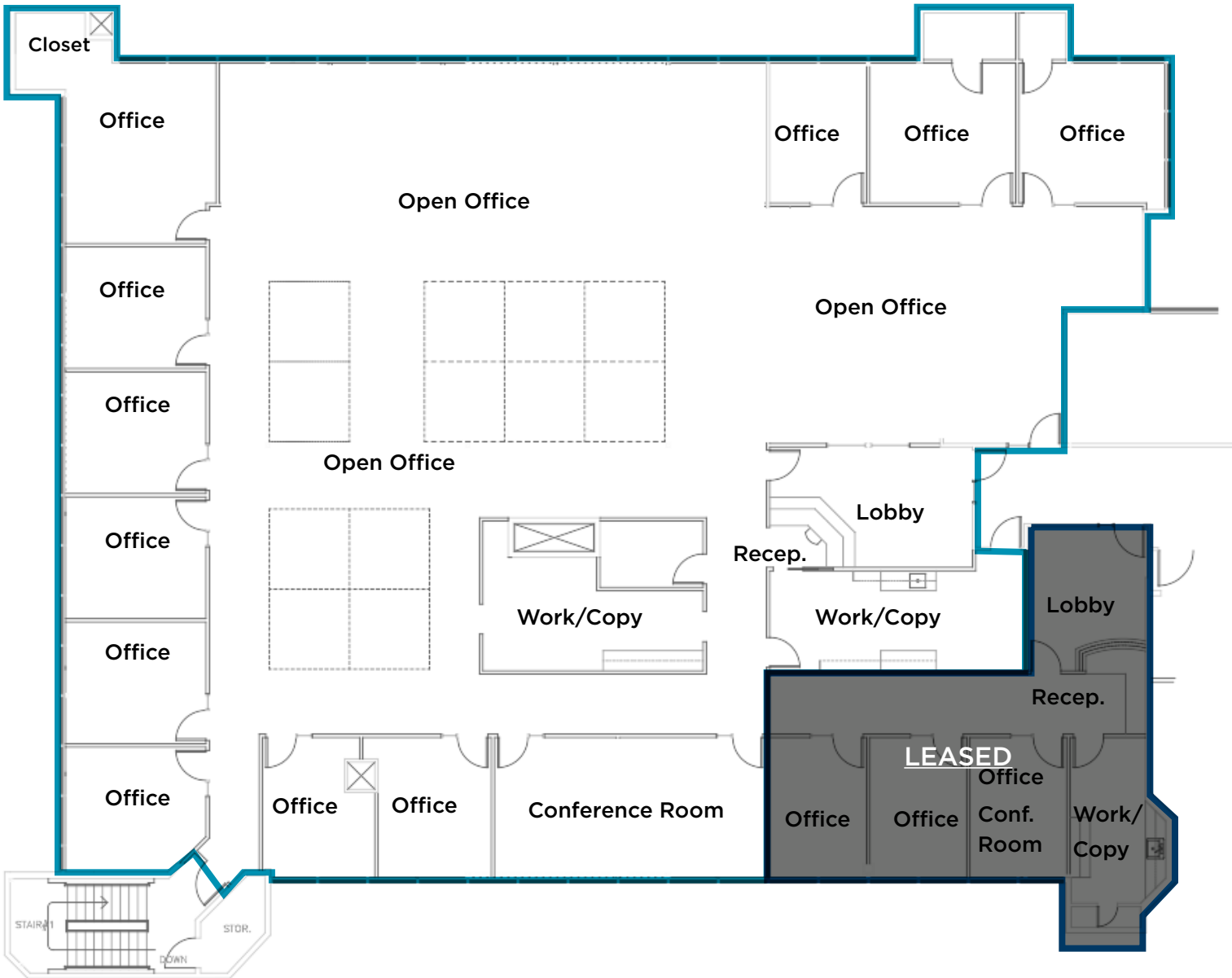
Suite 211 : ±1,609 RSF



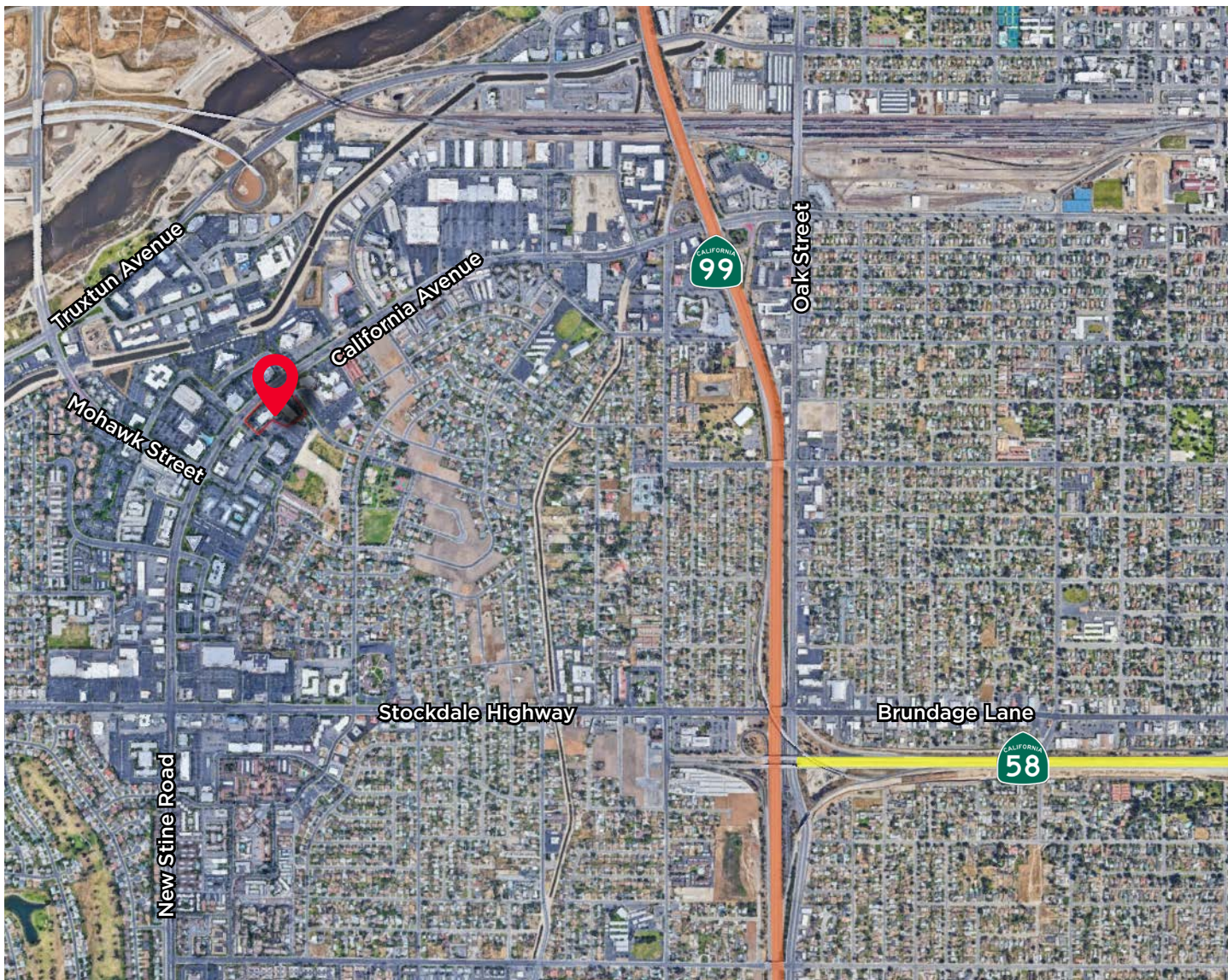
FLOOR PLAN

5001 California Avenue

Suite 230: ±8,597 RSF



THE LOCATION



Alex Balfour, SIOR
Executive Director
+1 661 304 2521
alex.balfour@cushwake.com
LIC. 01709847

5060 California Avenue
Suite 1000
Bakersfield, CA 93309
Main +1 661 327 2263
cushmanwakefield.com



Alex Balfour, SIOR

Executive Director

+1 661 304 2521

alex.balfour@cushwake.com

LIC. 01709847

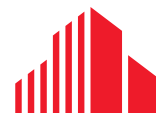
5060 California Avenue
Suite 1000

Bakersfield, CA 93309

Main +1 661 327 2263

LIC. 01880493

cushmanwakefield.com



**CUSHMAN &
WAKEFIELD**