

SPACE FOR LEASE

515-541 S Alvarado St, Los Angeles, CA 90057



850-2,500 sf

AVAILABILITY

- **Available Units:** 850 sf-2,500 sf, 2nd floor
Retail, office, medical office
- **Asking Rate:** \$2.00/sf

HIGHLIGHTS

- **Excellent Location:** Visible corner of Alvarado St & 6th Street in a retail center anchored by El Pollo Loco
- **Parking on site,** approx. 32 spaces
- **Strong Retail Area:** Busy retail and rapidly developing area with multiple mixed-use projects underway
- **Strong Demographics:** More than 1.23 Million people with an average household income of \$86,000+ within the 5-mile area
- **Easy Access:** Close proximity to Downtown Los Angeles Mid-Wilshire, easy access to all major freeways

Contact Information:

Ryan Oh
(213) 804-7548
roh@cbcwilshire.com
BRE 01082638

Alice Oh
(213) 925-6069
aoh@cbcwilshire.com
BRE 02129043

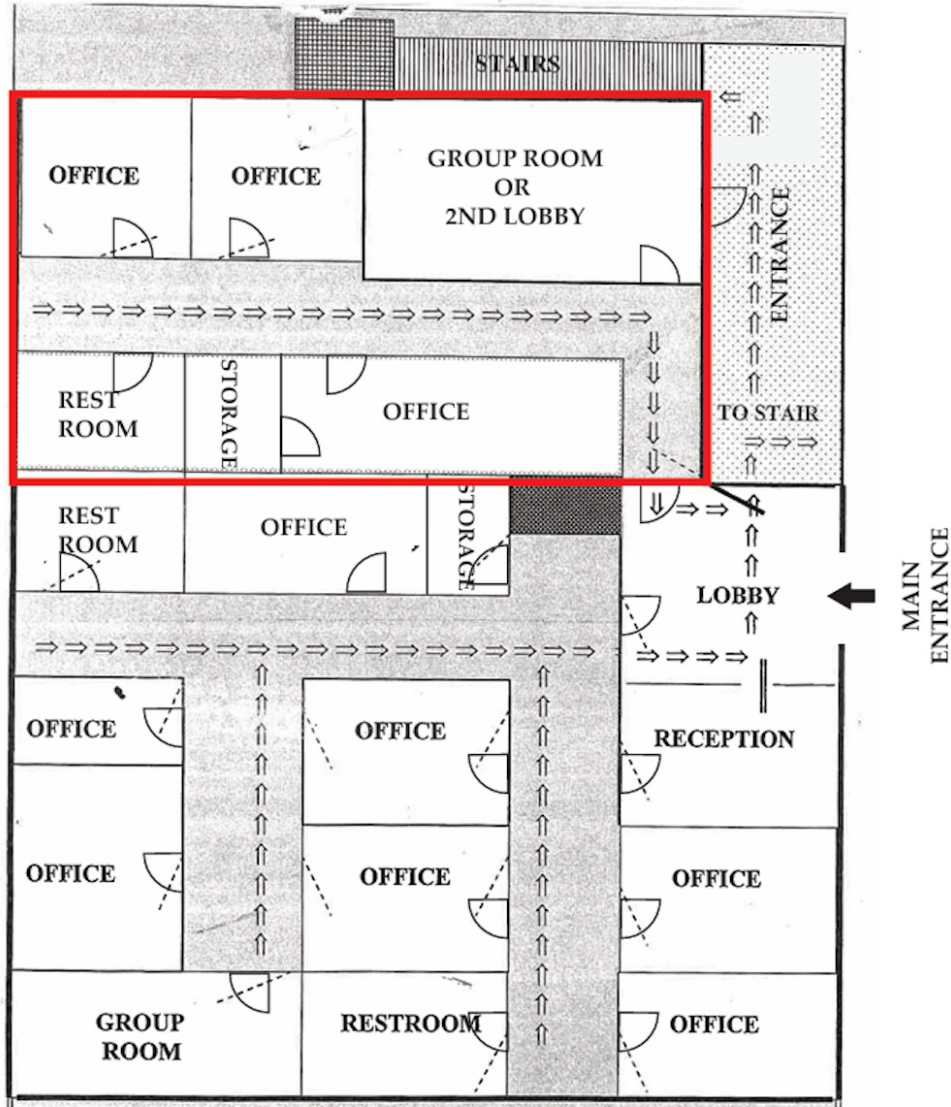
Coldwell Banker Commercial Wilshire Properties have obtained the information in this brochure from sources that they believe to be reliable. However, they have not verified its accuracy and make no guarantee, warranty or representation about it. It is submitted subject to the possibility of errors, omissions, change of price, rental or other conditions, prior sale, lease or financing, or withdrawal without notice. Coldwell Banker Commercial Wilshire Properties has included projections, opinions, assumptions or estimates for example only, and they may not represent current or future performance of the property. You and your tax and legal advisors should conduct your own investigation of the property and transaction.

3731 Wilshire Blvd Ste 820,
Los Angeles, California 90010
T. (213) 6371112 F. (213) 6371113



SPACE FOR LEASE

515-541 S Alvarado St, Los Angeles, CA 90057



850 SF

TOTAL: 2,500 SF



Coldwell Banker Commercial Wilshire Properties have obtained the information in this brochure from sources that they believe to be reliable. However, they have not verified its accuracy and make no guarantee, warranty or representation about it. It is submitted subject to the possibility of errors, omissions, change of price, rental or other conditions, prior sale, lease or financing, or withdrawal without notice. Coldwell Banker Commercial Wilshire Properties has included projections, opinions, assumptions or estimates for example only, and they may not represent current or future performance of the property. You and your tax and legal advisors should conduct your own investigation of the property and transaction.