

RIVERTON DISTRIBUTION CENTER

BUILDING B | 915 S 96TH ST | SEATTLE, WA

FOR LEASE

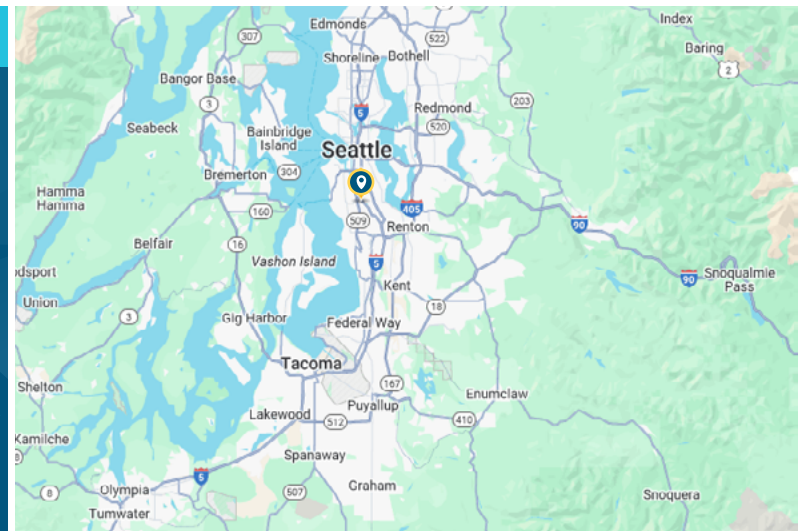
76,280 SF

RARE MODERN LAST MILE DISTRIBUTION CENTER



LEASE INFORMATION

- \pm 76,280 SF Total
- \pm 1,450 SF Office
- 30' clear height
- 14 dock-high doors (fully equipped)
- 2 grade-level doors
- 1,200A, 277/480V, 3-Phase power
- ESFR sprinkler system
- Fenced truck court



TONY KUSAK, SIOR
206.787.1465
tkusak@neilwalter.com

KERMIT JORGENSEN
206.787.1475
kjorgensen@neilwalter.com

JIM HONAN
206.787.1464
jhonan@neilwalter.com

All information references in this document are approximate. The information contained herein is contained from sources deemed reliable. It is provided without representation, warranty, or guarantee, expressed or implied as to accuracy. Prospective buyer or tenant should conduct its own independent investigation relating to the property, government codes and regulations, allowed uses, and all other matters, regardless of whether they are referred to or contained in this document.

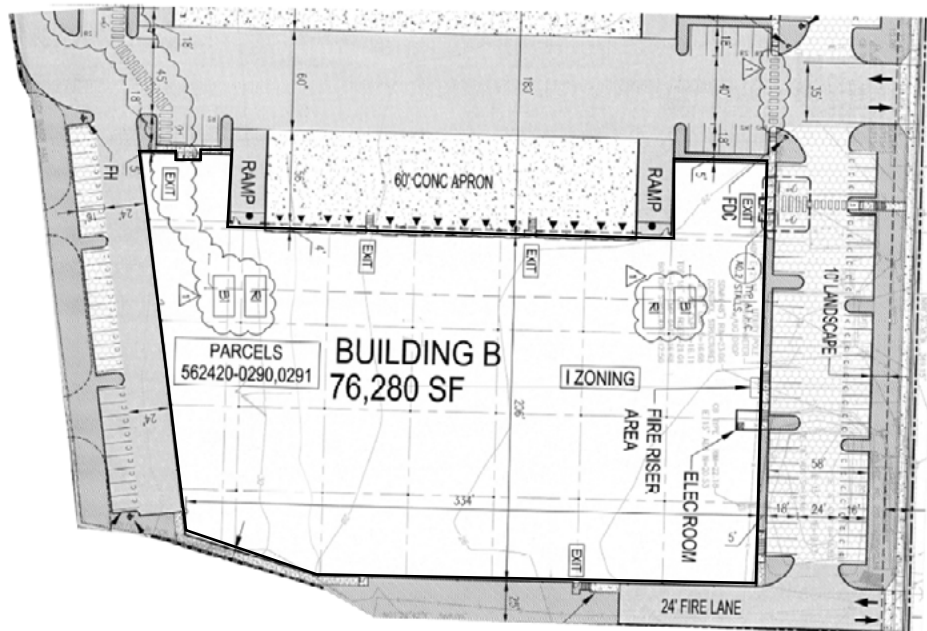
RIVERTON DISTRIBUTION CENTER

BUILDING B | 915 S 96TH ST | SEATTLE, WA



APPROXIMATE DRIVE TIMES

Highway 99:	1 min
Interstate 5:	7 min
Downtown Seattle:	20 min
Sea-Tac Int'l Airport:	10 min
NW Seaport Alliance:	12 min/Seattle
NW Seaport Alliance:	30 min/Tacoma



TONY KUSAK, SIOR
206.787.1465
tkusak@neilwalter.com

KERMIT JORGENSEN
206.787.1475
kjorgensen@neilwalter.com

JIM HONAN
206.787.1464
jhanon@neilwalter.com

550 S Michigan St
Seattle, WA 98108
206.787.1800
www.neilwalter.com