

MEDICAL  
OFFICE  
LEASE

29,690 SF

MEDICAL  
OFFICE  
SPACE



TRANSWESTERN

REAL ESTATE  
SERVICES

# Kingwood Executive Center

201 Kingwood Medical Drive | Kingwood, TX 77339

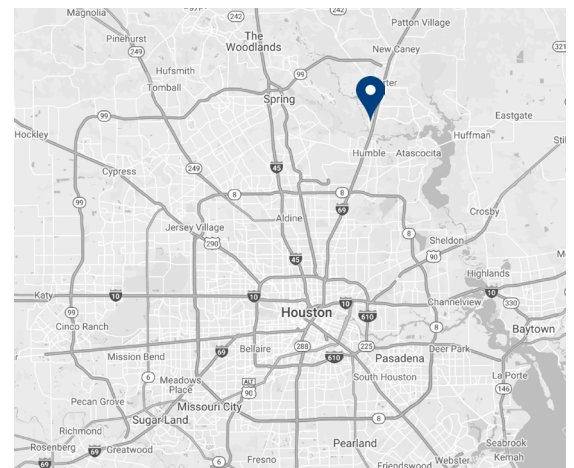


## Building Information:

- 29,690 SF Medical Office Center
- Located in Medical Center of Kingwood, TX
- Courtyard located in the center of building with ponds, sitting areas, etc.
- Located just off US 59
- Adjacent to Lone Star College - Kingwood and the Medical Center area of Kingwood
- Near Beltway 8, FM 1960, and Intercontinental Airport.

## Lease Rate:

\$22.00/NNN  
Est. 2023 OPEX \$11.97/SF +E&J



## Leasing Information:

**Christian  
Connell**

713.231.1588

Christian.Connell@transwestern.com

**Justin  
Brasell**

713.231.1595

Justin.Brasell@transwestern.com

The information provided herein was obtained from sources believed reliable; however, Transwestern makes no guarantees, warranties or representations as to the completeness of accuracy thereof. The presentation of this property is submitted subject to errors, omissions, change of price or conditions, prior to sale or lease, or withdrawal without notice. Copyright © 2023 Transwestern.

# Kingwood Executive Center

201 Kingwood Medical Drive | Kingwood, TX 77339



## The Kingwood Area

ONE MILE	THREE MILES	FIVE MILES
3,472	38,466	133,358
POPULATION	POPULATION	POPULATION
\$79,234	\$92,838	\$97,569
AVERAGE HH INCOME	AVERAGE HH INCOME	AVERAGE HH INCOME
37	38	36
AVERAGE AGE	AVERAGE AGE	AVERAGE AGE



### Leasing Information:

**Christian Connell**  
713.231.1588  
Christian.CConnell@transwestern.com

**Justin Brasell**  
713.231.1595  
Justin.Brasell@transwestern.com

The information provided herein was obtained from sources believed reliable; however, Transwestern makes no guarantees, warranties or representations as to the completeness of accuracy thereof. The presentation of this property is submitted subject to errors, omissions, change of price or conditions, prior to sale or lease, or withdrawal without notice. Copyright © 2023 Transwestern.

# Kingwood Executive Center

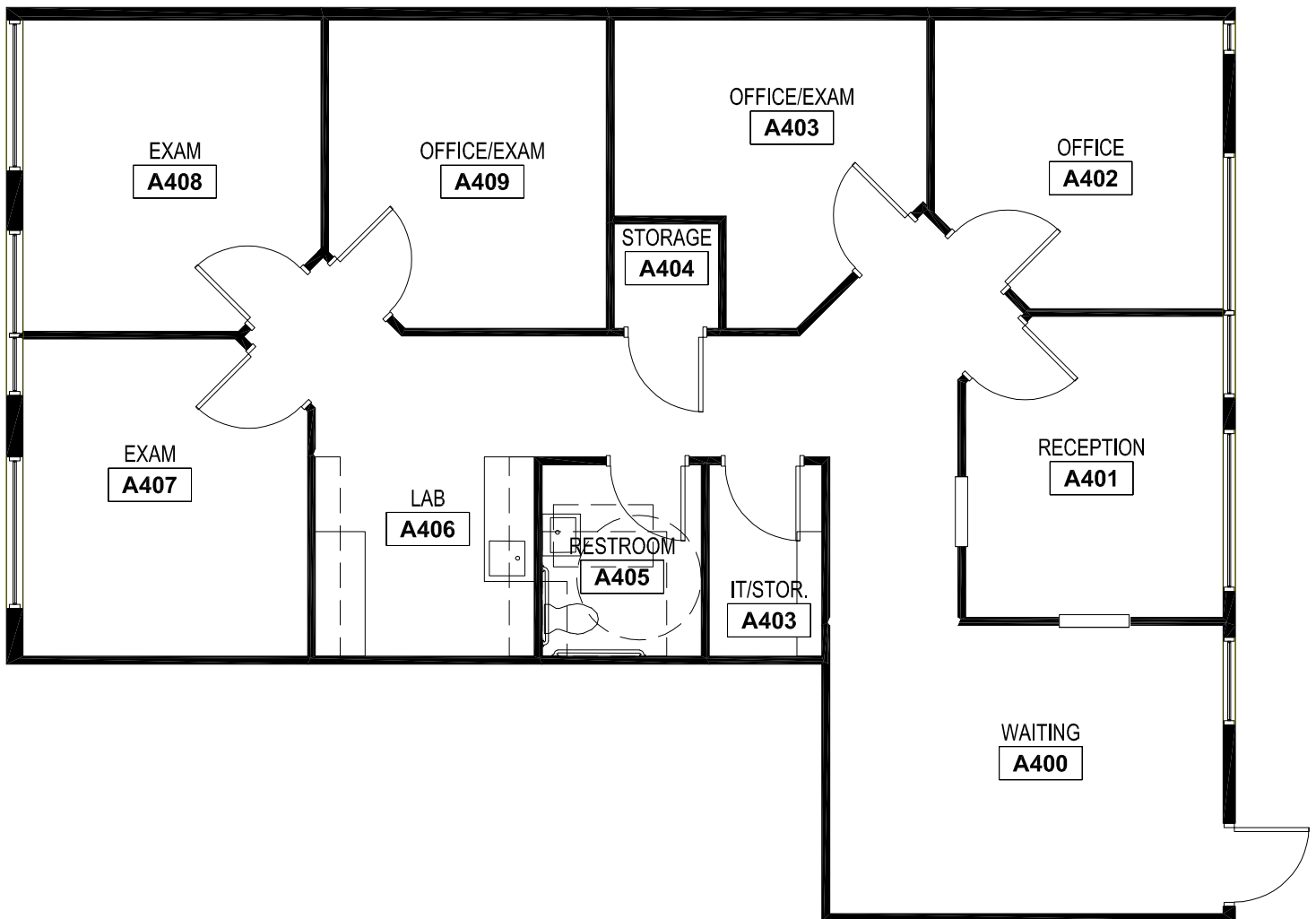
201 Kingwood Medical Drive | Kingwood, TX 77339



TRANSWESTERN

REAL ESTATE  
SERVICES

Suite A-400  
1,503 SF



## Leasing Information:

**Christian Connell**  
713.231.1588  
Christian.Connell@transwestern.com

**Justin Brasell**  
713.231.1595  
Justin.Brasell@transwestern.com

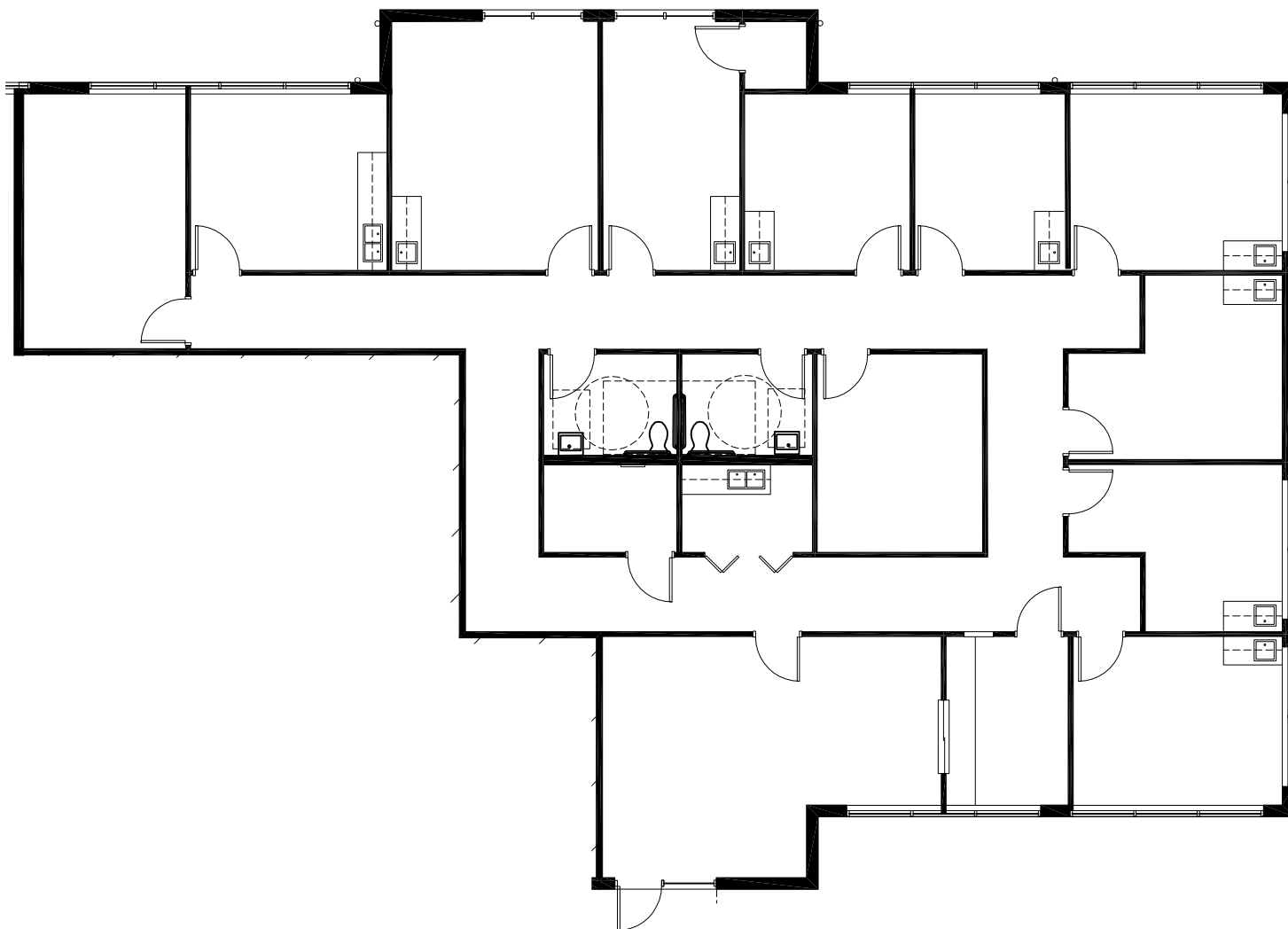
The information provided herein was obtained from sources believed reliable; however, Transwestern makes no guarantees, warranties or representations as to the completeness of accuracy thereof. The presentation of this property is submitted subject to errors, omissions, change of price or conditions, prior to sale or lease, or withdrawal without notice. Copyright © 2023 Transwestern.

# Kingwood Executive Center

201 Kingwood Medical Drive | Kingwood, TX 77339



Suite A-500  
3,507 SF



## Leasing Information:

**Christian  
Connell**  
713.231.1588  
Christian.Connell@transwestern.com

**Justin  
Brasell**  
713.231.1595  
Justin.Brasell@transwestern.com

The information provided herein was obtained from sources believed reliable; however, Transwestern makes no guarantees, warranties or representations as to the completeness of accuracy thereof. The presentation of this property is submitted subject to errors, omissions, change of price or conditions, prior to sale or lease, or withdrawal without notice. Copyright © 2023 Transwestern.

# Kingwood Executive Center

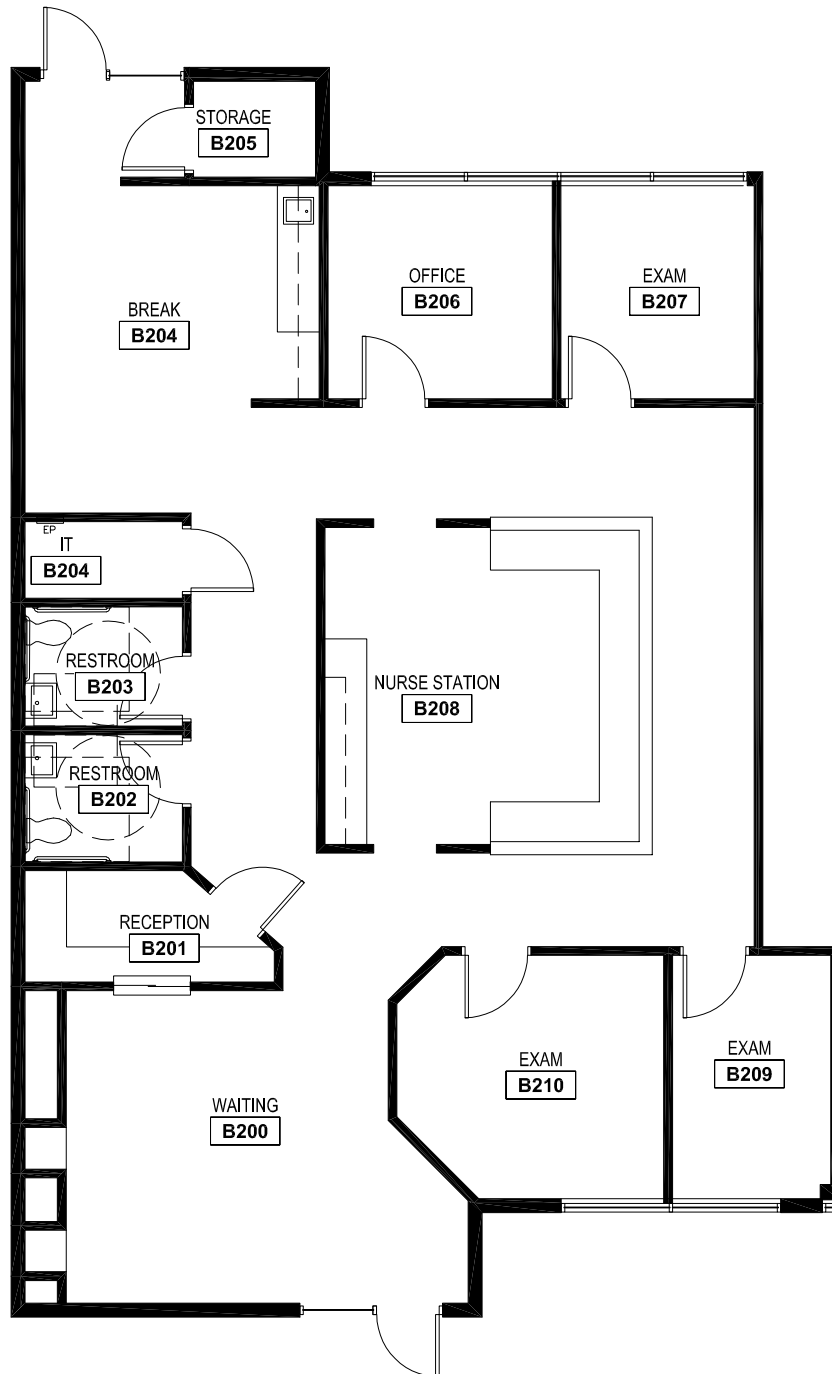
201 Kingwood Medical Drive | Kingwood, TX 77339



TRANSWESTERN

REAL ESTATE  
SERVICES

Suite B-200  
1,980 SF



## Leasing Information:

**Christian  
Connell**

713.231.1588

Christian.Connell@transwestern.com

**Justin  
Brasell**

713.231.1595

Justin.Brasell@transwestern.com

The information provided herein was obtained from sources believed reliable; however, Transwestern makes no guarantees, warranties or representations as to the completeness of accuracy thereof. The presentation of this property is submitted subject to errors, omissions, change of price or conditions, prior to sale or lease, or withdrawal without notice. Copyright © 2023 Transwestern.