



FOR LEASE

5,400 -6,750 SF Heavy Power Dock Loading

211 Wyandot Street | Denver, CO 80223

RATED REDUCED!



**Open Warehouse, Dock Loading,
Heavy Power, 40 Tons Of HVAC**

CONTACT:

GREG KNOTT

EXECUTIVE VICE PRESIDENT

303.521.3648

gknott@uniqueprop.com

EARL DUFFY

SENIOR BROKER ASSOCIATE

303.968.4929

eduffy@uniqueprop.com

UNIQUE PROPERTIES

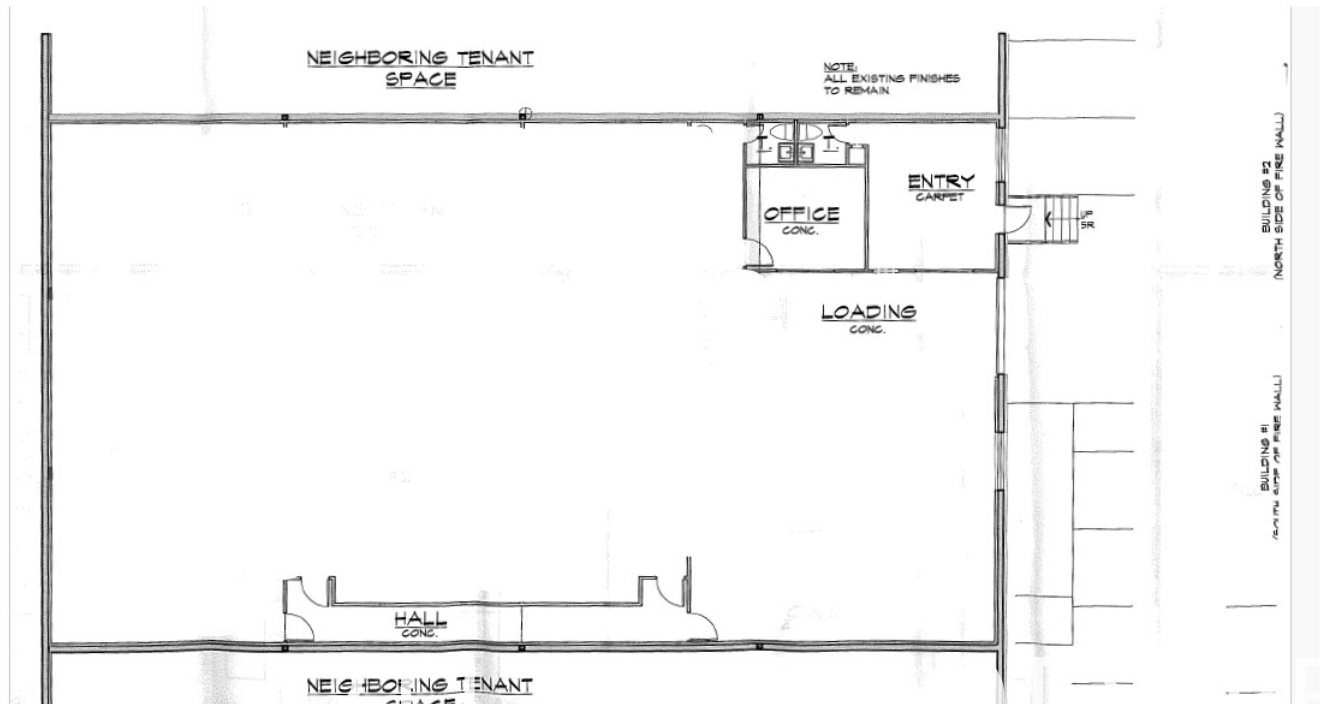
400 S. BROADWAY

DENVER, CO 80209

(p) 303.321.5888

(f) 303.321.5889

WWW.UNIQUEPROP.COM

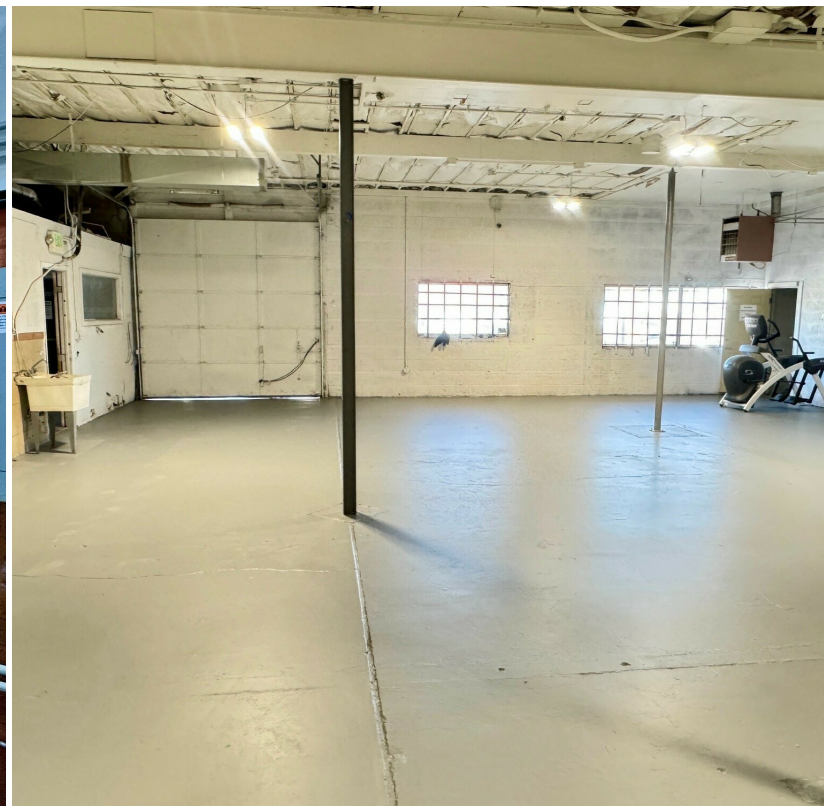


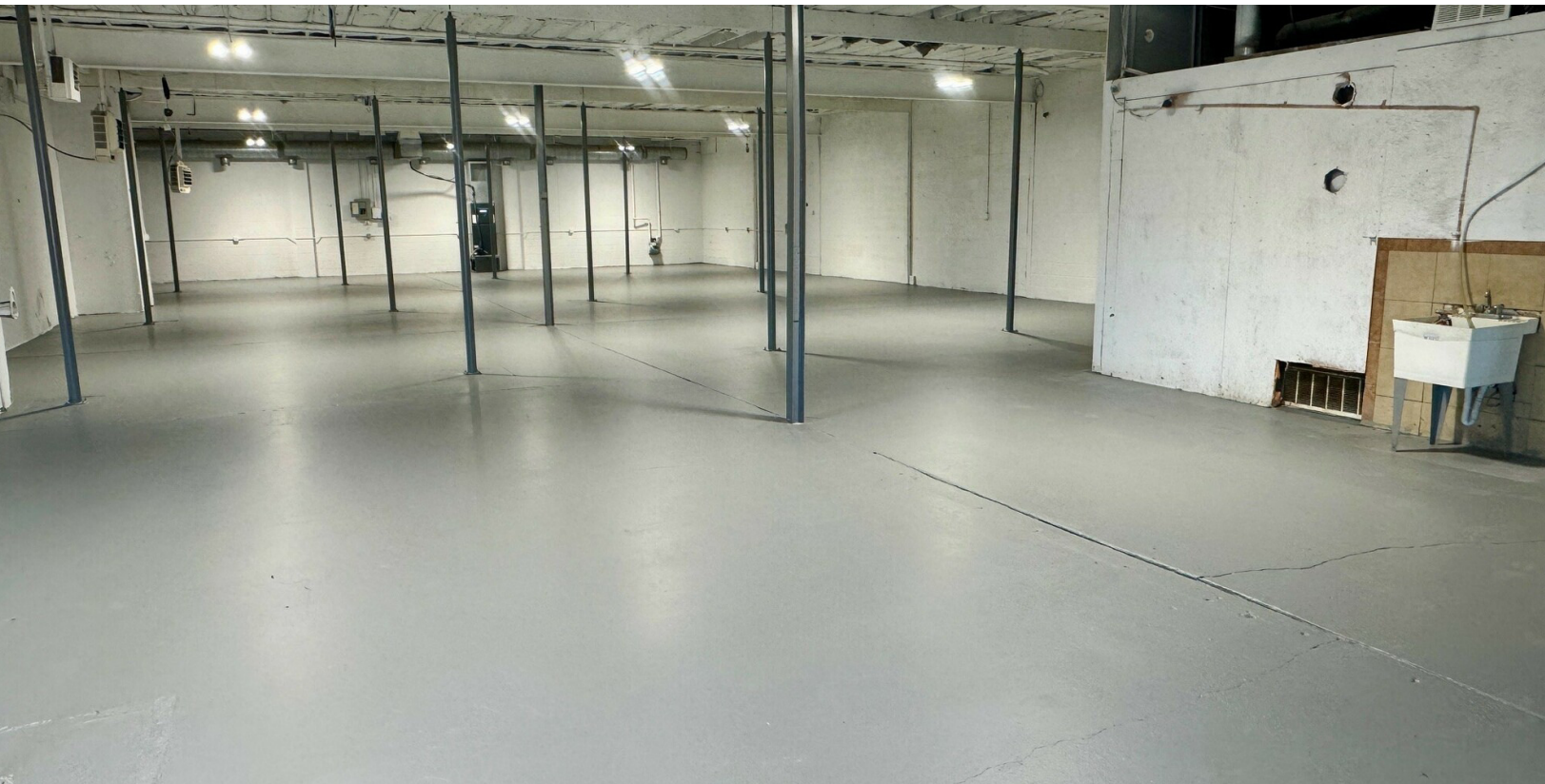
OFFERING SUMMARY

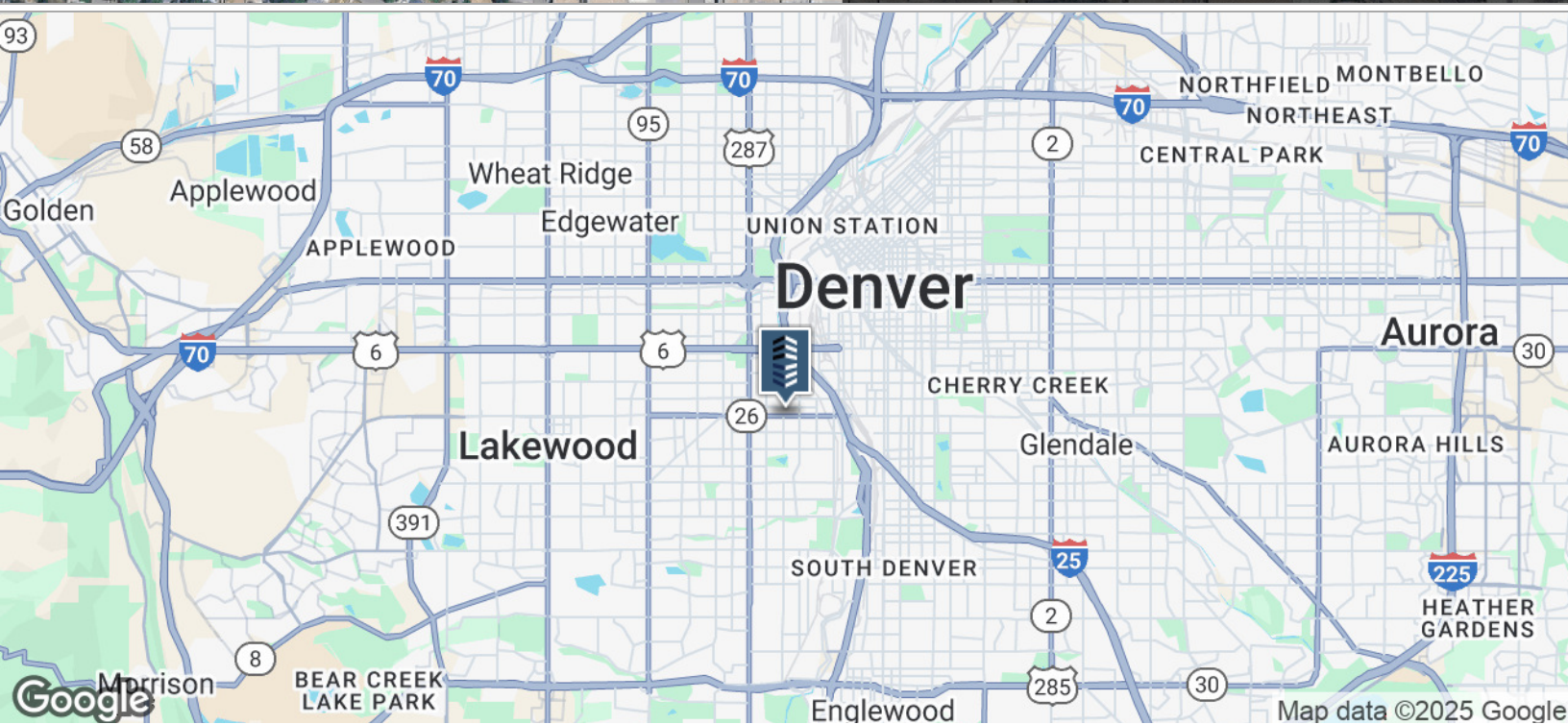
Available SF:	5,400 -6,750 SF
Office:	600 SF
Lease Rate:	\$6.00/SF NNN \$7.50 SF/NNN
2024 Est. NNN:	\$4.82/SF
Loading:	1 Dock High Door
Ceiling Height:	12'
Power:	600a 3 Phase (TBV)
HVAC:	40 Tons (former grow)
Zoning:	I-A
City/County:	Denver/Denver

PROPERTY HIGHLIGHTS

- Recently Renovated, Fresh Paint, Open Warehouse
- Heavy Power Ideal for Printers, Machine Shop, Fabrication
- Dock high Loading
- Minimal Office
- Entirely Temp Controlled
- Well Located at 6th & I-25
- ADA Compliant
- Best Rate in Central Denver







CONTACT:

GREG KNOTT

EXECUTIVE VICE PRESIDENT

303.521.3648

gknott@uniqueprop.com

EARL DUFFY

SENIOR BROKER ASSOCIATE

303.968.4929

eduffy@uniqueprop.com

The information contained herein was obtained from sources believed reliable; however, Unique Properties makes no guarantees, warranties or representations as to the completeness or accuracy thereof. The presentation on this property is submitted subject to errors, omission, changes of price, or conditions, prior to sale or lease, or withdrawal without notice.